

L. A. Kibbe

1937

Klipsun

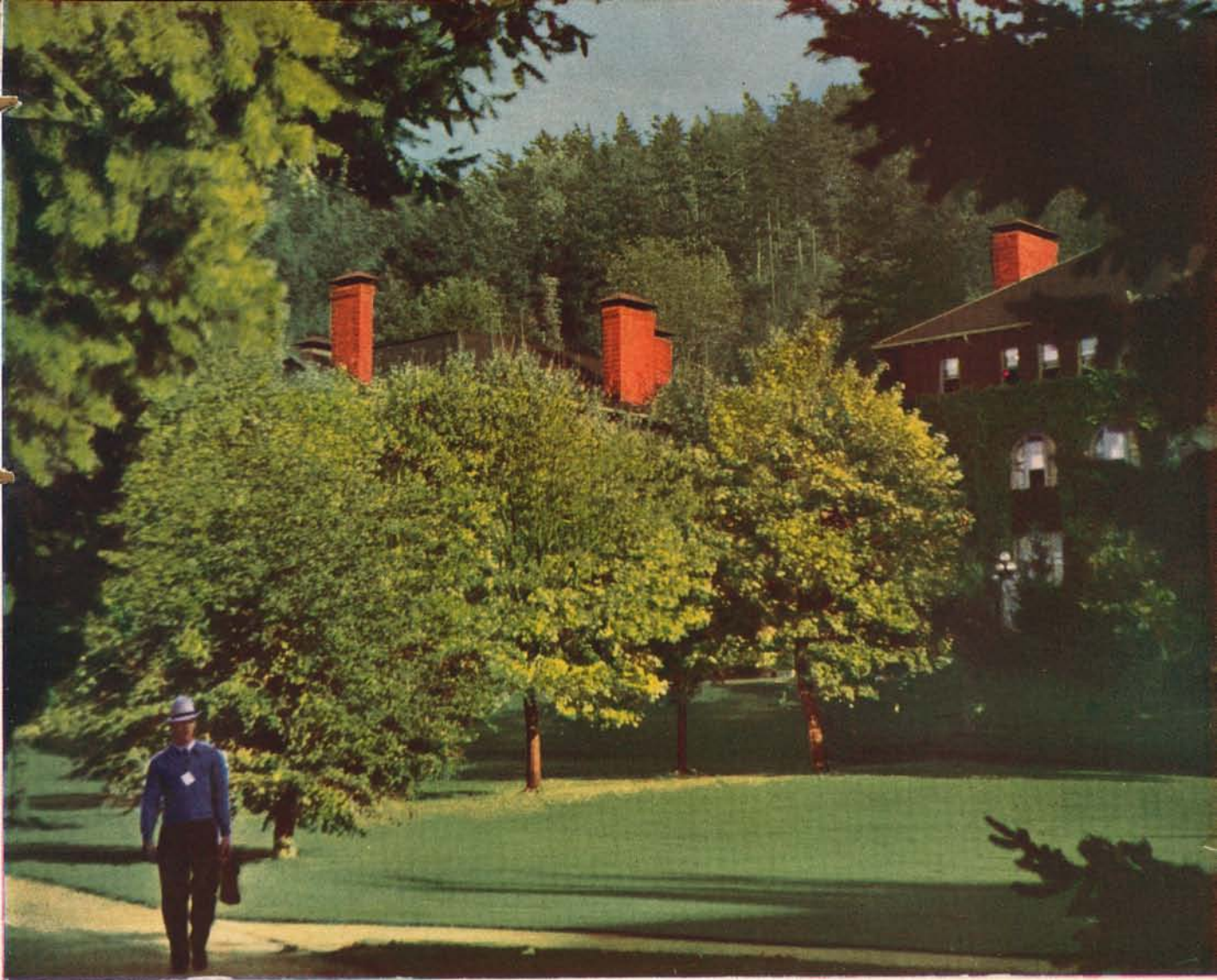
Copyright 1937 by

MARGARET THON, Editor

HELEN HOSTETTER, Manager

L. A. Kibbe





1937

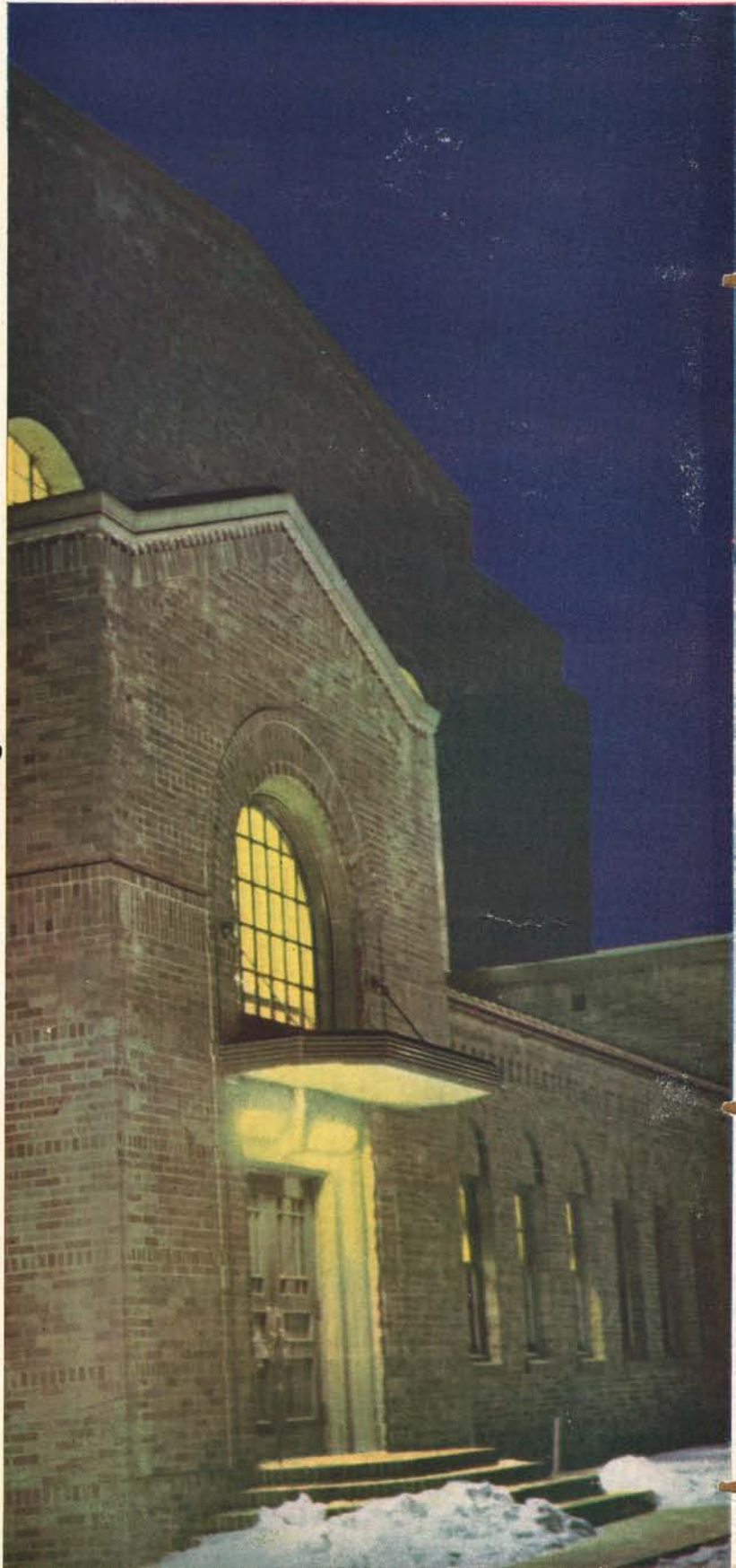
Klipsun

Published by the ASSOCIATED STUDENTS, AT WESTERN WASHINGTON COLLEGE OF EDUCATION, BELLINGHAM, WASHINGTON

DEDICATION



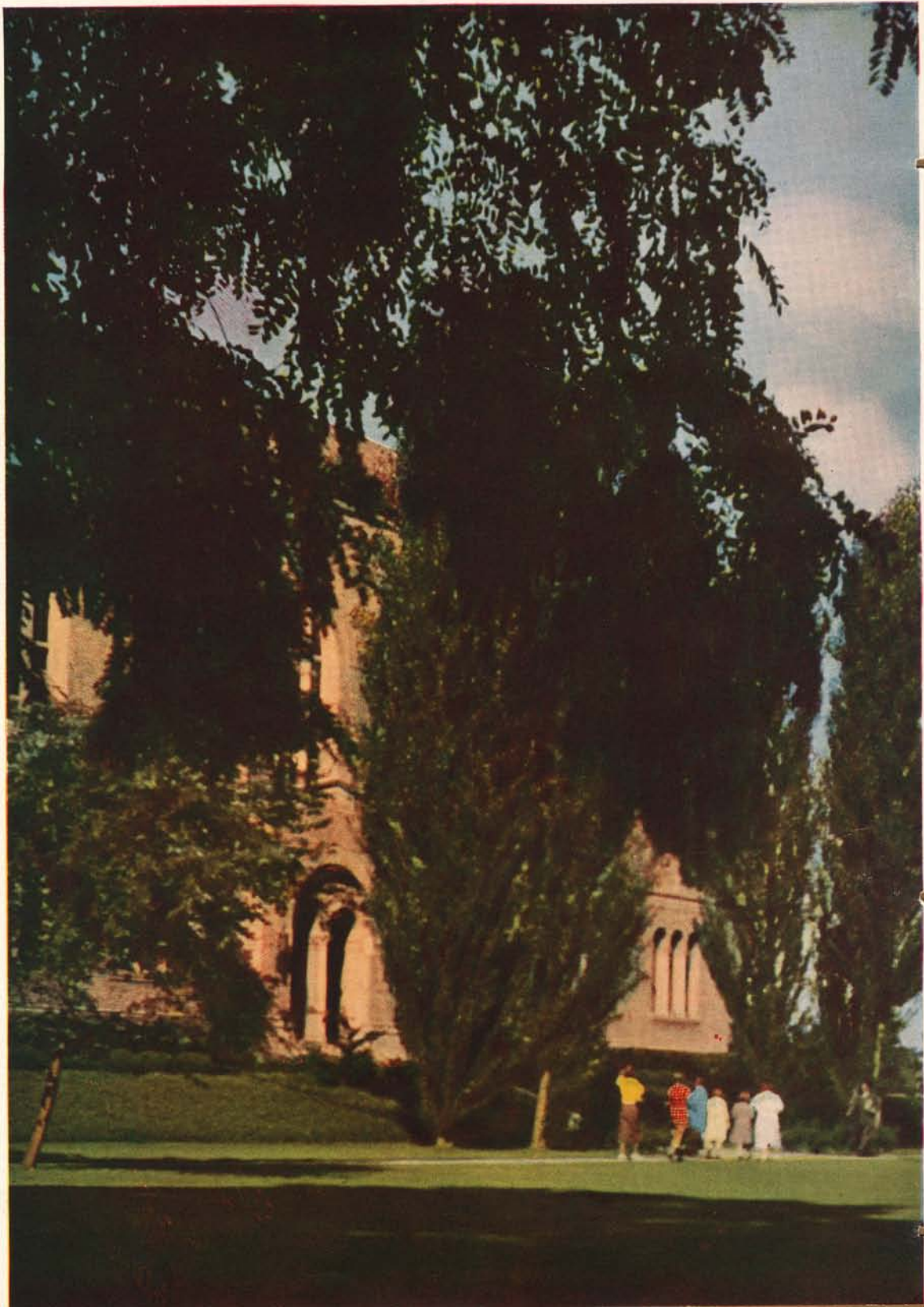
To the Physical
Education Building
erected to the
ideal of good
health, and to
the man through



whose efforts this
building was realized,
the 1937 Klipsun
is dedicated.

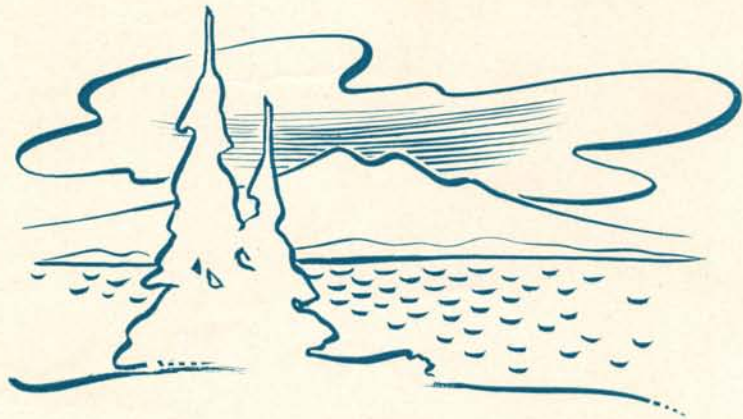


• The constant increase in enrollment and improvement in educational facilities brought about by the building program of President C. H. Fisher are fitting tribute to WWC's fourteen-year president, to whom this volume is dedicated.



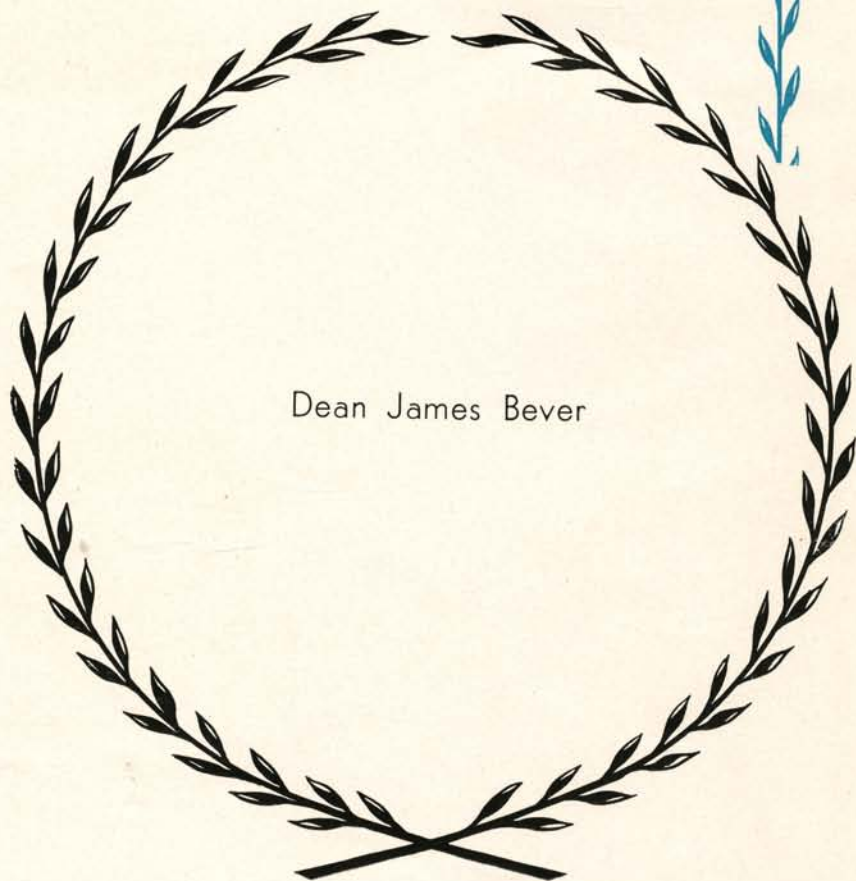
Foreword

• *To record a lasting and comprehensive summary of this school year . . . to provide a candid cross-cut of student life . . . personalities . . . events that have made 1936-37 outstanding in the history of W. W. C. . . . these have been the aims in the planning and preparation of the 1937 Klipsun.*



In Memoriam

Dean James Bever





CONTENTS

<i>Page</i>	(10)	Activities
	(26)	Administration
	(38)	Classes
	(58)	Athletics
	(76)	Organizations





Activities



POPULAR



● LUND

○ TOMCO

● Florence Lund, better known as "Tory," first woman in ten years to be elected president of Associated Students . . . Voted most representative woman on the Campus . . . Her ready wit and leadership ability have earned her this place of honor.

● Ed Tomco, chosen by students as this year's most representative man . . . W. Club president, football captain, member of the Board . . . Everybody knows him and everybody likes him.

- No man in school was able to equal Alfred Brandt's scholastic record . . . His high grade point average distinguishes him as the "smartest" man in the junior class.
- Because there was only five thousandths difference in the grade point average of the two women highest in scholarship, we honor them both . . . Loreen Hovan and Ethel Ross.



● BRANDT

● ROSS, HOVAN

SMART



• The age of reason • Spirits dance at the Hal-
 lowe'en informal • This Edens hall team might
 have beaten Cheney • Why, Elsabelle, don't
 they serve breakfast in bed at the Dorm? • Mar-
 ion blows her man down • The first nighters,
 Don and Betty • Thirty cents an hour cleans
 the sidewalks • He said he was waiting for a
 street car, but street cars don't run in Olympia
 • The minute man, Doc Bond, holds the clock
 • "Hist. 1, Lit. 1, Math. 1, and College Problems"
 • "Alma Mater, Hail, All Hail to You" • "Keep
 off the Grass" Dack, shovels.

• The beanery boys look at the birdie • Hank and Frances at the Valentine Ball • Shove it a little more to the left, Holder • This Angel did not fear to tread • Bachelor Robocker prepares to feed the inner man • Kidder and Phair take a trimming • Ye Auld Servuwell hanger-outers • Maxine and Maynard with his heart on the right side • John Barrymore Soukup shows his profile • We three • When you and I were young, Maggie • A sit down strike at Viking Manor.





• Try, try again • Arne and Don, hat check boys • Lucy and Eleanor, domesticated ladies
 • The trampling herd • Ah, sweet mystery, at last we've found thee • "Fourth down and ten yards to go" • In the spring, tra-la • Something's wrong here • Hub a little tipsy • Yust come over — and see me some time • Virginia and Joe marooned • The ol' swimmin' hole goes modern • Track!

- "A loaf of bread, a jug of wine," and Chris
- Taken on Sehome • Kluj, Viking weakened weekender • "How about my milkshake?" • Cute!
- Dot havin' trouble • Last summer's Friday Harbor tripsters • Two Monday morning tomato juice boys • The rest of the "Much-Ado-ers" • Love and a dime • Nesting season • Jeep!





• "And in his nighty-panties too" • Snapshot editor plays cupid • Kenny Johnson in silhouette • Perky • Tory tanks she take Holm now • Shake on it • Les and a bridge • "Aw, gwan!" • Esther sans Echo • Echo sans Esther • The shadow stalks • "All I am I owe to my buttermilk," quoth Bob McConnell.

• Chuckanut • Trottin' with the Valkyries •
What a shocking business! • "And do you
know!" • Queen for a nite • Get to class, boys
• "Measuring Porter for his tombstone?" • Ah-
ha, so this is the way it's done, Miki • Dorm
damsels • Just four of us • He-man Richards





• Edwards hall clock takes second prize • Cheney's most distinguished rooter—Governor Martin • Every eye is on the ball • Freshmen burn their own bonfire • You tell' em, Prexy • "Sitting Bull Anderson died with his boots on" • Assembly performers • Harborview takes first • Chairman Marion Haydon puts over thirteenth annual Homecoming.

HOMECOMING

CAMPUS DAY

• Chairman Bud Niel turned in a good job even if the weather man did go back on us • Don't cry, there'll be another car • Careful there, Virginia • Frannie and Eleanor "let themselves go" • "I want to talk a few minutes" • "I christen thee Lakewood • Stroke! • Hey, how about an oar! • When do we eat! • Skinner on the headlight • Kiddyap Napoleon, it looks like rain.



MUSIC

GLEE CLUB




- Holmes, Weino, Denny, Blandau, Hall, Allbough, Fowler, Colebank
- Peterson, Knibbs, Dunfee, Anderson, Toler, Cunningham, Richards, Thon
- Pickett, N. Weeks, Kurtz, J. Weeks, Haugland, Tucker

BAND

- Toms, Bloom, Sumatabat, Witherow
- Bushell, Lyle, Bellman, Magneson, Greseth, Schaeffer
- Funk, A. Jackson, Hewitt, Eckert, Colling, Nelson
- Allen, Keyes, Moore, Brooks, Jackson, Mullen, Tucker

ORCHESTRA

- Pierson, Brockway, Spees, Collett, Anderson, Dunfee, Armstrong, McConnell, Schaeffer, Hatfield, Williams, Moldrem, Williams, Magneson, Tustin, Lustermann, Bellman, Krieter, Echart, Mrs. Bushell, Mr. Bushell, Almstead, Colling, Wesler, James, Witherow, Funk, Barnard, Allen, Black, Bloom, Ellenbaas, Parker, Kennedy, Davis



● The orchestra, grown to forty members, has shown development in quality of music performed . . . Played MacDowell concerto featuring Dr. A. C. Hicks . . . Played at PE building reception, auto show, assembly concert, and Campus school festival . . . Performed at Commencement . . . Climaxed the season at Miss Edith Strange's evening of concerto music . . . String ensembles played for autumn play, and furnished seventeenth and eighteenth century music for Shakespearean production . . . The band added color at all sports events . . . Women's glee club sang for spring assembly.

DRAMA

● HOPPE



● "LATE CHRISTOPHER BEAN"

Cast: Nelson, White, Hawley, Bacon, Black, Cruttenden, Ponco, Boal, Soukup.



● "MUCH ADO ABOUT NOTHING"

Cast: Strain, Greseth, Potter, Rolle, Toms, Zylstra, Krieter, Hatch, Wilson, Acklen, Warner, Soukup, Dunfee, Hawley.



● With a good play and enthusiastic players, the Division of Drama, directed by Victor H. Hoppe, opened the fall season with "The Late Christopher Bean" . . . This play demonstrated the effectiveness of the penthouse style of production . . . "Much Ado About Nothing," one of Shakespeare's cleverest comedies, was the winter presentation . . . Played two nights at the school auditorium . . . Three guest performances at the Bellingham Theater Guild playhouse . . . Miss Ruth Weythman directed the dances in "Much Ado" . . . Don Bushell's string ensemble gave incidental music for both plays.

● Every Thursday afternoon tea is served in the Women's League room to all women students and faculty . . . Sponsored this year by clubs and organizations . . . Phyllis Robinson was the efficient manager of afternoon teas and fashion teas given fall and spring quarters.

● The Wednesday evening Faculty Chats, started a year ago, have continued to offer students and teachers an opportunity to debate a variety of subjects informally . . . Each week one member of the faculty leads the discussion group.



TEAS

● Maxine Moldren, Marion Denny and Miss Virginia Bever drop in for Thursday afternoon tea.



● Maybe they're talking about bugs and things . . . at any rate it seems amusing . . . Miss Leona Sundquist leads the Chat.

FACULTY CHATS

- Student assembly . . . President Fisher on the platform.

ASSEMBLIES



- Speakers, musicians and dancers, both local performers and performers on tour, entertained the student body twice weekly with a variety of programs . . . Women's League and other organizations sponsoring programs, furnished opportunity for student participation.
- Even student teachers forget problem children long enough to attend informals . . . This year at least two held each quarter . . . Sponsors were Women's League, W. Club, Men's Club and Edens Hall.

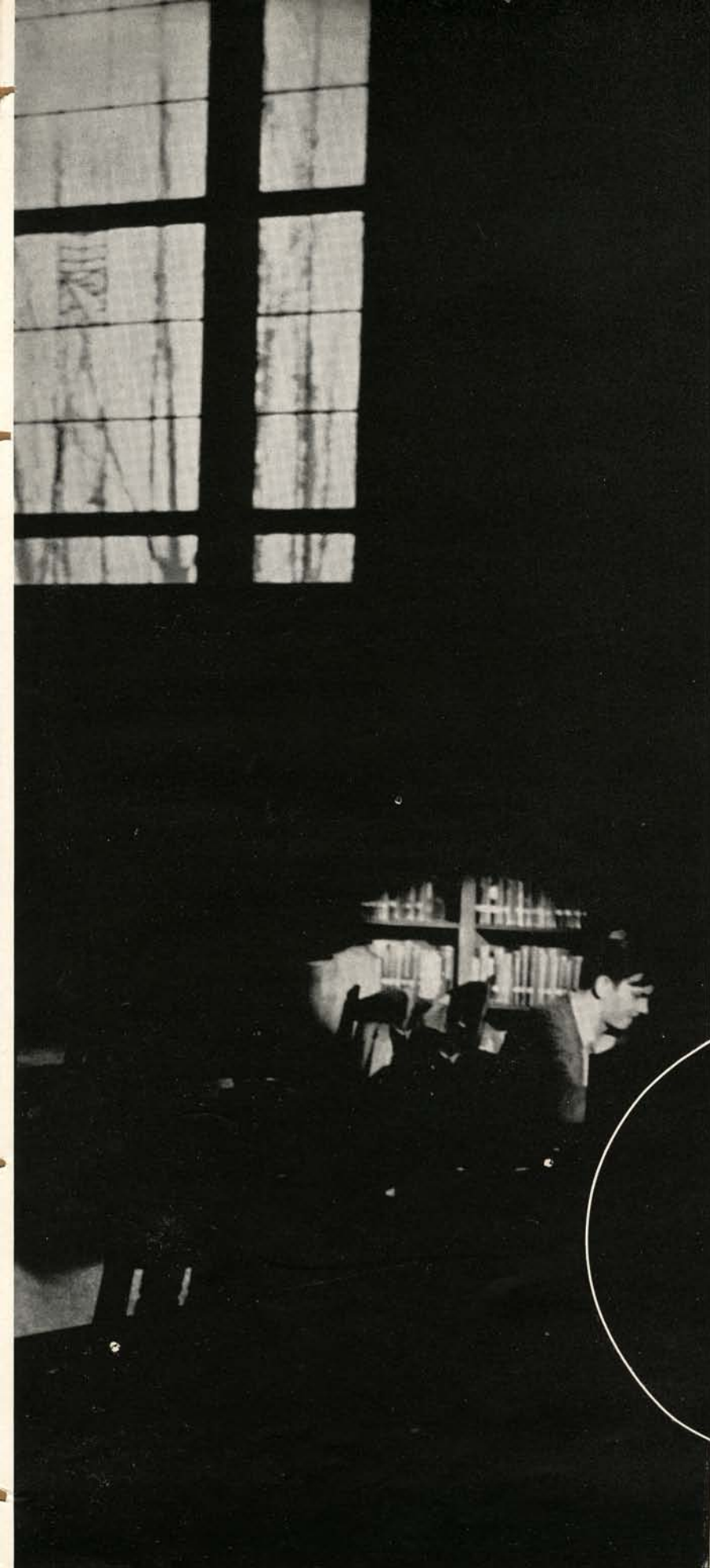


- Crystal Ball Room . . . Women's League Hallowe'en informal.

INFORMALS



Administration





● PRESIDENT FISHER

THE PRESIDENT'S MESSAGE

● 1937 is a significant year in the history of our school. The legislature gave us the authority to use the name College in place of the old name Normal school. This year for the first time we have been fully accredited without any deficiencies as a teachers' college by the American Association of Teachers' Colleges. This year we are inaugurating a new plan of certification for teachers. This plan raises the standard to four years of preparation. While students may receive a certificate at the end of three years, yet this certificate is temporary. The new physical education building, with its spacious gymnasium and beautiful swimming pool, is proving to be a boon to students and teachers. These achievements are some of the outward evidences of our desire to be a college. The real college is reflected in the intellectual atmosphere that prevails on the campus and in the exchange of ideas between students and teachers. My chief concern is that we shall increasingly become a real college.

C. H. FISHER, President.

DEANS



• MARQUIS



• JOHNSON



• CUMMINS

- Using common-sense philosophy as the basis of his judgment and good-natured humor as the balance, W. J. Marquis executes his duties as Dean of Men . . . His aid in finding employment for many students has helped them become self-supporting.
- Although officially titled Dean of Women, Miss Florence E. Johnson gladly responds to problems of any student, either man or woman . . . Keen understanding of young people and an active interest in student affairs characterize this popular counselor.
- In the summer of 1936 Miss Nora B. Cummins of the Social Science department became acting Dean of the school . . . She has filled this responsibility with an efficiency and wisdom which make her admired and respected by students and faculty alike.



● Behind the business office desk are Lyn Hughes, secretary of the student loan committee and assistant to the accountant . . . Margaret McKinnon, accountant, and Sam Buchanan, financial secretary . . . Ethel Church, secretary to the president, gives out general information and supervises the office work . . . Rosamond Barrett is secretary to the director of the Campus School . . . Student Activities and Scholarship committee work take much of the time of Allegra Jones, secretary to the dean . . . In the same office, Myrtle Burnham handles registration, freshmen credentials, and issuance of transcripts . . . As secretary to the Dean of Women, Mildred Tremain has also close contact with the women students . . . Wilma Docherty assumes the responsibilities of assistant to the Appointment Bureau . . . Charlotte Hood does the secretarial work of the Research Bureau.

● Barrett, Buchanan, Burnham, Church, Docherty, Hood, Hughes, Jones, McKinnon, Tremain.

OFFICE FORCE

LIBRARY STAFF

● Service . . . Efficiency . . . Harmony . . . These are maintained in the library by the staff headed by Miss Mabel Zoe Wilson . . . Skill in the technique of library usage is taught by Miss Wilson during winter quarter . . . Secretary to Miss Wilson, and supervisor of the reserve book room, Miss Pearl Reese directs the staff of student workers . . . Miss Miriam Snow, head of the children's library, teaches a class in child literature as well as administering her department . . . Miss Marion Lea, circulation librarian, cheerfully serves at the circulation desk . . . Making it possible for students to carry out the most difficult research, Miss Lillian George, cataloguer, keeps books, call numbers, and card catalogue in agreement.

● Through high standards of cooperation maintained by the students, many privileges are granted . . . All materials and books are made readily available . . . The library does not impose book fines.

● Wilson, Reese, Snow, Lea, George





- **ARNTZEN, EDWARD J.**
Social Science
A. B., A. M., University of Washington
Graduate Student Columbia University

- **BEVER, VIRGINIA**
Social Science
A. B., University of Washington
A. M., University of California



- **BOND, E. A.**
Mathematics
A. B., Pacific University
Ph. D., Teachers College, Columbia University

- **BOOTH, MYRA E.**
Public School Music
A. B., University of Washington
A. M., Teachers College, Columbia University



- **BOSON, NILS**
Public School Music
B. Mus. Ed., Northwestern University
New England Conservatory of Music
Columbia University

- **BREAKEY, HAZEL**
Art
B. S., Teachers College, Columbia University
School of Arts and Crafts, Berkeley, California



- **BRYANT, NELL**
Nurse
R. N., Johns Hopkins Hospital, Union Memorial Hospital, Baltimore, Maryland
Public Health Certificate, University of Washington

- **BURNET, RUTH A.**
News Writing
A. B., University of Washington



- **BUSHELL, DONALD G.**
Public School Music
A. B., A. M., University of Washington

- **CARVER, S. E.**
Physical Education
A. B., Stanford University
University of California
Western Washington College of Education

- Art . . . Sketching under the supervision of McIlvain and Breakey





• Industrial Arts . . .
Woodworking class.

- **CASANOVA, KATHERINE M.**
Campus School, First Grade
B. S., A. M., Teachers College,
Columbia University
San Jose, California State
Teachers College
- **CEDERSTROM, MOYLE F.**
English
A. B., A. M., University of
Minnesota
Ph. D., University of Washington



- **COUNTRYMAN, LINDA**
Home Economics
B. S., Milwaukee-Downer College
A. M., Teachers College, Columbia
University
- **CRAWFORD, BERTHA**
Campus School, Eighth Grade
B. S., Teachers College, Columbia
University
University of Washington
Western Washington College of
Education



- **CUMMINS, NORA B.**
Social Science
A. B., Minnesota State University
A. M., Columbia University
Graduate Student, Columbia
University
Northern Normal and Industrial
School, Aberdeen, South
Dakota
- **DAWSON, MARJORIE E.**
Primary Supervisor in City
Schools
B. S., A. M., Teachers College,
Columbia University
State Normal School, Newark,
New Jersey



- **ELLIOTT, IRENE M.**
Campus School, Second Grade
B. S., A. M., Teachers College,
Columbia University
- **ERICKSON, EMMA E.**
Technique of Teaching
B. S., A. M., University of
Minnesota
State Teachers College,
Moorehead, Minnesota



- **GRAGG, GEORGIA P.**
Penmanship
Western Washington College of
Education
A. N., Palmer School of
Penmanship
- **HICKS, ARTHUR C.**
English
A. B., A. M., University of
Oregon
Ph. D., Stanford University





- **HOPPE, VICTOR H.**
Speech
A. B., Denison University
Curry School of Expression
A. M., Northwestern University
University of Chicago
University of Michigan

- **HOPPER, ELIZABETH M.**
Secretary, Appointment Bureau
A. B., Smith College
A. M., University of California



- **HUNT, THOMAS F.**
Social Science
A. B., University of Minnesota
A. M., Clark University
University of Chicago
University of California

- **JOHNSON, FLORENCE E.**
Science
B. S., University of Washington
A. M., Mills College



- **KANGLEY, LUCY**
English
A. B., A. M., University of Washington
Graduate Student, Columbia University

- **KIBBE, LYNUS A.**
Education
B. S., McMinnville College
A. B., A. M., University of Washington
A. M., Columbia University
University of Chicago
Western Washington College of Education



- **KINSMAN, PRISCILLA**
Campus School, Pre-Primary
Ph. B., in Education, University of Chicago
A. M., Teachers College, Columbia University

- **LAPPENBUSCH, CHAS. F.**
Physical Education
B. S., University of Washington

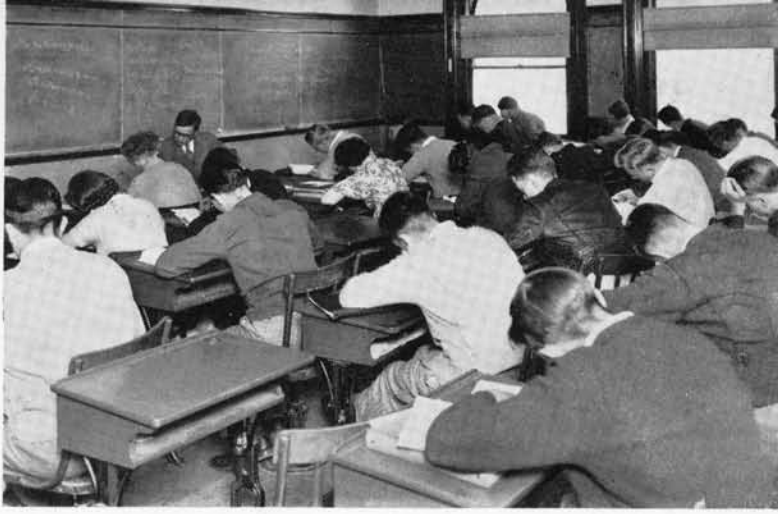


- **LONGLEY, GERTRUDE**
Home Economics
B. S., A. M., Teachers College, Columbia University
University of Chicago

- **LOVEGREN, MAY G.**
Typewriting
Vashon College
Washington State College

• Music . . . Boson leading sight-singing class.





• Dr. Bond's
Math class.

- **LUSTERMANN, PAUL**
Band and Orchestral Instruments
Royal Conservatory, Leipzig,
Germany

- **MARQUIS, W. J.**
Education
A. B., A. M., University of
Washington

- **McILVAIN, DOROTHY S.**
Art
A. B., University of Washington
A. M., Teachers College, Columbia
University

- **MEAD, MAY—R. N.**
Nurse
Northwestern Sanitarium, Port
Townsend, Washington
University of Washington

- **MERRIMAN, PEARL**
Campus School, Fourth Grade
A. B., A. M., State Teachers
College, Greeley, Colorado
Teachers College, Columbia
University

- **MILLER, IRVING E.**
Education
A. B., University of Rochester
A. M., Ph. D., University of
Chicago

- **MOFFATT, MILDRED V.**
Campus School, Third Grade
University of Chicago
University of California
Columbia University

- **ODOM, EVELYN**
Campus School, Fifth Grade
A. B., Winthrop College, Roch
Hill, South Carolina
A. M., Teachers College, Columbia
University

- **OSSINGER, MARY**
Science
B. S., University of Washington
School of Nursing
Certificate in Public Health
Nursing, University of
Washington

- **PHILIPPI, H. C.**
Science
B. S., A. M., University of
Missouri
University of Washington
University of Chicago
State Teachers College,
Warrensburg, Missouri





• **PLATT, RUTH E.**
Science
B. S., M. S., University of Washington

• **PLYMPTON, HAZEL**
Art
Ph. B., University of Chicago
Reed College, Portland, Oregon
Art Museum, Portland, Oregon
Summer School with Arthur W Dow



• **POTTER, PAULINE**
Campus School, Sixth Grade
B. S., M. S., Kansas State Teachers College, Pittsburg, Kansas

• **RICH, MARY E.**
Dirertor of Training School
B. S., A. M., Teachers College, Columbia University



• **RICHARDSON, CHARLOTTE B.**
Industrial Arts
B. S., A. M., Columbia University
Westfield State Normal School, Westfield, Massachusetts

• **RUCKMICK, HERBERT G.**
Industrial Arts
B. S., A. M., Teachers College, Columbia University
University of Illinois



• **RUPERT, EVELYN**
Physical Education
B. S., M. S., Ohio State University

• **SNOW, MIRIAM B.**
Librarian of Children's Literature
A. B., New York State Teachers College
M. S., B. S., School of Library Service, Columbia University
A. M., Teachers College, Columbia University



• **STRANGE, EDITH R.**
Piano
Graduate, Whitworth Conservatory at Tacoma, Washington
Oberlin College

• **SUNDQUIST, LEONA**
Science
A. B., M. S. University of Washington
Graduate Student, Teachers College, Columbia University

• Geography . . . Dr. Hunt leads discussion.





• Science . . . Platt directs microscopic study.

• **TRENT, E. WILMA**

Supervisor of Intermediate Grades
in City Schools
A. B., A. M., University of Iowa
University of Chicago
Teachers College, Cedar Falls,
Iowa
University of California

• **ULLIN, ANNA**

Languages and English
A. B., University of Washington
Certificate from the Sorbonne,
Paris
A. M., Teachers College, Columbia
University

• **UPSHALL, C. C.**

Research and Education
A. B., University of British
Columbia
Ph. D., Teachers College,
Columbia University
Provincial Normal School,
Victoria, B. C.

• **VAN PELT, RUTH**

Campus School, Seventh Grade
A. B., University of California
A. M., Teachers College, Columbia
University

• **WENDLING, ELSIE**

Supervisor of Upper Grades in
City Schools
B. S., A. M., Teachers College,
Columbia University
Teachers College, DeKalb, Illinois
University of Wisconsin

• **WEYTHMAN, RUTH**

Physical Education
B. S., University of Washington
A. M., Teachers College, Columbia
University
University of California

• **WIIK, NAN DYBDAHL**

Voice
A. B., University of Norway
Studied in Oslo, Norway; Milan,
Italy; Paris and Berlin.

• **WILLIAMS, JOHN R.**

Violin
University of Michigan
American Conservatory of Music,
Chicago
University of California

• **WILSON, MABEL ZOE**

Librarian
A. B., Ohio University
B. L. S., New York Library
School

• **WILSON, R. D.**

Printing
I. T. U., School of Printing,
Indianapolis
Practical Experience in Printing





Classes



DEGREE SENIORS

- Jensen, Howie, Barnhart, Snyder
- Jacobson, Padden

(Not in picture: Angel, Jerome, Jacobson, Launer, Nelson, Slawson, Schaeffer, Tassell, Weeks)

COMMENCEMENT COMMITTEE

- Lund, Barnhart, Holm
- Carroll, Acklen, Kane



- RUTH CARROLL, President; MARION HAYDEN, Vice-President; GLEN WILLISON, Secretary; DR. E. A. BOND, Class Advisor



JUNIOR-SENIOR CLASS

- To the Junior-Senior class goes the credit for having two of the most novel parties held during the year.
- The barn dance, attended by everyone in costum, will long be remembered . . . Bouquets go to Helen Acklen and her committee for their work . . . The southern plantation frolic under Mary Jane Moergeli's direction was another hit.
- With capable Ruth Kulle Carroll at their head the Junior-Seniors completed a very successful year.

HELEN ACKLEN
Portland, Oregon

DOTE ALLEN
Waldron

SOPHIE ANDRLE
Bellingham

DOROTHY ARESKOVICH
Aberdeen

ALICE ARMSTRONG
Seattle

VIRGINIA BARBO
Bellingham

MILDREN BEAN
Anacortes

RUTH BELKNAP
Chinook

MARGARET BERTRAND
Vancouver, B. C.

LYDIA BLACK
Grandview

MILDRED BLAIR
Mount Vernon

HURLEY BOGESS
Seattle

ELSIE BOLING
Mount Vernon

VESTA BOLLINGER
Fruitland

HOMER BOROUGHS
Bellingham



• Lively is the word for **JOAN HOPPE** . . . Ruled the Western Viking staff with a grin . . . Was voted most popular girl on the campus in 1936 . . . She is a Valkyrie . . . Her deadliest weapon is the pun.

• As winter and spring Western Viking editor, **HARRY KLUGE** liked to air controversial issues . . . Was happiest when the battle raged . . . Also exhibited his battling tendencies on the intra-mural floor . . . Went to the mat at a W club smoker.



VIVIAN BOYD

Auburn

AL BRANDT

Bellingham

ELLENER BREAKEY

Bellingham

LOUISE BRYSON

Sedro-Woolley

JEAN BURDETT

Trout Lake

ALDA CARSON

Vancouver, Wash.

PETER CARLSON

Aberdeen

ALLIE CHABAN

Aberdeen

BETTY CHAPMAN

Everett

ALSINA CHRISTENSEN

Granite Falls

INEZ CLIBON

Dixie

LORETTA COLBANK

Snohomish

DORIS CONDOGEORGE

Everett

JEWELL COUNTRYMAN

Monroe

JO CURTIS

Granite Falls

ANNE DECKER
Bellingham

RUTH DECKER
Bellingham

MELBA DE MENT
Silverdale

MARGARET DE SPAIN
Chehalis

JOE DOLAN
Bellingham

JEAN DUGGAN
Kirkland

ERNEST DZURICK
Enumclaw

JAUNITA EGELAND
Friday Harbor

HERB ELSNER
Zenith

ADELLA EVERETT
Kirkland

DOROTHY EVANS
Seattle

BETTY EWING
Bellingham

VIRGINIA FAUCETT
Darrington

MURIEL FERGUSON
Aloha

MARY FISHER
Bellingham



• Although not very big, **MARY JANE MOERGELI** nonchalantly shoulders a surprising amount of responsibility . . . As a junior she was Edens Hall social chairman . . . Managed informals . . . This year neatly balanced the Women's League presidency with her school work.

• **WARREN TOMS** talks at any and all times and never misses a rec hour . . . Divides his time between Viking and Klipsun staffs, Vanadis Bragi, band, and plays . . . Has dramatic ambitions . . . Distinguished himself as Don Pedro in "Much Ado About Nothing."



JOYCE FORBES

Kirkland

BLANCHE FROST

Sumas

MARY GASTON

Seattle

CATHERINE GERI

Bellingham

GERTRUDE GILSHANNON

Bellingham

BERNICE GLENN

Bellingham

MARGARET GREELY

Ridgefield

GLEN GRESETH

Bellingham

KERN GRIMES

Bellingham

DICK HAGMAN

Seattle

FRANCES HALL

Mount Vernon

GRACE HALL

Snohomish

GEORGIA HARRIS

Seattle

DOROTHY HARTLE

Pendleton, Oregon

EILEEN HART

Bellingham

GLADYS HAUGE
Bellingham

HARRIOT HARMON
Wapata

STEWART HIBBS
Sequim

JEAN HOGLUND
Seattle

RUTH HAUGLUND
Anacortes

BEVERLY HOLIDAY
Bellingham

VIRGINIA HOLM
Naselle

ESTHER HOLMLUND
Hoquiam

HELEN HOLTEN
Seattle

RUTH HOOD
Bellingham

JOAN HOPPE
Bellingham

HELEN HOSTETTER
Bellingham

JOYCE JANSEN
Bellingham

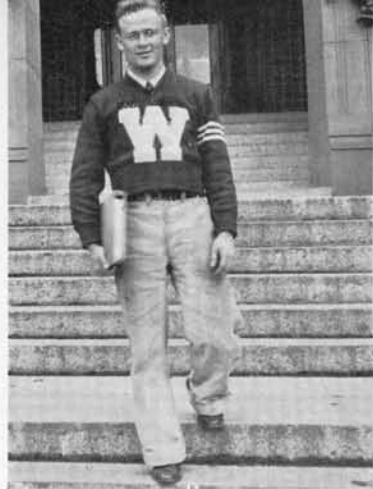
ELSIE JENSEN
Bellingham

JOHN JACOBSEN
Monroe



• Editor of the 1936 Klipsun, **HELEN HOSTETTER** deserves a place of honor in this one . . . Balances the books this year, making it her third year on the staff . . . Veteran Viking news-hound . . . Can be found most any time behind the desk in the children's library.

• Show **ARNE JOHNSON** a track and he'll burn it up . . . He is especially partial to 100's and 200's . . . Once served on the Board of Control . . . Was Vice-President of the Thespian society . . . reported for the Viking as a freshman.



JULIA JOHNSON

Custer

MARY ELAINE JOHNSTON

Bellingham

MARGARET KANE

Portland, Oregon



GERALDINE KENNEDY

Ritsil

ELIZABETH KEYES

Burton

MARGARET KLINGEMANN

Hansen, Idaho



MARGARET KOUDAL

La Conner

EVELYN KRALMAN

Freewater, Oregon

RITA KRALMAN

Freewater, Oregon



ESTHER KRETZ

Hoquiam

RUTH KULLE

Bellingham

KATHERINE KURTZ

Bellingham



MARY LAUNER

Bellingham

MYRDIE LECTURE

Seattle

LUCILLE LEE

Bellingham

FLORENCE LEWIS
Issaquah

BOB LINDSLEY
Bellingham

EDITH LINGBLOOM
Bellingham



MARY LUCCOLINI
Outlook

FLORENCE LUND
Everett

GENEVIEVE MAHONEY
Tolna, North Dakota



EVELYN MARTIN
Mount Vernon

LILLIAN MARTIN
Brush Prairie

LOUISE McBURNEY
Everson



MAUREEN McCLELLAN
Kent

MAE McDONALD
Everett

SARAH MAC DONALD
Bellingham



VIVIAN MILLS
Port Orchard

GERTRUDE MINICH
Seattle

MARY JANE MOERGELI
Enumclaw



• "One of the funniest people in school" is **HELEN ACKLEN'S** reputation . . . But she can be serious on occasion . . . A member of the Board of Control . . . Played "Ursula" in "Much Ado About Nothing" . . . Both Valkyrie and WAA claim her.

• The word chairman seems to follow naturally after the name of **MARION HAYDEN** . . . Witness her success as the general chairman of last Homecoming activities . . . Perhaps one of the secrets of her success as a manager lies in her good nature.



HELEN MONSON
Seattle

ENID MONTEITH
Aberdeen

FERN MONTEITH
Aberdeen

RUTH MORLEY
Rolling Bay

HOMER MORRIS
Portage

FRANCES MUELLER
Sedro-Woolley

KATIE MUSTAPPA
Bellingham

ROSETHA NEWMAN
Napavine

HAZEL OIE
Kent

CLARA OSEN
Mount Vernon

ANNA PADDEN
Bellingham

ELEANOR PARTRIDGE
Aberdeen

GLADYS PATTERSON
Carnation

EDNA PEARSON
North Bend

FRANCES PELEGREN
Bellingham

DOROTHY PETERSON
Tacoma

PHYLLIS PLUMMER
Bellevue

EDNA POINDEXTER
Mount Vernon

MAYNARD PONKO
Seattle

NEIL POWER
Snohomish

MARIAN PRICE
Kent

JACK REEVES
Vashon

GENE ROBOCKER
Creston, Montana

PHYLLIS ROBINSON
Klawock, Alaska

BOB ROLAND
Chehalis

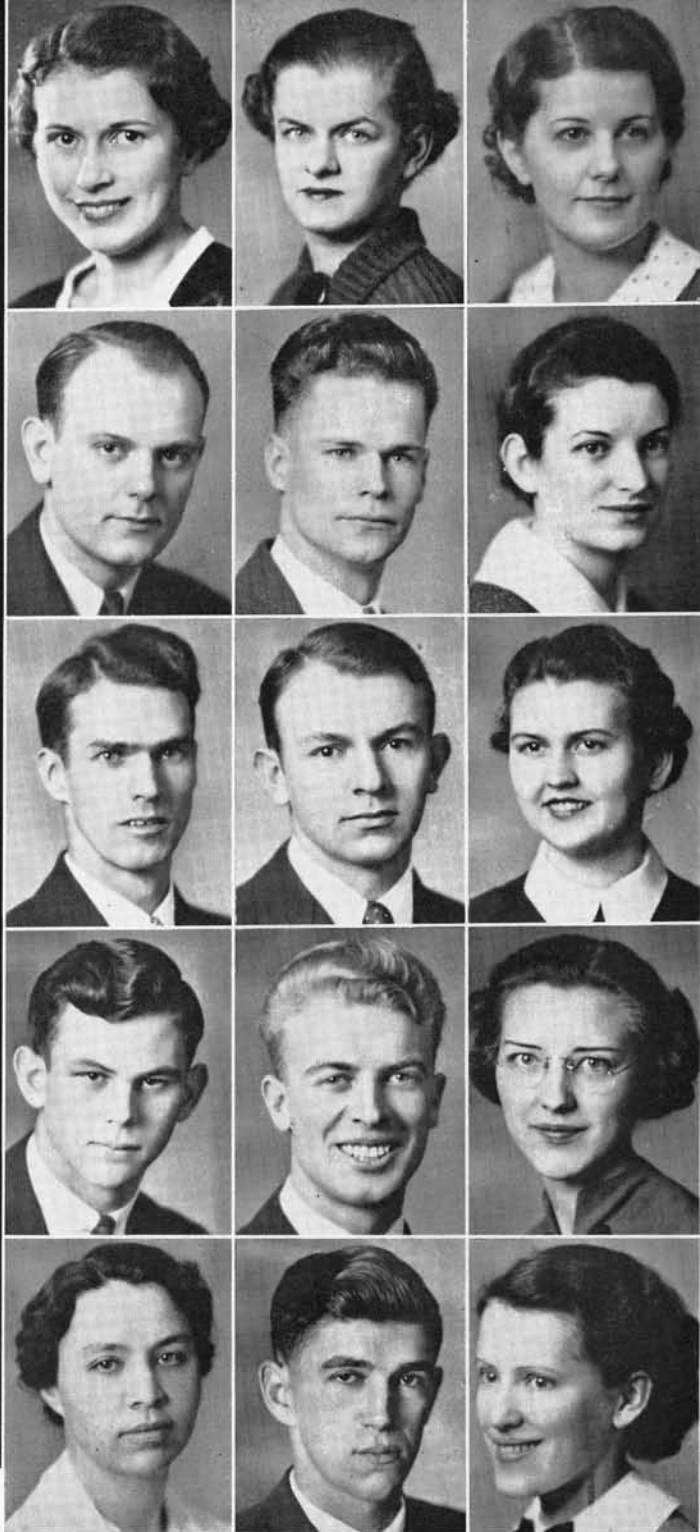
REX ROLLE
Olympia

PHYLLIS ROSE
Bellingham

MRS. ETHYL ROSS
Anchorage, Alaska

WINSTON SANDERS
Edmonds

ANNA SATHER
Lakewood



• Four-year letterman **CHET ULLIN** never missed a football game . . . Never missed a turnout . . . Loves to ski . . . Acts as a guide in the Olympic mountains summers . . . Managed this year's Campus Day water sports . . . Is a member of W club.

• **RUTH KULLE CARROLL** can invariably be found where things are going on . . . Behind the General Circulation desk in the library . . . On the Board of Control . . . Or speaking in assembly . . . Was queen of Class Day . . . Her wide smile is especially contagious.



IRENE SCHAEFFER

Katzebue, Alaska

MARIE SCHMIDT

Ramona, South Dakota

GRETCHEN SHULTZ

Mount Vernon

FLORENCE SIEGLER

Aberdeen

INEZ SJOGREN

Cosmopolis

KATHERINE SLAWSON

Oregon City, Oregon

MRS. MURIEL SNYDER

Waterville

WESLEY SCHUMANN

Chicago, Illinois

BETTY SOLLID

Dutton, Montana

LOTTIE STOKER

Marysville

MARY LOU STRITZEL

Bellingham

ALICE TASSELL

Douglas, Alaska

MARGARET THIEL

Bellingham

JOE THOMAS

Manitou Springs, Colorado

MARGARET THON

Bellingham

ED TOMCO
Seattle

WARREN TOMS
Bellingham

STEVE TURK
Aberdeen

HELEN ULLEVIG
Seattle

CHET ULLIN
Seattle

MARGARET VAIL
Monroe

MARY VALICH
Bellingham

DEBORAH VICKERY
Seattle

MARIE VON SCHEELE
Afognak, Alaska

JUNE WEEKS
Kelso

JUNE WECKWORTH
Seattle

IDA WILLIAMS
Skamania

GLEN WILLISON
Bellingham

DOROTHY WILSON
Aberdeen

MARGUERITE WINTERHALTER
Greenough, Montana



● The smiling lad who would not let you in without your student body ticket was **BOB BARNHART** . . . He served on the Board of Control . . . Was also Vice-President of the Junior-Senior class.



(Not in school fall quarter)

DON HOLDER
Aberdeen

HARRY KLUGE
Bellingham

META KRUSE
Seattle

LOUANE PINCKNEY
Bellingham

BASHFUL GRADS

EDGAR ANGEL
Bellingham

ROBERT BARNHART
Okanogan

JEROME JACOBSON
Seattle

JEANNETTE NELSON
Seattle

WILLIAM WEEKS
Shelton

FRANCES GERBER
Rockport

GERALDINE GERBER
Rockport

ADA GORLON
Acme

MIRIAM HOWIE
Bellingham

MILDRED ANDERSON
Lynden

HALBERT BAILEY
Ferndale

NITA BEAK
Omak

EVA BOUCHER
Roundup, Montana

ZENNE BURROUGHS
Bellingham

EVELYN CHANDLER
Bellingham

FRANCES CHRISTENSEN
Elma

MARJORIE CHURCH
Tacoma

ELSABELLE CRUTTENDEN
Seattle

MAE DOHERTY
Lexington

NORMAJANE GORSLINE
Sitka, Alaska

WALTER HALL
Sedro-Woolley

JAMES HANSEN
Ferndale

MARION HAYDEN
Olympia

LAURA HINCHLEY
Port Gamble

JANE HOUGHTON
East Sound

MAXINE IDDINS
Bellingham

AMBEL IDEN
Hebron, Nebraska

ARNE JOHNSEN
South Bend

VIRGINIA KANARR
Blaine

JAMES LIVINGSTON
Winlock

MILLY McDONALD
Ferndale

PERCY MADDUX
Bremerton

FRANCES MARCH
Anacortes

JAMES MARTIN
Bellingham

AGNES MILES
Astoria, Oregon

JOHN MILLS
Port Orchard

MELVIN MOLLAN
Bellingham

RICHARD NEWLEAN
Bellingham

CHARLES PAINE
Snohomish

ITALKA RUNGE
Bellingham

JOSEPHINE SABLOCKI
Chehalis

MARY SCHNEIDER
Seattle

WYONA SCHREPPING
Vancouver, Wash.

LOUIS SHELTON
Ferndale

DORIS SILER
Randle

WILLIAM TAYLOR
Bellingham

MARGUERITE THOMPSON
Bellingham

ERLING THORSEN
Bellingham

DONALD TURNBULL
Tacoma

LEE TYLER
North Bend

DONALD WARNER
Forks

HOBART WISEMAN
Dryad

DOROTHY WOODWARD
Seattle

● A mile of track to **BILL TAYLOR** means just a warming-up . . . He covers a lot of floor in basketball, too . . . Does not confine his efforts entirely to athletics, having served four quarters as a representative to the Board of Control.



Baccalaureate Service

College Auditorium
SUNDAY, JUNE 6, 1937

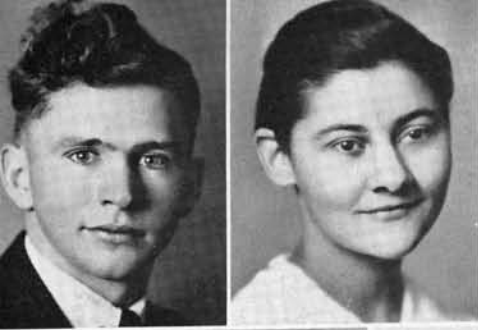
Processional	"How Firm a Foundation"
Invocation	Reverend Edward A. Wolfe
Hymn	"O, Worship the King"
Scripture Reading	President C. H. Fisher
Prayer	Reverend Edward A. Wolfe
"Holy, Holy, Lord God Almighty"	Handel Nan Dybdahl Wiik, Soprano Nils Boson, Accompanist
Baccalaureate Address	Reverend James Brett Kenna University Temple
Hymn	"Fairest Lord Jesus"
Benediction	Reverend Edward A. Wolfe
Recessional	"Glorious Things of Thee Are Spoken"



Thirty-Eighth Annual Commencement

College Auditorium
JUNE 10, 1937

Processional—"Festival March"	Borch College Orchestra
Invocation	Reverend Dwight C. Smith
"America, The Beautiful"	Audience
Commencement Address	Dr. Norman F. Coleman Reed College
Overture—"The Barber of Seville"	Rossini College Orchestra
Presentation of Class	President C. H. Fisher
Presentation of Diplomas	Dr. W. D. Kirkpatrick Chairman, Board of Trustees
Benediction	Reverend Dwight C. Smith



SOPHOMORE CLASS



● **BILL BRASHLER**, President; **FRITZ CHORVAT**, Vice-President (no picture); **BETTY SWISHER**, Secretary; **ANNA ULLIN**, Class Advisor.

● What with the juniors having barn dances and the freshmen coping originality honors by bringing forty U. of W. cadets to lend realism to a naval dance, the sophomores made their bid for novelty parties winter quarter with a "Sophomore Swing" . . . Prizes were given for novelty dances . . . Chairman Marian McCullough managed the affair . . . Spring quarter, hockey clubs, baseball bats, tennis rackets and golf clubs lent atmosphere to the sport dance held in conjunction with the Tri-college athletic meet . . . Clara VanderGriend was chairman.

- Dzedzie, Jackson, Byl, Engebretson, Cook, Cline, Downs
- Baird, Barnes, Franklin, Boal, Chorvat, Chase, Eckert
- Bowdish, Denny, Beak, Collett, Blandau, Arney, Axling
- Chambers, Barth, Cavis, Anderson, Clifton, Collen, Carlyle, Davis



- Moscrip, Knittel, Hardin, Hewitt, Krueger, Iverson, Kvinsland, Evich
- James, Greer, Holm, Frizzell, K. Hatch, Hoag, Kobervig
- Fox, Hatch, Gardner, Halstead, Kreiter, Green, Johnson, Hawley
- Hughes, Heaton, Barr, Jones, Knowles, Johnson, Kink



- Potter, Funk, Orloff, Engebretson, Nelson, McConnell, Scholler, Peasley, Little, Neil, Lundberg
- Pulver, Porter, Larson, Logan, Little, Newnham, Moe, Monsen
- Olsen, Hinchcliffe, Reasoner, Soukup, Peterson, Page
- Noice, Lammers, Larson, Moldrem, McCabe, McCullough, Leland, Pickett



- Ward, Kelley, Van Luven, Lundberg, Scholler, Wesseler
- Wanless, Witherow, Siemons, Wilson, Wilson, Zylstra, Willis, Valenta, Olmsted
- Hallgren, Wicklund, Thomas, Truax, VanderGriend, Tarte, Rossing
- Nilson, Swisher, Rowe, Williams, Streater, Seibel, Tucker





- Cary, Cucksey, Barker, Bellman, Brockway, Armstrong, Chase, Carver, Courtney, Anderson, Brooks
- Bishop, Beaty, Bennett, Bruff, Barnes, Clark, Baldwin, Bernsten, Brodahl, Lundberg, Chorvat, Bollerud
- Ash, Cowles, Aust, Bays, Armstrong, V. Anderson, Anderson, Cahail
- Bundt, Barthwaite, Allen, Allbough, Bey-erlin, Adams, Armstrong, Blandau



- Fowler, Hawley, Francis, Hanson, Hauser, Harvey, Heathers, Flynn, Winters
- Hatfield, Howatt, German, Hoag, Lundquist, Higginbottom, Heimberger, Harvey, Irvin, Hale
- Bjerstedt, Dunfee, Dunn, Daley, Elstad, Gookins, Gibbs, Fisher
- Genther, Dougan, Havland, Dunning, Hawk, Erven, Dorcy



- McNeill, Kreig, Kidder, Johnston, Murray, James, Kamperman, Lindstrom
- Gooding, Kallio, Magnuson, Lifvendahl, McFarland, McAulay, Martinson, McDougall, Miller, Pullar, Moe, Morris
- Laube, Nordquist, Lambier, Krick, McNeil, Monell, Miller, Mahan
- Mullen, Pierson, Molenkamp, Parker, Jacobson, Olson, Magnoche



- Wilkinson, Wessler, Wheeler, Strain, Westbeck, Westford
- Winship, Townsend, Wilson, Walsh, Sheckler, Tamm, Schons, Wiehe, Russell
- Rhodes, McNamee, Thayer, Kidder, Tripp, Wood, Tiplin, Southwick, Kent
- Sherk, Rogers, Sullivan, Masters, Wood, Hartzell, Denton, Weeks

FRESHMAN CLASS



● **TONY HOVIK**, President (no picture); **DON MCKINNON**, Vice-President; **LILLIAN PEARSON**, Secretary; **M. F. CEDERSTROM**, Class Advisor.

● The Freshman class quickly marshalled itself and marched confidently forward through the year . . . At the beginning of the year Tony Hovik was elected president . . . In his absence during winter and spring quarters Don McKinnon, vice-president, took charge of the class . . . At the Homecoming celebration the Freshmen successfully defended their bonfire from upperclassmen . . . They sponsored a Thanksgiving party with Tony Hovik in charge . . . Their Nautical Dance given spring quarter and managed by Herbert Strain was an outstanding party of the year . . . A dash of realism was added by the presence of forty NROTC guests from the University of Washington.



Athletics

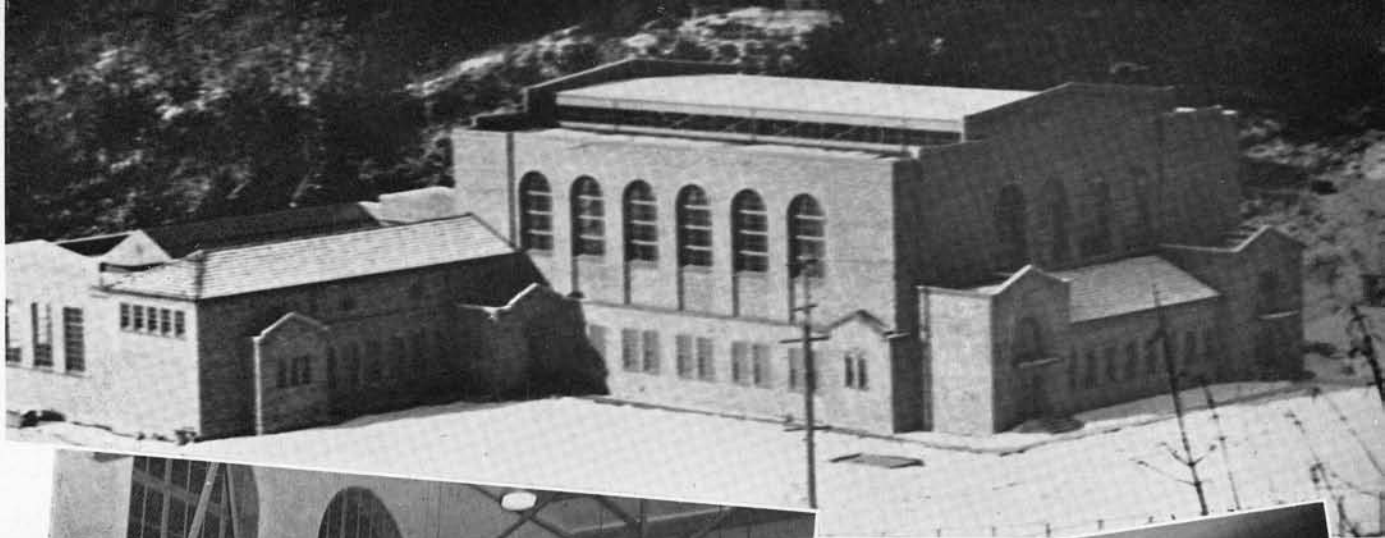


BEHIND THE GAMES



- Yell Leaders: Skinner, Canterbury, Weihe.
- Managers: Angel, Newlean, Nelson.

● Due to a number of financially lean years in athletics, a manager was appointed by the Board of Control for the first time in the history of WWC to pull the football and basketball setup out of the red . . . Ed Angel successfully handled the job and put the game back on a paying basis. . . . Maurice Nelson and Dick Newlean were general handy-men to all athletic teams . . . The victory songs and yells were given an added punch by Walt Skinner, Fred Weihe and Bob Canterbury, yell leaders.



NEW PHYSICAL EDUCATION BUILDING

● Officially dedicated at the Alumni Homecoming November 7, 1936, the opening of the new Physical Education building marked the beginning of a new athletic program . . . A spacious gymnasium, a luxurious swimming pool, locker rooms, showers, classrooms, and instructors' offices are included in the facilities of this latest addition to the campus.

1936 VIKING



Kvinfosland



Chorvat



Morris



Nagrodski



Mills



● Splitting the season with four wins and four losses, and winding up in the Tri-College cellar, the Vikings finished a not too successful season for 1936. Though not very impressive in the win column, the Western Washington Collegians boasted the strongest squad ever to be assembled under the tutelage of Coach Charles Lappenbusch.

● Scoring as they pleased, the Vikings snowed under a visiting Italian Athletic club, 32-6, in the season's opener. Led by Fritz Chorvat, the Western Collegians marched to their second victory with an impressive 19-7 win over a much heralded Gonzaga freshmen team. In this game Fred Krueger made the longest run of the season when he dashed 83 yards through a broken field for a touchdown.

VIKINGS	32	ITALIAN ATHLETIC CLUB	6
VIKINGS	19	GONZAGA FROSH	6
VIKINGS	9	ST. MARTINS	13
VIKINGS	0	PACIFIC LUTHERAN	13

- (semi-circle) Captain Ed Tomco
- Cheney attempts to block a Viking punt.
- Lappenbusch, Minnihan, Krueger, Wahl, Kinderman, Lange, Cline, Carlson, Peterson, Lande, Kemp, Nelson
- Mickle, S. Kvinfosland, Krieg, Davis, Westerbeck, Holtzheimer, Maski, Morris, Fox, Clifton, Kessel
- Willis, Johnson, Tomco, Claypool, Bengston, Ullin, Mills, Johnson, Tarte, Nagrodski, Chorvat

FOOTBALL

● Too anxious to run their winning streak to three straight, the Vikings were set back on their heels by the St. Martin Rangers, 13-9. The Collegians were leading at half-time, 9-0, but were unable to stave off a last half attack by the Rangers.

● In a fog that completely veiled the field, the Vikings won a 6-0 victory over the University of Washington freshmen—their first in several years. The most disappointing game of the year was played against a wide awake Pacific Lutheran eleven who continued their jinx with a 13-0 win over the Norsemen. The Vikings outplayed the Lutherans, scoring 10 first downs to 7, but the pass interception of the Gladiators proved too big an obstacle to the visiting North-erners.

VIKINGS	6	U. OF W. FROSH	0
VIKINGS	0	CHENEY	6
VIKINGS	6	ELLENSBURG	7
VIKINGS	20	OREGON NORMAL	6



Johnson



Mickle



Minnihan



Bengston



Tarte



- (semi-circle) Coach Charles Lappenbusch
- Clifton, star Viking back, breaks loose for a ten yard gain against the Homecoming Cheney Savages
- Center plunge nets Vikings two yards as Clifton is stopped by Captain Green, of Cheney



Kinnerman



Claypoole



Lange



Dzurick



Fox



Krueger



- The Tri-College season opened with Cheney as guests of the Vikings. The Western Collegians outclassed the visitors throughout most of the game, but were unable to stop a Savage aerial attack in the dying moments of the affair, which brought Cheney a 6-0 victory in the annual Homecoming.

- A journey into Oregon to continue relationships with the Monmouth Oregon Normal, which began on Thanksgiving Day, 1935, brought the Vikings their final victory 18-6. Leo Lange was largely responsible for the Norse win with his interception of a Monmouth pass and a 60-yard dash for a touchdown.

- By the margin of try-for-point, the Vikings were relegated to the cellar position in the Tri-College conference as the Wildcats eked out a 7-6 victory on the Ellensburg field. The game was the event of the Wildcat Homecoming.

- Circle—Chorvat about to be tackled by a Wildcat back after ripping off a large gain.

- Tarte, Viking fullback crashes through the center of the Ellensburg line.

● Outstanding players for the 1936 season included Morris Tarte, Ernie Dzurick, Ed Tomco, Fritz Chorvat, Cecil Clifton, Chet Ullin, Andy Maski, George Smith and Vern Peterson. Perhaps the most disheartening defeat of the year was the 13-0 loss to Pacific Lutheran College; the most satisfactory win was the 6-0 defeat of the U. of W. Frosh.

● Under the administration of Ed Angel as business manager, the football season of 1936 was by far the most successful financially. With the exception of the afternoon Homecoming game, all the home battles were fought under the lights of Battersby field. Good weather and large crowds added to the spirit of the game and to the popularity of the Western Washington Collegians in the hearts of the Bellingham fans.



Ullin



Holtzheimer



Kraig



Westerbeck



Maski



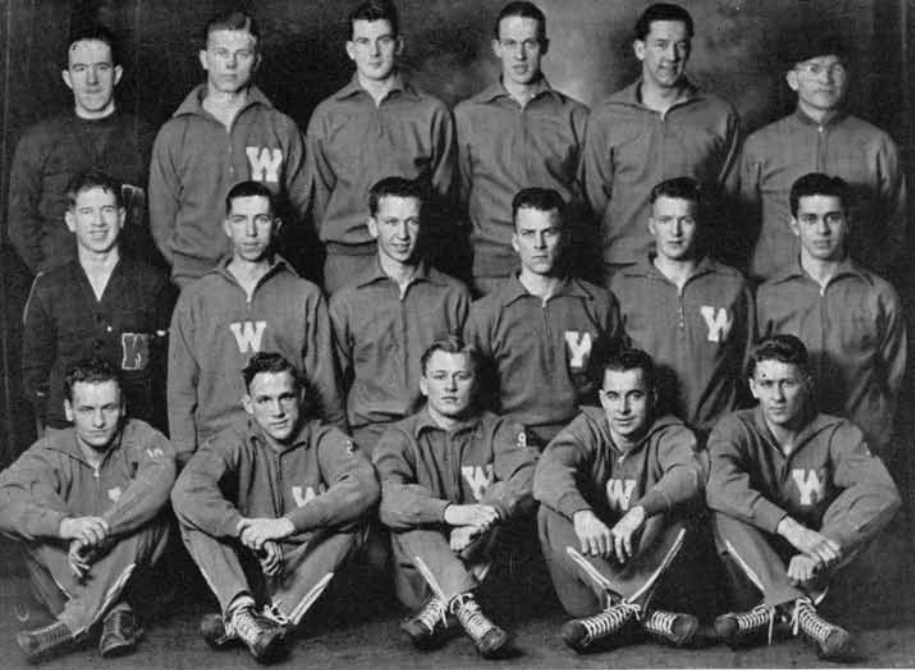
Davies



● Circle—Morris Tarte, winner of the inspirational award for the 1936 season. Tarte is a two-time winner of this honor.

● A Wildcat back being stopped by the Viking forward wall.





BASKET BASKET

Vikings	45	St. Martins	38
Vikings	39	Seattle College	27
Vikings	38	Seattle College	25
Vikings	39	C. P. S.	31
Vikings	26	P. L. C.	36
Vikings	25	P. L. C.	26
Vikings	38	U. of W. Frosh	37
Vikings	33	U. of W. Frosh	41
Vikings	52	Linfield	53
Vikings	40	Linfield	38

- Nelson, Reid, Carver, Phair, Nelson, Lappenbusch.
- Moscrip, Dzedzic, VanderGriend, H. Anderson, J. Anderson, Zambas.
- Gagnon, Taylor, Fox, Krueger, Dombroski.

● Following in the footsteps of their ill-fated brethren, the 1937 Viking basketball machine wound up in the Tri-College cellar after staging a late season comeback.

● Outstanding games of the year included a splitting of the series with the University of Washington Frosh—a successful invasion of Oregon institutions, including Linfield, Monmouth and Albany—victories over College of Puget Sound, Seattle College, and St. Martin's Rangers.

● Dick Carver and Harold Nelson were picked on Tri-College teams. Other outstanding players were Bud VanderGriend, Ted Dzedzic, John and Hugo Anderson, John Fox, Bob Phair and Danny Gagnon.



BALL

Vikings	27	Linfield	32
Vikings	50	Albany	30
Vikings	55	Albany	32
Vikings	47	Monmouth	33
Vikings	27	Monmouth	32
Vikings	27	U. of B. C.	32
Vikings	30	Cheney	33
Vikings	27	Cheney	53
Vikings	23	Ellensburg	46
Vikings	27	Ellensburg	25



● Nelson, Viking center, and Eustace of Cheney jump for the tipoff in the opening game of the Tri-College conference.

● Inability to shoot fouls cost the Vikings a victory in the opening encounter of the Tri-College conference against the Cheney Savages, 33-30. The game was played in the Viking pavilion.

● Invading the eastern Washington institutions, the Western Collegians met with disaster, losing to Ellensburg, 46-31. Moving on to Cheney the Vikings were routed, 53-27.

● In the return game with the Ellensburg Wildcats, the Norsemen staged a comeback and snatched the game out of the fire, 27-25. It was the first conference victory in five years.



Gagnon



J. Anderson



Phair



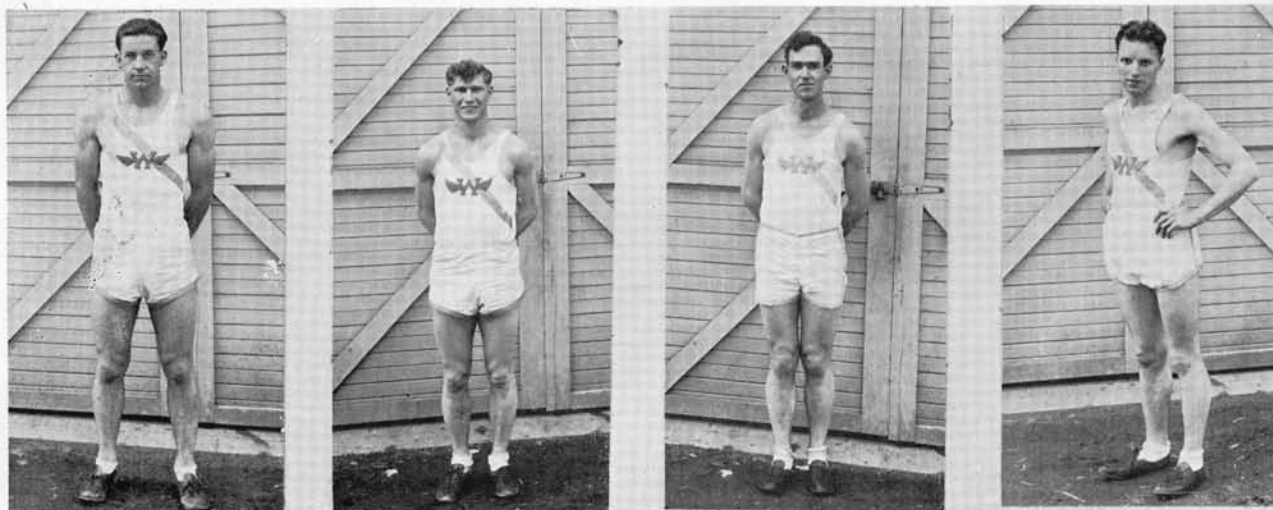
H. Anderson



Carver



Zambas



TRACK

- Losing to the Ellensburg squad, 72-59, and defeating the Puget Sound Loggers, 70-60, the Vikings showed promise of having a better than average team for the Tri-College meet held on the local track May 22.

- Minus the services of Bob Phair, versatile athlete, the Vikings wrote one in the loss column when the Ellensburg Wildcats took their measure in the first meet of the 1937 season. Don Holder was the outstanding star of the day with 18 points.

- Making clean sweeps in three events, the Vikings came from behind easily to defeat the Loggers from the College of Puget Sound. High winds enabled the runners to make unusually low time in the 100, 220 and 440-yard dashes.

- The balance of the season included a triangular meet with Ellensburg and the U. of W. Frosh on the University field, and the Tri-College meet on the local track.





- Nelson
Holder
Milholland
Funk
Bogges
Krueger



- McAulay
Phair
Taylor
Howatt

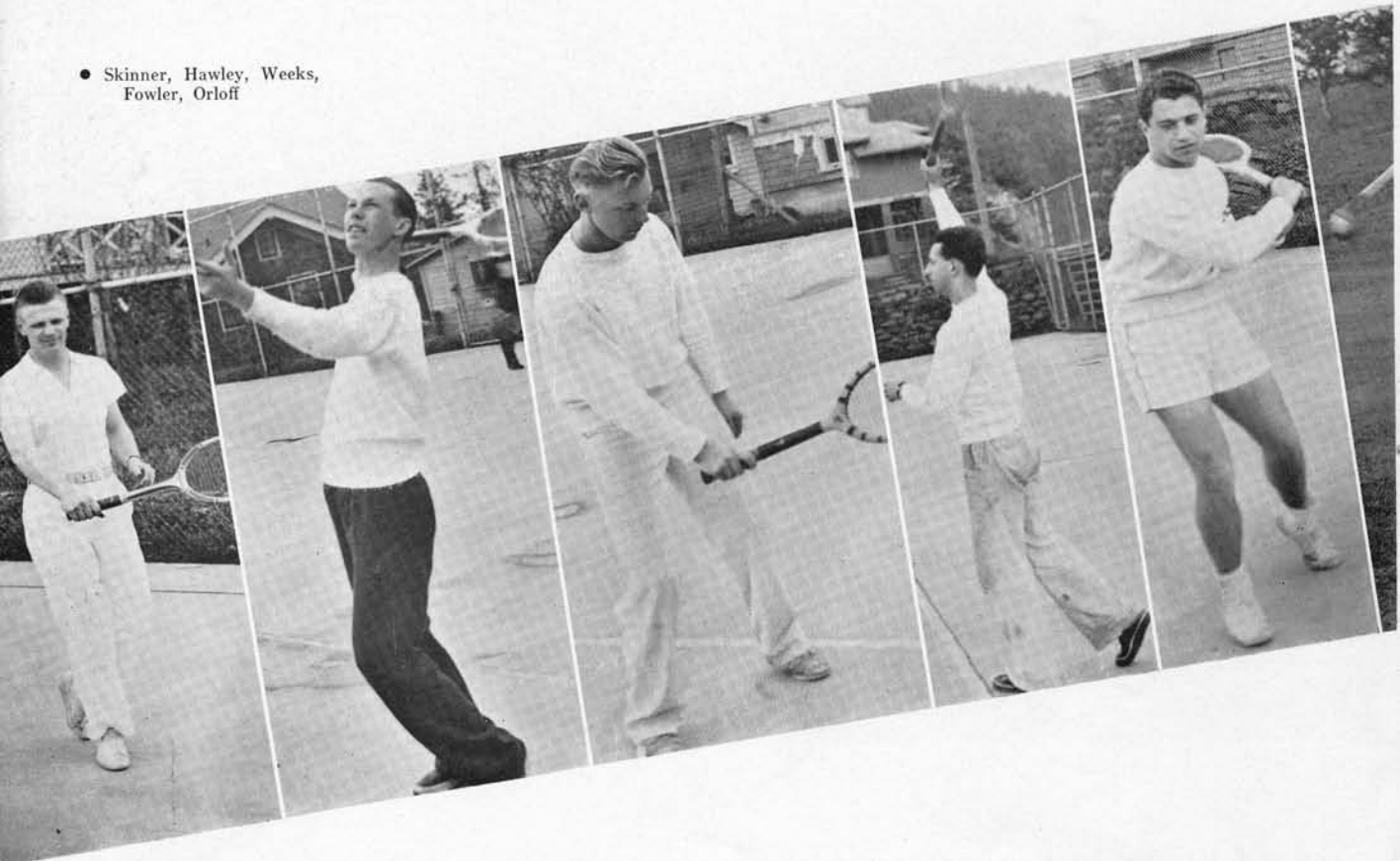


- Van Over
Thompson
Weber
Gagnon

TENNIS

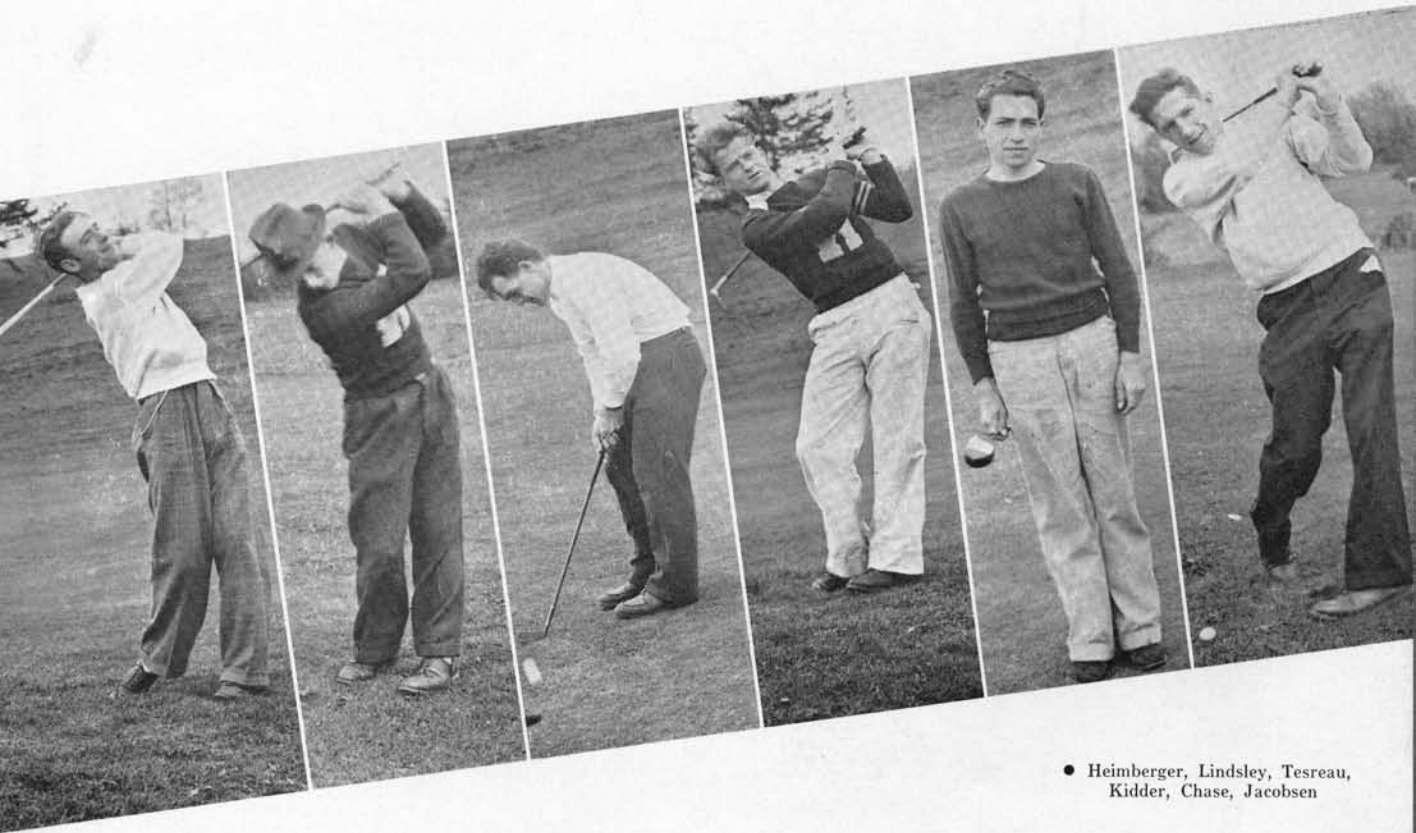
- By the loss of one match the 1936 Viking tennis champions had to content themselves with second place in the Tri-college meet. Unable to collect a single victory in previous games, the comeback of the Viking netman was regarded as sensational.
- With only the veteran Chet Orloff remaining from last year's squad Coach Lappenbusch had to revamp his entire team, drawing several recruits from his tennis classes. Chet Orloff, Walt Skinner, Bill Weeks, Dick Fowler, and Forrest Hawley formed the nucleus for the 1937 squad.

● Skinner, Hawley, Weeks, Fowler, Orloff



GOLF

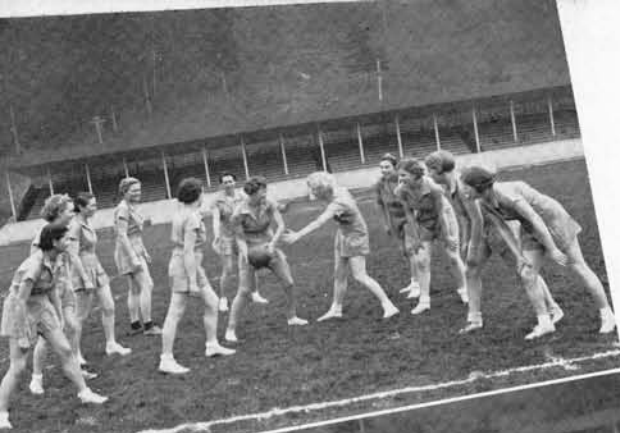
- Undefeated in all games played up until the time this book goes to press, the 1936 Viking golf champions were conceded an even chance to retain their title in the 1937 Tri-college meet.
- The number one position on the team was filled by Phil Kidder, with Jacobson, Lindsley, Tesreau, Heimberger, and Chase following in the order named. Tesreau and Heimberger were newcomers to the squad, and added greatly to the strength of the team.
- Invincible in all of their games, the Vikings handed out double defeats to the University of British Columbia, Pacific Lutheran College, and College of Puget Sound. Remaining on the schedule are return games with Ellensburg, and the U. of W. Frosh, and participation in the Tri-college meet.



● Heimberger, Lindsley, Tesreau, Kidder, Chase, Jacobsen

WOMEN'S

● To present a variety of sports so that every woman in school might find at least one to her liking has been the aim in planning the sports program this year . . . An attempt to make a definite correlation between the physical education classes and the Women's Athletic Association program has led to actually participating in intramural activities rather than spending weeks on fundamental techniques . . . This will be an outgrowth of the new physical education set-up . . . So that women who are interested may enjoy one specific sport for a whole year rather than turn out twice a week for one quarter, individual activities have been organized as all year sports . . . These include hiking, riding, golf, archery, tennis, badminton, and swimming.



- Speedball, hockey, basketball, badminton.
- Weythman (in circle)

SPORTS

● Ping pong and shuffle board are fast becoming favorite pastimes . . . "Blue Barnacles," the newly organized swimming club, has provided swimming each week throughout the entire year . . . Hiking, riding, archery, tennis, badminton, golf and dancing could be easily similarly organized . . . Organization of individual sport clubs will not interfere with the seasonal sports, hockey, volleyball, basketball, speedball, and baseball . . . These fast group games, developers of sportsmanship and cooperation, are needed to strengthen the athletic program . . . Under the advisorship of Coach Evelyn Rupert, many changes have been made . . . The facilities of the new physical education building have made possible the addition of many sports.

- Soccer, baseball, volleyball, swimming.
- Rupert (in circle)



ADDITIONAL SPORTS



- Intramural baseball
- Sparring in the headline bout of the W club smoker
- Kluge gets a neckhold on Friedman before the gong

● After a delayed absence of one year due to a measles epidemic, the W club again staged its annual smoker . . . Under the capable direction of Bob Stuart and Stan Willis, this affair proved to be a success.

● Bouts on the Smoker program included wrestling matches between Herbert Strain and Art Morse, Bellingham policeman, and Harry Kluge and Ralph Friedman . . . On the boxing list, arranged according to matches, were Glen Willison-Johnny Valenta, Virgil Heimberger-Woody Evans, Maurice Nelson-Stan Willis, Jim Miller-Macrea Stone, and an exhibition between Truman Kennedy, professional fighter, and Don Wilson.

● Intramural baseball was started late in spring quarter . . . Outstanding teams playing in the league included Viking Manor, Barton's Hall and the Western Viking.

INTRAMURAL



● TESREAU



MEAT PACKERS

- Murphy, S. Kvinsland, H Kvinsland, Willis
- Alexander, Dzurich, Krueger

VIKING MANOR

- Iverson, Larson, Dwelley, Mickle, Jacobson
- Turk, Brooks, Kluge, Sanders, Chase

● Intramural basketball enthusiasts came out in such numbers that the 1936-37 league was divided into two sections, A and B . . . Don Turnbull piloted his band of Meat Packers undefeated to the A league title, while the Co-op entry stole the show in the B league after nearly being eked out by the Frosh team . . . No playoff was held between the two leagues, the title being conceded to the A league Meat Packers . . . Burly Jeff Tesreau emerged victor in the annual six week foul shooting contest, caging 77 out of 100 shots.



Organizations



ASSOCIATED



● Richardson, Bushell, VanderGriend, White, Zylstra, Tomco, Wilson,
Boal, Padden, Willison

● Prolonged meetings, diversified activities, complicated finances, concerted effort, and many more go to make a student body position intriguing. All in all, it was a grand experience — and fun. Thanks for the genuine support.

FLORENCE LUND.

● Spring quarter with its making of the budget, Campus day, and the Tri-college athletic events has been an outstanding success. It is the wish of the student administration that the spirit shown during the last quarter of each year be made to continue throughout the whole school term. We are entering a new era under a new name. Let us work and play more efficiently together to build a school worthy of this name.

DONALD ZYLSTRA.

STUDENTS

FALL QUARTER

FLORENCE LUND *President*
 BEVERLY HOLIDAY *Vice-President*
 BERYL WISE *Secretary*
 BOB BARNHART, RUTH CARROLL, ANNA PADDEN, BILL TAYLOR,
 HELEN ACKLEN, ED TOMCO *Student Representatives*
 DR. MOYLE CEDERSTROM, MR. SAM CARVER . *Faculty Representatives*

WINTER and SPRING

DON ZYLSTRA *President*
 FRANK CHORVAT *Vice-President*
 GLEN WILLISON *Secretary*
 VIRGIE BOAL, ED TOMCO, ANNA PADDEN, BILL TAYLOR, DON
 WILSON, HELEN ACKLEN, CLARA VANDERGRIEND,
 BOB WHITE *Student Representatives*
 MR. DONALD BUSHELL, MISS CHARLOTTE RICHARDSON,
 MR. SAM CARVER *Faculty Representatives*



• Acklen, Padden, Cederstrom, Richardson, Tomco, Lund, Wise, Barnhart, Holiday, Carver, Carroll, Taylor



• LUND



• HOPPE



• NELSON



• BOOTHE

- EDITORS-IN-CHIEF—Joan Hoppe, Harry Kluge
- BUSINESS MANAGERS—Helen Boothe, Lloyd Nelson
- ADVERTISING MANAGERS—Don McNeil, Gus Gissberg
Warren Toms
- NEWS EDITORS—Lucille Lee, Lloyd Nelson, Sybil Hinchliffe
- SPORTS EDITORS—Lloyd Nelson, Clarence Soukup
- FEATURE EDITORS—Katherine Hatch, Don Zylstra,
Virginia Kanarr, Dick Fowler
- SOCIETY EDITORS—Frances Pelegren, Sybil Hinchliffe,
Helen Hostetter
- COPY EDITORS—Bob White, Rex Rolle
- ART EDITOR—Jean Hatch
- Special Writers and Reporters—Virginia Anderson, Gladys Axling, Jeanne Borgstedt, Betty Bowdish, Jack Carver, Frances Daley, Joe Dwelley, Mitchell Evich, Henry Francis, Gus Gissberg, Don Gooding, Patricia Green, Glen Greseth, James Hanson, Forrest Hawley, Virgil Heimberger, Beverly Holiday, Betty Howell, Richard James, Ed Johnston, Mary Johnston, Ed Kamperman, Dorothy Lerch, Don McNeil, Bob Minnihan, Lillian Morton, Dorothy Nagle, Ralph Neil, Marge Osler, Margaret Perkins, Marion Peterson, Louane Pinckney, Jack Rauch, Phyllis Robinson, Merna Rowe, Walt Skinner, James Taylor, Margaret Thon, Janet Thorne, Ole Thorsen, Warren Toms, Gayle Wash, Bob Wiehe, Jean Wellington and Jack Whitmore.

VIKING STAFF

● The main task of these journalists is to have the Western Viking at the main landing every Friday noon . . . The old name, Northwest Viking, was dropped when the name of the school was changed . . . Fall quarter, Joan Hoppe returned to school as editor with Helen Boothe as business manager . . . Winter and spring quarters saw Harry Kluge installed as chief . . . Lloyd Nelson balanced the books spring quarter . . . Each staff member who serves four quarters is awarded a Viking pin.

● KLUGE

● Hoppe, Nelson, Rolle, Colling, Anderson, McBurney, Bowdish, Toms, Thorne, Gooding, Thon, Lee, Borgstedt, Hinchliffe, K. Hatch, White, Nagle, Kanarr, J. Hatch, Johnston, Soukup, Robinson, Kluge



KLIPSUN



• Thorne, Jensen, Soukup, Toms, Lee, Hatch, Reasoner, Thon, Hostetter



• THON

MARGARET THON	<i>Editor</i>
HELEN HOSTETTER	<i>Business Manager</i>
MISS ANNA ULLIN	<i>Advisor</i>
LUCILLE LEE	<i>Assistant Editor</i>
ELEANOR REASONER	<i>Art Editor</i>
M. C. DICKINSON	<i>Photography Editor</i>
DON REEVES, WARREN TOMS	<i>Assistant Photography Editors</i>
JEANNE BORGSTEDT	<i>Class Editor</i>
CLARENCE SOUKUP	<i>Men's Sport Editor</i>
JACK CARVER	<i>Assistant Men's Sports Editor</i>
ELSIE JENSEN	<i>Women's Sports Editor</i>
MARY CHICON	<i>Organizations Editor</i>
MARGARET JANE BRUFF	<i>Administration</i>
LOUISE MCBURNEY	<i>Typist</i>

STAFF

● Another Klipsun is out . . . another school year closes . . . A very successful year from the standpoint of progress . . . Enrollment markedly increased . . . a new program put athletics on a paying basis . . . the long dreamed-of physical education building became a reality . . . the impressive "Western Washington College of Education" now graces our official letterheads.

● The 1937 Klipsun staff is fortunate in being able to record such a year . . . We have used as our theme "College Life" with the hope that through an informal portrayal of events and people we may capture this spirit of progress.

● HOSTETTER



- White, Hatch, Bruff, Borgstedt, Hostetter, Soukup, Toms
- Reasoner, Lee, Chicon, Ullin, Thon



● With an executive committee instead of the usual president, the Men's Club of WWC was reorganized this year, largely through the efforts of Homer Boroughs . . . With Dr. Irving E. Miller and W. J. Marquis as co-sponsors, the Men's Club is once more represented in the Inter-Club Council . . . Sponsored two dances during winter quarter, an all-school party and an informal, all of which were successful . . . The present members of the executive committee are: Hurley Boggess, Robert McConnell, Ed Tomco, Frank Chorvat and Rex Rolle, each of whom in turn acts as chairman.

MEN'S CLUB



● Boroughs, Tomco, Chorvat, Boggess, Rolle



● MOERGELI



● Reasoner, Johnson, Kane, Hatch, Robinson, Holm, McClellan, Moergeli, Meuller, VanderGriend, Countryman.

WOMEN'S LEAGUE

● Following a course planned by the Women's League Commission at their pre-school conference, the League has passed another successful year . . . The Campus Sister campaign which made Freshman girls welcome . . . The Kid Party with its suckers and games . . . The two assemblies each quarter, all different, all entertaining . . . The three informals off campus . . . The weekly teas sponsored by clubs and organized houses . . . The fall and spring fashion teas at Edens Hall . . . These were the more obvious successes . . . Behind the scenes the Commission worked faithfully to make them possible.



I. R. C.

- Elsner, Niel, Finley, Power, Frizell
- Davis, Pickett, Clibon, Fackler, Hartle



Y. W. C. A.

- Boyd, Nygard, Schmidt, Miss Mead, Orr
- R. Kralman, E. Kralman, Ash, E. Blandau
- Decker, Anderson, Kretz, Harris, Sperry
- Fackler, Barthwaite, Davis, Tucker, F. Blandau

• A small part of an international organization, the International Relations club, studies to be well informed on all world problems . . . Mildred Fackler, president, and Neil Power were sent as delegates to Victoria, B. C., to the Northwest District International Relations club conference . . . The club also belongs to the Carnegie Foundation.

• The Y. W. C. A. offers an opportunity for girls interested in church work . . . Helen Davis has been the club's president and leader in the weekly prayer meetings . . . Many missionaries and evangelists have attended these meetings and the conferences at The Firs.

● Just one way of showing off the might and muscle of the men of the school was the Smoker sponsored by the W club . . . The dance at the Shell was another way of showing off—the girl friends . . . Ed Tomco was the president for the past year.

● Starting out by making money doing a successful job of selling chrysanthemums and ending by spending it on a cruise the Valkyries put in three full and interesting quarters under the leadership of Marion Haydon, Phyllis Robinson and MarthaLou Pulver . . . Their Sport dance of winter quarter will long be remembered.

W. Club

- VanderGriend, Tomco, Dombroski, H. Nelson, Moscrip, M. T. Nelson, Coach Lappenbusch, Phair.
- Krueger, Iverson, Taylor, Johnson, Ullin, Boggess, Dzurick, Orloff, Holder, Chorvat.



Valkyrie

- Westlake, Thomas, Greer, Jensen.
- Plummer, VanderGriend, Johnson, Hoppe.
- Barr, Williams, Borgstedt, Cruttenden.
- Boothe, Pierson, Franklin, Gorsline.
- Minich, Crandell, Acklen, Moldrem.
- Oxford, Jones, Thompson, Reasoner, Pulver.
- Robinson, Swisher, Miss Lea, Johnson, Thon.
- Shirk, Osler, Lee.



Scholarship

- Bever, Knittel, Dzurick, White, Hovan
- Decker, Ross, Green, Holiday, Hatch



Scepter and Shield

- Baldwin, Armstrong, Oie, Logan, Bever, Ross, Everett, Johnson
- Winship, Rose, Weckworth, Cowles, Blandau, Barnard, Siler
- Swisher, Price, Armstrong, Southwick, Tiplin, Barth, Duggan

• Introduced at a quarterly banquet, new members of the Scholarship society are required to report on a scholarly subject as part of their initiation . . . Only students with a high grade point average are admitted . . . Mrs. Ethel Ross was president for the past year.

• For the girls in school who are interested in the Campfire organization, a club was formed called the Scepter and Shield . . . Members of this group are learning to be guardians and leaders in other Campfire societies as well as having social activities . . . Alice Armstrong was the first prexy of the club.

- Led by Mildred Bean, as president this past year, the Alkisiah club studied and discussed in meetings the fine arts of many foreign countries . . . They sponsored several luncheons for assembly speakers . . . During spring quarter the club went on a cruise to Viqueen Lodge on Sinclair Island.

- Play days seemed to be the theme of the WAA this year . . . So successful was the annual high school play day, that the WAAers decided to have another for the women of WWC . . . Betty Ewing, last year's delegate to Minneapolis, was president this year.

Alkisiah

- Siley, Newman, Tomlinson, Axling, Schold, Nilson, Mueller, Hinckly, Nelson, Haugland, Schmidt, Richardson, Holm
- Hallgren, Evans, Rose, Klingemann, Burdett, Oie, Andrie, Hopper.
- McDonald, Monsen, Bowdish, Curtis, Pelegren, Hall, Gardner, Lammers, Black, Ek
- Chambers, Ullevig, Hartle, Hatch, Humphrey, Bean, Price, Armstrong, Southwick, Luccolini



W. A. A.

- Lund, Andrie, Schmidt, Weckwerth, Peterson, Wicklund, Vail
- Siemons, Rogers, Lambier, Oie, Price, Fisher, Iddins, Smith, Axling
- Knibbs, Moldrem, Kane, Lammers, Armstrong, Swisher, McNeil, Winship, Anderson.
- Lingbloom, Armstrong, Nilson, Dunning, Pierson, Jansen, Williams, Toler

- Made up of representatives from each club the Inter-club Council compiles the year's social calendar and nominates candidates for school elections . . . They sponsored a faculty chat, led by Harrison Brown, famed traveler and commentator . . . Mildred Fackler filled the position of president.

- Keeping housebooks in order is the biggest job of the presidents of the organized houses . . . Other officers are vice-president and social secretary . . . The halls frequently sponsor Women's League teas and rec hours . . . Some of the girls get housekeeping experience for future use while batching in an organized house.

I. C. C.

- Rolle, Tomco, Toms
- Moergeli, Peterson, Bean, Cummins, Fackler



Organized Houses

- Oie, Black, Bean, Klingemann, Tomlinson, Weckwerth
- Mills, Rowe, Andrie, Pickett

Dorm

- Holm, Howell, Kane
- Plummer, McClellan, McNamee



Blue Triangle

- Price, Oie, Weckwerth, Haugland, James, Martin, Baird, Aust, Hatch, Lund, Kane, Blair
- Holstad, Armstrong, Siemons, Peterson, Winship, Monson, Armstrong, Kennedy

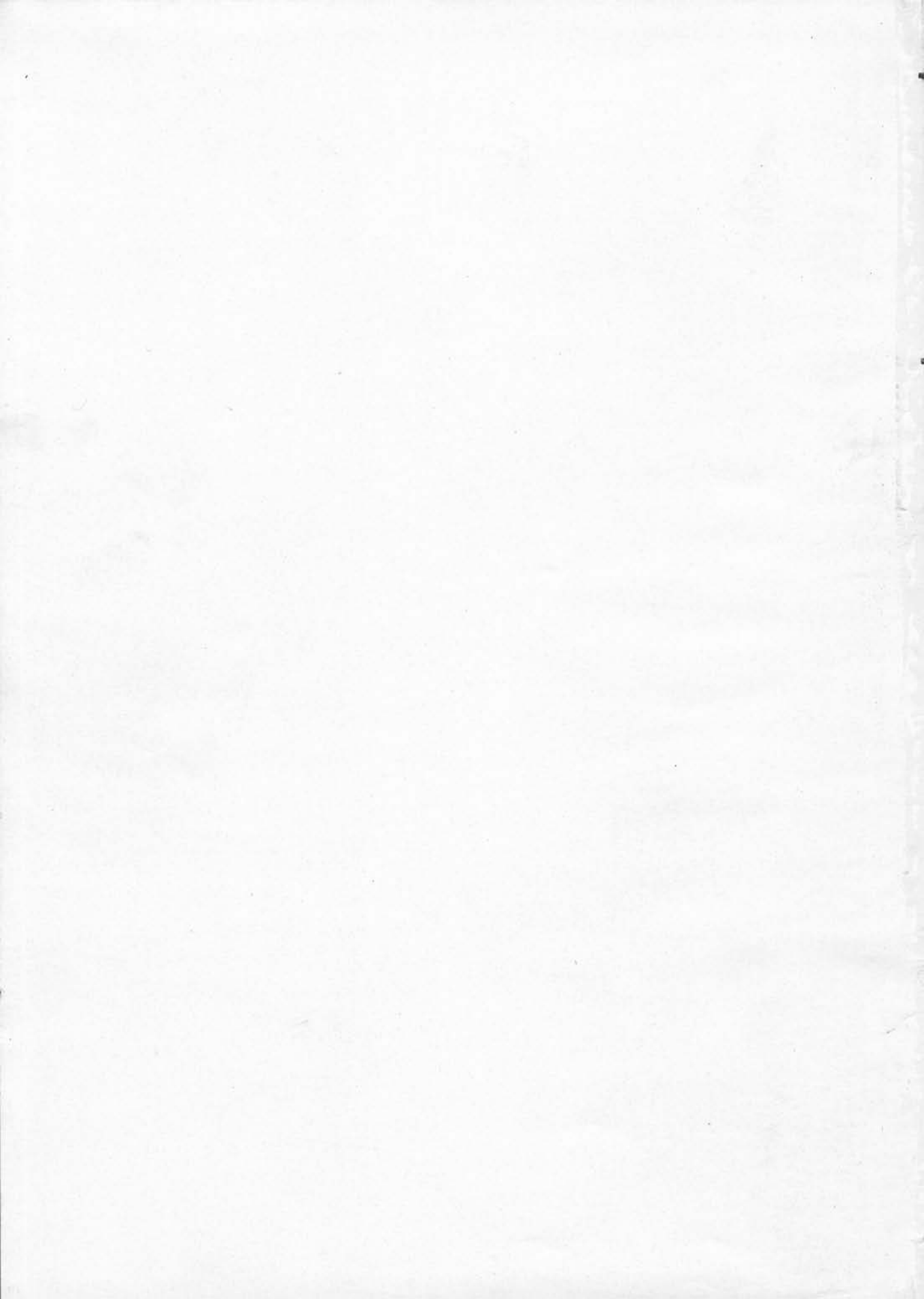
● The Blue Triangle club, famous for its presentation of comedy and western movies, was headed this past year by Dorothy Peterson . . . They raised enough money from their show to send nine delegates to the Seabeck summer conference . . . The Seabeck field secretary, Miss Stella Scurlock, visited the club during spring quarter.

● "The home of beauty and of light"—Edens Hall . . . Here the girls enjoy such things as quarterly informals, caroling, Wednesday evening sing-fests, and special breakfasts . . . A more serious note is in their Sunday afternoon, Christmas, and spring teas . . . Maureen McClellan has been their leader for 1936-37.



We wish to thank....

- WESTERN ENGRAVING COMPANY
FRED S. WIMAN
ALBERT P. SALISBURY
- UNION PRINTING COMPANY
C. S. BEARD
W. S. STANLEY
- SANDISON'S STUDIO
J. W. SANDISON
MISS SYLVIA CHRISTLE
- BABCOCK COVER COMPANY
SAM BABCOCK



L. A. Kibbe.

