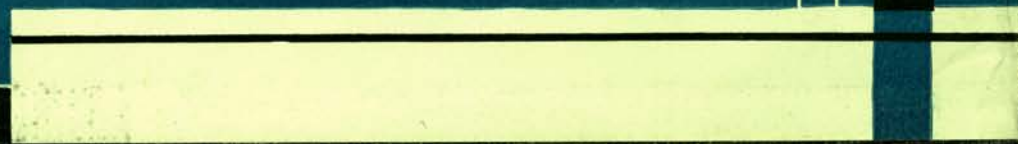


The
KLIPSUN
1938

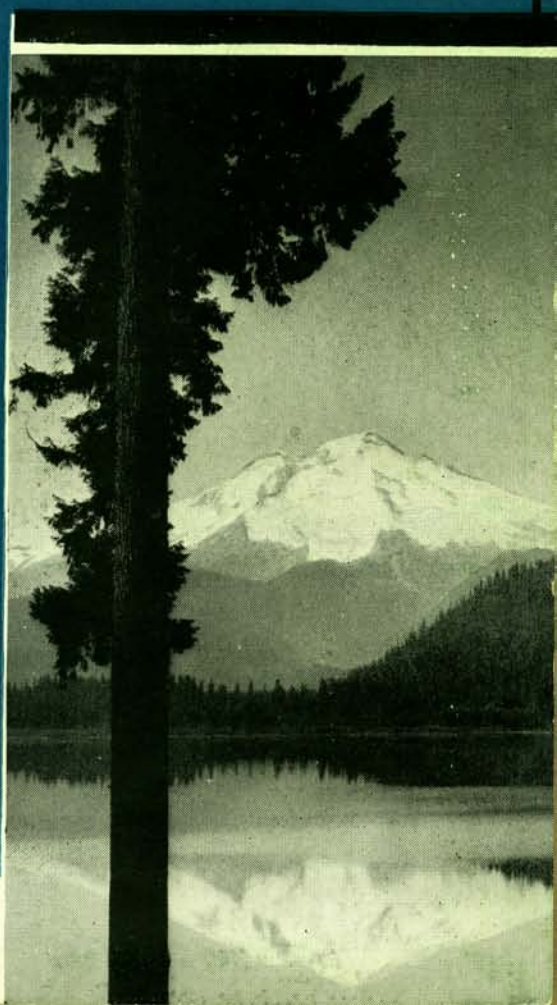
KLIPSUN



The KLIP



SUN 1938



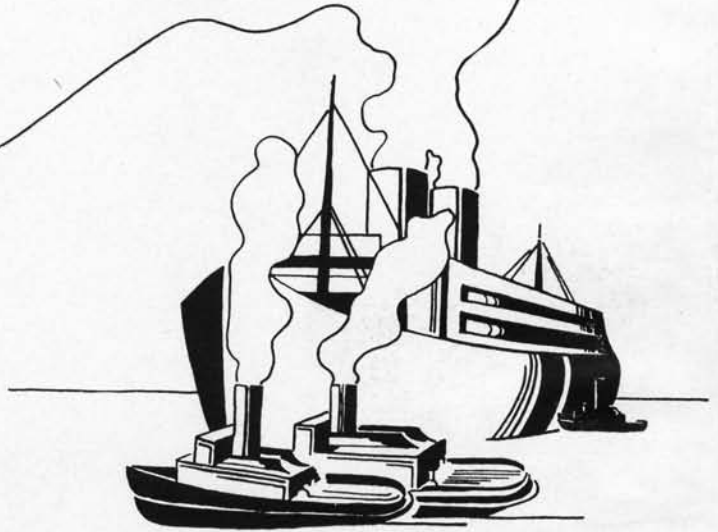
The
KLIPSUN
1938

L. A. Kibbe



ELEANOR REASONER, EDITOR
JANE TEMPLIN, ASST. EDITOR
BILL FOWLER, BUSINESS MGR.
FORREST HAWLEY, ART EDITOR

The
KLIPSUN
1938



Published by Associated Students at

WESTERN WASHINGTON COLLEGE OF EDUCATION

BELLINGHAM, WASHINGTON



MAD
of
Western Washington

L. A. Sibbe

KLIPSUN MAP

- ☆ spotlights your school
- ☆ another year . . . one to record in superlatives . . . a year whose charm of beauty and commerce has made it outstanding.
- ☆ getting in step with all of Washington in broadcasting the value of all that makes a back drop for our school . . .



Greetings...

TO THE PACIFIC NORTHWEST

Valleys, Parks and Ocean Beaches . . . Acre Ranches . . . Industry in all its Branches . . . Hunting, Fishing, River Trips . . . Fishing Craft and Stately Ships . . . Placid Lakes and Mountain Ridges . . . Canyons spanned by airy bridges . . . Farm and Logging-Camp and Mine . . . Spreading Leagues of Spruce and Pine . . . Lavish Crops of Field and Tree . . . Silver Harvests from the Sea . . . Cowboys, Broncs and Rodeos . . . Glaciers and Eternal Snows . . . Totems raised by vanished races, Sanctify the Silent Places . . . Atop the wealth of God's Green Land . . . We reign . . . our College . . . one supreme . . . in youth and dignity.



WESTERN WASHINGTON COLLEGE

BELLINGHAM, WASHINGTON

☆ *Mighty Shuksan, sister peak to Mt. Baker, attracts tourists and expert climbers alike by its mighty grandeur.*

☆ *The library . . . whose quiet beauty guards reflection and attracts admirers.*



☆ *contrary to the evidence . . . we are not crazy . . . merely in love with our setting . . . the sparkle of blue waters . . . the glistening of snow crowned peaks . . . sunlit campus . . . ivy covered walls . . . we had to talk . . . and the talk turned to a CHAMBER OF COMMERCE EDITION.*



*YOU . . . scene at WWC . . . baggage in
hand on your way up new steps . . . a future
in the molding . . . in and out of classes
. . . raising the football cheer . . . a stroll
down to a boat filled bay . . . gaiety the
rule at parties . . . the college, friend to
laughter, condoning and inspiring each ad-
venture . . .*

CONTENTS

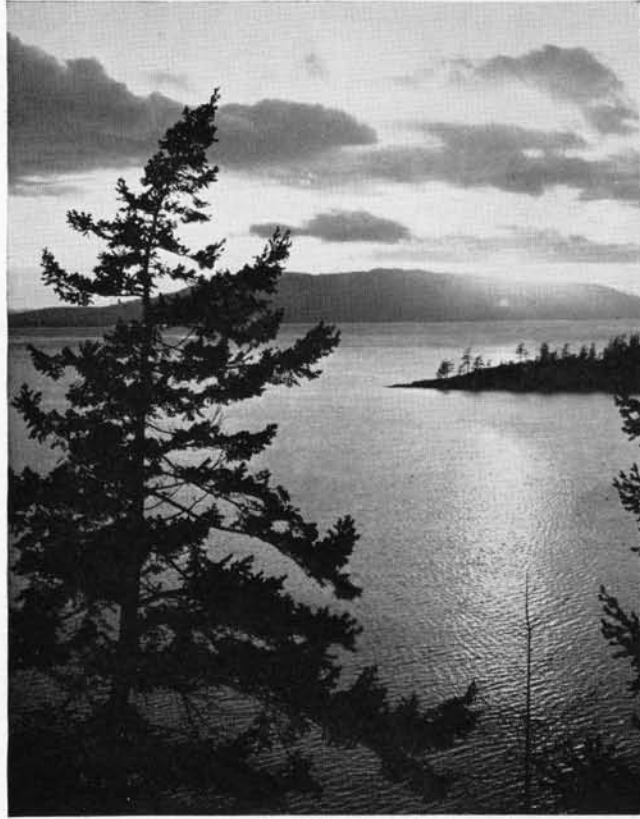
- ☆ ADMINISTRATION RIBS OF STEEL
- ☆ CLASSES THROUGH THE MILL
- ☆ ACTIVITIES SOCIAL WHIRL
- ☆ ORGANIZATIONS .. UNITED ELEMENTS
- ☆ SPORTS WILD LIFE

ADMINISTRATION

*shaping new policies . . . footprints in the
sands of time at W.W.C. . . . controlled co-
operations . . . character specialists . . . more
fun to know . . . hats off!*

☆ *A sunset among the islands of Chuckanut Bay. . . . There are 172 of these islands in the Puget Sound district to enjoy.*

☆ *President Fisher and Hjalmur Stefansson . . . two noted explorers . . . one of the Arctic . . . the other of education.*





C. H. FISHER
President
Western Washington College

Greetings . . .

The development of this College has been consistent with the growth of the Pacific Northwest. Ten years after the State of Washington was admitted to the Union, this College started its work with small beginnings and has expanded with the development of the country. The qualities which have characterized the College throughout its history are those which belong to the people of the Puget Sound region. According to geographers, this region has the physical conditions for making a fine civilization. Here if anywhere in the whole United States the people should enjoy a high type of civilization that is possible in a democratic society. Education is the foundation of such a goal. This College is devoted to furthering such a civilization in this region.

C. H. FISHER, President

REGISTRAR

In Dr. Kuder as registrar, we campus folk have found a faithful friend . . . a gallant comrade . . . a man whose well rounded interests portray themselves in action . . . Those who know him admire his friendly spirit . . . His most noted attribute is his scintillating smile and sparkling wit . . .



DEAN of WOMEN

Practical as she is smart . . . our Dean of Women, Miss Florence Johnson with an aura of friendliness and dignity . . . from early morning classes to midnight balls her effort toward harmony has won the admiration and friendship of all her school . . .

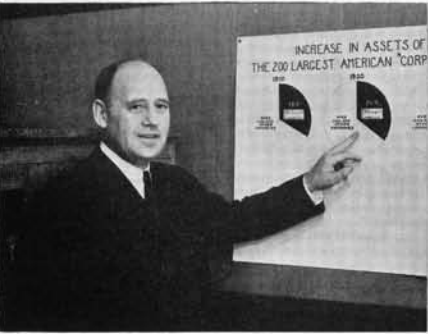


DEAN of MEN

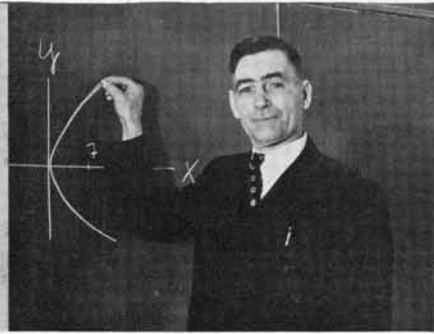
A veteran is W. J. Marquis, the good natured Dean of Men, young in spirits as any of the students he advises . . . His College Problems classes make this complex business of getting an education much easier . . . We're here and he's here . . . and we hope he stays a long time . . .



THE Fac



• **ARNTZEN, EDWARD J.**
Social Sciences
A. B., A. M., University of Washington
Graduate Student Columbia University



• **BOND, E. A.**
Mathematics
A. B., Pacific University
Ph. D., Teachers College, Columbia University



• **CEDERSTROM, MOYLE F.**
English
A. B., A. M., University of Minnesota
Ph. D., University of Washington



• **COTTON, JACK C.**
Director of Speech Clinic
Ph. D., Ohio State University, Columbus, Ohio



• **COUNTRYMAN, LINDA**
Home Economics
B. S., Milwaukee Downer College
A. M., Teachers College, Columbia



• **BURNET, RUTH A.**
News Writing
A. B., University of Washington



• **BUSHELL, DONALD G.**
Public School Music
A. B., A. M., University of Washington



• **CARVER, S. E.**
Physical Education
A. B., Stanford University
University of California
University of Iowa
Western Washington College of Education



• **BOOTH, MIRA E.**
Public School Music
A. B., University of Washington
A. M., Teachers College, Columbia University



• **BOSON, NILS**
Public School Music
B. Music Education, Northwestern University
New England Conservatory of Music, Columbia University



• **BREAKEY, HAZEL**
Art
B. S., Teachers College, Columbia University
School of Arts and Crafts, Berkeley, California

ulty



• **CUMMINS, NORA B.**
Social Science
A. B., Minnesota State University
A. M., Columbia University
Graduate Student, Columbia University



• **GARVIN, RUTHELEN**
School Nurse
B. S., University of Washington
R. N., Harborview Division, University of Washington



• **GRAGG, GEORGIA P.**
Penmanship
Western Washington College of Education
University
A. N., Palmer School of Penmanship



• **HICKS, ARTHUR C.**
English
A. B., A. M., University of Oregon
Ph. D., Stanford University



• **HOPPE, VICTOR H.**
Speech
Curry School of Expression
A. M., Northwestern University
University of Chicago
University of Michigan



• **HOPPER, ELIZABETH M.**
Secretary, Appointment Bureau
A. B., Smith College
A. M., University of California



• **HUNT, THOMAS F.**
Social Science
A. B., University of Minnesota
A. M., Clark University
University of Chicago



• **JOHNSON, FLORENCE E.**
Science
B. S., University of Washington
A. M., Mills College



• **KANGLEY, LUCY**
English
A. B., A. M., University of Washington
Graduate Student, Columbia University
Ph. D., Teachers College, Columbia University



• **KIBBE, LYNUS A.**
Education
B. S., Linfield College
A. B., A. M., University of Washington
A. M. Columbia University
University of Chicago
Western Washington College of Education



• **LANPHERE, WILLIAM**
Science
Ph. D., University of Washington



• **LAPPENBUSCH, CHAS. F.**
Physical Education
B. S., University of Washington



• **LONGLEY, GERTRUDE**
Home Economics
B. S., A. M., Teachers College, Columbia
University
University of Chicago



• **LOVEGREN, MAY G.**
Typewriting and Office Practice
Vashon College
Washington State College and W. S. C. at
Kalamazoo, Michigan



• **LUSTERMANN, PAUL**
Band and Orchestral Instruments
Royal Conservatory, Leipzig, Germany



• **MARQUIS, W. J.**
Education
A. B., A. M., University of Washington



• **McGEE, L. A.**
Health and Physical Education
B. S., University of Washington
A. M., Columbia University



• **MEAD, MAY, R. N.**
Nurse
Northwestern Sanitarium, Port Townsend,
Washington
University of Washington



• **MILLER, IRVING E.**
Education
A. B., University of Rochester
A. M., Ph. D., University of Chicago



• **OSSINGER, MARY**
Science
B. S., University of Washington School of
Nursing
Certificate of Public Health, University of
Washington



• **PHILIPPI, H. C.**
Science
B. S., A. M., University of Missouri
University of Washington
University of Chicago



• **PLYMPTON, HAZEL**
Art
Ph. B., University of Chicago
A. M., Teachers College, Columbia
University



• **RICHARDSON, CHARLOTTE B.**
Industrial Arts
B. S., A. M., Teachers College, Columbia
University



• **RUCKMICK, HERBERT G.**
Industrial Arts
B. S., A. M., Teachers College, Columbia University



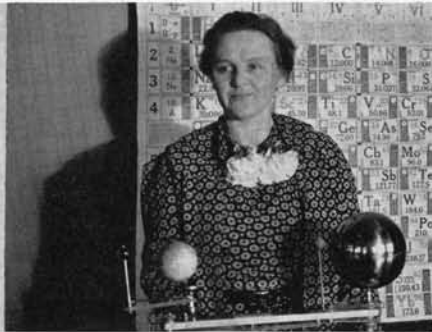
• **RUPERT, EVELYN**
Physical Education
B. S., M. A., Ohio State University



• **SNOW, MIRIAM B.**
Librarian, Children's Literature
A. B., New York State Teachers College
B. S., M. S., School of Library Service
A. M., Teachers College, Columbia Univ.



• **STRANGE, EDITH R.**
Piano
Grad. Whitworth Conservatory, Tacoma, Wash., Oberlin College, Cornish School Chautauqua, New York



• **SUNDQUIST, LEONA**
Science
A. B., M. S., University of Washington
Graduate Student, Columbia University



• **ULLIN, ANNA**
Foreign Languages
A. B., University of Washington
A. M., Teachers College, Columbia University



• **UPSHALL, C. C.**
Research and Education
A. B., University of British Columbia
Ph. D., Teachers College, Columbia University



• **WEYTHMAN, RUTH**
Health and Physical Education
B. S., University of Washington
A. M., Teachers College, Columbia University, University of California



• **WIIK, NAN DYBDAHL**
Voice
A. B., University of Norway
Studied in Oslo, Norway, Milan, Italy, Paris and Berlin



• **WILLIAMS, JOHN R.**
Violin — University of Michigan
American Conservatory of Music, Chicago
University of California



• **WILSON, MABEL ZOE**
Librarian
A. B., Ohio University
B. L. S., New York Library School



• **WILSON, R. D.**
Printing
I. T. U. School of Printing, Indianapolis
Practical Experience in Printing

Campus Elementary School



• **BARRETT, ROSAMOND**
Secretary to the Director of Training
School



• **CASANOVA, KATHERINE M.**
Campus School, First Grade
B. S., A. M., Columbia University
San Jose, California State Teachers College



• **CRAWFORD, BERTHA**
Campus School, Eighth Grade
B. S., Teachers College, Columbia
University
University of Washington
Western Washington College of Education



• **DAWSON, MARJORIE E.**
Primary Supervisor in City Schools
B. S., A. M., Teachers College, Columbia
University



• **ELLIOTT, IRENE M.**
Campus School, Second Grade
B. S., A. M., Teachers College, Columbia
University



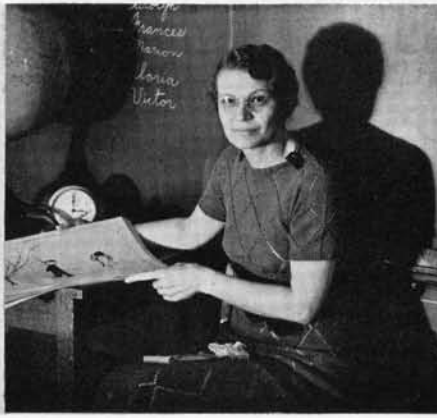
• **ERICKSON, EMMA E.**
Technique of Teaching
B. S., A. M., University of Minnesota
State Teachers College, Moorhead,
Minnesota



• **GRIM, PAUL R.**
Campus School, Ninth Grade
B. S., A. M., Ohio State University



• **KINSMAN, PRISCILLA M.**
Campus School, Third Grade
Ph. B., Education, University of Chicago
A. M., Teachers College, Columbia University



• **MERRIMAN, PEARL**
Campus School, Fourth Grade
A. B., A. M., State Teachers College,
Greeley, Colorado
Graduate Student, Teachers College,
Columbia University



• **NICOL, SYNVA K.**
Campus School, Pre-Primary
A. B., Fresno State Teachers College
A. M., Teachers College, Columbia University



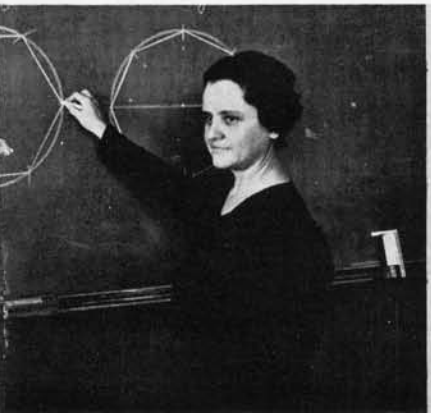
• **ODOM, EVELYN**
Campus School, Fifth Grade
A. B., Winthrop College
A. M., Teachers College, Columbia University



• **RICH, MARY E.**
Director of Training School
B. S., A. M., Teachers College, Columbia University



• **TRENT, E. WILMA**
Supervisor in City Schools
A. B., A. M., University of Iowa
University California, University of Chicago



• **VAN PELT, RUTH**
Campus School, Seventh Grade
A. B., University of California
A. M., Teachers College, Columbia University



• **WENDLING, ELSIE**
Supervisor in City Schools, Junior High School
B. S., A. M., Teachers College, Columbia University
Graduate Work, University of Wisconsin



• **WILLIAMS, MARY LOUISE**
Campus School, Sixth Grade
B. E., Milwaukee State Teachers College
A. M., Teachers College, Columbia University



BESSIE BECKWELL
Secretary to the Registrar



SAM BUCHANAN
Financial Secretary



MYRTLE C. BURNHAM
Recorder



ETHEL CHURCH
Secretary to the President



WILHELMINE DOCHERTY
Assistant in the Appointment
Bureau



CHARLOTTE HOOD
Secretary to Research Bureau



LYN HUGHES
Assistant to Business Office



MARGARET McKINNON
Accountant



MILDRED E. TREMAIN
Secretary to Dean of Women

ORLENA YOUNG (no picture)
Assistant to Registrar's Office

Strictly Confidential 

AT EASE ▲

The faculty at ease . . . Wednesday nite play hours . . . The Club Lido . . . the peppy party that brought laughs that echoed on the campus for a week . . . Afternoon teas with our profs holding the floor . . . Personalities . . . Ruckmick is a photography enthusiast . . . in classes and out of class . . . An automobile takes Miss Rich's spare time . . . "going someplace"? . . . Everyone has followed Dr. Bond on a hike someplace . . . Kibbe's tramps are traditional . . . Lanphere hobbies in flowers . . . Following wayside trails Miss Hopper rides horseback . . . Paddling her own canoe is Muss Ullin's favorite pastime . . . A cribbage board . . . or a set of golf clubs never fail to make Coach Carver's leisure time happy time . . . A fishing we will go with Mr. Arntzen . . . All of them, the core of WWC's charm.

Sundquist on field trip, "chocolates" Burnam, Kenji Ito covers W.W.C., Miss Rich and hobby, "Doc" Bond, Miss Ullin prepares for Club Lido



CLASSES

counter attractions . . . good time . . . preparing for success . . . in the race . . . made for the many . . . indispensable investments . . . take your choice

☆ *Beautiful scenic Chuckanut Drive . . . its changing moods an attraction to tourists . . . its bay, a haven for yachts.*

☆ *To and from classes . . . carefree youth . . . in their stride toward the more complicated "three R's."*



Original minded leaders . . . they majored in ingenuity . . . with results . . . immeasurable energy toward the new and intellectual . . . luncheon with Luther King, negro miracle in tonal beauty . . . novelty and intrigue at Cupid's Hop . . . dancing and romancing . . . a sweetheart's paradise . . . with accent on youth . . . the barn dance, a country cacaphony in an agricultural atmosphere . . . featuring farmers, hoedown and the merry mix-up of a square dance . . . now they're grads . . . with a background of intelligence, personality and wisdom that shall make them able to handle the problems of life as they have those of college . . . the best of our wishes go with them . . . so, 'til we meet . . . at Homecoming . . . GOOD LUCK!

SENIOR OFFICERS

BOND Advisor
LANGE Secretary-Treasurer
HOWELL Vice-President
VANDER GRIEND President



JUNIORS - SENIORS

AHRE, PEARL S. . Lignite, North Dakota

ALLINSON, FERN . Bellingham . . . W. A. A.
Treasurer '37

AMES, WILLIAM A. . Buckley . . . Sophomore Class
President '35 . Football '34, '35, '36

ANDERSON, LILLIAN M. . Petersburg, Alaska . . .
W. A. A.

ANDERSON, MYRTLE I. . Mukilteo . . . W. A. A.
. . . Blue Triangle

APLING, ESTELLA S. . Camas

BAIRD, HELEN . Des Moines . . . Scholarship Society
. Vanadis Bragi

BARTH, FRANCES L. . Kirkland . . . W. A. A. .
Scepter and Shield

BELL, MRS. ETHEL . Everett

BENNINGTON, RUTH . Everett . . . Valkyrie Club
. Women's League . Winter Informal General
Chairman '38

BERG, ANNA . Kirkland . . . W. A. A. . Scepter and
Shield

BLANDAU, ELSIE . Puyallup . . . Y. W. C. A. Vice-
President '38 . Blue Triangle Commission Repres-
entative

BOAL, VIRGIE . Bellingham . . . Board of Control .
Women's League Vice-President '38

BORGSTEDT, JEANNE . Everett . . . Edens Hall Social
Chairman '37 . Women's League Commission Pub-
licity Chairman

BOWDISH, BETTY ANNE . Bellingham . . . Alkisiah
Treasurer '36, '37 . Western Viking Feature
Editor '37

BRYSON, LOUISE . Sedro-Woolley . . . Alkisiah

CAMPBELL, EVAN . Bellingham

CARLYLE, HELEN . Carnation . . . Blue Triangle
Treasurer '37 . Western Viking Special Writer



JUNIORS - SENIORS



CHAMBERS, BERNICE . Bellingham

CHRISTY, CATHERINE . Bellingham

CLIBON, UNA . Walla Walla . . . Scholarship Society
. International Relations Club Secretary



COLLEN, ELEANORE . Tacoma

COOK, TERRY . Sedro-Woolley . . . Track '36

COPPER, CHET . Bellingham



CRANDELL, RACHEL . Seattle . . . Women's League
General Chairman . Esquire Informal '37

CUNNINGHAM, CLARA E. . Puyallup . . . Alkisiah
President '38 . Blue Triangle

CURTIS, THELMA LUCILLE . Buckley . . . Alkisiah



DAVIES, BETSY . Aberdeen . . . Western Viking Staff
. W. A. A.

DAVIS, HELEN MAY . Buckley . . . Y. W. C. A.
President '37 . Inter-Club Council Corresponding
Secretary

DAVIS, JEANITA . Sedro-Woolley . . . Blue Triangle .
Orchestra '36, '37, '38



DEACON, MARIE . Seattle

DENTON, MARY . Mount Vernon

DOLAN, JOE . Bellingham . . . Klipsun Business
Manager '36 . Boxing



DOMBROSKI, CHESTER R. . Aberdeen . . . "W" Club
President '38 . Varsity Basketball '36, '37, '38 .
Baseball '35, '36

EBRIGHT, JANE . Seattle . . . Transfer U. of W.

ECKERT, EARL W. . Puyallup . . . Western Viking
Business Manager '37 . Band and Orchestra

JUNIORS - SENIORS

EGELAND, JUANITA M. . Friday Harbor . . . Blue Triangle . W. A. A.

EK, CARMEN . Issaquah . . . International Relations Club Secretary '37 . Alkisiah

ELLIOTT, ELEANORE CLAIRE . Winlock . . . W. A. A. . Badminton



ELLIS, CLARINDA P. . Bellingham . . . Y. W. C. A.

ENGBRETSSEN, JOHN . Granite Falls . . . International Relations Club

EVANS, THOMAS H. . Chehalis . . . "Personal Appearance" cast . Klipsun Staff



FACKLER, MILDRED . Bellingham . . . Inter-Club Council President '37 . International Relations Club President '37

FLAJOLE, MARY . Seattle . . . W. A. A. . Edens Hall Chairman . Homecoming Window Display '37

FORBES, JOYCE . Juanita . . . W. A. A. Vice-President '38 . Blue Barnacles President '38



FORSTER, E. VONDA . Lebanon, Oregon . . . W. A. A. . Blue Triangle

FRAZIER, EVELYN . Bellingham

FRIZZELL, MERRITT L. . Granite Falls . . . International Relations Club Vice-President '38 . International Relations Club Delegate '38



GARDNER, MARY I. . Seattle . . . Alkisiah . W. A. A.

GIBERSON, MILDRED . Ridgefield . . . Y. W. C. A.

GILFILEN, VELNA M. . Bellingham



GLEASON, VIRGINIA . Seattle

GREEN, PATRICIA L. . Seattle . . . Scholarship Society President '38 . Klipsun Hop Chairman '38

GREER, MARGARET R. . Aberdeen . . . W. A. A. . Valkyrie Club



JUNIORS - SENIORS



GRIER, BETH M. . Mount Vernon . . . W. A. A. .
Blue Triangle

HALLGREN, RUTH . Fallon, Nevada . . . Alkisiah

HANKAMP, LOIS A. . Lynden . . . W. A. A.



HANSEN, JAMES E. . Ferndale

HARDIN, JACK H. . Lynden

HATCH, JEAN . Bellevue . . . Women's League
Treasurer '38 . Western Viking Art Editor



HATCH KATHERYN . Bellevue . . . Scholarship Society
. "Julius Caesar cast . 'Much Ado About Nothing"
cast

HAWLEY, FORREST . Lynden . . . Klipsun Art Editor
'38 . Western Viking Art Editor '37

HEATON, AGNES . Winthrop . . . Alkisiah . Badminton



HICKLIN, MYRA . Mabton . . . W. A. A. . Blue
Triangle

HINCHLIFFE, SYBIL . Hoquiam . . . Western Viking
Editor . Klipsun Staff Writer '38

HOAG, GILBERT . Mount Vernon . . . "Julius Caesar"
cast



HOLM, ELLEN A. . South Bend . . . W. A. A. . Downs'
Hall House President '37

HOLSTAD, NELLIE . Everett . . . Blue Triangle Sec-
retary '37, '38 . Vanadis Bragi

HOLZHEIMER, ERMAN . Custer . . . Football '35,
'36, '37 . "W" Club



HOSTETTER, HELEN MAE . Bellingham . . . Klipsun
Editor '36 . Western Viking Society Editor

HOWELL, BETTY MARIE . Snohomish . . . Edens
Hall President '38 . Junior-Senior Class Vice-
President '38

HOXSIE, FRANCIS . Camas

JUNIORS - SENIORS

HUDSON, RICHARD L. . Redmond . . . Band '37, '38
. Track '37, '38

HUGHES, MARY . Seward, Alaska

HUNT, LESLIE . Portland, Oregon . . . Scholarship
Society



HUMPHREY, EVELYN . Renton . . . Alkisiah

IRVIN, THOMAS P. . Willapa . . . Barton's House
President '38

IVERSON, ARTHUR . Olalla . . . "W" Club



IYALL, MARY . Olympia . . . W. A. A. . Alkisiah

JACOBSEN, EDWARD ROBERT . Aberdeen . . . Tri-
Normal Golf Champion . Viking Manor Vice-Pres-
ident

JAMES, ALICE W. . Granite Falls . . . Women's League
Commission '37 . Orchestra



JANSEN, JOYCE . . . W. A. A. . Women's Sports

JOHNSON, LOUISE . Bellingham

JOHNSON, PAULINE . Bellingham . . . W. A. A.



KELLY, EDNA . Bellingham . . . Western Viking
Staff Writer

KERSH, LUELLA . Bellingham

KINK, MARY R. . Bellingham . . . Women's League
Commission '37 . Junior-Senior Class Party Chair-
man



KIRK, RUTH . Bellingham . . . Music

KNIBBS, MARY . Bellingham . . . W. A. A. . Alkisiah

KREITER, WINIFRED . Bellingham . . . Orchestra .
"Much Ado About Nothing" cast



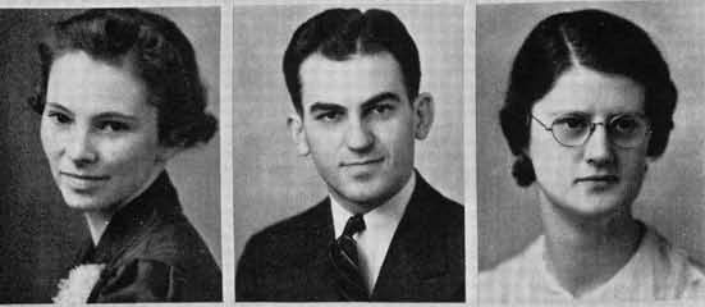
JUNIORS - SENIORS



LAMMERS, LOUISE . Mount Vernon . . . Alkisiah .
W. A. A.

LANGE, LEO A. . Port Townsend . . . Transfer W. S. C.
. Football '37 . "W" Club Secretary '37

LARSON, HARTMAN . Arlington



LEE, LUCILLE . Bellingham . . . Klipsun Assistant
Editor '37 . Western Viking Staff . Valkyrie

LEIDLE, VERN V. . Herreid, S. Dakota . . . "Personal
Appearance" cast . "Julius Caesar" cast . Intra-
mural Basketball

LITTLE, MARION W. . Nooksack . . . Y. W. C. A.



LITTLE, WILBERT L. . Seattle . . . International
Relations Club

LUNDQUIST, HELEN L. . Bay Center . . . W. A. A. .
Blue Triangle

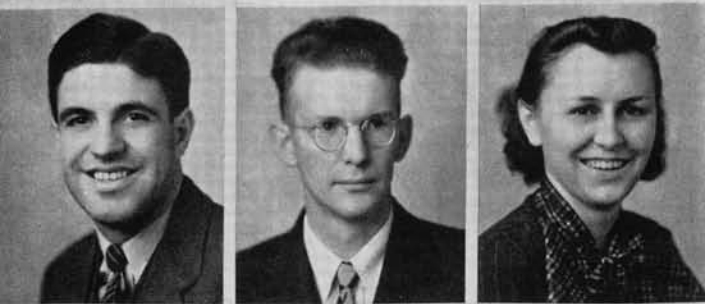
MARRIOTT, VIRGINIA . Mount Vernon . . . Edens
Hall Social Chairman '38



McABEE, LOUISE . Port Angeles

McCABE, MAE B. . Seattle . . . W. A. A. . Blue
Barnacles

McCLELLAND, MAVIS ELIZABETH . Seattle . . .
W. A. A. . Alkisiah



McGLINN, JIM W. . Bellingham

McINNES, JOHN . Bellingham

McLEOD, RUTH . Erie, North Dakota . . . Blue
Triangle . W. A. A.



McNEE, JOSEPHINE . Snohomish . . . Western Viking
Advertising Manager '37

MEHUS, VIOLA . Bellingham . . . Transfer W. S. C. '37
. W. A. A.

MELLUM, HANNAH . Ulen, Minnesota

JUNIORS - SENIORS

MEREDITH, CHARLES . Seattle

MICKEL, NANCY F. . Centralia . . . Transfer Florida Southern College . Music

MILLER, MARGARET . Bellingham



MOE, PETER . Stanwood

MOLDREM, MAXINE . Bellingham . . . Goddess of Thanksgiving Festival . Women's League President '38

MONSEN, LORRAINE . Everson . Alkisiah



MUNCH, MARGARET . Sumner

NEIL, RALPH . Edmonds . . . Board of Control . Campus Day Chairman '37

NILSON, VERA . Portlock, Alaska . . . Alkisiah . W. A. A.



NELSON, ELIZABETH . Tacoma . . . Alkisiah . W. A. A.

NELSON, HAROLD . Edmonds . . . Basketball Captain '38 . Homecoming Chairman '38

NELSON, MAURICE . Bellingham . . . Dramatics Assistant Director '37 . Football . Baseball . Track Manager '37



NIMS, FRANK . Sumas

NOBLE, FERN . Vancouver

OLSEN, MARGIT . Bellingham . . . W. A. A.



ORR, MARY E. . Custer

OSTERBERG, DAVID E. . Farwell, Minn. . . . International Relations Club

OXFORD, ECHO . Ferndale . . . Valkyrie Club . Cupid's Hop Chairman '38



JUNIORS - SENIORS



PATTERSON, GLADYS . Carnation . . . Blue Triangle
Downs' Hall House President '37

PELEGREN, FRANCES . Bellingham . . . Alkisiah .
Western Viking Staff

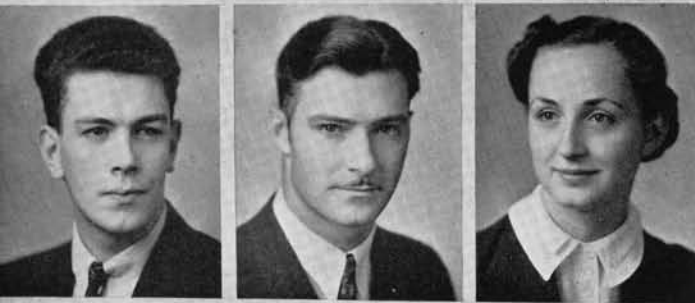
PETERSON, IMOGENE . Bellingham



PETERSON, SHARLEE . Ocean Park

PICKETT, NINA MAE . Mount Vernon . . . Inter-
national Relations Club President '38 . Inter-Club
Council Secretary '38

POPOVIC, MILES . Seattle . . . Football '36, '37, '38



PORTER, ED . Raymond . . . Homecoming Dance
Chairman '37 . Intra-mural Basketball

POTTER, ALVA O. . Adams, Oregon . . . "Much Ado
About Nothing" cast . "Julius Caesar" cast

PULVER, MARTHA LOU . Aberdeen . . . Valkyrie Club
President '38 . Women's League Social Chairman '37



RAYMOND, BARBARA . Tacoma

REASONER, ELEANOR M. . Bellingham . . . Klipsun
Editor '38 . Valkyrie Club

REIS, CLAUDE . Sedro-Woolley



RICH, BETTY . Seattle

RICHARDS, ORVILLE . Bellingham

ROWE, MERNA . Shelton . . . W. A. A.



RUPP, HALLIE LOU . Centralia . . . W. A. A.

SANDERS, WINSTON . Edmonds . . . Intra-mural
Basketball

SIEBEL, MARIBETH . Port Angeles

JUNIORS - SENIORS

SMITH, BERTHA M. . Lynden . . . W. A. A. . Volley-
ball Manager '38

SMITH, CATHERINE E. . Seattle . . . Valkyrie Club .
"Personal Appearance" Assistant Director '38

SMITH, ELEANOR . Goldendale



SOLOMON, JOHN W. . Seattle . . . "Julius Caesar"
cast . "Personal Appearance" cast . Chorus

SOUKUP, CLARENCE . Edmonds . . . Drama .
Western Viking Editor '38

SPENCER, JEAN . Bellingham . . . Transfer W. S. C.
'37 . W. A. A.



STEIBER, MERLE . Napa, California

STEPHENS, MARY A. . Bremerton . . . W. A. A. .
Choir

STEWART, ALBERTA . Centralia . . . Blue Triangle .
Choir



STODDARD, PAT . Everett . . . Western Viking
Staff . "Personal Appearance" cast

STREATER, MARION C. . Quinalt . . . W. A. A. .
Alkisiah

STROEBEL, MARIAN . Sedro-Woolley



SUMMERS, JEAN . Seattle . . . Vanadis Bragi
President '38

SWISHER, BETTY . Bellingham . . . W. A. A. Pres-
ident '38 . Inter-Club Council Vice-President

TARTE, DORIS . Custer



TESREAU, JEFF . Cosmopolis . . . Intra-mural Basket-
ball . Golf '37, '38

THOMAS, PHYLLIS . Rainier . . . W. A. A.

THOMPSON, LUCILLE . Bremerton



JUNIORS - SENIORS



TOLER, NADINE . Bellingham . . . W. A. A. . Blue Triangle

TOMLINSON, ELEANOR . Metlakatla, Alaska . . . Alkisiah Treasurer '38

TROBAUGH, MARY . Manson



TUCKER, MARY ESTHER . Burlington . . . Band . Orchestra

VANDER GRIEND, CLARA . Lynden . . . Junior-Senior Class President '38 . Board of Control '38

VESPER, HELEN . Seattle



VINJE, LILLIE ANN . Poulsbo . . . Y. W. C. A. Social Chairman

VOGEL, KATHLYN . Walla Walla . . . Transfer Whitman College '37

VON PRESENTIN , CAROLINE . Sedro-Woolley . . . W. A. A.



WANLESS, JUNE M. . Vancouver . . . W. A. A.

WARD, MARY . Bellingham

WHEELER, FRANCES M. . Paradise, California . . . Scepter and Chield



WHITE, ROBERT . Seattle . . . Board of Control '38 . Scholarship Society

WICKLUND, ELEANOR . Issaquah . . . W. A. A.

WILSON, DON . Rosburg . . . A. S. W. W. C. President '38 . "Much Ado About Nothing" cast



WILSON, LOIS . Seattle

WITHEROW, FLOYD . Forks

ZYLSTRA ,DONALD L . Lynden . . . A. S. W. W. C. President '37 . "Much Ado About Nothing" cast

JUNIORS - SENIORS

BATEMAN, ANNE DECKER . Bellingham . . . Or-
chestra . W. A. A.

BURG, AGNES . Tacoma . . . Vanadis Bragi . Women's
Sports

CAVANOUGH, MILDRED B. . Burlington

FARNUM, FREDA A. . Bellingham

GRAHAM, FLOYD N. . Port Orchard

HALL, HELEN IRENE . The Dalles, Oregon . . .
Blue Triangle . Alkisiah . Oregon Normal Transfer

HENDRICKS, ETHEL LOIE . Mount Vernon . . . De-
bate . International Relations Club

HINCKLEY, LAURA FRANCES . Port Gamble

HUSTON, VELMA F. . Heppner, Oregon . . . W. A. A.

IRELAND, RUTH . Bellingham

HOVAN, LOREEN S. . Ferndale . . . Scholarship
Society

KINNEAR, LILLIAN WINSHIP . Bellingham . . . Music

LOWRY, DEBBIE . Thompson Falls, Montana

McCONNELL, ROBERT J. . Snohomish . . . Inter-
national Relations Club . Orchestra

MENDENHALL, LOIS . Buffalo, S. D. . . . Blue
Triangle . W. A. A.

MILES, LAURA M. . Bellingham

MORRIS, HOMER . Portage . . . Football '37, '38 .
Drama

PETERSON, MRS. EVELYN . Spokane . . . Vanadis
Bragi

PORTER, DOROTHY L. . Oakville

ROSS, ETHEL S. . Anchorage, Alaska . . . Scholarship
Society President '37 . Vanadis Bragi Treasurer '36

SCHOLD, MARGARET . Silverdale . . . Women's
League Commission '38 . High School Girl's Con-
ference Chairman '38

STEWART, AVIS J. . Woodland . . . Alkisiah

THORSTAD, BLANCHE . Drummon, Idaho . . . Choir

WILLIAMS, SYLVIA M. . Tacoma . . . Vanadis Bragi
Vice-President '38

No longer freshmen . . . with impetuous ideals . . . but Sophomores . . . whose feet are well set on the way to certificates and caps and gowns . . . They matured and with added assurance and confidence . . . accented modern college life . . . with its infinite detail . . . the varied and satisfying social appeal, a spot for culmination of intellectual ideals, a prophylactic against boredom . . . Progress and production . . . ardent, contagious football enthusiasm, the success of Phyllis McNamee's able planning, staged at the WWC-WSC Freshman fiesta and rally . . . Designed for fun and laughter with the dance-minded, the Soph's presented Kenny Selander and the Cherry Bowl Ball . . . appropriately honoring George Washington . . . and cherries . . . Intellectual hosts to other students and faculty of the college when Frank Davidson, lectured on "Shrines in England" . . . Helen Masters, the Soph's personable secre-

SOPHOMORE OFFICERS

- HIGGINBOTTOM President
- CARVER Vice-President
- MASTERS Secretary-Treasurer
- CEDERSTROM (no picture) Advisor





Top row—Carlson, Hawley, Barker
 Gooding, Kidder, Courtney, Ellis
 Chappel, Allison, P. Barnes, V. Anderson, Cowles, Bays
 Bundt, Elstad, Dickinson, Clarke, Allbaugh
 Braithwaite, Armstrong, Bjerstedt, Beatty, Adams, F. Blandeau
 Dunning, Aust, Baldwin, Bolshannon, Dorcy

Top row—James, Hoag, Howatt, Harvey, Barker
 Jackson, D. Fowler, Fowler, Hale, Gooding
 Finkbonner, B. Hall, Grimes, Gookins, Holdsworth
 Gibbs, A. Johnson, Fisher, Gerard, Hatch

Top row—Barr, Laube, Molenkamp, Richardson
 Neuerburg, Pierce, Oberleitner, R. Martinson, Merrell
 Masters, Page, Rosenzweig, D. Peterson
 Mullen, Nygard, Mahan, Rittenberg, McNamee

Top row—Wheeler, Sarles, Weber, Voorhies
 Stevenson, Russell, Trotter, Valenta, Shay, A. Peterson
 Willett, Whitcombe, Wainio, Williams, Tamm
 Tveten, Watson, Slagle, Schwartz, Sonneland
 Winship, Weston, Shirk, B. Wilson, Tiplin, Townsend

tary-treasurer acted as manager . . . The May Basket Brawl . . . the last party of the year . . . and new success done in dedication to Springtime . . . originated by Arlene Dickinson, chairman . . . swingers danced to the strains of Jay Curtis' orchestra . . . Interclub Council had an active member in the person of Leslie Higginbottom . . . this year's prexy . . . who was the stimulus behind many an activity . . . Important because of their individuality of thought . . . prominence in all-around activities . . . they knew what to do . . . when to do it . . . and how.

New to college life . . . humorous and youthful yet not fantastic . . . the air of youth, grace, and charm . . . they covered comfortable mileage . . . their savage yet futile defense of the Homecoming bonfire presented their heroes to the hospital . . . the others rallied with overwhelming enthusiasm promoting a bigger and better blaze . . . mid-quarter they danced at the Freshman Ball . . . staged in Blue and White in tune with all the latest they exemplified the versatility of WWC . . . President Mike Zylstra led the way . . . Dr. Hicks held the reins.

Top row—Bever, Backer, Alvord, F. Anderson
Alberg, Bowman, Bailey, Barr, Asmundson
Barto, Bennett, Boone, Burnham, Bolster
Bruce, Andrie, Berg, M. Barnes, Aboitiz
Bowdish, Barci, Asplund, Blythe, B. Boothe
Binkie, Bainard, Allen, Ambrose, Anderson
Boyer, M. Humphrey, L. Baker

Top row—Fixx, Goheen
Hansey, B. Fowler, Germain, Glud, Gerry
Hammer, Gahr, Gepner, Hohansen, Furness
Hamilton, Harris, Hart, Gildersleeve, Hensell
J. Hill, Fry, Greene, Herrold, Gunderson
E. Heaton, Gustafson, E. Hall, Genter

Top row—Denton, R. Dolan, Carter, Ferris, Cormier
Curry, Evans, Deeter, Cooper, Dorcy
Fussell, Ferguson, Dean, Cribb, Collings, K. Dunn
Dopp, Erickson, F. Caldwell, Cook, Clancy
Engman, Cole, DeBurgh, Call, Eaton
Engelson, Cory, Carver, Clarke, Fegley

Top row—Kirlow, Huter, Holbrook
H. Jacobsen, Klein, Husfloen, Lapinski, R. Jacobsen, Larsen, Miller
Linden, Johnson, Hunter, Lucid, Kinsey, Johnson, Julius, G. Johnson
Fredrickson, Lindstrom, P. Jenkins, Kley, Lynch, Lobe
M. Johnson, M. Jones, Jones, Krause, Johnson, Kuljis
Kaufman, V. Jenkins, Holtzheimer, A. Johnson, T. Kent





Top row—Krueger, Nix, Nelson, Stinnette, Hogberg
Kennedy, Osman, E. Moses, Landon, McGee, J. Moses, Mollan
Nubgarad, J. Olson, McGregor, L. Olsen, Mayer, Munson
Rensing, Meenk, Norton, Martin, O. Martinson, Oberg
Meyer, Nelson, McSherry, V. Moxley, Morgan, Newell
McElhoe, Noonan, Nielsen, McKenzie, MacDonald, Megard
Minich Monteith, D. Moxley, Nicholls, Nickel, Meins

Top row—Martin, Reed, Runnels, Rosentangle, Peterson
Thorsted, Rapp, Rogers, Ridder, Paul
Perry, Salo, Shannon, Peasley, Shuman
Props, Peterson, Pierron, Parberry, Shrum
Purnell, Reid, Schaus, Simukka, Patmore

Top row—Strom, Sorenson, Stover
Tougaw, Tibbles, Sullivan, Thorpe
Schumann, Talenga, Smith, Tasoni
Stevens, Van Etten, Titus, Tudor
G. Templin, Shields, Trickey, Teichroew, J. Templin
L. Stoddard, Rillman, A. Smith, Squire, Spangler

Top row—Vogel, Zylstra, Winters
Van Nostran, Vasilatos, Southern, Waldroop
Sperry, Willison, Vallentgoed, P. Vandergriend, Washburn
B. Wilson, Vilwock, Wollan, Whitworth, Wilson

FRESHMEN

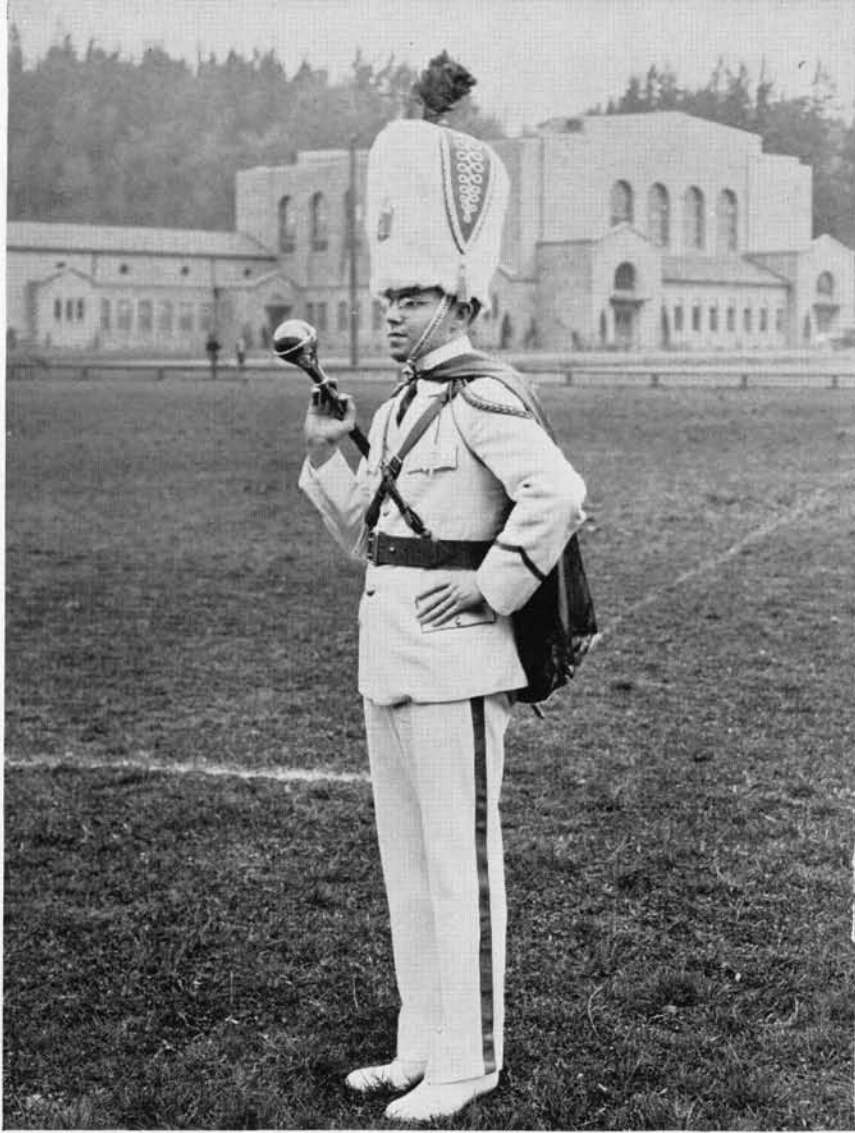
FRESHMAN OFFICERS

- M. ZYLSTRA (no picture) President
- HILL Vice-President
- NOONAN Secretary-Treasurer
- HICKS (no picture) Advisor



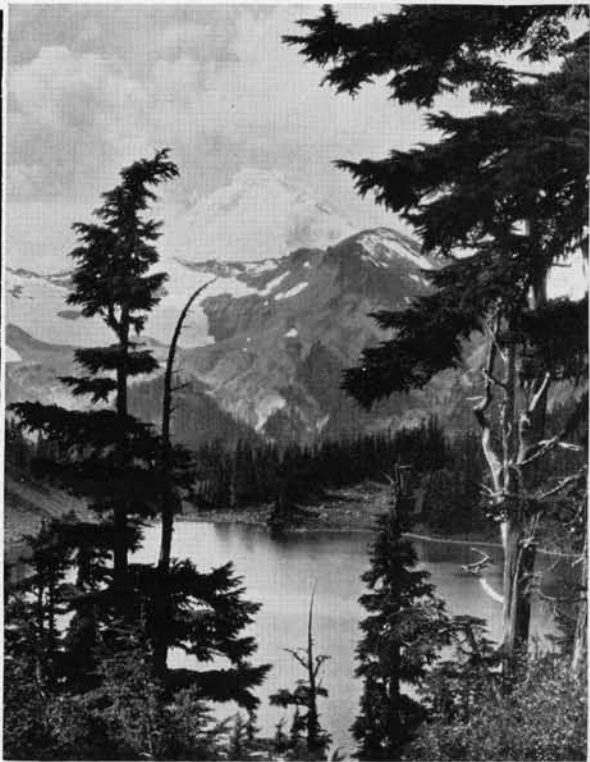
ACTIVITIES

*collection caviar . . . music in the uniformed
manner . . . twilight trekking . . . dramatic
delights . . . splash of color . . . evening
elegance . . . night flares*



☆ *Marching major . . . the year's great addition to school pride.*

☆ *Magnificent Mt. Baker . . . "The Great White Watcher," worshipped by the Indians, is "tops" among ski fans and nature lovers far and wide.*





BAND

Left row: Husfloen Salo, Ridder, Smith, Funk, D. Zylstra
 M. Zylstra, Tucker, Witherow, Hudson, Becker, Snow
 Mullen, Barr, Peterson, Hunt, Eckert, Knittel
 Hawley, Williams, Bowdish, Gaius, Collings, Nelson

CHORUS

Top row: Wever, Evans, Harvey, Solomon, Munson, Bowes, Hogberg, Wilkinson, Bowman
 Teichroew, Props, Peterson, Newell, Jones, Thomas, Barnes, Gookins, Westlake, Allbaugh
 Weston, Dunn, Thompson, Mellum, Stephens, Boson, Pierce, Raymond, J. Hatch, Martin, Stewart, Kinnear

*Outstanding
 Music*

Music lovers find expression at WWC through Band, Orchestra and Chorus.

Stepping forward in a splash of bright blue and white uniforms, the Band has been this year's college pride and joy . . . "Tramp! Tramp! Tramp!" The Band is marching! At every football game fans reviewed the new uniform in dress maneuvers . . . with rubber boots, upon occasion . . . This pep organization played at every basketball game; supported by the student body, they travelled to Ellensburg for the casaba tilt there . . . Their Bandmen's Informal was the sensational fall social event.

String Ensemble . . . Miss Peggy Vander Griend, Miss Maxine Moldrem, and Mr. Sheldon Wilkins . . . has added another ribbon to WWC's music box.

Listen! Strains of Liszt, then Shubert . . . Orchestra practice . . . Practice . . . for that anxiously awaited, traditional concert for piano and orchestra with Dr. A. C. Hicks as soloist; for Edens Hall Christmas tea; for the Washington Federation of Music Clubs' Convention; for incidental music to "Julius Caesar;" for the spring assembly with Miss Clara Vander Griend and Miss Elsie Tamm as soloists; for Commencement.

Songsters joined each other in Chorus at the Federated Music Clubs' Convention, dedication of the new Bellingham High School, Twentieth Century Club, and in an assembly programme, and joint concert with the Singers' Club.

ORCHESTRA

Top row: Hicks, Blakeslee, Linden, Anderson, Tucker, Barci, Bateman, Tamm, Carr, Hogberg, Schroeder, Fisher, Bailey, Moxley, Wolfe, Eckert, Gaius, Funk, Horn, Allen, Becker
Armstrong, Hatfield, Vander Griend, Williams, Chetwood, Collett, Bushell, Shannon, O. Bushell, McConnell, Witherow, Mitchell, Davis, James





Leidle, Matheson

Spot-lighting

"Personal Appearance"

Drama got off to a start with the production of "Personal Appearance," a la penthouse, in Edens Hall Blue room. This roaring comedy is a satire on the worship of movie stars. It has some social value in debunking the glamour of Hollywood and its world of make-believe. The Blue room echoed with the laughs of its many amusing, and sometimes risqué' wisecracks and situations elicited!

ANNE MATHESON	Carol Arden
TOM EVANS	Bud
REVA BARR	Joyce Struthers
PAT STODDARD	Mrs. Struthers
MERYL WINSHIP	Aunt Kate Barnaby
NAOMI FUSSELL	Gladys
WILTON POOLMAN	Clyde
VERN LEIDLE	Tuttle
HOMER MORRIS	Chauffeur
CATHERINE SMITH	Jessie
LES HIGGENBOTTOM	Radio Announcer

Top row—Smith, Morris, Soloman, Higgenbottom, Evans, Poolman
Fussell, Winship, Matheson, Leidle, Stoddard





Hoppe, Swanson, Leidle
Markgraf, Hatch



"Julius Caesar" cast—Top row—Wilson, Potter, Hogberg, Bowles
Leidle, Courtney, Hatch, Swanson, Markgraf, Solomon, Green, Higginbottom, Hoag, Gooding, Pelegren, Allez,
Wilson, Soukup, Selander

"Julius Caesar"

"Julius Caesar", in a modern manner . . . with Caesar in a cavalry uniform, much like the costuming of any modern dictator . . . was an unpredictable hit . . . With an airplane's hum and the rat-tat-tat of the machine gun, the Shakespearean melodrama had the movement and the colour of a modern propaganda play on Fascism. Every bit of extraordinary lighting equipment made "Julius Caesar" shine in startling outlines of our memory. The orchestra built up the atmosphere which made an unforgettable evening.



Homecoming Game



Chairman Nelson
Grads in the Rain



Echo Oxford
Edward's House Display

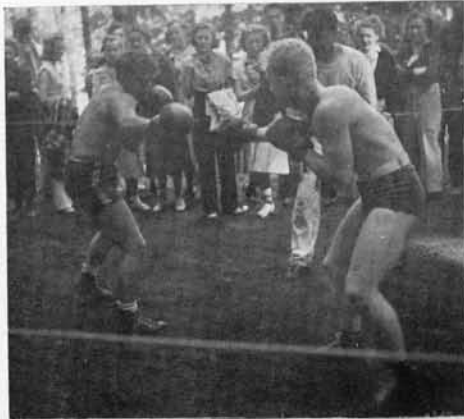
"O-So-Peachy" . . . spells Homecoming . . . an unforgetably perfect week-end . . . Amid a shower of gay chrysanthemums . . . "O-So-Peachies" . . . and rain . . . en masse the student body turned out to greet the grads . . . with colorful house displays . . . amusing programs . . . entertainment reigned . . . Traditional orchids to Chairman Harold Nelson for his efficient planning . . . packing every minute . . . the bonfire . . . dancing . . . music . . . laughter . . . memories . . . to him and his co-workers we give thanks for a very successful Homecoming . . . cheering crowds . . . bouquets to the band's music and drills . . . a fever pitch of excitement . . . inspired our team to a victory over Ellensburg . . . a glorious climax to a glorious Homecoming.

Home
Coming

the all important Campus day

Summer's first all-school fling at Lakewood . . . spankingly clean and freshly pressed slacks were the order of the day . . . when WWC students cast scholastic cares aside to enjoy a day of fun and frolic . . . Individualists braved the depths of Lake Whatcom to participate in the water carnival . . . boats and canoes with neophytes and professionals alike at the oars added excitement to the hour . . . The long line-up added to super-appetites . . . collegiates reveled in baked beans and weiner buns . . . For men only . . . an unpredictable boxing card . . .

The afternoon wind-up with the Faculty versus Manor boys as they vied in piling up scores in a softball game . . . An assembly of all assemblies for evening entertainment . . . planned by Echo Oxford and her committee . . . Harry Wellman's orchestra played popular music . . . for late evening swingsters on the tennis court . . . To Leslie Higginbottom and numerous assistants go laurels for Campus Day's hilarity and success.



Cut out for Success

Names to know . . . names to remember
. . . in 1938 . . . these shone in scholar-
ship and social affairs . . . Remember . . .

☆ Decorative and purposeful . . . that's MAX-
INE MOLDREM . . . chosen our most
popular for her crowning success as Wom-
en's League Prexy and Goddess of the Cam-
pus School Festival . . . Her eyes are on a
Doctor's degree and she aspires to be a
topping teacher and a fancy fiddler . . .
With the charm of her everlasting smile .
we think she will.

☆ FRANK CHORVAT . . . our favorite for
"Joe-college" . . . won the popularity cup
for his display of admirable sportsmanship
. . . "Fritz" proved an able vice-president of
the student body . . . captained his football
team through a successful year and best of
all he is anxious to show the boys how to
dent a pigskin.





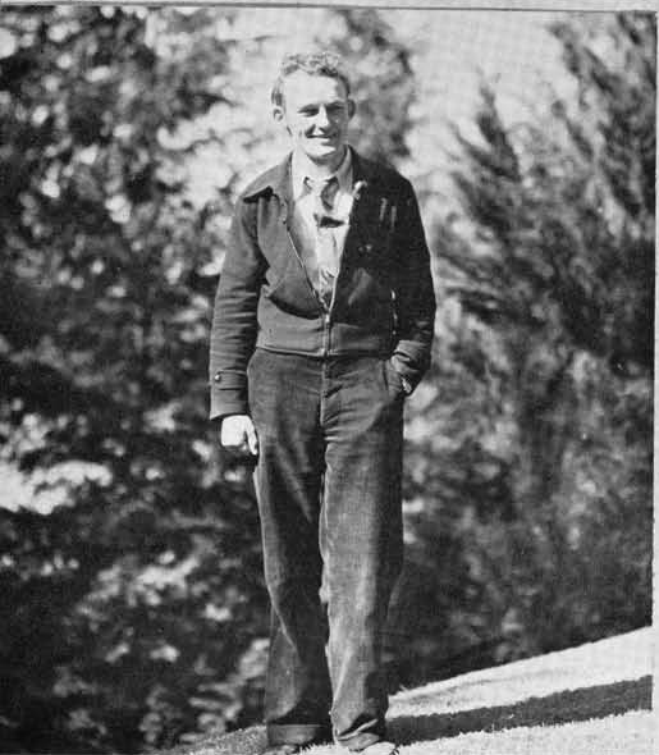
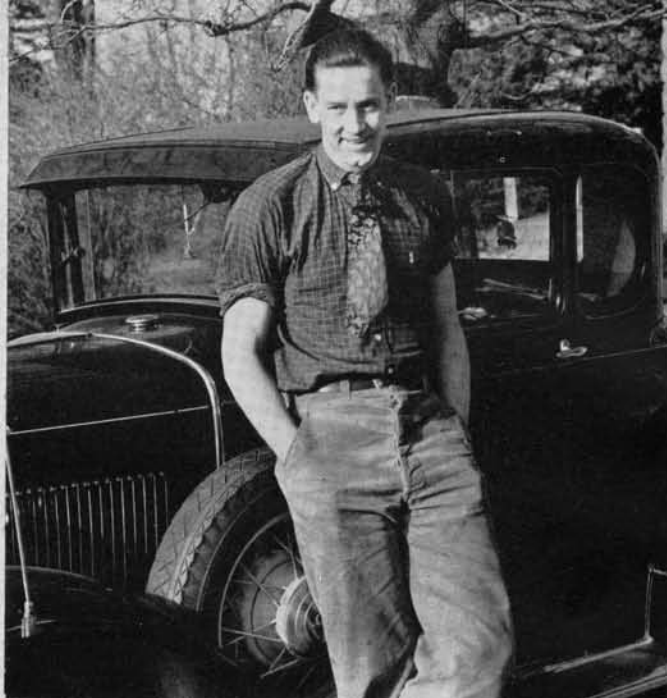
☆ Vivacious, petite VIRGIE BOAL pounded Board of Control tables three quarters . . . wrangled rec hours two quarters . . . with a light touch but a firm one . . . Her fortune of combined energy and personality as in "The Late Christopher Bean" . . . and then . . . in her spare time . . . Virgie loves to ski!



☆ Quiet . . . handsome DON ZYLSTRA, who efficiently and admirably handled the student prexy's job. Famous as a member of the Kitchen Crew and as an organizing, boosting orchestra member . . . A devotee of the French horn and student teaching he expects to go far in the latter . . . We predict his success.

☆ The science minded scholar AL BRANDT has thirteen quarters at WWC to his credit . . . and further to his credit a grade point of 3.47 . . . Spare time and recreation are almost strangers to Al . . . His consuming ambition is to do research work in science . . . Photography fills his hobby hours . . .

☆ Adept at the art of living is KATHERYN HATCH . . . Tops in scholarship popularity . . . Perpetually busy . . . she has the exuberant personality that takes everything in its stride, including a grade point of 3.65 . . . For hobbies Katheryn is dramatic minded and an admitted poor but enthusiastic tennis player . . .



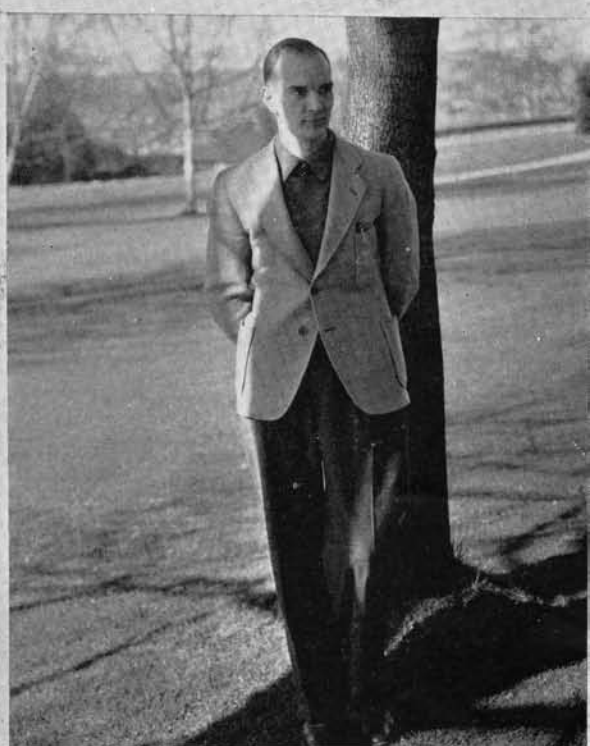
☆ CLARA VANDER GRIEND is ever musical . . . She is prepared for success . . . Prominent in school activities and finished off as president of the Junior-Senior Class.

☆ Inspiring with fresh lucidity, CLARENCE SOUKUP has set a precedent for his "timely" efforts on the Western Viking . . . Proof of his success . . . a seven-column weekly . . .

☆ HAROLD NELSON . . . whose height added to his glory as a basketball captain . . . gained new heights as a Homecoming chairman . . . He makes the grades, too . . .

☆ No "museum" piece is BETTY SWISHER . . . with her love of activities and people she is one of the friendliest WWCer's . . . WAA President . . . big job . . . little girl . . . enormous success . . .

Leading



☆ Possessed of a beautiful profile, KATHERYN HATCH has an unorthodox sense of timing and a quality of fresh lucidness . . . fast . . . and an "E" in Katheryn.

☆ Major . . . on the field and in the halls . . . CLAYTON KNITTLE has won his niche for his scholastic ability . . . He attributes his success to red hair.

☆ A capable, clever girl with an executive flair . . . That's ELEANOR REASONER . . . A grand person blessed with the twin virtues of good sense and good taste.

☆ Our beloved Mr. Wato Tomato in person . . . BOB WHITE . . . versatility and a sense of humor has made him a perennial favorite.

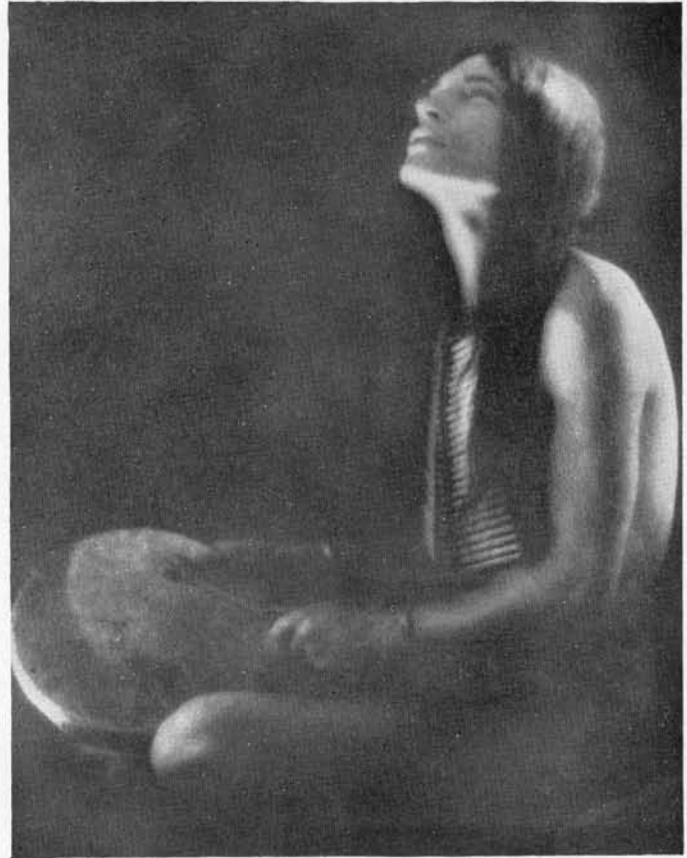
lights

You may find

TUESDAY

Assemblies

On wings of song: tenors, violinists and the Dixie Masters of Melody . . . Accent on rhythm: solo and group dances . . . Studies in black and white of the keyboard with Percy Grainger and Jan Cherniavsky . . . Tie-ups of today's events: illustrated lectures and noted speakers . . . Final background of culture presenting Charles Eagle Plume and Sydna White.



CHIEF EAGLE PLUME

THURSDAY

Teas

Some like it hot . . . when women students of the college drop in for that friendly spot of tea and bit of gossip on Thursday afternoons . . . Sponsors: clubs and organized houses.



Jones, Mariott, Vander Griend, Siemons

FRIDAY

Rec Hours

Girls and men danced them off . . . Popular orchestras played for Friday rec hours held in the afternoon or evening as circumstance demanded . . . Variety was achieved by incorporation of novel ideas: A Washington special—the Cherry Bowl Hop; costumed dancers at the Inhibiton Hop and Barn Dance; Valentine celebration at the Cupid Hop . . . Each class and Klipsun Staff sponsored these college dances.



Freshman Party

SATURDAY



Informals

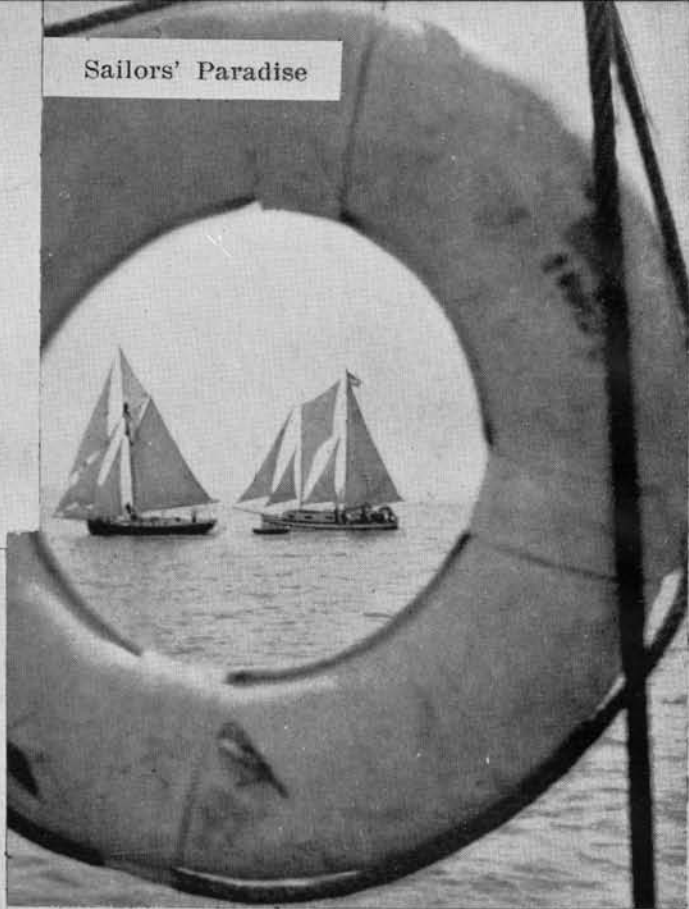
Highlighting the social calendar . . . In settings of balloons, big apples and music notes, informals for the year found sponsors in Women's League, Edens Hall, the Band and the W Club.

Knittle, Barr, Hawley, Molenkamp,
Howell, Zylstra



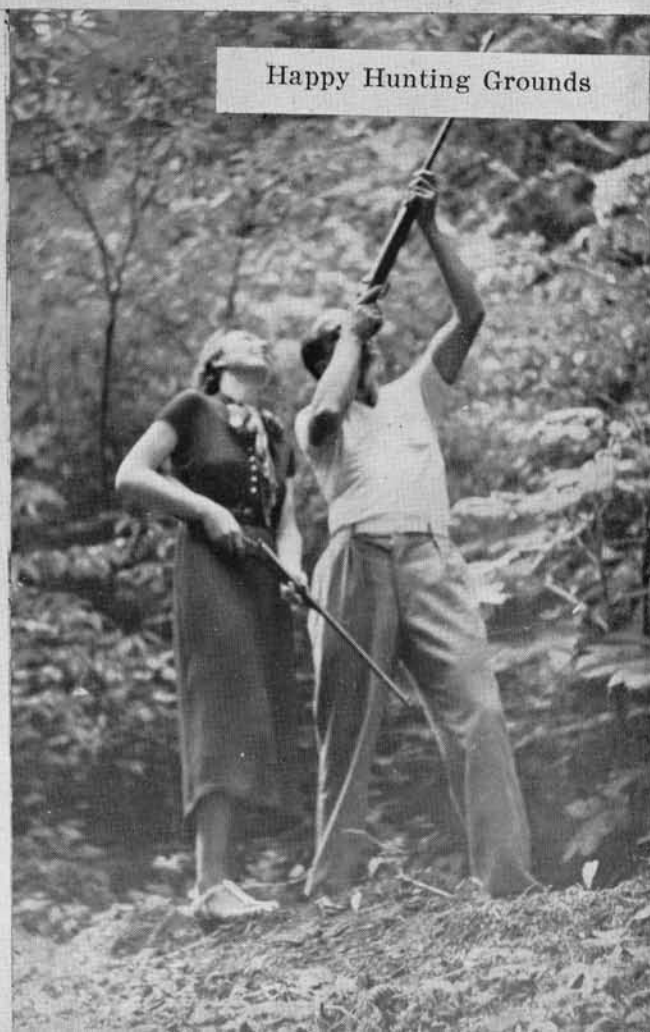
"Card Sharks"

Sailors' Paradise

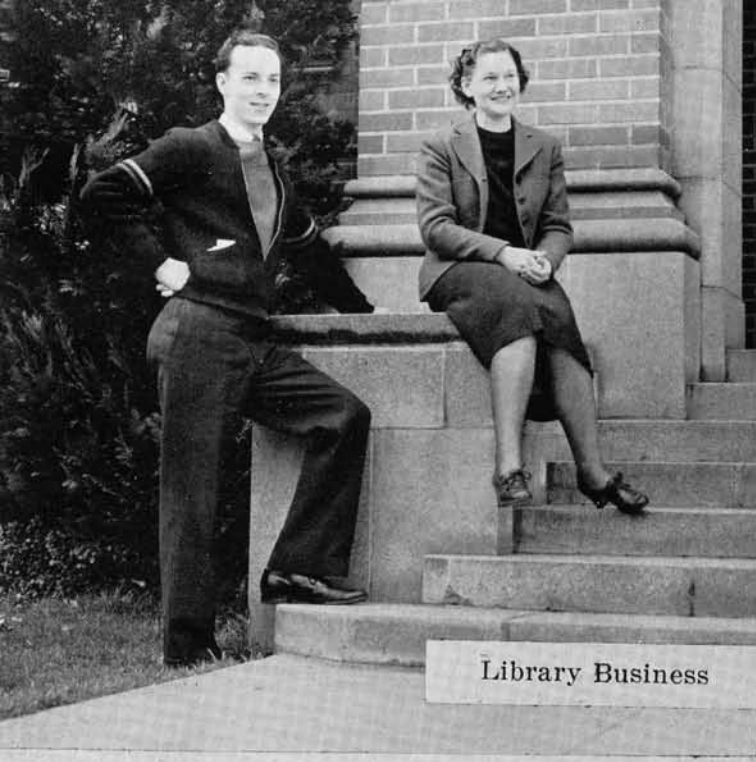


"The Band Steps Out"

Happy Hunting Grounds



Fleet's In!



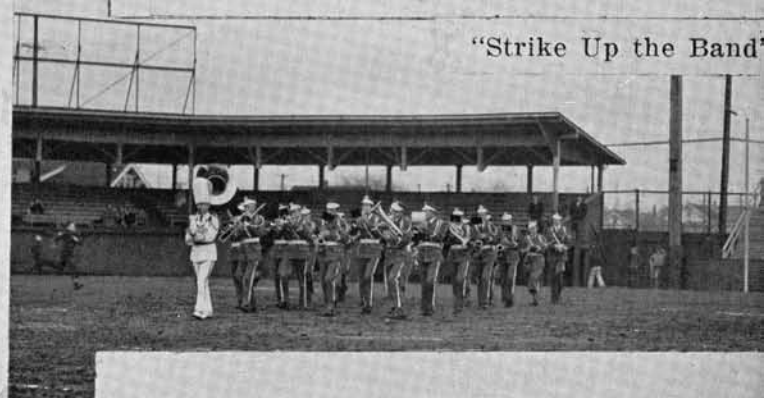
Library Business



"Railbirds"



Heave Me Hearties!



"Strike Up the Band"



No Trespassing



Pene's Stepping



Huh?



"Good Marning!"



Practicin? Up



pring Fever



Funny is it!



Snow Belles



West-ilhouette



Panorama



Experimenting?



A Clean Sweep



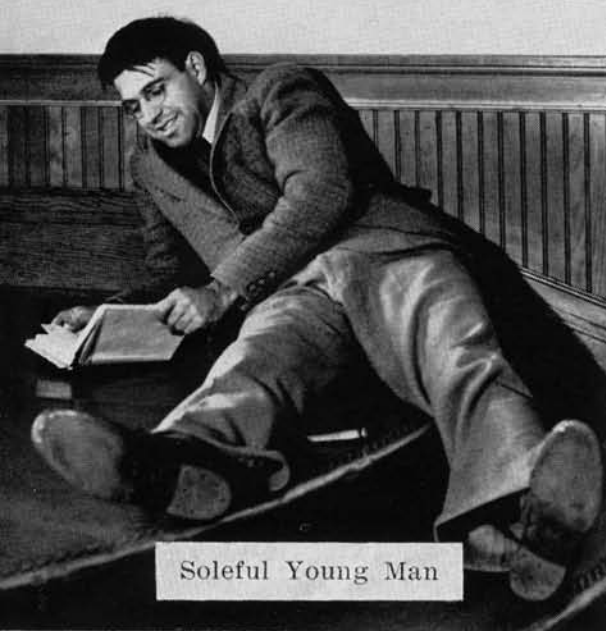
Lou-ke Warm



Pat and "Mike"



Confidentially . . .



Soleful Young Man



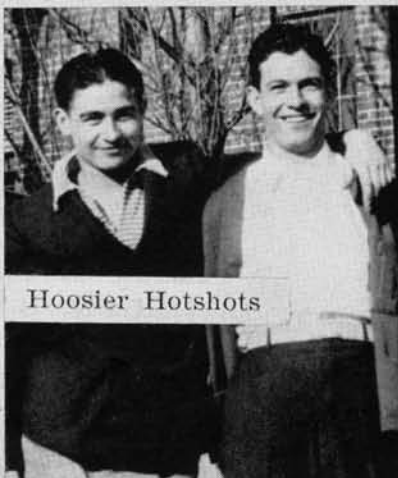
"May-West Porter"



Looks like "wayne"



Pressing Date



Hoosier Hotshots



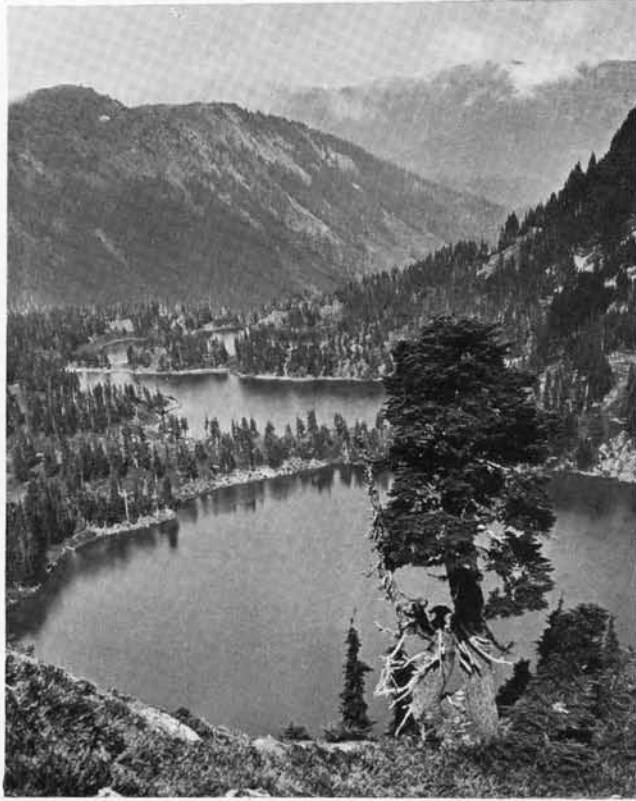
Soliloquizing

ORGANIZATIONS

nights at the round tables . . . for the original minded . . . intangible values . . . for scintillating folk . . . exciting people . . . go-getting groups

☆ *It's only a few miles from the College Campus to this scene of Twin Lakes . . . angler's paradise and a favorite spot for hiking.*

☆ *Keeping informed . . . at the club bulletin board . . . guide of student's affairs.*



PACE SETTERS

Clever campaign speeches . . . our first encounter with a voting machine . . . fastening "I voted, have you?" tags on our shirt fronts . . . A new board . . . gathering Wednesdays at tea time . . . making new budgets . . . planning student fun . . . "rec" hours, Homecoming and Campus Day . . . guiding and advising activities and affairs . . . Quiet, competent leaders . . . names that are all involved with the underground excitement of being a "board member" . . . They dine together in fall and picnic in spring . . . gold pins remind past members of happy service.

The right type of color and showmanship in our campus social and political activity have done much to make this year a success. We have done increasingly better work in our associations with other organizations and our students have participated often in conferences and activities sponsored by the colleges of the coastal region. Cooperation and interest such as have been evidenced are qualities which the student administration is laboring to make traditional . . . We thank you all for your help . . . it was appreciated more than you'll ever know.

DONALD ZYLSTRA

Zylstra, President '37

Wilson, President '38



☆ Success is the keynote of student effort, whether on the athletic field, in club activities, or in scholastic achievement. More and more is this fact becoming evident as student enterprises continue to grow and school spirit reaches new heights. We may point to this year as being outstanding in W.W.C. history

DONALD M. WILSON



Top row: Carver, White, Chorvat
Wilson, Masters, Booth, Vander Griend,
Zylstra, Neil, Boal, Bushell, Thomas

BOARD OF CONTROL

WWC's budgeteers and law body, the Board of Control, started out on a year of accomplishment. Led by Don Zylstra an ambitious board saw several reforms . . . they inaugurated band uniforms, sent the band to Cheney . . . started dusting off the constitution and chose spring for student elections.

Winter elections now saw Don Wilson, a board veteran after serving as a four-quarter representative, with the prexy's gavel. Members filed full time in guiding student affairs and re-organizing the constitution. Their careful thoroughness gave an efficient touch . . . and Lakewood was insured against fire . . . Dignity added to the board by the background of new tables and chairs.

Spring elections . . . and the student's confidence in Bud Neil as their next president was confirmed by a heavy vote.

FALL QUARTER

DON ZYLSTRA	<i>President</i>
FRANK CHORVAT	<i>Vice-President</i>
JOE THOMAS	<i>Secretary</i>
CLARA VANDER GRIEND, VIRGIE BOAL, HELEN MASTERS	
BOB WHITE, RALPH NEIL, DON WILSON . <i>Student Representatives</i>	
MISS MYRA BOOTH, MR. SAM CARVER,	
MR. DONALD BUSHELL	<i>Faculty Representatives</i>

WINTER and SPRING QUARTERS

DON WILSON	<i>President</i>
PHILLIP KIDDER	<i>Vice-President</i>
JOE THOMAS	<i>Secretary</i>
PAULINE BARNES, SHIRLEY ROGERS, HELEN MASTERS, CLARA	
VANDER GRIEND, BOB WHITE, RALPH NEIL . <i>Student Representatives</i>	
MISS CHARLOTTE RICHARDSON, MR. PAUL GRIM,	
MR. SAM CARVER	<i>Faculty Representatives</i>

Thomas, Wilson, Masters, Rogers, Grim, Barnes, Vander Griend, Kidder, Neil, Carver, White



NEWS NOTES

This with that . . . this Western Viking with that tremendous build-up of finances through amounts of advertising not equaled previously in a decade, led to issuance of a seven-column paper both fall and spring quarters . . . The staff stepped into Homecoming by editing the annual Homecoming booklet, an initial attempt and for them, highly successful from the monetary point of view . . . When Vikingites poured at a tea, it proved to be one of the best attended of the year . . . For major occasions off campus, the skating rink, homes and print shop provided settings for sociability in the form of parties and initiations . . . In accord with the times, Roosevelt and Lappenbusch were chosen as the men of the year . . . A contest which called for the entering of treasured baby pictures in view of winning a prize netted 68 entrants . . . From first to last Editor Clarence Soukup and his staff of writers have made the year 1938, one of worthwhile accomplishment for the Western Viking. Adding to its other glories, the staff was composed of one of the largest memberships in history . . . Vikingites must work hard to meet the Wednesday noon deadline — or face the consequences . . . Gold Viking pins found proud owners in those staff members who were rewarded for four quarters of faithful work.

VIKING STAFF

Hill, Armstrong, Spangler, Handbloom, Barci, Heathers, Bowdish, Templin, Kelly, Soukup, Herrold, Bolster, Gardner, Fowler, Boothe

Soukup, Editor



GALLEY SLAVES

CLARENCE SOUKUP	<i>Editor-in-Chief</i>
EARL ECKERT, EVAN HILL	<i>Business Managers</i>
DON GOODING	<i>News Writer</i>
JACK CARVER, JIM TAYLOR, BILL FOWLER	<i>Sports Editors</i>
SYBIL HINCHLIFFE, HENRY FRANCIS, DICK FOWLER	<i>Feature Editors</i>
MERNA ROWE, VIRGINIA FEGLEY	<i>Society Editors</i>
FORREST HAWLEY	<i>Art Editor</i>
BETTY BOWDISH, LOIS MENDENHALL	<i>Copy Editors</i>
BARBARA BOOTHE	<i>Advertising Manager</i>

Special Writers and Reporters: Bever, Binkie, Bolster, Barbara Bowdish, Burnham, Call, Cary, Carlyle, M. Clarke, Collings, P. Cooper, Daley, Davies, Eaton, Engelson, Evich, Fixx, Forster, B. Fowler, Frederickson, Gardner, Gerry, Green, Greene, Hammer, Hanbloom, Harrison, J. Hatch, K. Hatch, Heathers, Herrold, Hilby, Hostetter, Humphreys, E. Jacobsen, P. Jenkins, Eileen Johnson, Marian Jones, Kaufman, Kelly, Kilbourne, Lee, Lindstrom, Lucid, Meyer, A. Mickel, M. Monteith, Morgan, Nilsen, Skinner, Sonneland, Spangler, P. Stoddard, Tasoni, Templin, H. Theil, Thon, Tougaw, W. Weber, B. White, Whitmore.

Hill, Business Manager '38 Eckert, Business Manager '37

Noses for news . . . The Viking Staff hit their beats every day in the week to put out the Viking . . . And throwing the best of their talents on the firing line . . . they surprised the student body with a riotous issue on April Fool's Day . . . To set an unequalled precedent . . . you were able to find the Viking ready for distribution at the designated time on every Friday . . .



Top row: Hansen, Mendenhall, Francis, Mickle, Cooper, Hilby Hinchliffe, Spangler, Hatch, Hostetter, J. Hatch, Hawley, P. Green, Templin, Boothe, Fegley, Herrold, Bolster, Barci, Bowdish, Carlyle, Eckert
 Carver, Kaufman, Call, Eaton, Meyers, Fussell, Dean, Morgan, Gooding, Monteith, Sonneland, Burnham, Shrum, Green, Lindstrom, Johnson, Tasoni, Soukup





Green, Evans, Templin, Weber, Molenkamp, Trickey, Ridder, Hawley, Carver, Hinchliffe, Dunn, Fussell



Eleanor Reasoner, Editor

KLIPSUN 1938

Klipsun . . . with 1938 Chamber of Commerce motif, has spotlighted for you the life of a modern, progressive college of education, W.W.C. . . . a college with a scenic wonderland of nature's best at its door . . . shaded lawns of a campus where new moons swing above the crest of Sehome; many islands in the slanting rays of the setting sun beckon across the waters of Puget Sound; fir-fringed, mirror lakes; solitude and silence in fragrant evergreen forests; and towering above all the majestic splendor of snow-covered Mt. Baker — a favorite playground for winter sports enthusiasts . . . There has been unfolded for you through hallowed memories, student life, an epic of those who have obtained a large background of culture and knowledge here . . . The Klipsun staff joins with Editor Eleanor Reasoner in expressing the hope that adequate tribute has been paid to college "credits", "football" Saturdays, "informal" Fridays, "library" evenings, "hours" in class. 'chat sessions', and to the men and women in the "College by the Sea."

THEY PUT IT OUT

ELEANOR REASONER	<i>Chief Director</i>
JANE TEMPLIN	<i>Assistant Director</i>
BILL FOWLER	<i>Financial Secretary</i>
ANNA ULLIN	<i>Counselor</i>
FORREST HAWLEY	<i>Art Director</i>
HELEN TRICKEY	<i>Assistant Art Director</i>
TOM EVANS	<i>Photography Chief</i>
FRANCES DALEY, SYBIL HINCHLIFFE, NORB CORMIER	<i>Scenario</i>
CLARENCE SOUKUP, KATHRYN DUNN	<i>Sports Scenario</i>
ALICE MOLENKAMP	<i>Recording Secretary</i>
PATRICIA GREEN	<i>Publicity Secretary</i>
JEAN CARVER, BILL RIDDER, WAYNE WEBER	<i>Information Directors</i>
NAOMI FUSSELL	<i>Statistician</i>

Klipsun Staff . . . a gathering of peppy, busy, energetic individuals . . . This year more active than ever before . . . catching the public eye . . . with its clever and original publicity stunts . . . its Inhibition Hop . . . memorable for lively entertainment . . . costumed hilarity . . . Cups to the lucky pair who were rated the "tops" in Klipsun's Popularity contest . . . The Leopold's Rose Room lent atmosphere for the fall off-to-work banquet . . . A picnic touched off a year of combined effort.

Top row: Cormier, Soukup, Fowler, Ridder
Carver, Hinchliffe, Dunn, Trickey, Miss Ullin
Evans, Reasoner, Molenkamp, Green, Templin, Hawley

Bill Fowler, Business Manager





Moldrem, President

Top row—McNamee, Collett, Schold, Miss Johnson, J. Hatch, Pulver, Miss Countryman
M. Hatch, Franklin, Boal, Borgstedt, Kink, Moldrem

ASSOCIATED WOMEN

Women's League, every coed's organization, seeks to fill some everyday needs of its members . . . a soft, comfortable, pleasant sitting room for chat sessions; refreshing Thursday afternoon teas; smart fall and spring style shows; quarterly informals for week-end interest.

"Change" . . . different name, Hereafter they shall be known as Associated Women Students . . . revised talent cards, new tea service, another magazine subscription . . . has been the outstanding overtone of Women's activities this school year . . .

"Tradition," colorful undertone to A.W.S. industry, has made itself evident in many little ways . . . campus tours, campus sisters, kid party . . . Weekly commission meetings have held their own . . . Assemblies, unifying note in the Association, have followed the theme of the three D's . . . dolls, dancers, and dramatics.

Most ambitious undertaking for 1937-38 has been the conference for high school girls' clubs from Whatcom and Skagit counties. General Chairman Margaret Schold admirably superintended the plans and preparations for the March event . . . Popular President Maxine Moldrem did her share to make the initial girls' conference a success . . . Officers are hoping that what they have begun will become traditional . . . worthwhile and therefore traditional.

Valkyrie

Valkyries, blue-sweatered pep gang, drum up the vocal trade for Western Washington athletic contests. Evidence: organized sections at football and basketball games. By no means one-sided, these lively lasses lend support to social affairs, too . . . give teas, sponsor rec hours . . . Enthusiastic service for their school is the keynote to Valkyrie activity. To put it in the words of Martha Lou Pulver, club president, they stand "on call" . . . ready to help any school organization . . . Examples: ushering at college dramatic productions, arranging amusing stunts for dull moments between basketball halves . . . Once a month members gather for business and social-izing . . . Formal initiation holds precedent, while quarterly banquets maintain that certain standing among club personnel . . . Most highspirited of events to Valkyrie girls is their spring sailing cruise down Bellingham Bay.

"W" Club

"W" Club, sweater-earner register for the male faction of W.W.C., was the organ by which law and order were maintained at school athletic contests . . . President Chet Dombroski, assisted by Don Holder, was the play-by-play announcer for pigskin tussles during fall quarter . . . With the direction of M. T. Nelson, pugilists of every variety matched abilities at the annual winter quarter "smoker" while less pugnacious students helped to swell the club treasury by paying the designated admission price . . . Unbridled hilarity was attendant at the Cannibal initiation held at Larrabee State Park . . . Tripping the light fantastic at the Chuckanut Shell, these athletes rounded out their program with an informal . . . John Fox and Leo Lange, vice-president and secretary, were Dombroski's able henchmen.

"W" CLUB

Phair, Holtzheimer, Davis, Chase, Iverson, Kidder, Weber, Nelson, Dombroski, Popovic, Ames, Fowler, Lange, Cook, Murphy, Tesreau, Howatt, M. Nelson



VALKYRIE

Top row—Smith, Grier, Lindstrom, Tveten, Rosensweig, Bennington Crandell, Richardson, Oberleitner, Helms, Peasley, C. Vander Griend, Carver Westlake, Ferguson, Myers, Boothe, Barnes, Franklin, Borgstedt Vander Griend, Swisher, Howell, Thon, Fegley, Cooper, McNamee, Reasoner Osler, Oxford, Dickenson, Boal, Miss Garvin, Pulver, Moldrem, Masters, Herrold





Inter Club Council

Inter-Club Council, concentration center for clubs, jumped last fall at the sound of the whistle by promoting the club rally the first week of school . . . Politicians and citizens of W.W.C. have no difficulty in recalling the wearing of the orange—"I've voted. Have you?"—tags . . . They revised the activity point system, sponsored luncheons for assembly speakers, and managed the annual nominating convention.

Moldrem, Pickett, Siemons, Pulver, Vander Griend, Davis, Higgenbottom, Cunningham, Swisher



Scholarship

Scholarship Society requires members to reach and maintain a 3.7 in grades . . . Activity of this erudite assemblage focuses on the selection of Western Washington's two foremost students of the college year . . . Competent Ethel Ross, served as president of Scholarship fall quarter; and persuasive Patricia Green was the guiding star of the Society winter and spring quarters.

Top row—Knittle, Brandt, White
Cowles, Ross, Baird, Clibon
Hatch, Green, Winterhalter



Y. W. C. A.

Y.W.C.A., religious center of interest for young women on the campus, meets Thursday noons for purposeful study . . . W.W.C. representatives and other College representatives gather at "The Firs," outstanding conference grounds to refill together their spiritual wells of experience, while mid-winter brings its traditional local college Bible conference.

Top row—Giberson, Ellis, Vinje, Neuerburg
Tucker, Nygard, Gunderson, Vallentgoed, McConnaughey,
Teichroew
Orr, Cowles, E. Blandau, Pierce, Kaufman
Blandau, Martin, Sperry, Meade, Kuljis, Davis

Organized Houses

Organized houses are W.W.C.'s own democratic interpretation of sororities . . . A desire to batch is the prime requisite for admission to these sacred fanes . . . House presidents handle the official business; social chairmen fill in the blanks of the fun calendar . . . Secrecy, and brain waves skirt the campus as Homecoming reappears—it's the house decoration contest! Ambition: to win that banner.

Egeland, Hinchliffe, J. Hatch, Armstrong, Hankamp



Dorm

Edens Hall provided the setting for many social activities . . . Evening Highlights: a dinner dance . . . mellow music at the Spring Informal . . . initiations at the expense of newcomers . . . Holidays were the inspiration for candlelight dinners . . . Daytime triumphs at Christmas, May Day, and Senior breakfasts . . . A toast to win some Betty Howell, their President.

Johnson, Pulver, C. Vandergriend, Tveten, Westlake,
P. Barnes

Willison, McNamee, Masters, Chappell
Howell



I. R. C.

Shades of Europe . . . IRC held every-other Monday luncheon meetings in addition to regular club gatherings to discuss foreign affairs . . . The club sponsored a round table discussion at a county conference, and originated "International" week on the campus . . . Many new members penned their names to the club roster . . . President, Nina Mae Pickett, Una Clibon, Merritt Frizzell, Bill Strickfaden and advisor, Miss Nora Cummins attended an IRC conference at Oregon's Reed College.

Top row—Frizzell, Neil, Osterberg
Pickett, Fackler, Davis, Cummins





Alkisiah

Top row—Wicklund, Burdett, Vallentgoed, Schold
Tomlinson, Johnson, Armstrong, Lammers, Gookins,
A. Johnson, Wainio, Heaton
Hall, J. Peterson, Linden, I. Peterson, J. Hatch
Hopper, Holtzheimer, Hostetter, Curtis, Rittenberg,
Richardson
Nilson, Mahan, Gerard, Cunningham, Luccolini,
DeBurgh, D. Peterson



W. A. A.

Top row—Wicklund, McCabe, Johnson, Hicklin, Hall,
P. Johnson, Meek
Martinson, Vallentgoed, Masters, Pulver, Smith, S. Peterson,
K. Dunn, Grier, Anderson, Armstrong, Toler,
Hankamp
Rowe, Boal, Allen, Barnard, Shea, Townsend, Gookins,
Holdsworth, Beatty, Fowler, N. Dunn
Carlyle, D. Peterson, Rittenberg, Tiplin, Dunning, Baldwin,
Finkbonner, G. Johnson, Barth, Mullen, A. Johnson
Bowdish, Fisher, Stephens, Seibel, Allinson, Swisher,
Egeland, Forster, Dorcy
Barci, Shuman, Stevens, Wanless, Clancy, Davies

Alkisiah

A Napoleonic glitter of events was in Alkisiah's itinerary as they traveled from Italy to France . . . from England to Russia in bi-monthly confabs . . . Clara Cunningham . . . president . . . directed these trips and Miss Hopper advised . . . Stop overs along the way: Christmas Party . . . Valentine banquet . . . Gordon Dunthorne's luncheon . . . Spring sail.

W. A. A.

W. A. A. fall roundup netted ninety new members . . . an ambitious lot . . . for they scooped first prize for Homecoming window display . . . Salute to their organized sports . . . Memorable events: Initiation ceremonies . . . Hallowe'en goblins . . . Prexy dancing at the Swedish festival . . . skating spills . . . a get-acquainted Valentine's Day . . . Mt. Baker ski Interlude . . . Enthusiasm plus ability equals president Betty Swisher.

Blue Triangle

Blue Triangle members have enjoyed talking and the talk has been about: religions of the world . . . A Thanksgiving basket was given to a family . . . Christmas gifts for several trees . . . Games and food were often enjoyed at the meetings . . . Leading inspiration, Alice Siemons . . . Miss Hazel Plympton, a charming advisor.

Top row—Barnes, Mullen, N. Dunn, Egeland, Tudor, Holstad, Hinchliffe
Rosenzweig, Raymond, Toler
M. Hatch, Allison, Gahr, Carlyle, Aust, E. Smith, Dunning, McElhoe
Vogler, Patterson, Siemons, Forster, Davis, Weston



Scepter and Shield

Scepter and Shield . . . a campus organization charted a course of leadership . . . Potluck dinners maintained good fellowship . . . Hilarity on a hike to Lost Lake . . . Salute to Lois Barnard, who quietly and capably led the club . . . And to the three musketeers, Armstrong, Baldwin, and Tiplin . . . able assistants . . . Miss Booth advised.

Top row—A. Johnson, Booth, Baldwin, Beatty, A. Berg
Cowles, Wheeler, E. Blandeau, D. Peterson, Forster,
Gahr
Mullen, Tiplin, F. Blandau, Rittenberg, Barnard



Vanadis Bragi

Budding geniuses among Vanadis Bragi bloomed when the precedent of a creative writing meeting was established . . . A Bragi-eye view of work on representative European literature included discussion of plays, poetry and novels . . . Jean Summers was the organizing prexy . . . Sylvia Williams, vice-president, slated programs . . . Dr. A. C. Hicks, as advisor, lent aid with his store of interesting knowledge.

Top row—Wilson, Hicks, Daly, Markgraf
Fowler, Schaus, Holstead, Williams, Burg
Hall, Barnard, Wollan, Baird, Ross, Clifton
Frazier, Peterson, Summers, Cowles, Richards



ATHLETICS

*major and minor . . . pigskin patterings . . .
headline news . . . clouds of glory . . . and
athletic Apollos . . . lithe passes . . . smooth
action*

☆ *Sunrise on the snowlanes of Mt. Baker . . . favorite ski haunt of students.*

☆ *Spring . . . and casual groups enjoy the sunshine . . . tracksters absorbing atmosphere.*





"Inspiration" Alpaugh



Captain Chorvat



Chet Blackington



PIGSSKIN PUSHERS

With a football schedule that could be called a "toughie" in any man's language, Coach Charles Lappenbusch and his barrel chested charges came out on the longer side of the win and lose column, making the most successful season since Lappenbusch took over the tutelage of the gridiron heroes up on our high hill.

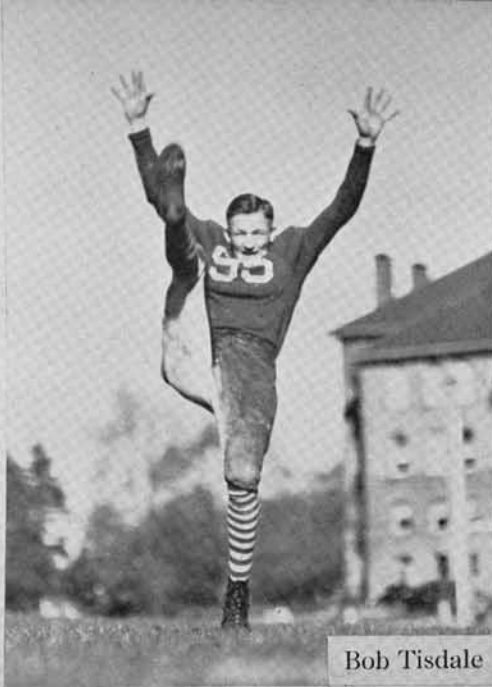
The Vikings won four games, lost two, and tied one; rolled up 58 points to their opponents' 29; and took second place in the tri-college conference.

The season opened against the Pacific Lutheran College, a three year jinx team, that had woven a spell of zeros around the Vikings. Furthermore, beside the element of the jinx, five (wished they could have been) Vikings were included in the Lutheran personnel. The Lutherans forgot their magic wand and the Vikings won easily 19-0.

(continued on page 72)



Al Munkres



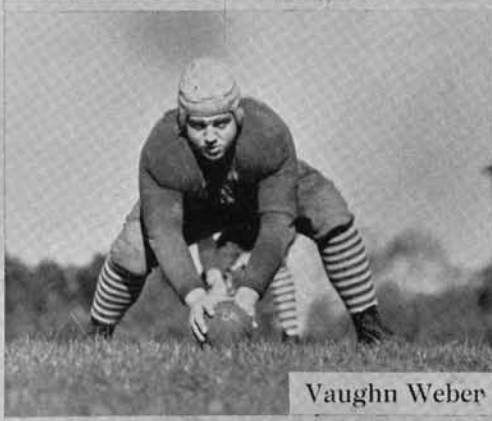
Bob Tisdale



Howard Jones



Art Mickle



Vaughn Weber



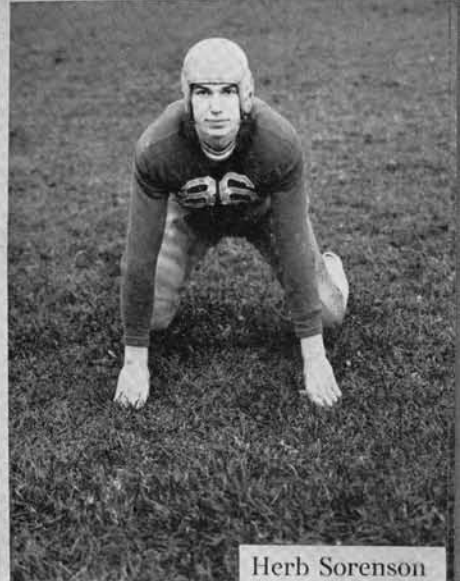
Johnny Fox



Coach Lappenbusch



Russell Davis



Herb Sorenson

Side scores . . . Lappy's ground work . . . the yell leader's contortions . . . rolling helmets . . . Nagrodski's "ballet" footwork . . . Chorvat's plow tactics . . . the crowd roars . . . cheers for Lange . . . "Inspirational Alpaugh" . . . Smith's sure eye and able kick . . . the fine spirit and drive of the whole team.

PIGSKIN PUSHERS---Continued

Seeking their first win in five years over the St. Martin Rangers, the Vikings found it tough sledding and accepted a 0-0 draw rather than another Ranger decision.

The old saying that "eleven good big men are better than eleven good little men" proved true when the Vikings faced the University of Washington Frosh in the third game of the season. The Husky yearlings had a little too much on the ball for the Western Collegians and took the game in stride 8-0. Baldwin and Chorvat got their heads together and kept the Vikings very much in the game.

The defeat by the Huskies was just enough bad medicine to leave a bad taste in the mouths of the Vikings, and they rinsed it out with a 12 to 8 victory over the Washington State Cougar pups.

A little tricky footwork by Chorvat brought the Vikings their first touchdown after a run from the eleven yard line. Two aerial bombs from Tisdale to Smith gave the Vikings their second score. A little aerial work by the Frosh and the pushing of the Vikings back on their haunches on the wrong side of the goal line gave the Cougars their eight points.

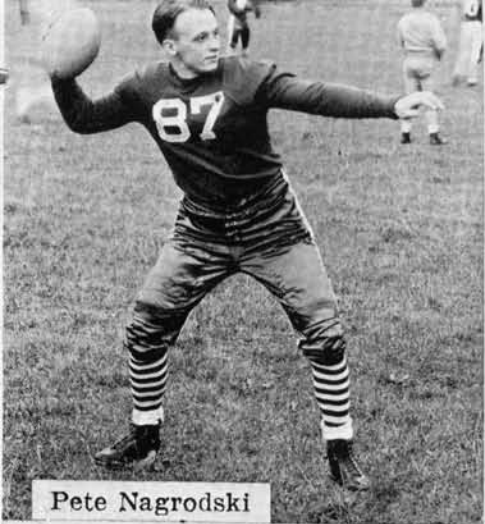
An invasion of the Cheney stronghold which always seems a disastrous thing, proved the way for a second Viking defeat 13-6. The Norse had plenty of "fightem" and "scrappem" between the twenty yard lines, but the necessary "umph" was not there on the goal line thrusts. This Savage victory gave Cheney the tri-college championship for the fourth straight year.

Returning to the home field for the annual Homecoming game, the Vikings whipped the Ellensburg Wildcats 9-0, and by that little piece of work earned themselves second place in the conference standings. Although the Wildcat offense was superior, a beautiful place kick by George Smith, and a shoveled up fumble along with a twenty yard trot by Leon Alpaugh gave the Vikings their margin of victory.

In a game that could be classed as a "humdinger," the Vikings wound up their season with a 12-0 victory over the Linfield Wildcats. The game was played on Thanksgiving day. The whole team was commended for its excellent playing, while Link Sarles and Howard Jones were given the bouquets for their individual exhibitions.

All of the games with the exception of the Cheney game were played on Battersby field. The Ellensburg and Linfield games were played in the daytime while the rest were under the lights.

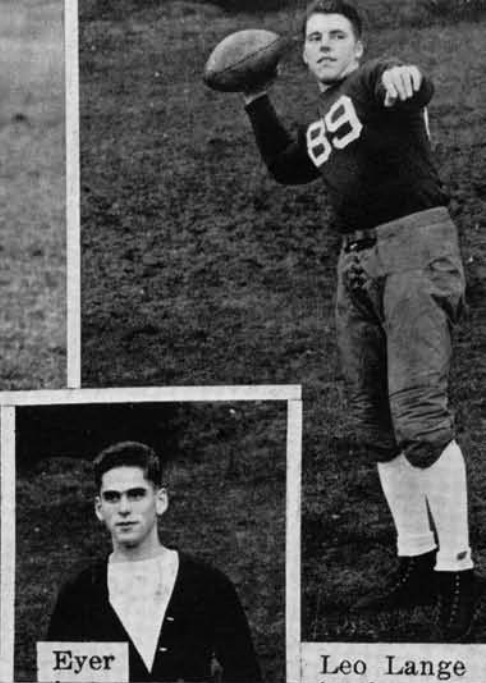
VIKINGS	19	Pacific Lutheran College.....	0
VIKINGS	0	St. Martins College.....	0
VIKINGS	0	University Frosh.....	8
VIKINGS	12	Washington State Frosh.....	8
VIKINGS	6	Cheney College.....	13
VIKINGS	9	Ellensburg College.....	0
VIKINGS	12	Linfield College.....	0
	—		—
Total	58		29



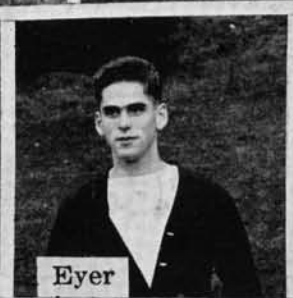
Pete Nagrodski



Don Bell



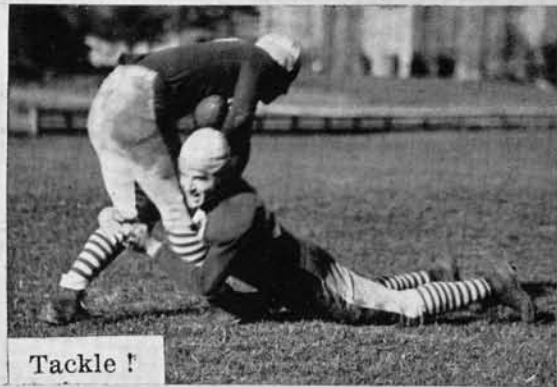
Leo Lange



Eyer



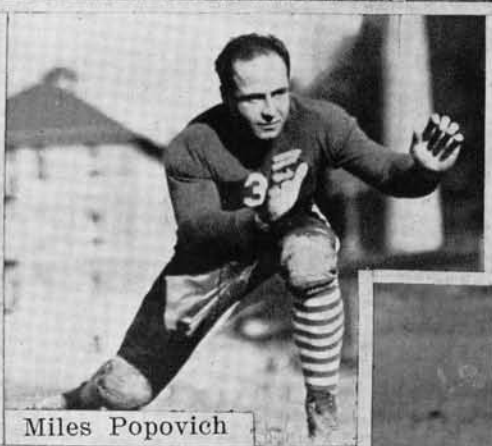
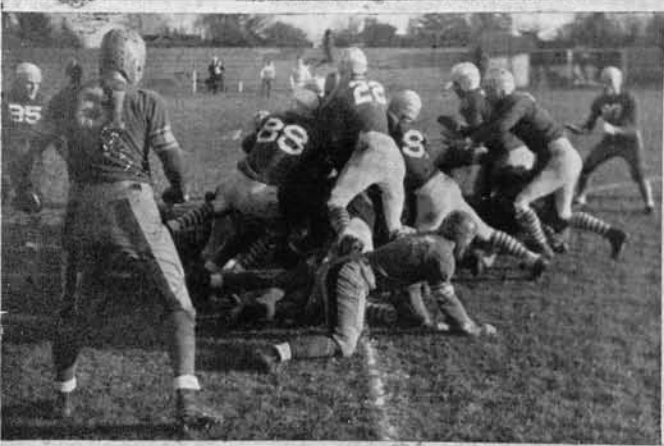
Ed Reischman



Tackle!



Link Sarles



Miles Popovich



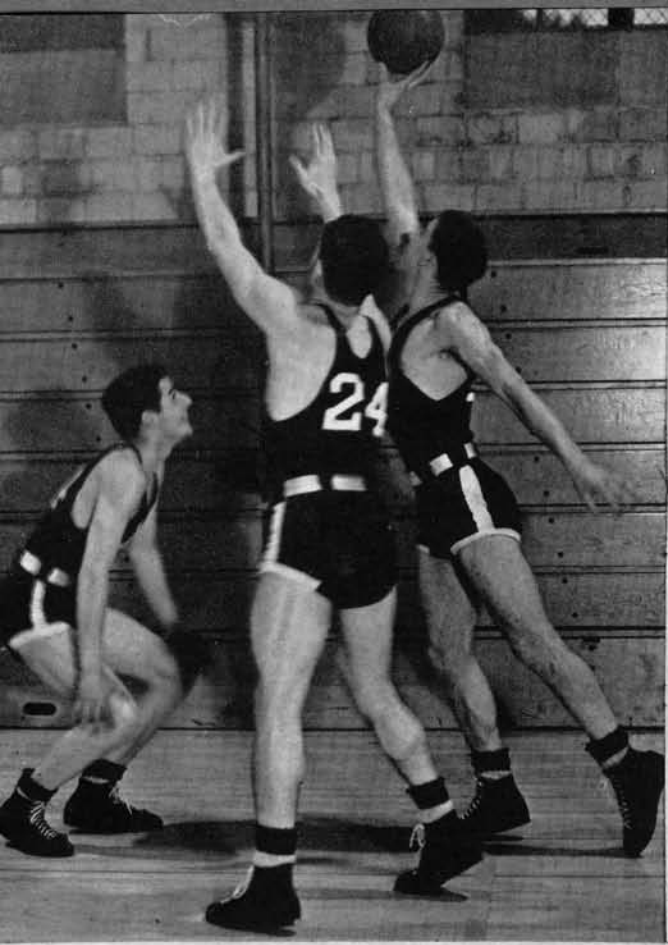
Glen Smith



Ermin Holtzeimer



Fred Baldwin



Jess Odell



Herman Court,



Ralph Vogel



Joe Moses



Joe Harvie



Norman Carr



Don Bell



Capt. Nelson



Russell Eyer



Stanley Targus



Bob Tisdale



Nelson, Odell, Bell, Fox, Poolman, Gagnon, Moses

TWINE SNAPPERS

Breaking about even in their games with college opponents of their own calibre, the Viking basketball squad finished a mediocre season for 1937-38.

The tri-college title again went to those mighty Savages of Cheney for the third straight year. Only Mr. Kibbe remembers the time when the Vikings last won a tri-college crown. Cheney won an easy 55-37 victory on their invasion of the Viking court in the conference opener.

The Norse hopes for that much coveted title were throttled by a disastrous trip over the Cascades to villages of Ellensburg and Cheney. The Wildcats whipped them first 39-35 and then the Savages with a golden horseshoe on each shoulder eked out a 50-49 win in the closing moments.

In their first attempt to step into "big time", the Vikings included the University of Washington varsity on their schedule. The boys from the U had a little too much drive for the local basketeers and won easily 55-21.

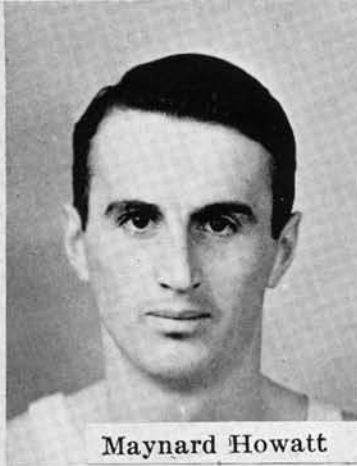
Little Joe Moses, popular favorite of the fans, won honors on the tri-college team, while Harold Nelson, Ed Moses, Johnny Fox, Bob Tisdal, Joe Harvie, and Glen Smith were instrumental in Viking victories.

Camera shy swishers made a pictorial recording of the year incomplete.

VIKINGS	LOCATION	OPPONENTS
Vikings.....	21..... Here	55 University of Washington
Vikings.....	55..... There	35Linfield College
Vikings.....	37..... There	51Oregon Normal
Vikings.....	37..... Here	55Cheney
Vikings.....	44..... Here	42St. Martins
Vikings.....	40..... Here	37Oregon Normal
Vikings.....	35..... There	39Ellensburg
Vikings.....	49..... There	50Cheney
Vikings.....	33..... Here	30Ellensburg



John Ellis



Maynard Howatt



Mike Zylstra



Frank Anderson



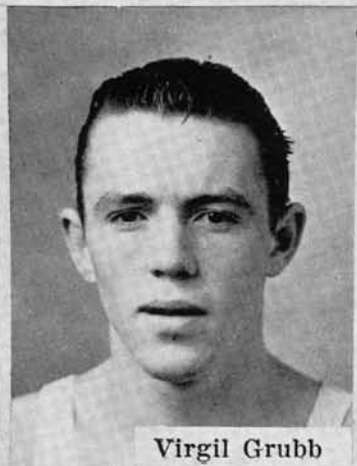
Ralph Vogel



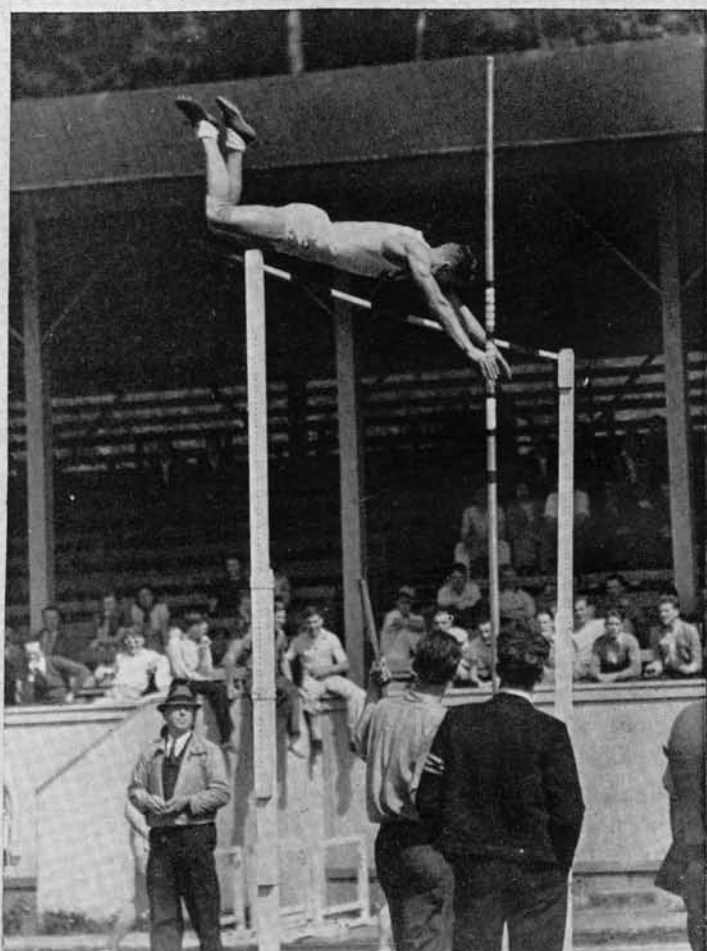
Dale Courtney



Wayne Weber



Virgil Grubb



Dan Gagnon



Arnold Carlson





Racing start, Nelson in discus form, Coach Sam Carver "times" them . . .

CINDER STRUTTERS

Although decisively defeating the College of Puget Sound 72-59 in the first track meet of the season, Coach Sam Carver and his cinder eaters showed only an even chance of being the team to beat in the Tri-college meet at Ellensburg.

Don Holder, veteran of half a decade, led the Vikings to victory in the Tacoma meet, scoring 14 points. Dan Gagnon, Viking fire ball, rolled to victory in the 100 and 220 yard dashes, while Mike Zylstra, distance phenomenon from Lynden, contributed with a win in the mile, and second in the two mile.

With the relay as the deciding event, the Vikings lost their second track meet of the season to Ellensburg 66 $\frac{2}{3}$ to 64 $\frac{1}{3}$. The meet was held on the Bellingham track.

In their annual meet with the University of Washington Frosh in the Husky stadium, the Vikings held the green tide to a 73 $\frac{1}{3}$ to 57 $\frac{2}{3}$ score. It was Dan Gagnon, again, who was the sensation of the meet. The muscular speedster streamed to victory in his specialties, the 100 and 220 yard dashes.

The only other meet remaining on the Viking schedule was the Tri-college competition held at Ellensburg. The Vikings were the defending champions.

An intra-class meet held before the season's schedule had gained headway resulted in a win for Howatt's Whites over Gagnon's Blues.

Outstanding stars of the season were Dan Gagnon, speedy dash man, Russ Eyer, pole vaulter, Mike Zylstra, miler, Wayne Weber, broad jumper, Maynard Howatt, two miler, Virgil Grubb, quarter miler, Bob Tisdale, high hurdler, and Don Holder, veteran timber topper.

Vikings	72	College of Puget Sound.....	59
"	64	Ellensburg	67
"	58	University of Washington Frosh	73
"		Cheney-Ellensburg	

(Tri-college Meet)



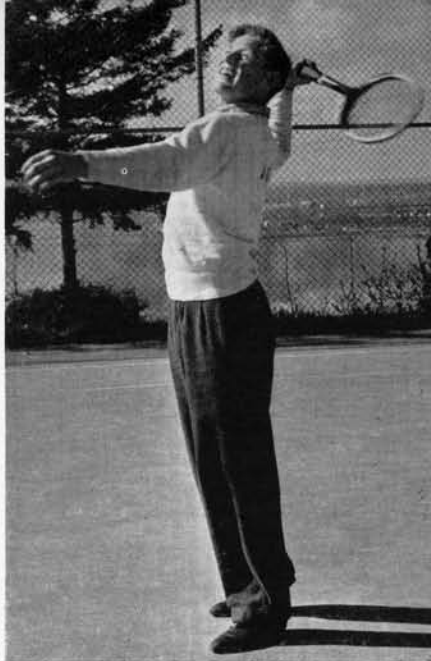
Top: Chase, Tesreau, Morris
Jacobson, Kidder

PUT'ER THERE

With victories over the University of Washington Frosh, the College of Puget Sound, and the University of British Columbia already under their belts, the Viking golf squad again gave evidence that another Tri-college title was about to be laid in their laps.

With the same team that has been the feather in Sam Carver's cap for several years, the Vikings are nearly invincible. Members who make up this committee for handing out lightning like defeats to opponents consist of Phil Kidder, Manford Chase, Pat Jacobsen, Jeff Tesreau, and Homer Morris.

B. Fowler
D. Fowler
Cooper
Harvie



MATCH MAKERS

Having won victories over the College of Puget Sound and Pacific Lutheran College in early season matches, the Viking tennis squad promises again, as in days of old, to dominate the Tri-college matches.

With Dick Fowler, the only veteran remaining from last year, Coach Lappenbusch rounded up some of Bellingham's best talent, namely, Bill Fowler, Joe Harvie, Charles Fisher and Preston Cooper to complete his squad.

An invasion into the tennis territory of Willamette, Linfield, and Pacific colleges in Oregon was the highlight of the season.

ANYBODYS' GAME

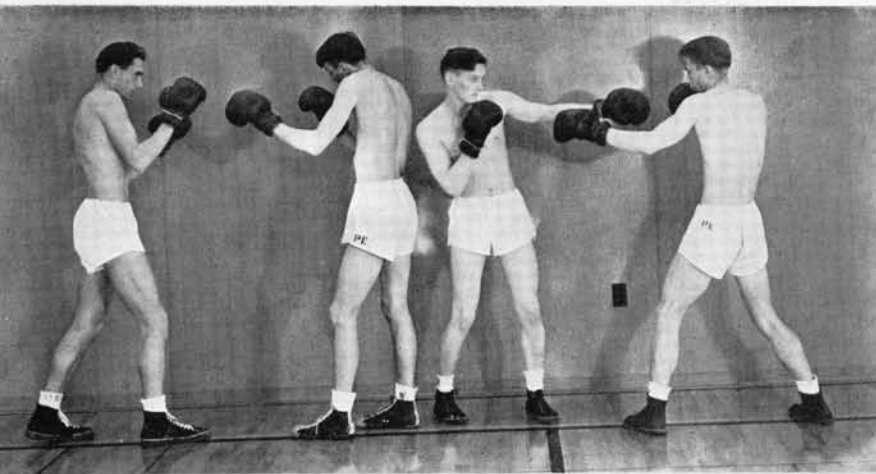
It was just a matter of Barton's all the way in the Intramural basketball league for 1937-38, with that house sponsoring a champion in both the A and B league.

Bartons proper, which might be dubbed the Barton varsity, coolly took over the A league championship. The Barton offsprings, the Penthouse boys, found it tougher going in the B league and at the end of the season were tied with the Edens Hall Kitchen Krew for first place. In the playoff the Penthouse won the championship by a score of 35-33 after three overtimes had been played.

Evenly matched teams in both leagues made interest in the intramural games much keener than it has been in years past.

Varsity baseball was scratched from the Western Washington College's major sport for 1938, so intramural baseball was substituted to take its place. In games played thus far during the season, Viking Manor seems to be the dominating team and the favorite to win the league title.

The five teams entered in the league include Turner's, Viking Manor, Barton's, Midgets, and the Independents.



BOXING

Stover, Howatt, Valenta, Anderson



SOFTBALL

Top row: Tudor, Porter, Dombroski, Kemp, Rhodes, Brownley, Holder
Sullivan, Poolman, E. Moses, Funk, Sanders, J. Moses, Iverson, Tesreau
Landon, Huter, Mickle, Ames, Hawley, White, Carlson, Popovic
Mascots Livesey, Cory



BASKETBALL
Landon, Crawford
Davis, Lupinski, Huter



Foul Shoot Winner, Tesreau

Jeff Tesreau believes in the old maxim "Look before you shoot." Putting this old saying into practice, Tesreau won the intramural foul shooting contest for the second straight year. Last year Tesreau sunk 111 out of a possible 150 shots. This year, with more competition, he cracked the twine for a new record of a 120 out of a possible 150 shots. The winner is entitled to have his name engraved on a fine trophy cup for that purpose.

With the W-club smoker as their goal, many pugilistic aspiring students were enrolled in the intramural boxing classes. The pugilists do their practice punching during the winter quarter and then see real action when W-club promoters select the best talent for the smoker card. High spot on the smoker ticket was Don Wilson's sensational battle with Johnny Kreig, whose fame is quite well known in Bellingham boxing circles.

Viking Manor trotted home with the title in the Softball intramural league. The Manor champs were perhaps the best organized team in the league. With the Intramural crown tucked away under their belts, the Manorites looked around for more competition and found it in the Campus day game with a team composed of faculty members. It was just another game for the titleholders and another victory to add to their already long list.



HOCKEY
BADMINTON
BASKETBALL
BASEBALL

VOLLEYBALL
TENNIS
SWIMMING
ARCHERY

KEEPING IN CIRCULATION

Synonymous with fun . . . Happy, laughing girls . . . sun-burned, healthy girls . . . diving into the clear waters of our shining, green-tiled swimming pool . . . swinging tennis rackets . . . tossing balls across a net . . . hiking through deep fragrant forests and testing their strength on rugged hills . . . From the field comes the thwack of hockey sticks or the thud of a baseball . . . on the greens one hears the twang of a bow . . . in the gym the sound of bouncing balls . . . swish as a basketball reaches its mark . . . or perhaps the hiss of a badminton racket . . . but always — laughter . . . and merriment . . . clear, young voices . . . full of the joy of living . . . Through it all, one feels the guiding hand of Miss Rubert and Miss Weythman . . . their efficient management . . . organizing . . . planning . . . directing . . . teaching . . . helping the girls get the full value of their sports program . . . All hail our super-sportsters . . . Helen Lundquist . . . Shirley Rogers . . . Lois Hankamp . . . Fern Allison . . . Barbara Kennedy . . . These girls were awarded white sweaters for their ability . . . their good sportsmanship . . . their active participation in many sports . . . Starting spring quarter — no awards! . . . this starting change was made by vote of the girls . . . to make our sports program one for all the girls . . . no longer do girls “work” for letters . . . they play . . . for pleasure . . . for companionship . . . for health . . . for fun!

Three cheers for our inspirational coaches . . . Miss Weythman and Miss Rupert . . . their enthusiasm and advice has added much to the popularity of women’s sportivity.

HOCKEY

Seibel, Rittenberg, Slagle, Barth, McCabe, Clancy,
Meenk, Wicklund, Hart

BADMINTON

Top row: Rittenberg, Smith, Swisher, Wainio, Hart,
Berg, Dunn
Hankamp, Thomas, Vallentgoed, Wanless, Fisher,
Townsend, McClelland, Meenk
Elliott, Barnard, Slagle, Mullen, Simmuka, Clancy

BASKETBALL

Top row: Greer, Eaton, Toler, Allen, Berg, Shay,
Slagle, Clancy, Meins, Kinsey, Mullen, Barth
Vallentgoed, Seibel, Martinson, Smith, Meenk, Mc-
Cabe, Hart, Hankamp, Fisher

BASEBALL

Top row: Funk, Slagle, Martinson, McCabe, Greer,
Meenk
Hill, Clancy, Schwartz, Fisher, Dickinson
Wainio, Barth, Armstrong, Berg, Clarke, Beatty

VOLLEYBALL

Top row: Smith, Hankamp, Fowler, Dunn, Wanless,
Allen, Toler
Greer, Slagle, Hart, Vallentgoed, Elliott, Clancy,
Simmuka, Meenk
Fisher, Davies, Rowe, Kinsey, McClelland

TENNIS

Top row: K. Dunn, Lammers, Johnson, Wainio,
McCabe, Clancy, Dickenson, Meenk, V. Clarke
Nilsen, Frederickson, M. Clarke, Holm, Laurence,
Fisher

SWIMMING

Top row: Anderson, Lundquist, K. Dunn, Scholberg,
Jones, Genter, Burnham, Johnson, Rowe, Hold-
sworth, McCabe, Armstrong
Gookins, Shay, Martinson, Sullivan, Barto, Jenkins,
Cory, Wicklund, Bundt, Barth, Rittenburg, Humphrey

ARCHERY

Fisher, Armstrong, Slagle, Wainio, Funk, Lammers,
Kaufman, Grier, Schroeder, Wakefield, Forster



KLIPSUN
Chamber of Commerce



We wish to express our sincere gratitude:

To our staff whose willingness to work and whose cooperation has helped to make our 1938 KLIPSUN a success.

To MISS ANNA ULLIN, our advisor, for her guidance.

To MISS HAZEL BREakey, who willingly gave time and advice.

To MR. CHARLES S. BEARD, MR. WILLIAM STANLEY, and the entire personnel of the Union Printing Company of Bellingham, Washington.

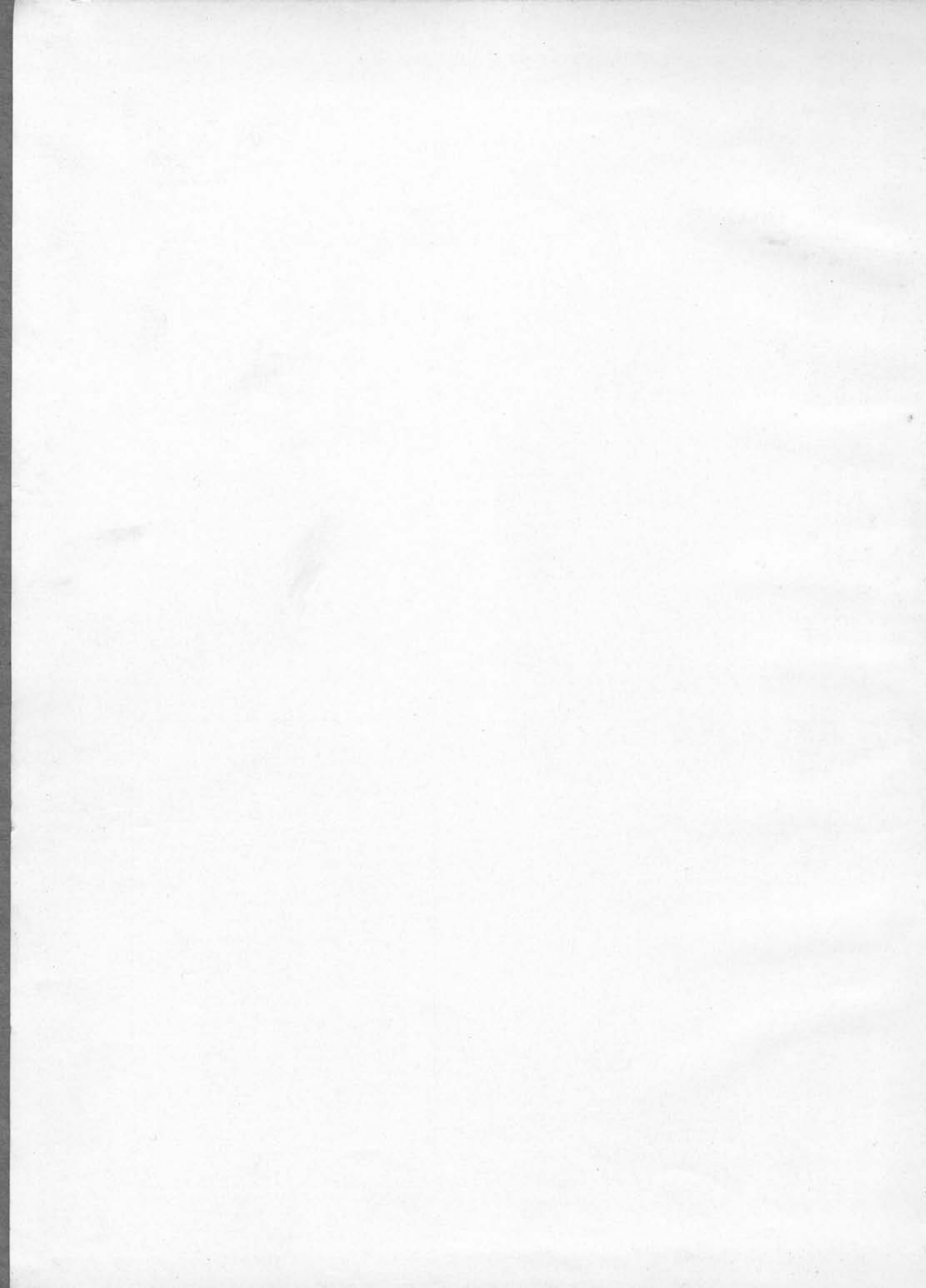
To MR. ALBERT P. SALISBURY of the Western Engraving Company of Seattle, Washington.

To MR. H. H. VINSON and RUSSELL CLIFT for their excellent photography.

To MR. HUNTOON for his scenic negatives.

ELEANOR REASONER . . . Editor

BILL FOWLER . Business Manager



The KLIP



SUN 1938

