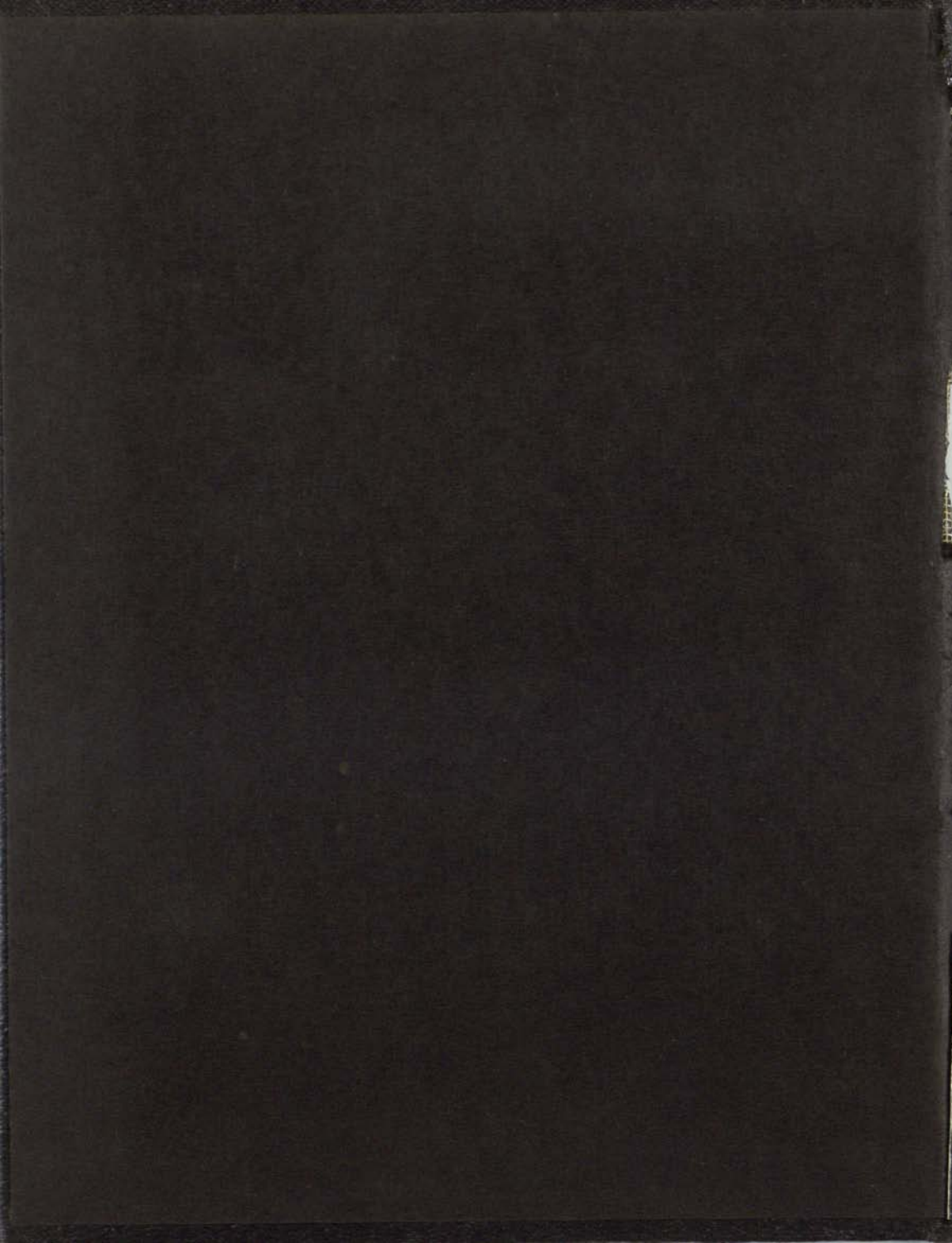


KLIPSUN  
1943

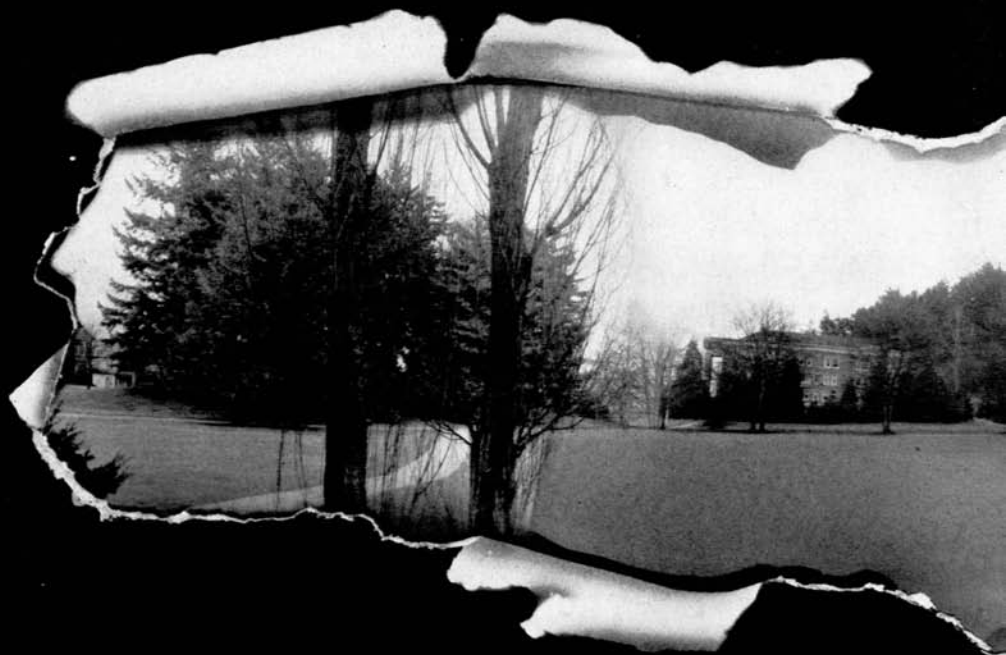


"THE WAR YEAR"

**KLIPSUN**  
**1943**

Hazel Anderson  
Editor

Joy Hatt  
Business Manager



*The* 1943



# KLIPSUN



*Published by Associated Students*

WESTERN WASHINGTON COLLEGE OF EDUCATION

BELLINGHAM, WASHINGTON

*L. A. Kibbe*

TABLE OF CONTENTS

---

Administration . . .	Page 6
Classes . . . .	Page 20
Activities . . . .	Page 30
Athletics . . . .	Page 52

# IN MEMORIAM



NORMA SWIFT HAGGARD

*Our friends . . . as we worked and played together.*

*"Those having lamps will pass them on to others."*

—PLATO



HARRY C. PHILIPPI



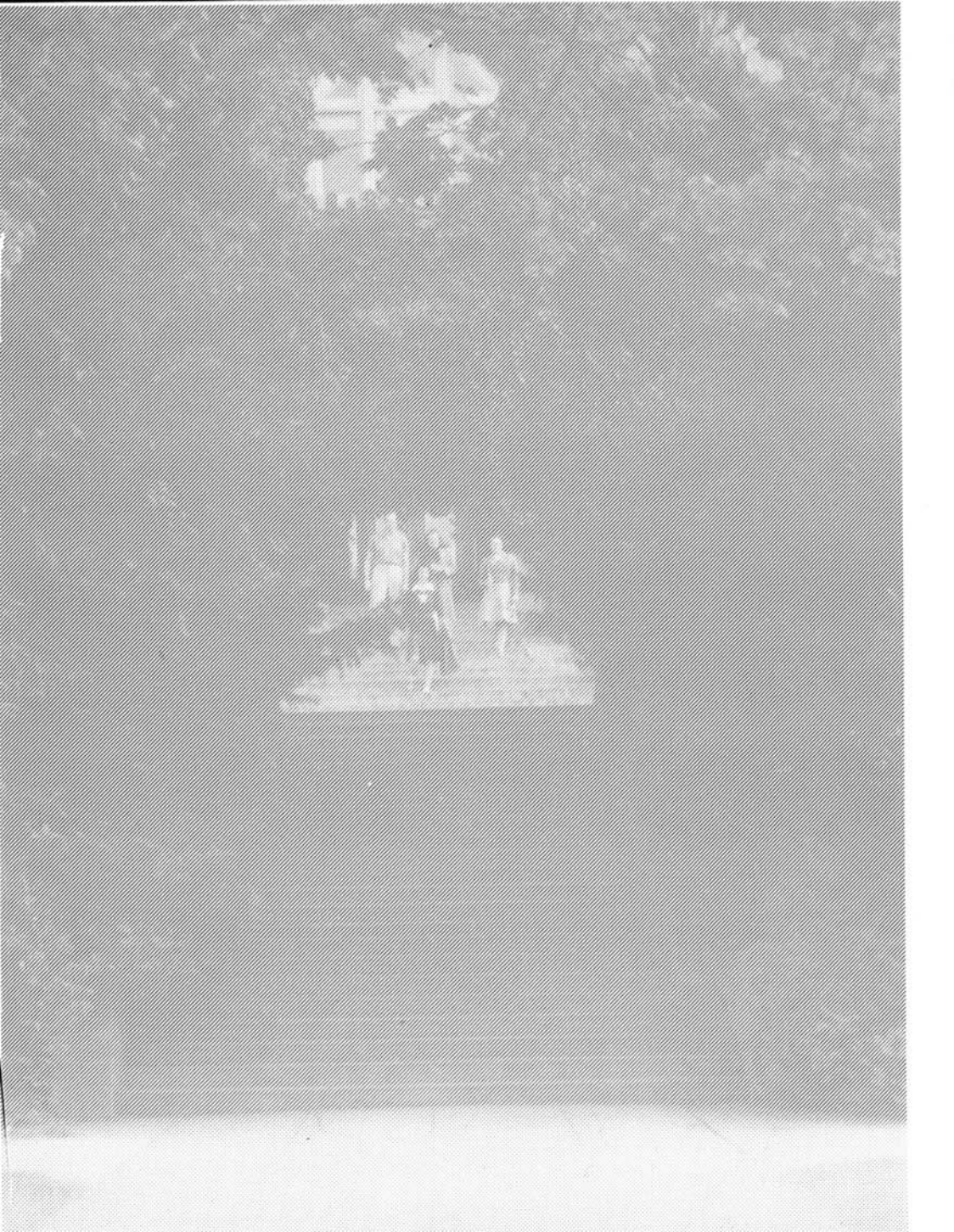
WILLIAM J. MARQUIS

*L. A. Kibbe*

## FOREWORD

1943, a year of War and a new kind of living. . . . Life under cover of darkness. A darkness that goes farther than drawn shades and subdued lights, a blackness that lingers through the sunlit hours, an unshakable cloak woven from determination and despair. If this blackness could be torn back, the light would break through, the same brightness of yesterday shining with newly awakened courage and the will to work and win. Education, building the ideals of tomorrow, would be found working for victory, its position and importance unchallenged and undimmed. THE WAR YEAR KLIPSUN has recorded for you in brief the activities and personalities of this difficult period.







## THE PRESIDENT'S MESSAGE

The Klipsun of 1943 introduces the question of wartime values. Education is regarded by democracies as having a very high priority in the scheme of things for the reason that without education democracy cannot survive. We may dim out certain institutions, but we cannot endure the consequences of neglecting our schools and colleges. Our teachers' colleges serve a peculiar purpose among higher institutions of learning in that they are the source of teachers for the lower schools which children are required by law to attend. The training of teachers cannot be postponed during a war because the growth of children cannot be postponed during that time. The Klipsun staff is to be commended for the selection of so timely a theme. We shall always refer with interest to the wartime Klipsuns.

W. W. HAGGARD, President.



TRUSTEES — This governing body consists of Chairman Dr. W. B. Kirkpatrick, Steve Saunders (resigned), and Secretary Verne Branigin.

## ADMINISTRATORS

DEAN OF WOMEN Miss Lorraine Powers, has spent an active year directing the women students in their wartime activities and working on modernization of Edens Hall.

ACTING DEAN OF MEN Herbert Hearsey has taken over the supervision of the men students during the war emergency.

REGISTRAR Dr. Merle Kuder served in his official capacity during the fall quarter. When he left for active duty with the navy his position was taken over by Dr. Arthur C. Hicks.

MISS LORRAINE POWERS



DR. MERLE KUDER



MR. HERBERT HEARSEY

# INTRODUCING THE FACULTY . . . .



**S. E. CARVER, A. M.**  
Physical Education

**CHARLES LAPPENBUSCH, A. M.**  
Physical Education



**HAZEL BREAKEY, B. S.**  
Art

**HAZEL PLYMPTON, A. M.**  
Art



**PEARL REESE**  
Secretary to the Library

**MABEL ZOE WILSON, B. L. S.**  
Librarian

**LILLIAN GEORGE, B. L. S.**  
Cataloguer

**MIRIAM B. SNOW, A. M., M. S.**  
Librarian of Children's Literature

**HERBERT R. HEARSEY,**  
M. S. L. S.  
Reference Librarian

# AN INTERESTING, ADAPTABLE, . . . .

**RUTH A. BURNET, A. B.**  
News Writing, Publications



**ETHEL CHURCH**  
Secretary to the President

**RAMON T. GEORGE, A. M.**  
Radio



**GEORGIE P. GRAGG**  
Handwriting



**JOHN ROY WILLIAMS**  
Violin



**LUCY KANGLEY, Ph. D.**  
English



# VERSATILE GROUP, WHO EVEN.....



MAY MEAD, R. N.  
College Nurse



GERTRUDE LONGLEY, A. M.  
Home Economics



CHARLOTTE RICHARDSON, A. M.  
Industrial Arts



HERBERT C. RUCKMICK, A. M.  
Industrial Arts



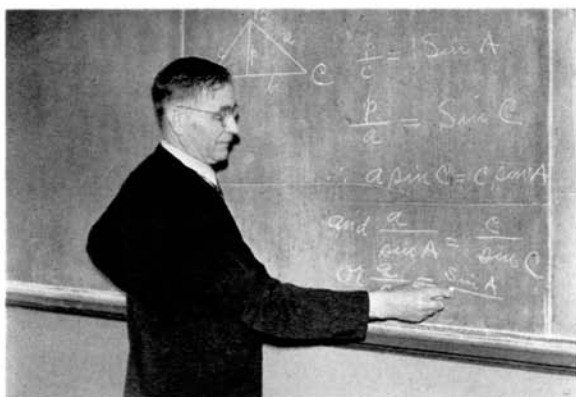
LEONA SUNDQUIST, M. S.  
Science



RUTH WEYTHMAN, A. M.  
Physical Education

# UNDER WAR CONDITIONS .....

**E. A. BOND, Ph. D.**  
Mathematics



**MAY B. LOVEGREN**  
Commercial and Extension



**ELIZABETH HOPPER, A. M.**  
Secretary, Appointment Bureau



# HAVE FOUND TIME TO GUIDE US, . . .



**EDWARD J. ARNTZEN, A. M.**  
Social Science



**MIRA E. BOOTH, A. M.**  
Public School Music



**NILS BOSON, B. M. E.**  
Public School Music

**NORA B. CUMMINS, A. M.**  
Social Science



**VIRGINIA E. HAWKE, A. M.**  
Physical Education



**ARTHUR C. HICKS, Ph. D.**  
English; Acting Registrar





# NOT ONLY IN OUR STUDIES . . . . .



**DONALD BUSHELL, A. M.**  
Public School Music



**MOYLE CEDERSTROM, Ph. D.**  
English



**LINDA COUNTRYMAN, A. M.**  
Home Economics

**VICTOR H. HOPPE, A. M.**  
Speech



**THOMAS F. HUNT, A. M.**  
Social Science



**HENRY S. HURD**  
Printing



# BUT ALSO IN OUR ACTIVITIES.....



**STEWART A. JOHNSTON,**  
Ph. D.  
Physics and Mathematics



**LYNUS A. KIBBE, A. M.**  
Education



**FRED W. KNAPMAN, M. S.**  
Chemistry

**C. C. UPSHALL, Ph. D.**  
Research and Education



**PAUL LUSTERMAN**  
Band and Orchestral Instrumental



**EDITH R. STRANGE**  
Piano



# WORKERS FOR VICTORY . . . .



RUTH E. PLATT, M. S.  
Science



CHARLES M. RICE, A. M.  
Industrial Arts



ANNA ULLIN, A. M.  
English and Foreign Languages

ALBERT VAN AVER, A. M.  
English



(NOT PICTURED)

AUBREY E. HAAN, Ph. D.  
Education

MARGARET McGEE, A. M.  
Science

NAN DYBDAHL WIIK, A. B.  
Voice

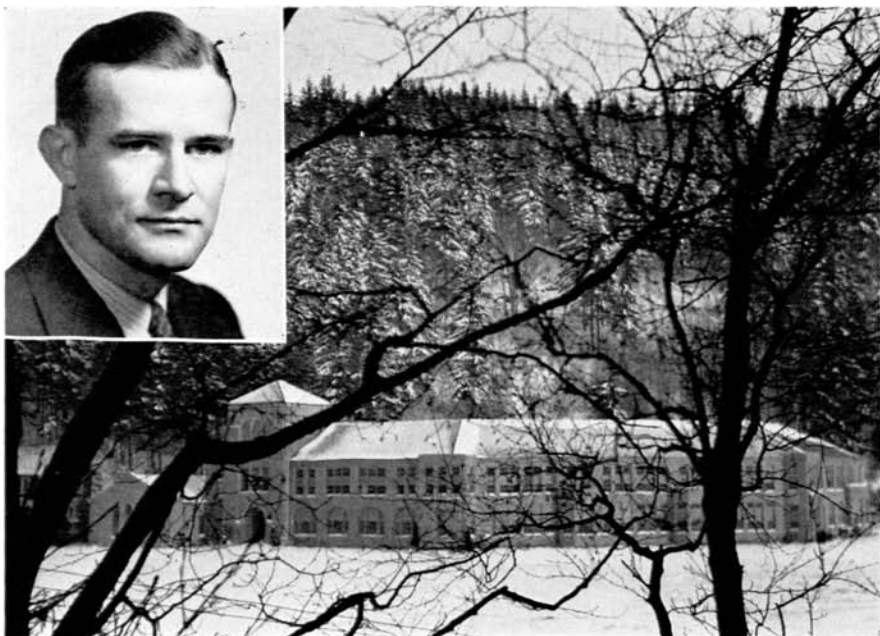
RUTH VAN PELT, A. M.  
Campus School, 7th Grade

Members of Faculty of Western Washington College of Education  
On Leave of Absence for Duration of War

DR. W. LYLE BREWER, RADAR  
LIEUT. MERLE S. KUDER, U. S. N. R.  
LIEUT. H. C. RUCKMICK, U. S. N. R.  
ALBERT VAN AVER, U. S. Army

DR. ROBERT B. HOLTMAN, U. S. Army  
LIEUT. (J. G.) ESTHER SAHLIN, Waves  
LIEUT. PAUL WOODRING, U. S. Army

# TEACHER TRAINING CENTER



Inset — DR. PAUL R. GRIM, Director of the Training School  
The new campus elementary school which has been in use since summer term of 1942

## THE CAMPUS SCHOOL

One of the brighter spots in the dimmed out campus is the Campus School building. Harmonizing with the Physical Education building and the library, this new building is characterized by a modified Romanesque architecture.

The Campus School children have helped make their school attractive by designing the stained glass windows and murals.

In use since the summer term of 1942, the Campus School was formally dedicated on Friday evening, May 7. The Hon. Arthur B. Langlie, Governor of the State of Washington, made the opening address, and there were many guests from the state in attendance.

# CAMPUS SCHOOL FACULTY

**KATHERINE CASANOVA, A. M.**  
Campus School, 1st Grade



**EDNA CHANNER, A. M.**  
Campus School, 5th Grade



**IRENE ELLIOTT, A. M.**  
Campus School, 2nd Grade



**EMMA S. ERICKSON, A. M.**  
Techniques of Teaching



**JEAN FERGUSON, A. M.**  
Campus School, 6th Grade



**VIVIAN JOHNSON, A. M.**  
Supervisor of Primary Work



**PRISCILLA KINSMAN, A. M.**  
Campus School, 3rd Grade



**RUTH MELENDY, A. M.**  
Campus School, 9th Grade



**PEARL MERRIMAN, A. M.**  
Campus School, 4th Grade



**SYNVA K. NICOL, A. M.**  
Campus School, Kindergarten



**EVELYN ODOM, A. M.**  
Supervisor, Intermediate Grades,  
City Schools



**ALAN ROSS, Ph. D.**  
Campus School, 8th Grade



**ELSIE WENDLING, A. M.**  
Supervisor, Junior High Schools,  
City Schools



(Not Pictured)  
**JESSIE STRAND, A. B.**  
Campus School, 7th Grade

## EFFICIENT OFFICE STAFF

The remainder of our office staff, after deductions were made for army and navy service, worked doubly hard to fulfill the demands of students and to solve student problems. It has been their untiring labor that has made possible a continuous systematic handling of registration, testing, and finance programs.

Top picture: Nancy Jane Smith, Secretary to Director of the Training School; Mildred Tremain, Secretary to the Dean of Women; Charlotte Hood, Secretary, Research Bureau; Myrtle Burnham, Recorder; Marjorie Kingsley, Secretary to the Registrar.

Bottom picture: Louis Earle, Co-op Manager; Nina Sternhagen, Assistant in Extension Office; Margaret MacKinnon, Accountant; Sam Buchanan, Financial Secretary.



# CLASS OFFICERS



Top picture: Junior-Senior Officers:  
Chris Bruland, vice-president;  
Dorothy Toppano, secretary-treasurer;  
Warren Beecroft, president.



Middle picture: Sophomore Officers: Bill Wilder, president; Jeannette Bright, secretary-treasurer; Don Brown, vice-president.



Bottom picture: Freshmen Officers:  
Ralph Major, president; Irene Van Dyken, secretary-treasurer; Frank Zurline, vice-president.

# SENIORS





# SENIOR ACTIVITIES

**ALVORD, KATHRYN**, Centralia  
Valkyrie, Board of Control,  
ACE

**CALBOM, NORMA**, Longview  
Homecoming Queen, Transfer Willamette  
University, Valkyrie

**ENOS, LOIS**, Seattle  
ACE

**GOLDADE, ROXANNA**, Seattle  
ACE

**KERCHEN, ROBERT**, Seattle  
Norsemen

**LOOP, HAROLD**, Edison  
Norsemen

**OLLING, SUSAN**, Bellingham  
ACE, Alkisiah, WRA

**OWENS, ELIZABETH**, Bellingham

**SHELLHAMER, BERNICE**, Sedro-Woolley  
WWCollegian Editor, Valkyrie,  
WHO'S WHO in American Colleges

**SHINTAFFER, ELAINE**, Bellingham  
WRA President, Valkyrie,  
WHO'S WHO in American Colleges

**DAHL, NORMAN**, Seattle  
"W" Club, Football

**DORCY, JOHN**, Bellingham  
WWCollegian Sports Editor,  
Norsemen

**HATCH, BILL**, Bellevue  
President Associated Students, WHO'S WHO in  
American Colleges, Scholarship Society

**HUOT, PHYLLIS**, Bellingham  
CCF

**KRAUSE, RUTH**, Everett  
Edens Hall President, 1941-42; Valkyrie  
Vice-president, WHO'S WHO in  
American Colleges

**McCAULEY, KENNETH**, Bellingham  
"W" Club, Track, Norsemen

**PRATT, MILDRED JEAN**, Ferndale  
President IRC, Scholarship Society

**PRINCE, EDWARD**, Onalaska  
Student Conductor of Band, WHO'S  
WHO in American Colleges

**SMITH, LOIS JO**, Port Angeles  
Inter-Club Council President, ACE President,  
WHO'S WHO in American Colleges

**STANGLE, NORMA**, Seattle  
Valkyrie President; WRA, General Sports  
Manager, WHO'S WHO in American Colleges

# JUNIORS



**ANDERSON, HAZEL**, Mt. Vernon  
Klipsun Editor, Valkyrie,  
Who's Who Among Students  
in American Colleges

**BARRON, DECLAN**, Stanwood  
Winner Freshman Scholarship  
Cup, Who's Who Among Stu-  
dents in American Colleges,  
Dramatics

**BEECROFT, WARREN**, Blaine  
WWCollegian Sports Editor,  
Board of Control, Intra-  
mural Sports

**BELL, DOROTHY**, Sequim  
Valkyrie vice-president, Blue  
Triangle, ACE

**BINZER, MARY ANN**,  
Bellingham

Transfer from Whitman  
College, Co-Op Board,  
Standards Committee

**BRULAND, CHRIS**,  
Bellingham

Board of Control, Junior-  
Senior vice-president

**CARR, ELDEEN**, Bellingham  
Blue Triangle President,  
AWS

**CLARK, ARTHUR**, Bellingham  
ASB President, Scholarship  
Society, Who's Who Among  
Students in American Colleges

**DARRAH, HELEN**, Winlock  
Valkyrie, ACE

**DODGE, BETTY**, Port Angeles  
Transfer from WSC,  
ACE

**ELENBAAS, BERNICE**, Lynden  
Homecoming Princess, ACE,  
WRA vice-president

**ELENBAAS, SERENA**, Lynden  
ACE

**FRASER, JEAN**, Bellingham  
Valkyrie, WRA Cabinet,  
AWS Commission

**GILMORE, ALICE**, Bellingham  
**GRAVES, BERNICE**, Lake  
Stevens

# JUNIORS

**GROGER, BETTY ANN**, Everett  
Edens Hall President, Board  
of Control, Who's Who in  
American Colleges

**GRUBB, BYRON**, Bellingham  
Norsemen Vice-President,  
"W" Club, Football

**HARTLEY, MABEL**, Aberdeen  
Transfer from Grays Harbor  
Junior College, ACE

**HATT, JOY**, Seattle  
Klipsun Business Manager,  
Valkyrie, Who's Who in  
American Colleges

**HEATON, SHIRLEY**, Bellingham  
AWS Secretary, Board of  
Control, Who's Who in  
American Colleges

**HUOT, ROBERT**, Bellingham  
Band, Orchestra, Choir

**JACOBS, DALE**, Mt. Vernon  
Football, Basketball, Choir

**JOHNSON, MARILYN**,  
Mt. Vernon  
Transfer from Mt. Vernon  
Junior College

**KLANN, JULIA**, Seattle  
Klipsun Business Manager,  
ACE, Blue Triangle

**LAUBER, RUTH**, Seattle  
Transfer from University of  
Washington, Valkyrie, ACE

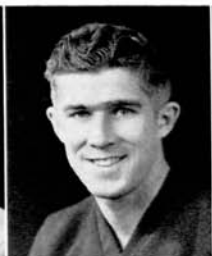
**MANHART, LUCILLE**, Sumas  
Blue Triangle, ACE

**MATTHEWS, GRACE**,  
Vancouver  
Transfer from Clark Junior  
College, ACE

**MEYERS, CATHERINE**, Everett  
CCF President, ICC Recording  
Secretary, Who's Who in  
American Colleges

**MOORE, MARY JEAN**, Seattle  
Transfer from University  
of Washington, ACE

**MORRISON, NELVIA**,  
Bellingham  
ACE, Blue Triangle





**PIRRUNG, MARY**, Bellingham  
AWS Commission Fellowship  
Chairman, ACE

**RAYMOND, LOIS**, Bellingham  
CCF

**ROBINSON, MERIETTE**,  
Pocatello, Idaho  
Transfer from University  
of Idaho

**SKILLMAN, MARY LOUISE**,  
Olympia  
CCF

**STILES, FAYE**, Sedro-Woolley  
Transfer from Mt. Vernon  
Junior College

**STROM, OLIVE**, Mt. Vernon  
Blue Triangle, ACE

**STRUZENBERG, VIVIAN**,  
Mt. Vernon

Transfer from Mt. Vernon  
Junior College

**TOPPANO, DOROTHY**, Seattle  
Junior-Senior Class Secretary,  
Blue Triangle

**TRUE, OZELLA**, Bellingham  
Valkyrie, AWS Commission

**TUCKER, MARY**, Everett  
ACE

**VAN WIERINGEN, ELLEN**,  
Mt. Vernon

ASB Vice-President, AWS  
Treasurer, Who's Who in  
American Colleges

**WATTS, ROSEMARY**,  
Kalispell, Montana  
Co-op Board Chairman,  
Campus Day Chairman,  
Who's Who in American  
Colleges

**WITTLER, JEAN**, Seattle  
ACE, Alkisiah

**WIBERG, MARLES**, Everett  
WRA

**YNGVE, DORIS**, East  
Stanwood  
ACE Secretary, Valkyrie

## JUNIOR-SENIOR CLASS

As this War-Year Klipsun goes to press, the usual thoughts that fill the minds of the graduates have taken a secondary place. Instead, one walking among these same students will hear talk of the staggering proportion of teaching jobs to the number of people to fill them; of the ever present possibility of being accepted into the WAACS, WAVES, SPARS, or MARINES; of the startling realization that they have finished college for the present and are facing the challenge of this war-torn world.

These three-year students, who had originally planned to receive their bachelor's degrees at the end of their fourth year, were certificated by the 1943 State Legislature, and granted the War Emergency Certificate. With jobs for the following year well taken care of extraordinarily early, the graduates will turn their attention to the important occasions that will mark the culmination of their three or more years of work and play at WWC—teas, baccalaureate, and GRADUATION.

# SOPHOMORES



Top picture: Calouzis, Bishop, Eines, Benjamin, Comer, Brunswig, Brown, Bezer, Franks, E. Anderson, Dennis, G. Campbell.

Middle picture: Sundberg, Radel, Rittenhouse, B. Renius, Wefer, Quimby, Smith, Suthers, Richardson, Lowery, Vossbeck, Renius.

Bottom picture: Felton, MacPherson, Major, Miller, H. Jones, Moore, Gardiner, Hatt, Kern, Oldes, N. Jones, Madden, Hull, Haley, Hallmeyer, Lee.

## SOPHOMORES

Too old to be typed as underclassmen, too young to be called upperclassmen . . . too young to discard wooden shoes and ankle socks for more dignified footwear . . . or, if boys, to walk stiffly down the halls in their best suits . . . in other words, too young to have entered into the mystic realm of student teaching . . . the Sophs are just in-betweens. But by this time they can use college terminology of S. P.'s, psych, lit, cuts and libe, and are well in the swing of things.

Under the leadership of Bill Wilder, president; Jeanette Bright, secretary-treasurer; and Don Brown, vice-president, the Sophomores have done all right by themselves, sponsoring two novel rec hours and actively participating in all school affairs.

# FRESHMEN



Top row: Alderson, Bailey, Bowsher, Bengen, Bolster.

Second row: A. Anderson, Clark, Clow, Blekkink, Bowden, Benton, Borchardt.

First row: Bellingham, Blick, Ackley, Aldrich, A. M. Anderson, Burke, Ackerman.



Top row: Hoppe, Jacobson, Johnson, Kugel, Johnston.

Second row: Kuljis, Lyttaker, Jackson, Jerstedt, Hartman, Haggard.

First row: Kendall, Juvet, Knutzen, Heath, Hanify, Hilton.



Top row: Dahl, Dawes, Elenbaas, Faller, Duranceau.

Second row: Douglass, M. Cody, Diede, H. Cody, German, Griffith.

First row: Estergreen, Driver, Graves, Eagle, Fackler, Coupe.

Hailing from all over the State of Washington, the freshman class has shown a great deal of life and class spirit during this school year. Composing the majority of the student body, the frosh, in addition to their class activities, have undertaken



# FRESHMEN

Top row: Sorenson, G. Robinson, St. Clair, Richards, Stephanson, Thompson.

Third row: Simmons, M. Smith, Randell, Persons, Siegfried, Sorgenfrie, Sunel.

Second row: Scott, Odegaard, Spr omberg, Nowogroski, Stillman, Parsells, Reilly.

First row: Mulvaney, Pickering, Schwinck, P e p p e r, Shomshak, M. Robinson, Pettit.



Top row: B. Ludwick, Marroy, Loomer.

Third row: Leonard, V. Martin, Muscutt, L. Loop, Loring, Major.

Second row: Lowman, McConnell, Lamoreux, Moles, Leuken, P. Moore, Linder, McMannama.

First row: McGinnis, Miller, Larson, E. Martin, McNair, MacDougal, McLeod.



Top row: J. Doe, Von Bargaen, Wittren, Wilkins, Verrill, VanderWilt, White.

Second row: Tretwold, Turner, Burgess, Waters, Zankick, M. Wright.

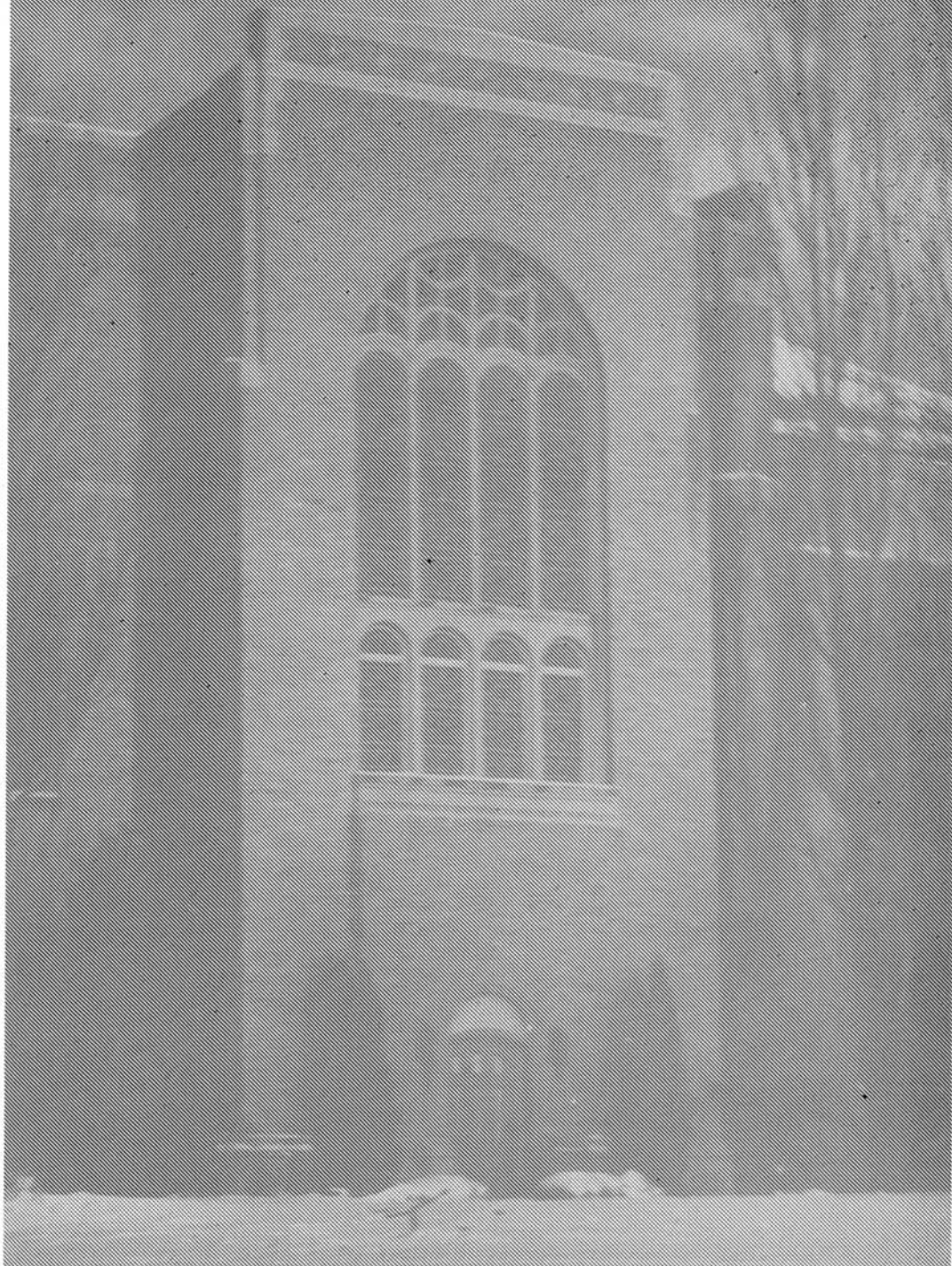
First row: Tedford, Voris, Yorkston, H. Wright, Van Dyken, D. Walton, Winders.



many duties which, in ordinary times, would have been taken over by older students. In view of their year's record of service and leadership they are to be congratulated for this, their contribution to school life in a most memorable year.

We made a new way of life out of tradition, stripped of its bright lights and combined with the exigencies of the day, and out of the dreams of a shining tomorrow.

# ORGANIZATIONS... ACTIVITIES...



# A WORKING DEMOCRACY



Board of Control Members: Betty Ann Groger, Kay Alvord, Bill Wilder, Ellen Van Wieringen



Art Clark



Ellen Van Wieringen

## ASB PRESIDENT AND VICE-PRESIDENT

Possessor of many qualities of leadership, Arthur Clark instilled his loyalty and enthusiasm for school activities into the minds of those over whom he presided, the Associated Students.

Stepping into the position vacated by Art Clark at the end of the winter quarter, Ellen Van Wieringen successfully presided over the Associated Student Body during the spring quarter.

## BOARD OF CONTROL

Aside from the handling of the student funds, the most important work of the Board of Control this year was the formation of the Student Council on War Activities. With Declan Barron as general chairman, the purpose of this group was to bring together all of the war activities on the campus. Thus unified, each of the divisions was able to accomplish more.

Included in war activities were: Red Cross War Fund; Red Cross Blood Bank; Red Cross Surgical Dressings; Sale of War Savings Stamps; Air Raid-Campus Civilian Defense; and Hospitality and Birthday Letters to Servicemen.

## THE CO-OP BOARD

The existence of the Co-op Board is a relatively recent development in the history of the school organizations. The Co-Op Board is a subsidiary of the Board of Control, though functioning independently of the Board. Composed of Mr. Louis Earle and six students, it is designed to plan the general rules, regulations and improvements for the Co-op Store.



Dr. Kangley, Mr. Carver — Clark, Hatt, Watts, Binzer, Leu

## "THE WAR YEAR" KLIPSUN PERSONNEL



Group picture: Monday at four finds the following staff members grouped around the layout table for conference: Fjellman, Groger, Moore, Klann, Voris, Cody, Van Wieringen, G. Campbell, Huhta, C. Campbell.

Editor Hazel Anderson

Business Manager Joy Hatt

KLIPSUN 1943 tells a story . . . the story of WWCE's part in the world dim-out; the story of decreasing enrollment and of an increasing Roll of Honor; of education's place in guiding the nation through this war; of students who have put the nation's welfare ahead of their own, making convalescent robes, working on filter boards, donating blood, lending money, entertaining service men and knitting Red Cross garments; of many new wartime courses . . . the story of WWCE between October and June, 1943.

KLIPSUN 1943 tells another story . . . a story hidden between the pages. This is the story of frozen flashbulbs, early deadlines, cancellation of cover orders, scarcity of student photographers, overworked professional photographers, stretched rubber glue, misspelled names . . . the story of disappointment and happiness . . . the story of "THE WAR YEAR KLIPSUN."

Top right: Gloria Campbell, Assistant Editor;  
Sheila Moore, Picture Editor.

Middle right: Alice Fjellman, Staff Writer;  
Georgina Voris, Staff Writer.

Lower right: Harold Huhta, Men's Sports Staff;  
Cale Campbell, Men's Sports Editor.

Top left: Judy Klann, Art Editor; Ellen Van  
Wieringen, Art Editor.

Lower left: Helen Cody, Women's Sports Staff;  
Betty Ann Groger, Women's Sports Editor.



Being business manager of the WWCollegian took up much of Alice's time this year.



Bernice, one of our most ambitious coeds, edited the 1942-43 WWCollegian. "Shelly" was kept busy urging the staff to get their copy in by Thursday. She has done her job well.

## WWCOLLEGIAN

WWCollegian editor, Bernice Shellhamer, worked under a handicap this year in the publishing of the paper. Her staff was made up almost entirely of inexperienced freshmen, and during the winter quarter she was doing her student teaching. But with diligent work and the able assistance of Mrs. Ruth Burnet, publications adviser, "Shelly" succeeded in welding the staff into a smooth-working unit.

A '43 addition to the WWCollegian was a "Camp Candid's" column featuring news of former students—both men and women—serving in the armed forces.

This year's projects included active support of the Student Lounge. In collaboration with the KLIPSUN staff, the gala Publications Prom and a housewarming in the new Publications Office were successfully sponsored. The annual high-school edition of the student weekly was mailed out in April to 8,000 high school seniors.



# WWCOLLEGIAN IN THE MAKING



1. Editor gives assignment to Sports Writer Hardman.
2. Reporters Radel, Turner, Cody, Scott and G. Campbell collaborate on a story.
3. Copy Editor Voris and Sports Editor Dorey check copy.
4. Cubs C. Campbell, Sinnett and Sundberg read galley proof Thursday morning.
5. Business Managers Mulvaney and Fjellman look over ads with Mrs. Burnet, publications adviser.
6. Friday noon . . . the WWCollegian.



Standing: Heaton, Pirrung,  
Nowogroski, Olson.

Seated: Van Wieringen, Olds,  
Campbell, Watts, Miss Pow-  
ers, Scott, True



Elizabeth Douglas, enthusiastic, likeable Junior from Seattle, more commonly known as "Liz," served this year as AWS president. Active in all school affairs, Elizabeth is looked to for guidance and help by the newcomers to the school and, especially, to the AWS.

## AWS

Working tirelessly to do their part toward winning the war, the Associated Women Students cooperated with and worked on various newly established committees.

After getting off to a rousing start in this especially active year with their annual Freshmen Kid Party, the AWS went on to sponsor their fall quarter informal. Monthly assemblies included informal talks by Lieutenants of both the WAVES and the WAACS. Despite the sugar shortage and food rationing, the Thursday afternoon teas were continued as usual.

War services sponsored by the AWS included the making of convalescent robes for service men; compiling of a service roster composed of the names of WWC men now in the army, navy or marines; sending WWC Collegians to WWC men in the armed forces, and conducting the Victory Book Drive.

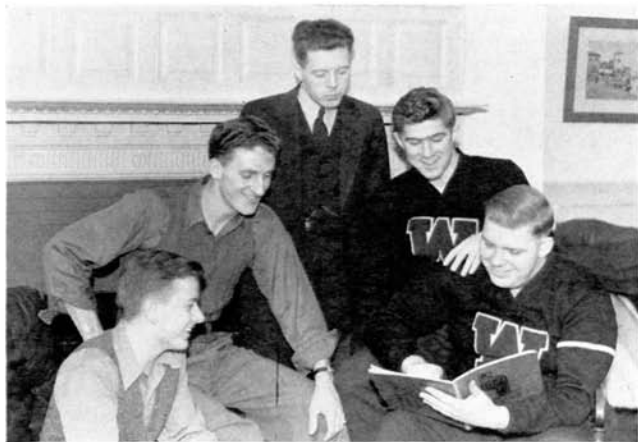
*Thirty-eight*

"Always full of pep and enthusiasm and ready to support some new school function," describes Norseman President Don Neal.



## NORSEMEN

The shortage of men this year put a damper on the Norsemen activities, but in spite of their handicap they still functioned. Headed by Don Neal, they sponsored a very successful winter informal. During the opening week of fall quarter, they helped the freshmen become acquainted by sponsoring a newcomers' party. Organized in 1939, the Norsemen became a men's service club. Membership is open to all men in school. Through this organization, the men have an added opportunity to enter into college social life.



NORSEMAN COMMISSION  
Haggard, Packard, Mr. Knapman, Grubb, Neal



Seated: Meyers, Wilder, Major, Van Wieringen, Neal, L. J. Smith, president. Standing: Pratt, C. Smith.

## INTER-CLUB COUNCIL

The Interclub Council is an organization composed of the presidents of all the active clubs and classes in the college. They meet to discuss together all problems which arise concerning their various groups. Next year's activity program has also been under consideration by the council.

## VALKYRIE

Service is the purpose of the girls who wear the royal blue sweaters with the WWC emblem. These peppy girls may be seen cheering at games and taking an active part in all school activities.

Top row: Darrah, Van Wieringen, Bright, Shintaffer, Fraser, Calbom, Alvord, Yngve.  
 Second row: Anderson, Watts, Bell, True, Heaton, L. J. Smith, Krause.  
 Third row: Gardiner, Moore, C. Smith, Olds, Stangle, president.



## W CLUB

The A-1 musclemen of WWC are typified by navy blue sweaters with a large white W. Members are men who have proven their merits in one of the major sports, football, basketball, track, tennis and golf.

Top row: Munizza, Ludwick, Grubb, Packard, Wilder, Neal.  
 Second row: Winders, Lowery, Hickenbottom, Strankman, D. Brown.  
 Bottom row: Wright, Frank, Gregg, B. Brown.



## IRC

The International Relations Club is sponsored by the Carnegie Endowment for International Peace. Members are particularly interested in current world affairs and strive to gain a better knowledge of their implications. In addition to their own activities, this year's group actively supported the newly initiated Student Forum.

Standing: Bezzer, St. Clair, Pratt, president.  
Seated: Enos, Miss Cummins, Moll, Baker.



## CCF

Promoting Christian Fellowship among the students on the campus is the aim of the CCF. At various times during the year, guest speakers are featured by the club. Occasionally a homey fireside gathering is held, the regular meetings being during the noon hour.

Brown, Raymond, Haug, Jackson, Meyers, Jones, Huot, Skillman. At piano, Pedersen.



## ALKISIAH

Having the distinction of being the women's club of earliest origin on the campus, Alkisiah has continued to be of service during this war year. Their activities in connection with the Red Cross have been particularly outstanding.

Back row: Spromberg, Bright, Wefer, Kosche, Kern, Artley, Brunswig, Burke, Anderson, Wittler, Richardson, Smith, Heaton, N. Jones.  
Front row: Olds, C. Smith, Hanify, Benjamin, Sundberg, Moll.



## ACE

Representing the primary teachers on the campus, the Association for Childhood Education has completed its fourth successful year. Under the able leadership of Lois Jo Smith and advisers, the club has presented many helpful and interesting meetings this year. The toy display at Christmas and the mock interview with Mr. C. Paine Shangle were part of its very interesting program.



Top picture: Standing: Stiles, Olling, Van Wieringen, Heaton, Pirrung. Seated: Goldade, Morrison, Carr, Hartley, Anderson, Von Euw, S. Elenbaas.



Bottom picture: Front row: Klann, Struzenburg, Calbom, Richards, Smith, Watts, Fraser, Strom. Back row: Yngve, Burke, Alvord, Kosche, Wittler, Moore, Nowogroski, Enos, Miss Nicol.



Pratt, Huot, Kosche, Strom

## SCHOLARSHIP SOCIETY

Receiving a grade point average of not less than 3.5 for three consecutive quarters is required for membership in the Scholarship Society. This is the only honorary organization on the campus of WWC. Concentrated study and seriousness of purpose are characteristics found in each of its members.

## BLUE TRIANGLE (Not Pictured)

The Blue Triangle Club is affiliated with the YWCA, and carries on activities similar to that of its sister organization. During the year, members help with orthopedic work in the local hospital; sponsor a school-wide drive for funds for the World Student Service Fund; and initiate such activities as seem in keeping with the times.

## MALE ANIMAL

Division of Drama players gave "The Male Animal" during the fall quarter as the first play of the year. This comedy, presented penthouse style, was a take-off on college life and the college professor.

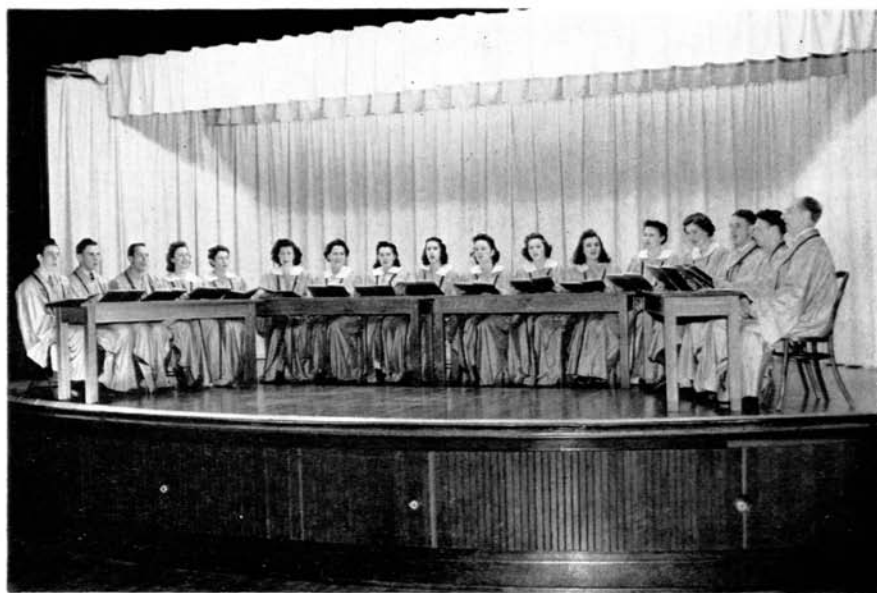
"The Male Animal" centers around the life of a college professor, Tommy Turner, who gets into trouble when he announces that he intends to read, to his English class, a letter written by Bartolomeo Vanzetti, a socialist. Tommy is asked to resign his position, but before he does this he reads the letter. The letter is found to be quite harmless. Ed Keller, head of the board of trustees, forgives Tommy and he keeps his job.

Tommy also has domestic troubles when Whirling Joe Ferguson, ex-football player, almost runs away with Tommy's young wife.

The cast was composed of Declan Barron, Jeannette Bright, Gloria Campbell, Elizabeth Douglas, Blaine Madden, Ethel Martinson, Don Neal, Ruthe Olds, Ed Prince, Mike Smith, Robert Stuart, and Jack Thompson.







Burger, Elenbaas, Jacobs, Odegaard, Eagle, Mulvaney, Gilmore, Brown, Pirrung, Blekkink, McLeod, Anderson, Pederson, Wittler, Packard, Smith, Mr. Boson

## MADIGRAL SINGERS

Because of the insufficient number of men students left, during the winter quarter Nils Boson adopted another form of singing for his A Capella Choir. His group is now called the Madigral Singers. Traditionally, the Madigrals were around seven in number and sang while standing around a table, with very little instrumental accompaniment.

This technique of singing was introduced into the United States 15 years ago from the old world. It had its first beginnings in the Netherlands, moving to Italy and then finally to England in Queen Elizabeth's regime.

These Madigral Singers, under the direction of Nils Boson, have participated in college assemblies.



Betty Ann Groger, WWC junior, murmurs something pleasing during one of the weekly radio dramas.

## RADIO 120

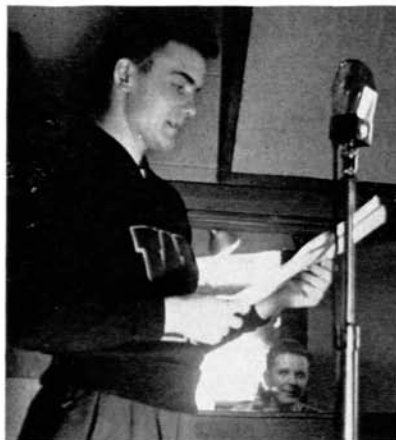
"On mike; stand by," were Ramon T. George's instructions heard each Tuesday afternoon by the members of the Radio 120 group as they prepared to go on the air over the local station with their "College News Week In Review" program.

Practical work was given in radio advertising, writing advertising copy, reading techniques, voice recording, and the operation of the control board.

Broadcasts were made from the remote control studios located on the campus.

Into the ether goes another Tuesday afternoon newscast, with Ed Hickenbottom at the mike, while Harley Huhta points "your turn".

Harley Huhta learns about the mechanics of a radio control board.



# HOMECOMING



Betty Ann Groger, junior princess; Dawn Griffith, freshmen princess; Norma Calbon, Queen Sigrid V; Hazel Anderson, junior princess; Aileen Gardiner, sophomore princess

This year's Homecoming was truly a war conscious one, as rationed gas and tires limited the attendance of grads. However, under the leadership of General Chairman Don Neal the student body carried through the week-end's activities from the traditional pep rally to the gala Saturday night's ball in the big gym. Dim-out regulations cancelled the freshmen bonfire. A feature of the Saturday luncheon was the introduction of the football team, which later Saturday afternoon played its best game of the season against EWC.

The crowning of lovely Norma Calbon as Queen Sigrid V climaxed the colorful Friday night assembly.

The football team forms an aisle for the Queen and her court just before the kick-off.



## PUBLICATIONS PROM

Many changes were made in the traditional Publications Promenade this year. Because of lack of funds, the Publications had to charge admission to the only all-school informal of the year, which had been free of charge in the past.

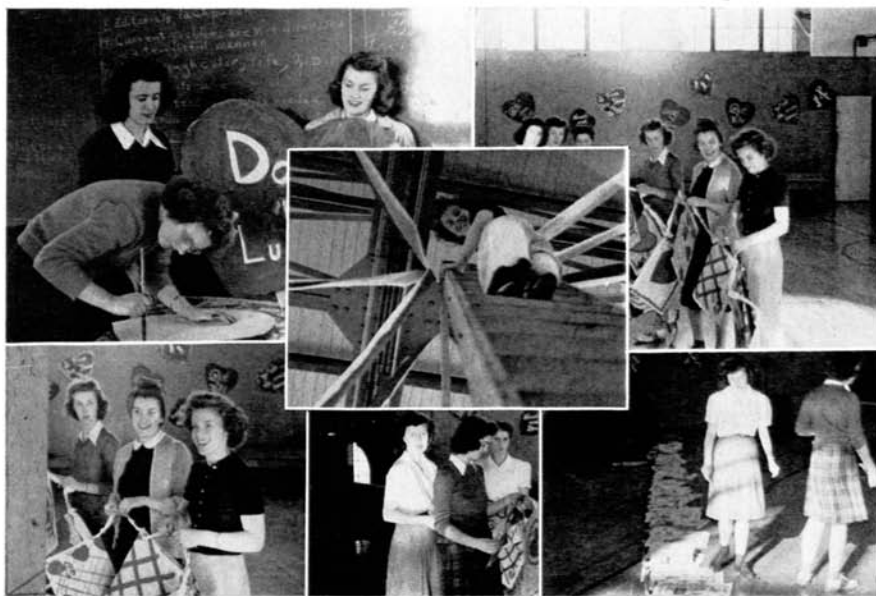
The basketball team chose nineteen campus girls, heretofore chosen by the clubs, to enter the princess contest. From these nineteen girls were selected eleven of the most photogenic candidates to compete for the princess' crown. Preliminary judges were Mrs. L. A. Nygard, local artist, and Ben Sefrit, Herald photographer.

Finally the Coast Guard chose the one most photogenic girl of WWC, Sheila Moore, to resign over the valentine decorated prom. She was crowned at intermission by Sergeant Felix Montes, former WWColegian business manager.

Approximately 200 couples, among them publications staff members from the county high schools, danced to the music of George Hankins' orchestra and chuckled at the linked names on the heart be-decked walls.

The ten Prom committees functioned smoothly, despite wartime restrictions, under the direction of Hazel Anderson, Klipsun editor; Bernice Shellhammer, WWColegian editor, and Mrs. Ruth Burnet, publications adviser.

The WWColegian and Klipsun staffs decorate for the prom



Left: MARY CODY

Right: HELEN CODY



MARGARET MUELLER  
NORMA STANGLE  
MABEL ODEGAARDE

PAT SCOTT  
DAWN GRIFFITH  
GLORIA CAMPBELL

PAT GILBERT

MARILYN TURNER

SHEILA MOORE, 1943 Publications Prom Princess

# CAMPUS DAY



Life went off the campus Wednesday, May 12, when the faithful few in gay picnic attire carried on the annual pilgrimage to the Lakewood mecca, under the leadership of Wade Haggard and Ruth Krause.

Enthusiasm was evidenced in the days preceding the event. The venerable walls this year looked down not only upon harassed males, but also upon unhappy females. The manpower shortage had inspired a new ultimatum. Women, students and faculty alike, were ordered to appear with hair in pigtailed and lips pale and lovely, a la Mother Nature. The Kangaroo Court convened Monday before the holiday to assess fines and inflict punishment on the disobedient. Ticket sales were launched with a trumpet fanfare. A topnotch assembly was assured by having skit try-outs in advance and choosing the best skits for presentation in the assembly Wednesday morning.

In good humor after the big assembly of the day, the liberated student body climbed into such conveyances as could be gathered together in the face of the rubber and gasoline rationing. The order of the day at the lake included a Bond Salmon Bake, and the determination of the longest, fanciest and most honest attempts at a beard. Still going strong after a day of active play, the picnickers returned to the College to participate in the baseball games.

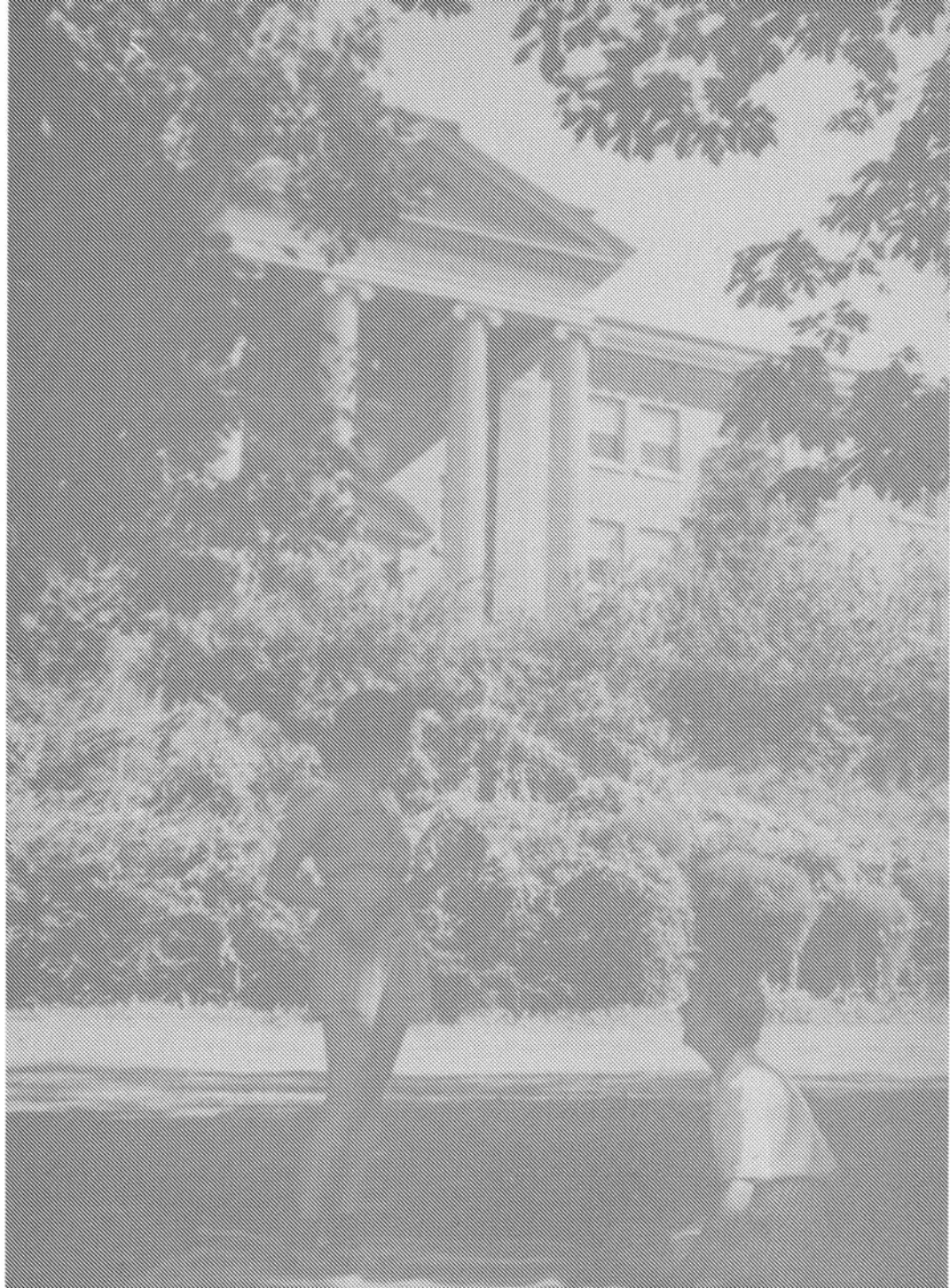
Climaxing the day's celebration, the Campus Day Dance, with an orchestra and all the trimmings, was held in the Student Lounge.

Just before the battle . . . Attention, please! and now . . . Disputed victory . . . Weight and see.  
Water sprite . . . Follow the simple directions . . . Muscle maids . . . A sheltered life.  
Roll 'er over . . . The Winner . . . No coaching from the sidelines, please.

Play became a means to an end—  
physical fitness the order of the  
day. But we didn't forget it  
takes more than muscle to build  
morale.

# ATHLETICS... CANDIDS...







## INSPIRATIONAL AWARD WINNER . . . LES SMITH

He played hard; he gave all he had in every game. His ability and spirit were outstanding. And because he was the driving force behind the Vikings all season, Les was the logical choice for winner of the Inspirational Award.

## VARSITY FOOTBALL

The WWC Vikings won one game and tied two out of seven as one of the poorest seasons in many years developed. The Norse team ended up in last place in the WINCO league.





Brown



Cummins



Denis



Dodge



Doud



Frisk



Grubb



Hoff

With only six returning veterans, Lappenbusch was forced to rely on newcomers and freshmen. The six regulars answering Lappy's call were Byron Grubb, Don Packard, Les Smith, Norm Dahl, Don Neal, and Captain Larry Munizza.



COACH LAPPENBUSCH

In the first game of the '42 season, WWC ran up against EWC, a faster team, and lost 6 to 0, as Jack Perrault ran through the whole Viking team for 60 yards.

The homecoming game was a complete reversal of early season form, for the Vikings, sparked by little Les Winders, ran the CWC eleven all over the field as they fought bitterly to a 0 to 0 tie.

It took the Vikings all season to get the fire to bring victory to their fold when they completely smashed the CPS Loggers 13 to 0 amid rain and mud. It was Captain Larry Munizza who led the Norsemen when, after making a try for point with two minutes left to play, he intercepted a pass and ran 55 yards for the final score of his college career.



Captain Munizza

## RECORD OF SCORE

WWC .....	0	EWC .....	6
WWC .....	0	Portland U .....	26
WWC .....	6	St. Martin's .....	9
WWC .....	0	CWC .....	33
WWC .....	0	CWC .....	0
WWC .....	7	PLC .....	7
WWC .....	13	CPS .....	0



Iraola



Murphy



Muscutt



Packard



Schroeder



Whetstine



Wright



Zurline



Top row: Ludwick, Richardson, Lowery, Gregg, Muscutt.  
 Inset: Tense moments during the Fort Casey game.  
 Bottom row: Bezzer, Van Sinderen, Munizza, Winders, Wittren.

## VARSITY BASKETBALL

The Washington Intercollegiate Conference proved to be one of the strongest of the league's history. The Vikings, although winning seven of eight of their home games, fell down on their annual eastern jaunt when they lost all four contests. The final league standings found WWC tied with Ellensburg for second place.

Coach Charles Lappenbusch had one of the strongest starting fives in the conference in Wittren, Gregg, Lowery, Ludwick and Strankman, but because of the lack of sufficient reserve power he found it impossible to give the boys the rest they needed. Such was the case at Cheney and also at Ellensburg when they lost two tough games, 60-55 at Cheney and 41-39 at Ellensburg.

Pre-season competition was hard to find, but Lappy got the strongest available. The Vikings did well in the first game when they were turned back by Alpine Dairy, AAU champs, 41-30.

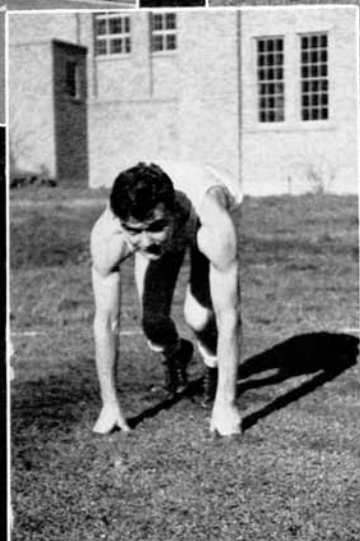
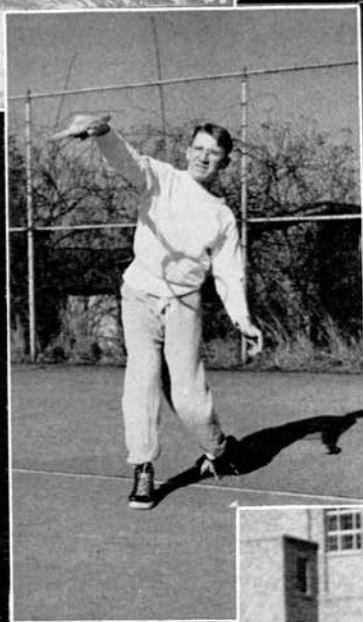
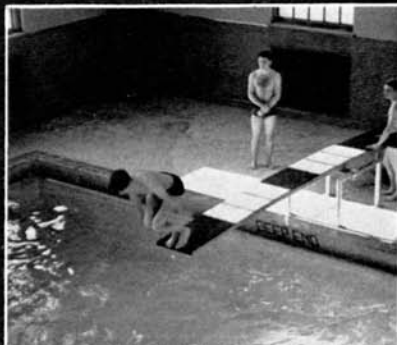
Eastern won the title for the second consecutive year, losing only two league games, one to the Vikings and the other to Ellensburg.

During the season three men were lost to the service from the varsity squad, Frank Zurline and Ed Muscutt to the Army, and Nathan Richardson to the Army Air Corps.

## OUR RECORD

WWC .....	30	Alpine Dairy .....	41 xx
WWC .....	37	RCAF .....	42 xx
WWC .....	50	PLC .....	37
WWC .....	46	PCL .....	30
WWC .....	51	CWC .....	46
WWC .....	49	CWC .....	45
WWC .....	40	EWC .....	60
WWC .....	55	EWC .....	60 x
WWC .....	40	CWC .....	54
WWC .....	39	CWC .....	41
WWC .....	68	Fort Casey .....	24 xx
WWC .....	50	SMC .....	44
WWC .....	47	SMC .....	54
WWC .....	46	SMC .....	45
WWC .....	35	SMC .....	34
WWC .....	67	PLC .....	40
WWC .....	62	PLC .....	48
WWC .....	41	EWC .....	44
WWC .....	44	EWC .....	32

# SPRING SPORTS - WAR EDITION





Elaine Shintaffer

Elaine Shintaffer, active in all of the college women's activities and a general all-around "good sport," is an inspiration to the organization of which she is president, Women's Recreation Association.

## WRA

Elaine Shintaffer has been president of the Women's Recreation Association this year. Assisting her with her duties is the WRA cabinet, which is composed of the chairmen of standing committees and the managers of the different sports. Information about the WRA and the various sports is displayed on the bulletin

### BASEBALL

### HOCKEY





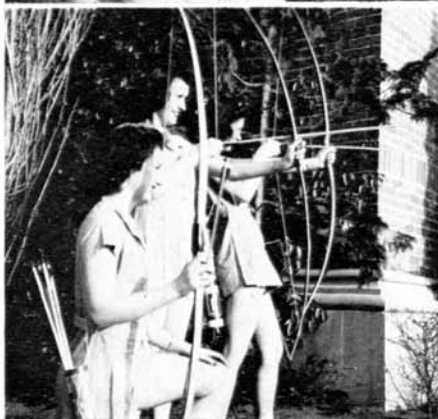
board in the main hall. The swimming club, Blue Barnacles, is sponsored by the WRA. Fall quarter sports include volleyball and hockey. The winter and spring sports are: basketball, badminton, tennis, archery, swimming and golf. During the fall quarter, an initiation tea was held for new members. At this time the traditional signing of the membership scroll took place. Other highlights of the WRA were the women's kid party held in the fall, and the annual WRA carnival held in connection with a rec hour during the winter quarter. The regular WRA play day was cancelled this year because of situations arising from the war.



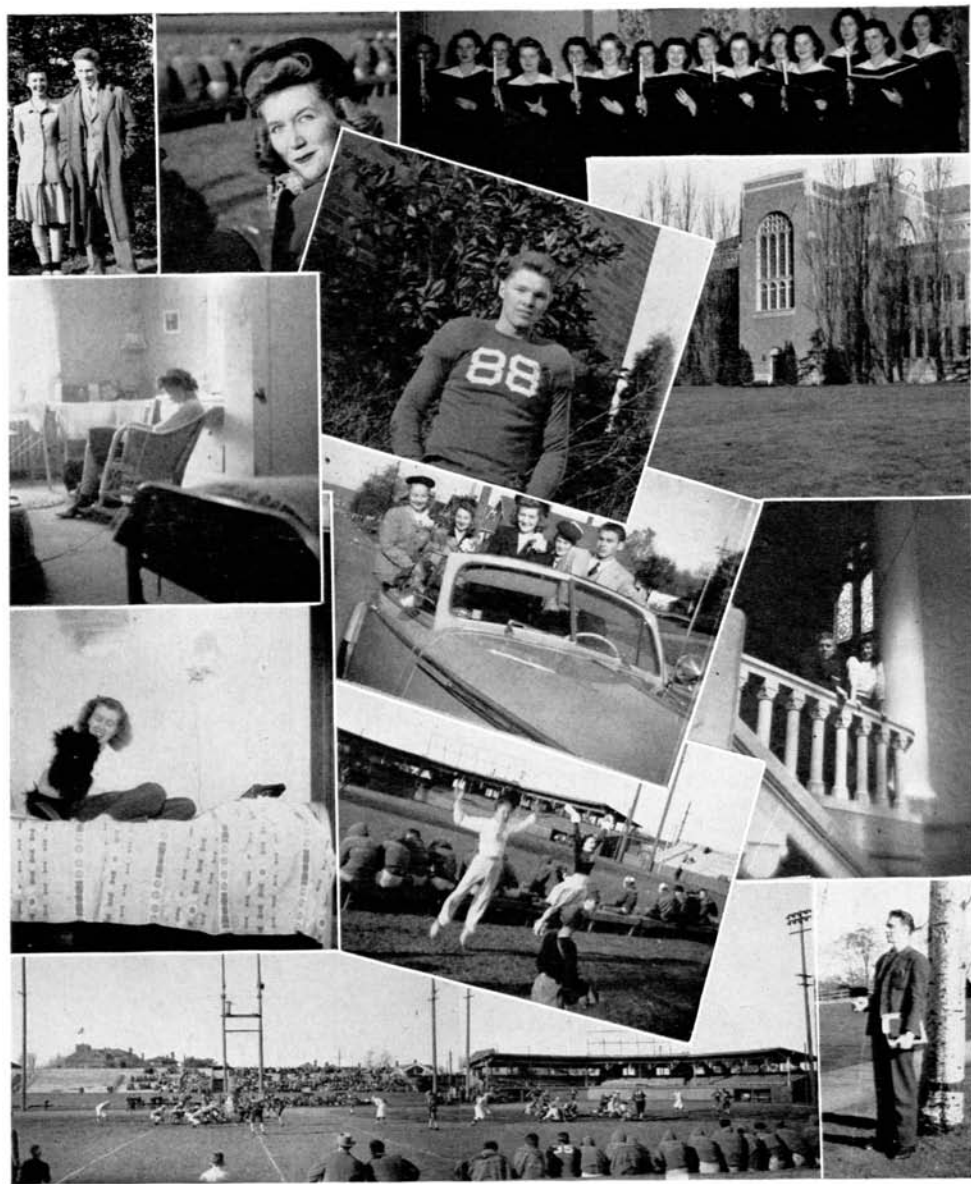
**WRA CABINET**  
 Standing: Yngve, Eines, Anderson, Brunswig.  
 Seated: Radel, Richards, Bartlett, Shintaffer,  
 Elenbaas, Wefer, Olds.

**TENNIS**

**ARCHERY**



# CARRYING ON AS USUAL IN SPITE



Look pretty, please . . . Queens must eat . . . Candlelight carollers . . . Smith studies . . . Ike's hero.  
Servants' entrance . . . Prexy and pooch . . . Homecoming highlights . . . Come on  
up . . . Jumping Jacks . . . 15-49-63-27 Hike! . . . Don Juan

# OF WAR AND WEATHER . . . WINTER.



'Sno school . . . Watts clicks . . . Bend down, sister . . . Opportunists . . . Stretching Stamp No 17.  
 Smiling Through . . . We miss our men . . . Slips don't count.  
 High street speedway . . . Stop! You—

# INTO SPRING...LOOKING TO TOMORROW



Pretty pussies . . . Pin-up girl . . . Oh, dear . . . Hits the spot . . . Remember the night.  
 Picnic a la Post . . . V . . . — . . . It CAN happen here . . . Cam and Ike laugh  
 it off . . . Penthouse . . . Far above the Bay's Blue Waters . . . Hiker's Paradise.  
 Trail Tunes . . . Sunday afternoon.

## WWCE's 1943 Contribution to the Armed Services

Allen, Doug	Frisbie, Dale L.	Muscutt, E. D.
Bailey, Doug	Frisk, Les L.	Mock, Richard
Baklund, Bob	Garst, Eugene	Munroe, Douglas D.
Beecroft, Warren	Grubb, Byron H.	Murphy, Bill
Bezer, Anthony	Hartman, Gerald	Packard, Don
Blondheim, Elmer	Heath, Robert E.	Potter, Oliver
Bowsher, Robert	Heyer, Warren	Rairdon, William R.
Brown, Donald	Hickenbottom, Ed	Renius, Vern H.
Brown, William J.	Hickok, Gene	Richardson, Nathan G.
Burger, August	Hoff, Frank	Richards, Rowland
Burgess, Ralph	Iraola, Frank P.	Sarvis, Bob E.
Clark, John E.	Jacobs, H. Dale	Schwinck, Lorvey H.
Cooper, Clifford R.	Johnson, Delbert	Shay, Robert
Cummings, Clarence	Johnson, Clifford	Siemons, Frank B.
Curran, Claude	Johnston, Edgar	Smith, Les
Dahl, Arne	Kugel, Gilbert	Thompson, Douglas V.
Denis, Richard	Lee, Robert	Thompson, John S.
Derfler, Eugene L.	Lindell, Ernest V.	Tokas, Harry M.
Dodge, Ronald L.	Long, Don C.	Vine, Warren S.
Dorcy, Arthur	Loomer, Dale M.	Walton, Don
Dorcy, John M.	Lowery, Norman	Whetstine, Harold
Doud, Lowell	Madden, Blaine	Wilder, William
Fish, Charles I.	Major, Ralph	Wright, Howard
Fitch, Charles	Marroy, Edgar	Zurline, Frank
Follis, William T.	McLaren, Lawrence	
Frank, Warren P.	Miller, Allan O.	

## TOPICAL INDEX

ACTIVITIES .....	30	MUSIC .....	45
ADMINISTRATORS .....	6	NORSEMEN .....	39
ALKISIAH .....	41	OFFICE STAFF .....	18
ASSOCIATION FOR CHILDHOOD EDUCATION .....	42	ORGANIZATIONS .....	30
ASSOCIATED WOMEN STUDENTS .....	38	PRESIDENT'S MESSAGE .....	6
ATHLETICS .....	52	PUBLICATIONS PROM .....	48
BASKETBALL .....	57	RADIO .....	46
BLUE TRIANGLE .....	43	REGISTRAR .....	7
CAMPUS SCHOOL .....	16	SCHOLARSHIP SOCIETY .....	43
CLASS OFFICERS .....	19	SENIORS .....	20
COLLEGE CHRISTIAN FELLOWSHIP .....	41	SERVICE MEN'S ROSTER .....	65
DEANS .....	7	SOPHOMORES .....	26
DRAMA .....	44	STUDENT CO-OP .....	33
FACULTY .....	8	STUDENT GOVERNMENT .....	32
FOOTBALL .....	54	STUDENT TEACHING .....	16
FRESHMEN .....	28	TENNIS .....	59
GOLF .....	59	TRACK .....	59
HOMECOMING .....	47	TRUSTEES .....	6
INDEX .....	67	VALKYRIE .....	40
INTERNATIONAL RELATIONS CLUB .....	41	W CLUB .....	40
JUNIORS .....	22	WWCOLLEGIAN .....	36
KLIPSUN .....	34	WOMEN'S RECREATION ASSOCIATION .....	60

# PERSONAL INDEX

## A

Ackerman, Crystal	28, 63
Ackley, Joyce	28
Alderson, Edward	28
Aldrich, Mary	28
Alvord, Kathryn	20, 32, 40, 42, 62, 64
Anderson, Alice Marie	28, 41
Anderson, Archie	28
Anderson, Eleanor	26, 61
Anderson, Hazel	22, 34, 40, 42, 47
Anderson, Shirley	45
Arntzen, Edward J.	12
Artley, Phyllis	41

## B

Bailey, Douglas	28
Baker, Thomas	41
Barron, Declan	22, 44
Bartlett, Norma	61
Beecroft, Warren	19, 22
Bell, Dorothy	22, 40, 64
Bellingham, Patricia	28
Bengen, Robert	28
Benjamin, June	26, 41
Benton, Peggy	28
Bezer, Anthony	26, 41, 57
Binzer, Mary Ann	22, 33
Bishop, Doris	26
Blekkink, Rachel	28, 45, 62
Blick, Maxine	28
Bolster, Jim	28
Bond, E. A.	11
Booth, Mira E.	12
Borhardt, Mildred Jean	28, 64
Boson, Nils	12, 45
Bowden, Iris	28
Bowsher, Robert	28
Brandstrom, Mary Jean	62
Branigan, Verne	6
Breakey, Hazel	8
Bright, Jeannette	19, 40, 41, 64
Brown, Don	19, 26, 40, 62
Brown, Hazel	41, 45
Brown, William	55
Bruland, Chris	19, 22
Brunswig, Betty	26, 41, 61
Buchanan, Sam	18
Burgess, Ralph	29, 62
Burke, Mary Louise	28, 41, 42
Burnet, Ruth A.	9, 37
Burnham, Myrtle	18
Bushell, Donald	13

## C

Calbom, Norma	20, 40, 42, 47, 62, 64
Calouzis, Georgia	26
Campbell, Cale	34, 35, 37
Campbell, Gloria	26, 34, 35, 37, 48, 49, 64
Carr, Eldeen	22, 42
Carver, S. E.	8, 33
Casanova, Katherine	17
Cederstrom, Moyle	13
Channer, Edna	17
Church, Ethel	9
Clark, Arthur	22, 28, 32, 33
Clow, Harriett	28, 62
Cody, Helen	28, 34, 35, 37, 48, 49
Cody, Mary	28, 49, 64
Comer, Jack	26
Countryman, Linda	13
Coupe, Ysabel	28
Cummins, Nora B.	12, 41
Cummings, Clarence	55

## D

Dahl, Arne	20
Dahl, Norman	20
Darrah, Helen	22, 40
Dawes, Merlin	28
Denis, Richard	26, 55
Diede, Chris	28
Dodge, Betty	22
Dodge, Ronald	55
Dorcy, John	20, 37
Douglas, Elizabeth	38, 44
Douglass, Nancy	28, 62
Driver, Georgia	28
Duranceau, Jack	28

## E

Eagle, Godeane	28, 45
Earle, Louise	18
Eines, Marie	26, 61
Elenbaas, Bernice	22, 61
Elenbaas, Renier	28, 45
Elenbaas, Serena	22, 42
Elliott, Irene	17
Enos, Lois	20, 41, 42
Erickson, Emma S.	17
Estergreen, Louise	28, 62

# PERSONAL INDEX

## F

Fackler, Ruth	28
Faller, William	28
Felton, Norm	26
Ferguson, Jean	17
Fjellman, Alice	34, 35, 37
Frank, Warren	40, 59
Franks, Roy	26
Fraser, Jean	22, 40, 42
Frisk, Les	55

## G

Gardiner, Aileen	26, 40, 47, 62
George, Lillian	8
George, Ramon T.	9
German, Mary	28
Gilbert, Pat	49
Gilmore, Alice	22, 45
Goldade, Roxanna	20
Gragg, Georgia	9
Graves, Bernice	22
Graves, Martha June	28
Gregg, Gale	40, 57
Griffith, Dawn	28, 47, 49, 62
Grim, Paul R.	16
Groger, Betty Ann—	
23, 32, 34, 35, 46, 47, 48, 62	
Grubb, Byron	23, 39, 40, 55, 62

## H

Haggard, Wade	28, 39
Haggard, William Wade	6
Haley, Mary	26
Hallmeyer, Elinor	26
Hanify, Carol	28, 41
Hardman, Harold	37, 64
Hartly, Mabel	23, 42
Hartman, Gerald	28
Hatch, Bill	20
Hatt, Betty	26, 43
Hatt, Joy	23, 33, 34
Haug, Mabel	41
Hawke, Virginia	12, 63
Hearsey, Herbert	7, 8
Heath, Robert	28
Heaton, Shirley	23, 38, 40, 41, 42, 64
Hickenbottom, Ed	40, 46, 59, 63
Hicks, Arthur C.	12
Hilton, Lois	28
Hoff, Frank	54
Hood, Charlotte	18
Hoppe, Russell	28

Hoppe, Victor H.	13
Hopper, Elizabeth	11
Huhta, Harold	34, 35, 46
Hull, Mary Lou	26, 62
Hunt, Thomas F.	13
Huot, Phyllis	20, 40
Huot, Robert	23
Hurd, Henry S.	13

## I

Iraola, Frank	56
---------------	----

## J

Jackson, Edyth	28, 41
Jacobs, Dale	23, 45
Jacobson, Robert	28
Jerstedt, Imogene	28
Johnson, Marilyn	23, 62
Johnson, Delbert E.	28
Johnson, Vivian	17
Johnston, Edgar	28
Johnston, Stewart A.	14
Jones, Hazel	26, 41
Jones, Nada	26, 41
Juvet, Lorraine	28

## K

Kangley, Lucy	9, 33
Kendall, Gordon Nell	28
Kerchen, Robert	20
Kern, Minerva	26, 41
Kibbe, Lynus A.	14
Kingsley, Marjorie	18
Kinsman, Priscilla	17
Kirkpatrick, W. B.	6
Klann, Julia	23, 34, 35, 42
Knapman, Fred W.	14, 39
Kosche, Ruth	41, 42, 43
Krause, Ruth	20, 40, 62
Kuder, Merle	7
Kugel, Gilbert	28, 42
Kuljis, George	28

## L

Lamoreaux, Corinne	29
Lappenbusch, Charles	8, 55
Larson, Edith	29, 62
Lauber, Ruth	23
Lee, Robert	26
Leonard, Joe	29
Leu, Don	33



# PERSONAL INDEX

## L (CONTINUED)

Linder, Doris	29
Longley, Gertrude	10
Loomer, Mahlon	29
Loop, Harold	20
Loop, Lloyd	29, 62
Loring, James	29
Lovegren, May B.	11
Lowery, Norman	26, 40, 57
Lowman, Polly	29
Ludwick, Ernest	29, 40, 57
Leuken, Myrtle	29
Lusterman, Paul	14
Lyttaker, Marian	28

## M

McCauley, Kenneth	20
McConnell, Lorraine	29
MacDougal, Mary Jane	29
McGinnis, Ruth	29
MacKinnon, Margaret	18
McLeod, Mary Ann	29, 45
McMannama, Zella	29
McNair, Donna	29
McPherson, Warren	26
Madden, Blaine	26
Major, Ralph	19, 26, 29, 40
Manhart, Lucille	23
Marroy, Edgar	29
Martin, Vincent	29
Martinson, Ethyl	29
Matthews, Grace	23
Mead, May	10
Melendy, Ruth	17
Merriman, Pearl	17
Meyers, Catherine	23, 40, 41
Miller, Doris	29
Miller, Dorothy	26, 62
Moles, Betty	29, 62
Moll, Marjorie	41
Moore, Mary Jean	23, 42, 62, 63
Moore, Pat	29
Moore, Sheila	26, 34, 35, 40, 49
Morrison, Nelvia	23, 42
Mueller, Margaret	49
Mulvaney, Jean Elaine	29, 37, 45, 48
Munizza, Lawrence	40, 56, 57
Murphy, William	56
Muscutt, Edward	29, 56

## N

Neal, Don	40, 39
Nicol, Synva K.	17, 42
Nowogroski, Zosia	29, 38, 42, 63

## O

Odegaard, Mabel	29, 45, 49
Odom, Evelyn	17
Olds, Ruthe	26, 38, 40, 41, 61, 62, 64
Olling, Susan	20, 42
Olson, Shirley	38, 63
Owens, Elizabeth	20

## P

Packard, Don	39, 40, 45, 56
Parsells, Shirley	29
Pederson, Alice Sue	41, 45
Pepper, Carmen	29
Persons, Melissa	29, 63
Pettit, Ruth	29
Pickering, Lorraine	29
Pirrung, Mary	24, 38, 42, 45, 64
Platt, Ruth E.	15
Plympton, Hazel	8
Powers, Lorraine	7, 38, 63
Pratt, Mildred Jean	20, 40, 41, 43
Prince, Edward	20

## Q

Quimby, Mary Alice	26
--------------------	----

## R

Radcl, Irene	26, 37, 48, 61, 64
Randell, Nan	29
Raymond, Lois	24, 41
Reese, Pearl	8
Reilly, Art	29
Renius, Bernice	26
Renius, Vern	26
Rice, Charles M.	15
Richards, Margaret	41, 42, 61
Richards, Roland	29
Richardson, Charlotte	10
Richardson, Nathan	26, 57
Rittenhouse, Betty	26
Robinson, Gordon	29
Robinson, Margaret	29
Robinson, Meriette	24
Ross, Alan	17
Rucknick, Herbert	10

# PERSONAL INDEX

## S

St. Clair, Floyd	29, 41
Saunders, Steve	6
Schroeder, Kenneth	56
Schwinch, Lorvey	29
Scott, Pat	29, 37, 38, 48, 49, 64
Seigfried, Margaret	29
Shellhamer, Bernice	20, 36, 37
Shintaffer, Elaine	20, 40, 60, 61
Shomshak, June	29
Simmons, Franklin	29
Sinnett, Marjorie	37
Skillman, Mary Louise	24, 41
Smith, Cheryl	26, 40, 41, 64
Smith, John	29, 45, 62
Smith, Les	54
Smith, Lois Jo	20, 40, 41, 42, 62
Smith, Nancy Jane	18
Snow, Miriam B.	8
Sorenson, Roger	29
Sorgenfrie, Virginia	29
Spromberg, Mildred	29, 41
Stangle, Norma	20, 40, 49
Stephanson, Roy	29
Sternhagen, Nina	18
Stiles, Faye	24, 42, 63
Stillman, Ivaloe	29, 48
Strange, Edith R.	14
Strankman, Fred	40
Strom, Olive	24, 42, 43
Struzenberg, Vivian	24, 42
Sundberg, Glennis	26, 37, 41, 62
Sundquist, Leona	10
Sunel, Marjorie	29
Suthers, Maribel	26

## T

Tedford, Doris	29
Thompson, Douglas	29
Toppano, Dorothy	19, 24
Tremain, Mildred	18
Tretwold, Bill	29
True, Ozella	24, 38, 40
Tucker, Mary	24
Turner, Marilyn	29, 37, 49

## U

Ullin, Anna	15
Upshall, C. C.	14

## V

Van Aver, Albert	15
Vander Wilt, William	29
Van Dyken, Irene	19, 29
Van Sinderen, Sidney	57
Van Wieringen, Ellen—	24, 32, 35, 38, 40, 42, 62
Verrill, Richard	29
Von Bargen, Henry	29
Voris, Georgina	29, 34, 35, 37, 48
Vossbeck, Bob	26

## W

Walton, Doris	29
Waters, Dorothea	29, 64
Watts, Rosemary	24, 33, 38, 40, 42, 63, 64
Wefel, Harriett	26, 41, 61
Wendling, Elsie	17
Weythman, Ruth	10
White, Walter	29
Wiberg, Marles	24
Wilder, Bill	19, 32, 40, 59
Wilkins, Sheldon	29
Williams, John	9
Wilson, Mabel Zoe	8
Winders, Leslie	29, 40, 57, 63
Wittler, Jean	24, 41, 42, 45, 62
Wittren, Richard	29, 57
Wright, Howard	29, 40, 56
Wright, Morrie	29

## Y

Yngve, Doris	24, 40, 42, 61, 64
Yorkston, Betty	29

## Z

Zankich, Vincella	29
Zurline, Frank	19, 56

... AUTOGRAPHS ...

**WE WISH TO EXPRESS OUR  
APPRECIATION TO:**

MR. ALBERT P. SALISBURY of the Western Engraving Company, Seattle, Washington.

MR. CHARLES BEARD and MR. WILLIAM STANLEY of the Union Printing Company, Bellingham, Washington.

MR. J. W. SANDISON, KEITH STUDIO, HERBERT RUCKMICK, CHET ULLIN, THE BELLINGHAM HERALD, SUMNER DENNON, GERALD HARTMAN for photography.

MRS. RUTH A. BURNET for her guidance as adviser.

MR. KASPER AAGAARD, MR. WAYNE ENSIGN and MR. GEORGE SPERRY for their work on our new office.

THE 1943 KLIPSUN STAFF for their cooperation in the production of this annual.

HAZEL ANDERSON, Editor

JOY HATT, Business Manager.

