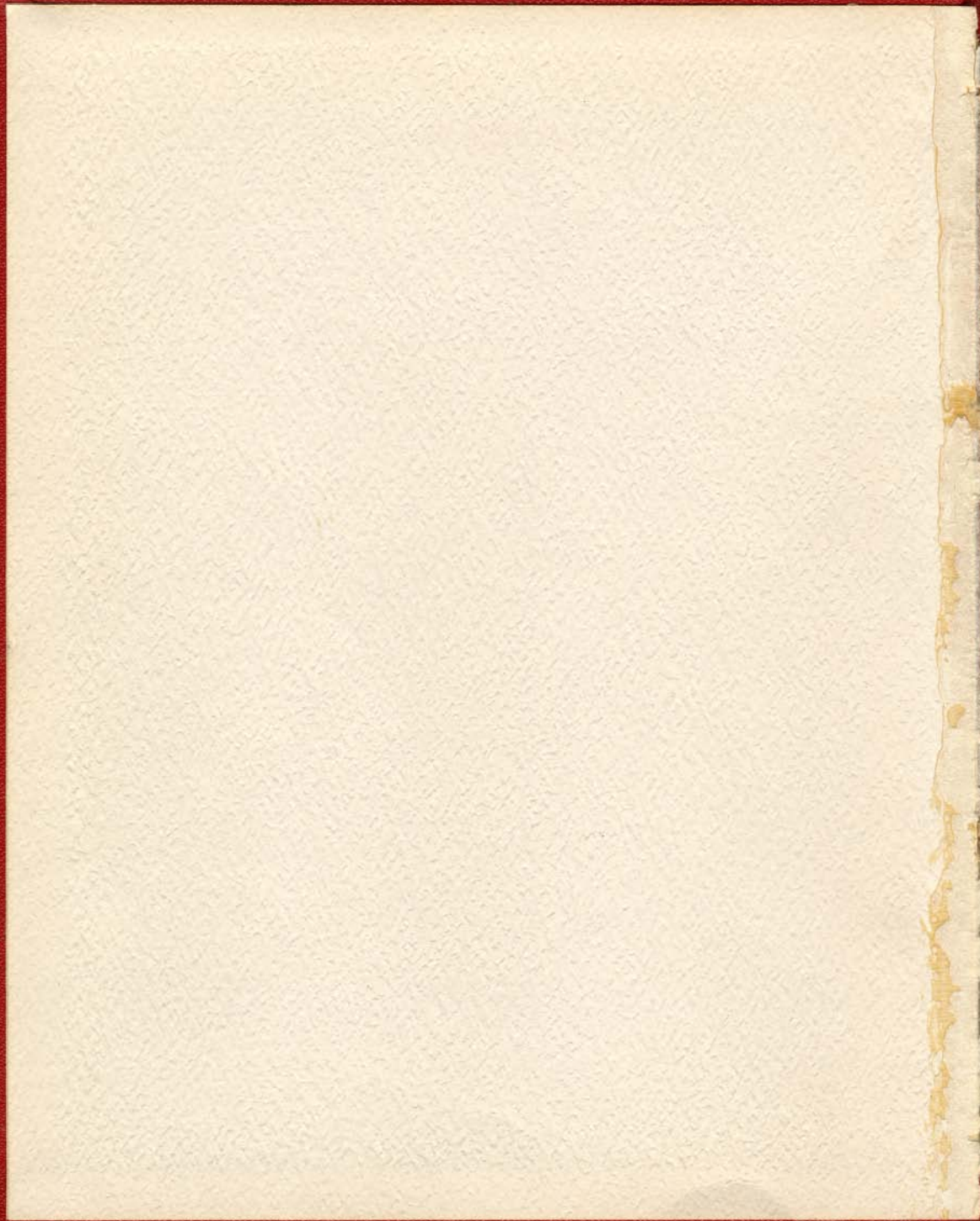
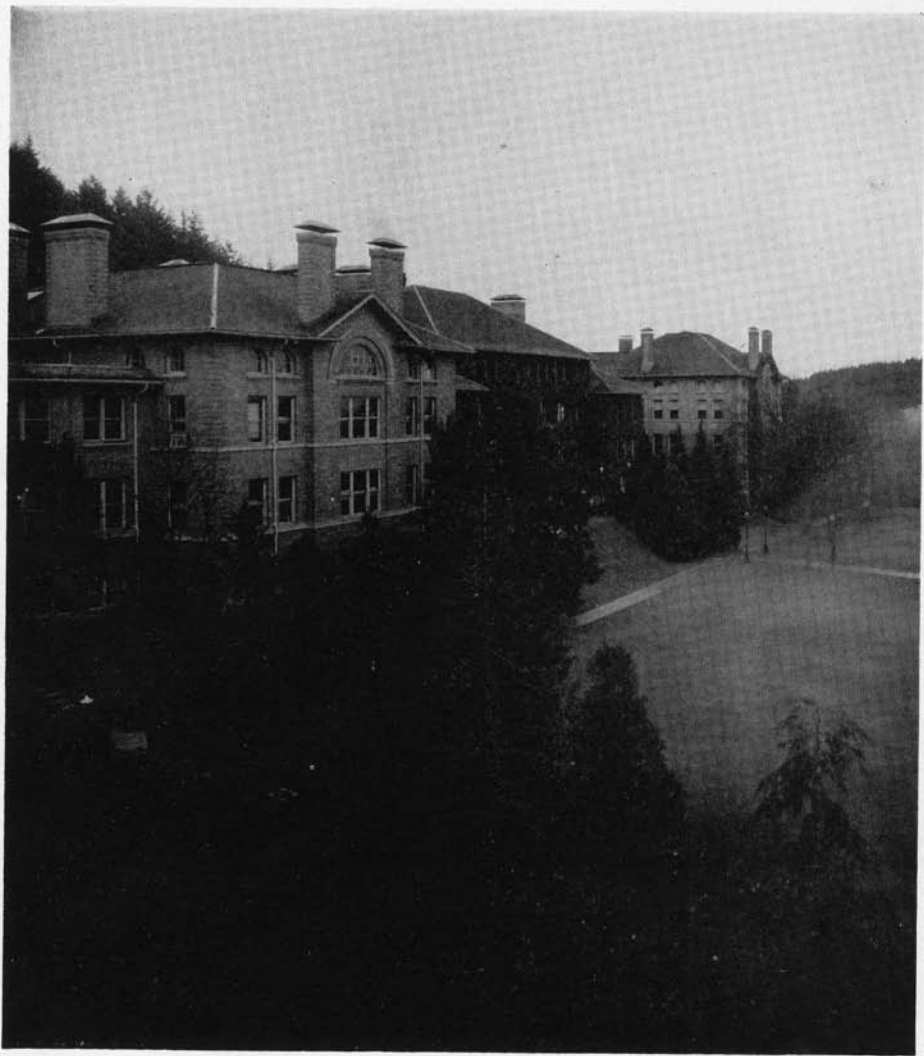


1944

КЛИПСУН







OUR FACTORY . . .

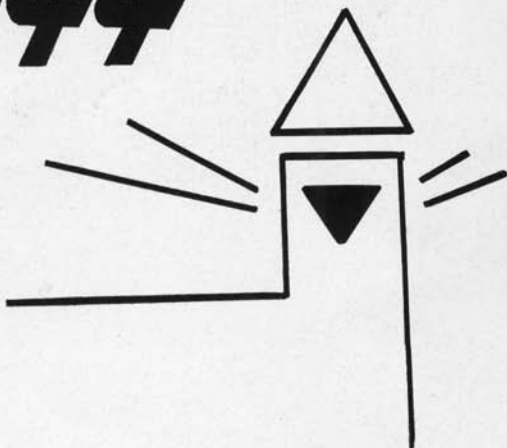
H. BREakey



The

ALPSUN

1944



Published by Associated Students

Western Washington College of Education
Bellingham, Washington

LORRAINE McCONNELL — Editor

HARRIETT CLOW — Business Manager

FOREWORD

During this, our second war year, many drastic changes have taken place in our college. Prominent among these are decreased enrollment, small enrollment of men, and stringent curtailment of pre-war activities. Rules have had to be altered to fit the times, because only a flexible system can survive such heavy blows to its foundations. One thing which hasn't changed is our standard of education; our plant is still producing top-flight teachers and is fulfilling its mission on the home front battlefield.

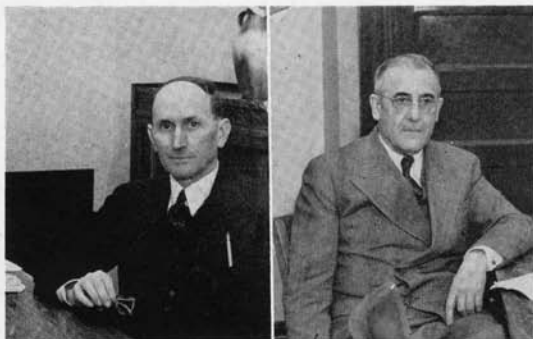
TABLE OF CONTENTS

PERSONNEL . . .	Page 7
UNIONS	Page 33
SWING SHIFT . .	Page 47

THE PRESIDENT'S MESSAGE

A lieutenant commander serving as director of instructor training of the United States Navy told a group of educators recently that he regarded our educational system as the most important factor in the success of our war effort. This tribute to our schools is unmistakably significant. Some may say that he had reference to our high schools, technical schools, or the engineering colleges of our universities, but no one can say that such schools could exist without the elementary and junior high schools, for which our College prepares teachers.

Since the beginning of the war, our College has provided an extended program of lower division education and a full program of professional training. Our service flag speaks with profound eloquence. The College is therefore contributing to victory. The Klipsun staff could not have chosen a more fitting theme this year than working for victory. We shall read the 1944 wartime Klipsun with interest and pleasure.—W. W. Haggard, President.



TRUSTEES

Left: VERN BRANIGIN, Secretary
Right: DR. W. D. KIRKPATRICK, Chairman

WASHINGTON

WESTERN

COLLEGE



1 9 4 4

PERSONNEL...

OUR BOSSES AND FOREMEN . . .



EDWARD J. ARNTZEN, M. A.
Social Sciences



ELIAS A. BOND, Ph. D.
Mathematics



MIRA E. BOOTH, M. A.
Music



NILS BOSON, B. A.
Music Education, Music



HAZEL M. BREAKEY, B. A.
Art



RUTH A. BURNET, B. A.
Newsriting, Publications



DONALD G. BUSHELL, M. A.
Music

WITHOUT THEIR GUIDANCE . . .

S. E. CARVER, M. A.
Physical Education

M. F. CEDERSTROM, Ph. D.
English

ORPHA CHRISTENSON, M. A.
Physical Education

ETHEL CHURCH
Secretary to the President

LINDA COUNTRYMAN, M. A.
Home Economics

NORA B. CUMMINS, M. A.
Social Sciences

LILLIAN M. GEORGE, B. L. S.
Cataloguer, Library

WANETA S. CATEY, M. A.
Remedial Education
(Not Pictured)



OUR DEFENSE PLANT COULD NOT BE . . .



GEORGIA P. GRAGG
Handwriting



VIRGINIA E. HAWKE, M. A.
Physical Education



HERBERT R. HEARSEY, M. L. S.
Reference Librarian



ARTHUR C. HICKS, Ph. D.
English and Acting Registrar



VICTOR H. HOPPE, M. A.
Speech



ELIZABETH M. HOPPER, M. A.
Secretary, Appointment Bureau



THOMAS F. HUNT, M. A.
Geography

WE THANK THEM FOR CHEERFULLY . . .

HENRY S. HURD
Printing

LUCY KANGLEY, Ph. D.
English

LYNUS A. KIBBE, M. A.
Education

FRED W. KNAPMAN, M. S.
Science

CHARLES F. LAPPENBUSCH, M. A.
Physical Education

GERTRUDE LONGLEY, M. A.
Home Economics

MAY G. LOVEGREN
Shorthand, Typing, Extension



WORKING LONG HOURS AND HELPING . .



PAUL LUSTERMAN
Band and Orchestral Instruments



MAY MEAD, R. N.
Nurse



RUTH E. PLATT, M. S.
Science



HAZEL JEAN PLYMPTON, M. A.
Art



LORRAINE POWERS, M. A.
Dean of Women



CHARLES M. RICE, M. A.
Industrial Arts



CHARLOTTE B. RICHARDSON, M.A.
Industrial Arts

MARGARET A. McGEE, M. A., R. N.
Science, Nurse
(Not Pictured)

WITH A HEAVIER LOAD OF ACTIVITIES.

MIRIAM B. SNOW, M. S.
Campus School Librarian and
Instructor in Library Science

EDITH R. STRANGE
Piano

LEONA SUNDQUIST, M. S.
Science

ANNA ULLIN, M. A.
Foreign Languages and English

NAN DYBDAHL WIIK, B. A.
Voice

JOHN ROY WILLIAMS
Violin

MABEL ZOE WILSON, B. L. S.
Librarian



TEACHER TRAINING DIVISION



The campus elementary school, the newest building on our campus, where future teachers get practical experience.

DR. PAUL R. GRIM, Director of the
Training School

THE CAMPUS SCHOOL

In its second year of operation, the new Campus Elementary School proved to be one of the brightest spots on the campus.

Large numbers of student and degree teachers took their training this year, aided by the modern facilities offered by the training school.

An ever increasing number of requests from parents is being received asking admittance for their children into the school and educators throughout the state have made frequent visits to examine the system employed there.

KATHERINE M. CASANOVA, M. A.
First Grade

EDNA CHANNER, M. A.
Fifth Grade

IRENE M. ELLIOTT, M. A.
Second Grade



EMMA S. ERICKSON, M. A.
Techniques of Teaching, Field Service

JEAN FERGUSON, M. A.
Sixth Grade

LESLIE HUNT, M. A.
Ninth Grade



VIVIAN JOHNSON, M. A.
Primary Supervisor, Field Service

PRISCILLA M. KINSMAN, M. A.
Third Grade

PEARL MERRIMAN, M. A.
Fourth Grade



SYNVA K. NICOL, M. A.
Pre-Primary

EVELYN ODOM, M. A.
Seventh Grade

JEAN WAGNER, M. A.
Eighth Grade



ELSIE WENDLING, M. A.
Techniques of Teaching



OFFICE STAFF



Top Picture: Back Row: Helen Williams, Assistant in Extension Department; Vida Greenleaf, Secretary, Research Bureau; Marjorie Kingsley, Secretary to the Registrar; Mildred E. Tremain, Secretary to the Dean of Women; Nancy Jane Smith, Secretary to the Director of Training; Myrtle Burnham, Recorder.
Bottom Picture: Margaret Mackinnon, Accountant; Doris Buchanan, Assistant in Business Office; Samuel Buchanan, Financial Secretary.
Not Pictured: Lois Hankamp, Secretary, and Pearl Reese, Secretary to the Librarian.

Members of the Faculty of Western Washington College of Education On Leave of Absence for Duration of the War

W. LYLE BREWER, Ph. D., Tennessee Eastman Company, Knoxville, Tennessee.
ENSIGN RAMON T. GEORGE, U. S. Naval Reserve.
LIEUTENANT ROBERT B. HOLTMAN, Army of the United States.
LIEUTENANT MERLE S. KUDER, U. S. Naval Reserve.
LIEUTENANT ALAN ROSS, U. S. Naval Reserve.
LIEUTENANT HERBERT C. RUCKMICK, U. S. Naval Reserve.
LEONA SUNDQUIST, Civil Aeronautics Authority, Stanford University.
CHARLES C. UPSHALL, Ph. D., Tennessee Eastman Company, Knoxville, Tennessee.
ALBERT VAN AVER, M. A., University of Montana.
RUTH WEYTHMAN, M. A., Overseas Service, American Red Cross.
CAPTAIN PAUL WOODRING, Army of the United States.

JUNIOR-SENIOR CLASS

To be a Junior now—is practically up in the ranks with being a Senior—for war conditions—brought a shortage of teachers—with all its other shortages—and has provided a three-year emergency teaching certificate that is sending studes out—to teach at the end of their Junior year. So with this new plan decreasing the number who return—to be Seniors—and with the interests—of the two classes—closer than ever—they have been combined this year—into a Junior-Senior class—led by Senior Walt Baker—who supervises many other campus activities besides those of his class. And the new combined class has two other junior officers—Doris Bishop—vice-president—and Ruth Kosche—secretary—all advised by Dr. Lucy Kangley. Now the biggest responsibility falling on the shoulders of the upperclassmen each year—is managing the Homecoming week-end—this year handled by class prexy Walt Baker—and Jeannette Bright. They changed it to "Home Front" week-end—and planned as interesting a program as pre-war days boasted—with a ship launching as a new bit to spice up interest—and the traditional banquet and dance—with Whidby Navy men to even up WWC's man-shortage on the dance floor—and with lovely Marie Eines reigning at the dance—wearing the crown of Queen Sigrid VI—attended by Princesses Cheryl Smith—and Jeannette Bright—both juniors. The two classes were about even up with honors—Shirley Olsen headed the interclub council—the juniors sent Ruthe Olds off to the WAVES—the Seniors cheered Jim Gilday to California to train as third baseman for the Seattle Rainier baseball team—after he had reinforced Lappy's basketball team here all winter—the team that rated many salutes from state sportcasters—and the team that was led by two Seniors—one Ernie Ludwick—and one Larry Munizza. Now this class is preparing to teach—and preparing for graduation—and they will follow tradition in June—as they receive their diplomas—and their degrees—and walk down the cement walk—past the hollow squares that began in 1915 and stopping—at an empty one—to drop in some remembrance—and leave their college days—sealed up—and marked "1944."

SENIOR



BARRON, DECLAN F., Stanwood
ASB President, Who's Who in American
Colleges, Freshman Scholarship Cup



BODEY, MAYBELLE, Spokane
Vice-President IRC,
Social Chairman of Edens Hall,
WRA

CLARKE, DAVID L., Everett
Norseman, Board of Control,
Recreation Committee



ELDRIDGE, DONALD, Mt. Vernon
Board of Control,
Chairman Campus Day
Homecoming

ELENBAAS, BERNICE, Lynden
Vice-President WRA,
Sophomore Homecoming Princess,
ACE

CLASS

ELENBAAS, SERENA, Lynden
ACE Treasurer,
WRA, CCF



DADDOW, MARY BESS, Everett
IRC Treasurer

MacDOUGALL, MARY JANE
Skykomish
ACE, Alkisiah



RICHARDS, MARGARET ANNE
Everett
President of Edens Hall,
Who's Who in American
Colleges

WITTLER, JEAN MARION
ACE, Alkisiah
Choir



JUNIOR



ANDERSON, ELEANOR, Forks
Valkyrie, Secretary ACE,
WRA Cabinet



ANDERSON, SHIRLEY, Bellingham
Orchestra,
Choir



BAGLEY, HELEN, Aberdeen
Alkisiah,
WRA, ACE



BELLINGHAM, PATRICIA, Glasgow, Montana
ACE, Choir,
WRA



BENJAMIN, JUNE, Bellingham
Board of Control,
WRA Cabinet, ACE



BISHOP, DORIS, Bellingham
Vice-President Junior-Senior Class,
WRA Cabinet



BRIGHT, JEANNETTE, Renton
Vice-President Associated Students,
Who's Who in American Colleges,
President Interclub Council



BRUNSWIG, BETTY, Bellingham
WRA Cabinet, Valkyrie,
AWS Commission



COLOUZIS, GEORGIA, East Stanwood
President Blue Triangle,
WRA



CLOW, HARRIETT, Vancouver, Wash.
Business Manager Klipsun,
President Valkyrie,
AWS Commission

CLASS

EINES, MARIE, Ketchikan, Alaska
President WRA, Valkyrie,
Who's Who in American Colleges

ENDICOTT, MARY JEAN, Vancouver, Wash.
Transfer, Clark Junior College

GARDINER, AILEEN, Bellingham
President AWS,
Valkyrie

GILDAY, JAMES, Bellingham
Secretary-Treasurer Norsemen,
Board of Control

HOEGG, BETTY, Mt. Vernon
Transfer, Mt. Vernon Junior College

JONES, HAZEL, Bremerton
Blue Barnacles,
WRA, ACE

JONES, NADA, Winthrop
Alkisiah

KERN, MINERVA, Bellingham
WRA, Secretary Alkisiah

KOSCHE, RUTH, Snohomish
President ACE, AWS Commission,
Recording Secretary Inter-Club Council

MAPES, PAT, Camas
Transfer, Clark Junior College



JUNIOR



MCGREGOR, JEAN, Bellingham
President College Christian Fellowship



MUNSELL, BERNICE, Seattle
WRA Ushers,
Alkisiah



NOWOGROSKI, ZOSIA, Raymond
Secretary AWS, Valkyrie,
ACE



OLDS, RUTHE, Camas
Chairman Co-op Board, AWS Commission,
Secretary Valkyrie



OLSON, SHIRLEY, Bremerton
President Alkisiah, President Interclub
Council, Vice-President Edens Hall



PALMROTH, PEARL, Hoquiam
ACE



SINNETT, MARJORIE, Mt. Vernon
ACE, Alkisiah



SMITH, CHERYL M., Bremerton
Board of Control, AWS Commission,
Home Front Princess, 1943



SORGENFREI, VIRGINIA, Sequim
Secretary Valkyrie, Co-op Board,
Board of Control



STROEBEL, RUBY VIRGINIA, Anacortes
Who's Who in American Colleges,
Blue Triangle, WRA

CLASS

SUNDBERG, GLENNIS, Bremerton
ACE, Alkisiah

SUTHERS, ESTHER, Mt. Vernon
Transfer, Mr. Vernon Junior College



SCHLOEMER, GENEVEE, Bow



Not Pictured

... SENIORS ...

WALTER BAKER, Marietta
FRANCES DE GUST, Bellingham
LELAND E. DOW, Bellingham
LOIS A. HANKAMP, Lynden

EDA M. HARRIS, Vancouver, Wash.
ELEANOR W. LAKE, Bellingham
LAURENCE V. MUNIZZA, Puyallup
LELA C. TURNER, Chesow

... JUNIORS ...

MARJORY MOLL, Kent

MARGARET MOYER, Anacortes

GRACE R. TAYLOR, Bellingham

SOPHOMORE CLASS

They're not green, but they're not seasoned—they're sophomores and they make up the second largest class on the campus—and though they are traditionally considered as in-betweens—they stand for the activity leaders at WWC—for with the Juniors student teaching this year under the war emergency plan—and the Seniors busy degree teaching—the sophs had to take over this year—and fill the shoes—usually worn by upperclassmen. To give a cross-section—of the backbone the sophs furnish—for WWC—there is Pat Scott editing the WWC Collegian—usually an upper-classman's position—and ditto for Lorraine McConnell who heads—the Klipsun staff—leading the entire girl enrollment—Rachael Blekkink rules with the gavel at AWS—Harriett Clow is prexy of the campus elective club, Valkyrie—and when the votes were tallied for Board of Control position—this season three soph girls—Virginia Sorgenfrei, Alice Marie Anderson, and Zosia Nowogroski—won the offices. As for drama—Jeanne Knudsen led—the "Brief Music" cast—and in the athletic world—Roy Wark was Lappy's most consistent hoopster—and speaking of basketball—it was when the U. of W. Huskies scheduled a game with Lappy's Vikings—that the sophs rounded up their energy—and sparked the game with a publicity campaign—to make it—the peppiest—and best-attended game of the season—not only by stringing posters and canvassing the town with tickets—but by sponsoring a pep rally—the night before. Heading this campaign—with the help of Vincella Zankich as co-chairman—was class president Cale Campbell—the "see all, tell all" sportscaster of campus athletics—who had for officers—two other top athletes—of the feminine world—Alice Marie Anderson as vice-prexy—and Crystal Ackerman as secretary-treasurer—and not satisfied with three athletic officers—the sophs chose Mrs. Orpha Christensen—PE instructor—as class adviser. There are many of 1944's sophs—who will not be back to WWC next fall—Carol Hanify is already a full-fledged WAVE—and many girls plan to follow her footsteps—this summer—and many sophs—who are non-diploma and filling basic two-year requirements will be transferring—while those that do return will be busily—student-teaching. But—in the words of a sophomore—and we quote—"your sophomore year—is the tops—you don't suffer initiations—like a freshman—and you don't have to face leaving college—like the seniors. There are times—when it's handy to be just an in-between!"



Top Picture: A. Anderson, Campbell, Ackerman
Bottom Picture: Back Row: Ackerman, Driver, A. Anderson, Blekkink, Burke.
Front Row: Cody, Borchardt, Ackley



Top Row: Jackson, Golly, Jerstedt, E. Gilmore

Bottom Row: Hesby, L. Johnson, Graves

Top Row: Lindberg, McLeod, Moe, Lueken, Linder

Bottom Row: Murray, Mulvaney, McNair, McConnell, McInnes

Top Row: Nordvedt, Nowogroski, McMannama, Shomshak
Bottom Row: Robinson, Scott, Spromberg, Sorgenfrei, Stillman
Top Row: Wark, Turner, Spandel, Zankich
Bottom Row: Hanify, Tedford, Hilton





Top Picture: B. Anderson, Hillier, Dahlgren

Bottom Picture: Back Row: Bellinger, M. Anderson, Ashe, Boyer, Borden

Front Row: B. Anderson, P. Bright, Booras

FRESHMEN

Your Freshman year in college—usually a year connected with being shoved around by upperclassmen—with just getting acquainted with the school because you're only a freshman. But in this wartime—WWC's enrollment showed a majority of freshmen—the ruling class of the campus—they shed all their greenness the first week—at a mixer in the lounge—and turned black in November to entertain with a Minstrel Show—that won unanimously—WWC's Oscar for 1943-1944. All profits from the show—constituted the check that bought the nickelodeon—that is the pride of the student lounge.

This lounge helps trace the history of 1944's Freshman class—which mainly gathered there between classes—woeing over "College Problems," courses—and glowing when a freshman girl—Amy Jean Allen—was crowned Publications Prom Princess. Then, too, class prexy Tom Hillier—so firm with the gavel—ruled the Lounge's ping-pong table with a firm grip on the paddle—vice president of the class—Betty Anderson—was a habitual dancer in the lounge—while Elaine Dahlgren—secretary-treasurer—just liked to read. But the Freshmen were a versatile class—adding many athletes to Lappy's basketball team—adding two yell leaders to school spirit—and many entertainers to assembly programs—in fact—adding a lot to all WWC.

Top Row: Dahl, Custer, Dahlgren, Dorman, Clements
 Bottom Row: Caldwell, Denny, DePastel, Curtis, Carlough
 Top Row: Foster, Erlandson, Easton, Gardiner, Goff
 Bottom Row: Earling, Griffith, R. Erickson, B. Gilmore, Easterbrooks





Top Row: Jones, Heitbrink, Jenkins, Hansey, Hillier
 Bottom Row: Herr, Hunter, Jacobsen, Harris, Harmon
 Top Row: Lambert, Lewis, Lindberg, Larson, Kuljis
 Bottom Row: Kosola, Lifvendahl, Koetje, Ludens, Longpre



Top Row: Lenning, McLachlan, Morgan, Moldrem, Martin
Bottom Row: McLane, Mey, Martinson, McNally, Miller
Top Row: Pomeroy, Pendleton, Pells, Payne, Ossewarde
Bottom Row: Philbrick, Orphan, Nussbaumer, Person, Pirrung



Top Row: Rabb, Rue, Reimer, Rutledge, Ristine
 Bottom Row: Stotts, Samples, Shannon, B. Smith, Swenson
 Top Row: Witt, Williams, Thorneycroft, Weingarten, Zeller
 Bottom Row: Thompson, Tiedje, Von Bargaen, Thurman

WASHINGTON

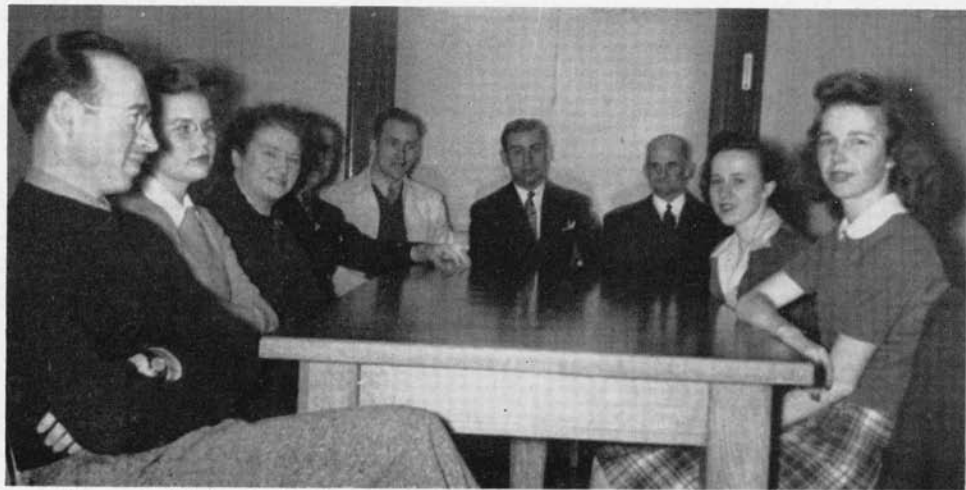
WESTERN

COLLEGE



1 9 4 4

UNIONS...



Barron, J. Bright, Dr. Kangley, Dr. Bond, Gilday, Munizza, Mr. Carver, C. Smith, Stillman

BOARD OF CONTROL

Board of Control, the governing body of the school, at its regular Wednesday night meetings led and directed the activities of the college.

Besides balancing the student affairs budget, the board planned Home Front Week-End, including the ship launching and the annual Campus Day affair held in Spring quarter.

They, with the elected faculty members, supervised the opening and the management of the Student Lounge, picking the managers. Spring quarter they arranged to have it open Saturday night between the hours of 9 and 12 o'clock. Money was collected for the purchase of new records and other amusements.

Under the capable leadership of senior Declan Barron, the Board surmounted numerous barriers and completed a year chock-full of activities.



Declan F. Barron



Burklund, Fisher, C. Smith, Sorgenfrei

CO-OP BOARD

Designed to plan the general rules and regulations and to take care of the interests of the Co-op, the Board continued its active work. This year the six student members and Mr. Louis Earle had to contend mainly with the lack of stock replacements, as books were hard to purchase. With the money they had from not being able to buy new stock, the board bought \$2,500 in War Bonds in the name of the Co-op. The Co-op Board is under the Board of Control, but works independently of it.



Editor Lorraine McConnell



Business Manager Harriett Clow

THE KLIPSUN

With a staff even smaller, and with more difficulties than last year, the second wartime Klipsun came off the press May 31.

Defense plants, assembly lines, and the home front are the themes carried out this year. The teachers are the foremen and the clubs and various organizations are symbolized as unions.

The six staff members worked faithfully all winter quarter mounting pictures. They had a tough time, but were thankful for their one great blessing—a gallon of rubber cement, the last one in creation. Thanks to that they somehow put up with the shortages of flash-bulbs, films, and available photographers. After spending most of their spring vacation writing copy, they met the deadline.



Top Picture: The staff party at Mrs. Burnet's

Lower Left: Helen Rabb and Marilyn Anderson look over the engraver's proofs

Lower Right: Lorraine McConnell, Harriett Clow and Helen Rabb work on the bills

Lorna Jean Booras did the art work and designed the covers and the division pages. Lucille Bovee supervised the writing of the copy, while Peggy Custer gathered most of the information. Marilyn Anderson helped to mount the pictures for the engravers. Harriett Clow, as business manager, wrestled with the budget and got all the necessities out of it. Last, but not least, Lorraine McConnell, editor, worked with all of them to help make this, the 1944, second wartime Klipsun, possible.



Inset: Editor Pat Scott

Top Picture: Staff members bid Rainier Clarie Marshall adieu

Bottom Picture: Marilyn Anderson and Marilyn Turner, feature editor, collaborate on a story

WWCOLLEGIAN

It wasn't an easy year, but Pat Scott, WWCollegian editor, brought the five-column paper through with flying colors. Her staff was almost all women, and inexperienced freshmen women, at that. Several changes were incorporated into the WWCollegian, including part of the sports page being given to women's activities and the feature page sponsoring service news of former students. With the assistance



Top Picture: Jean Mulvaney, Lorna Booras, Peggy Custer and Marilyn Anderson, waiting to surprise Marshall
Bottom Picture: The staff looks over Friday's WWCollegian
Inset: Business Manager Jean Elaine Mulvaney

of the publications adviser, Mrs. Ruth Burnet, the staff promoted new ideas and upheld traditions. First-class honor rating was won from ACP.

A sensational April Fool edition was brought back into being and a student directory was placed in the main hall. The annual Publications Prom was very successfully sponsored in collaboration with the Klipsun staff, with the men from the Whidby Island Naval Base as guests.



Top Picture: Standing: Scott, E. Anderson, Perssons, Dorman, Ford, Olson. Seated: C. Smith, N. Jones, Clow, Nowogroski, Miss Powers, Miss Booth, Gardiner, Stillman, Olds, Tedford

Inset: Aileen Gardiner

Middle Picture: The handwriting analysis booth at the Mardi Gras

Bottom Picture: Miss Powers and Rachel Blekkink



AWS

Advisers—MISS LORRAINE POWERS, MISS MIRA BOOTH
 President — RACHEL BLEKKINK
 Vice-President — PAT SCOTT
 Secretary — ZOSIA NOWOGROSKI
 Treasurer — MARJORIE MOLL

Always on hand and willing to do their part, the Associated Women Students have played a prominent role in the 1944 college year.

Under their sponsorship, the annual Kid Party helped to acquaint freshmen women. A tea was given for Governor Langlie on his visit to the college, and the Mardi Gras was sponsored to raise money for WWColegians to be sent to servicemen.

AWS rendered an important service in February when they sponsored entertainment for 100 high school girls meeting in Bellingham for a Girl Reserve conference. The traditional student teas were continued during the year.



Top Picture: Moldrem, Gilday

Inset: Stuart Moldrem

Chairman "Cupie" Clement and Don Neal at the Pep Rally

Bottom Picture: Foster, Witt, President, Winter and Spring



NORSEMEN

MR. F. W. KNAPMAN, Adviser
 STUARD MOLDREM, President, Fall
 HERB WITT, President, Winter and Spring
 LARRY MUNIZZA, Vice-President
 JIM GILDAY, Secretary-Treasurer

Men were in the minority on the campus again this year, but the Norsemen continued in the spirit of former years. In the fall they sponsored a very successful informal. During winter quarter they backed several basketball games, special "Rec" hours and assemblies.

Spring quarter the annual Norseman cruise brought the year to a successful climax.

Membership in Norsemen is open to all men in the school, and through this organization they are given an opportunity to enter into college social life.





INTERCLUB COUNCIL

Adviser — MISS NORA B. CUMMINS
President — SHIRLEY OLSON
Secretary — RUTH KOSCHE

All student organizations are under the control of the Interclub Council, which guides the activities for the school year. The group is composed of the presidents of all the active clubs in college and is concerned with their common problems.

Back Row: Hillier, Moldrem
Front Row: J. Bright, Spandel, Kosche, Colouzis, Eines, McGregor, Gardiner, Clow

VALKYRIE

Adviser — MISS VIRGINIA HAWKE
President — HARRIETT CLOW
Vice-President — MARY L. BURKE
Secretary — VIRGINIA SORGENFREI

The only elective group on the campus, the Valkyrie Club, has added pep and enthusiasm to the college year. The girls with the royal blue sweaters and white emblems have given outstanding service in school functions by caring for the student lounge, taking part in assemblies, and sending Christmas letters to servicemen.

Their pompons and cheers added vim to the rooting section at all the basketball games, where they assisted the yell leaders.

Back Row: Clow, Anderson, Sorgenfrei, Turner, Scott, Blekkink, Burke, Mulvaney, Brunswig, Richards
Front Row: Nowogroski, C. Smith, Olds, J. Bright, Stillman, Gardiner, McConnell, Eines, Tedford

BLUE TRIANGLE

Adviser — MISS HAZEL PLYMPTON
President — GEORGIA COLOUZIS
Vice-President — PEGGY CUSTER
Treasurer — CHARLOTTE SAMPLES

Service has been the keynote of the 1944 college year for Blue Triangle members. Affiliated with the Y. W. C. A., the club served as hostess aides to the Girl Reserves when they held their state conference here in February. Other activities have been the preparation of baskets for the orthopedic ward and war work which is in keeping with the times.

Back Row: McConnell, Olsen, Custer, Easterbrooks, Earling, Rutledge, Pendleton, Samples, Koetje, Remier, Bovee, Nowogroski
Second Row: Wittler, Von Bargaen, Spromberg, Tedford, Mey, Stroebel, Herr, Colouzis, Lindberg, Harmon, Dorman, McLane, Thompson
Front Row: Moyer, Sinnett, Sundberg, Knudson



SCHOLARSHIP SOCIETY

E. J. ARNTZEN, Adviser
DORIS TEDFORD, President
LORRAINE McCONNELL, Vice-President
DORIS LINDER, Secretary

In order to gain admittance to the Scholarship Society, the only honorary club in school, a student must have a grade point of at least 3.5 for three consecutive quarters. Since there were no eligible candidates in fall or winter quarters, the society's membership remained the same as in 1942-43.

Linder, Tedford, Kosche, McConnell

ACE

Adviser — MISS IRENE ELLIOTT
President — RUTH KOSCHE
Vice-President — MARY L. BURKE
Secretary — ELEANOR ANDERSON
Treasurer — SERENA ELENBAAS

Meeting once a month, the Association for Childhood Education has presented many worthwhile meetings this year. Organized to aid primary teachers on the campus, the group has had several guest speakers and student speakers during the year. A fall tea was given for new members, and other social functions were enjoyed during the year.

Back Row: Wittler, Eines, Clow, Bagley, Palmroth, Sinnett, Sundberg, Custer, Brunswig, E. Anderson,
Kern, McKinnell, Burke
Second Row: Richards, McInnes, Stroebel, Colouzis, Nowogroski, MacDougall
Front Row: E. Elenbaas, B. Elenbaas, Benjamin, H. Jones, Ruth Kosche, President

CCF

Adviser — MISS MAY MEAD
President — JEAN MCGREGOR
Vice-President — RALPH STEVENS
Secretary-Treasurer — EDITH JACKSON

CCF is the only campus activity which fosters Christian fellowship among its members. This club meets twice a month during the noon hour and two evenings a week in the Edens hall club room.

CCF carried out its agenda by sponsoring one of the first teas of fall quarter, by having a luncheon in the winter quarter which was open to the faculty and students, and by gathering at cozy fireside meetings. The year was ended with an all-school week-end conference at Lake Whatcom.

Thurman, H. Jones, Boyer, Lindberg, McGregor, President; Simmons, Jackson, Lewis



ALKISIAH

Adviser — MISS CHARLOTTE RICHARDSON
 President — SHIRLEY OLSON
 Vice-President — ZOSIA NOWOGROSKI
 Secretary — MINERVA KERN
 Treasurer — MARY L. BURKE

Alkisiah, active women's service club on the campus, has continued this year with its program of fine arts in addition to war work. Nora Burglon, author of children's books, was a guest in the fall. In addition to the traditional Valentine banquet, Alkisiah held a scavenger hunt to promote war stamp sales. A trip to Sinclair Island was enjoyed in the spring.

Back Row: Kosche, Burke, Richards, Brunwig, N. Jones, Boyer, C. Smith, P. Bright, Erlandson, Swenson, Simmons, Koetje
 Second Row: Bagley, Wittler, Spromberg, Nowogroski, Herr, Samples, Reimer, Bovee, McLane, Lindberg, Harmon
 Front Row: Kern, Colouzis, Sundberg, Sinnett, McKinnell, Knudson, MacDougall, Olson, President

VANADIS BRAGI

(Not Pictured)

DR. ARTHUR HICKS — Adviser
 DECLAN BARRON — President


Vanadis Bragi, reorganized during the fall quarter, is primarily a literary discussion group, the main object of which is to induce in the student a liking for good books and straight thinking.

Among the authors discussed this year were Ludwig Lewisohn and Lincoln Steffens.



WASHINGTON

WESTERN



COLLEGE

1 9 4 4

SWING SHIFT...



Dr. Haggard; Barbara Gillies, freshman princess; Jeannette Bright, junior princess; Marie Eines, Queen Sigrid VI; Pat Scott, sophomore princess; Cheryl Smith, junior princess

HOME-FRONT WEEK-END

Claiming the distinction of being the first college in the nation to sponsor the launching of a ship, WWC's Queen Sigrid VI sent the army tug L. T. 159 down the ways at the Northwestern Shipbuilding Company, Saturday, November 20, at ceremonies which highlighted the "Victory" theme of this year's Home Front Week-end.

Marie Eines, Queen Sigrid VI, and her court of princesses, reigned over all of the week-end events which began with the first performance of "Brief Music," the penthouse play, in the Edens Hall blue room, Friday night. The luncheon in the Edens Hall dining room Saturday noon further emphasized the Victory theme by decorations and by the program which featured a broadcast of the launching ceremonies.

Climaxing the week-end, WWC students and faculty, the alumni and their friends danced to Doc Chase's music at the annual Home Front Week-End dance in the Physical Education building Saturday night.

In spite of the war, the alumni and grads who came back helped make this traditional week-end what it always has been—a friendly reuniting of old and new students at their college on the hill.



Marie Eines and Declan Barron in the receiving line, Homecoming Dance

BRIEF MUSIC

"Brief Music," the gala three-act comedy, which first held the limelight in fall quarter, proved to be a star in the entertainment field. This exacting portrayal of college, vividly presented by an all-girl cast, won loud acclaim for its vivacity and charm. At the initial opening of the new Bellingham Theater Guild Playhouse, "Brief Music" was the opening attraction, and was also presented to the Girl Reserves the closing night of their conference.

Top Picture:
Back Row: Dahlgren,
P. Bright, Burke,
Olds, Reimer
Front Row:
Erlandson,
Knudson
Bottom Picture:
Knudson, Reimer,
Dahlgren, Burke,
P. Bright, Olds,
Erlandson





MINSTREL SHOW

A scintillating cake-walk up the aisle of the college auditorium opened the minstrel show, presented by the freshman class, which successfully brought to a close the fall social season at WWC.

Starting with the catchy number "Mandy," the Darktown Minstrels strutted their stuff with an ensemble, Declan Barron acting as the traditional interlocator, and with an added feature, "Uncle Tom's Cabin," presented by an all-faculty cast. The show ended on a patriotic note, with all participants singing "Its a Grand Old Flag."





CAMPUS DAY

May 10! Campus Day was here at last, and though the annual trek to Lakewood was impossible, an expectant group left the campus for Whatcom Falls Park, under the leadership of Don Eldridge.

The morning of May 10 was begun with skits presented in the assembly by clubs and classes. After the success of the skits everyone was in a picnic mood for the activities of the day. The group returned to the campus for an evening of entertainment in the Student Lounge.

Following custom, 1943 Campus Day is pictured here.





Top Left: Bill Hatch crowns Princess Amy Jean
Top Right: Betty Hoegg, Pat Mapes and Louise Lnidberg with their navy escorts between dances
Bottom Left: The Edens Hall date bureau in action
Bottom Right: Artist Lorna Jean Booras sketches Harriett Clow's picture for the prom decorations

PUBLICATIONS PROM

By choosing the reigning Princess, furnishing 125 men and sending the Whidby Jivers to supply the music, the Whidby Island Naval Air Base became the predominating feature of the fifth annual Publications Prom.

Those enjoying the music and dance were staff members from the county high schools, invited patrons and patronesses, parents of the princess candidates and college students with their guests.

Early in the winter quarter 21 girls were chosen by the Norsemen Club in the preliminary judging for the princess contest. Later the ten finalists were chosen by Mrs. J. N. Gilbert, local artist; Mr. Ben Sefrit, Herald photographer, and Jack Van de Wetering, high school photographer. Individual portraits of these girls were sent to Whidby Island, where a committee of Navv men chose Amy Jean Allen, a freshman from Woodlands, as the most photogenic girl of WWC. She was crowned at the prom by Ensign Bill Hatch, former ASB president.

The committee worked smoothly, despite wartime scarcities and restrictions, under the direction of L. McConnell, Klipsun editor; Pat Scott, WWColegian editor, and Mrs Burnet, publications adviser.

AMY JEAN ALLEN
1944 Publications Prom
Princess

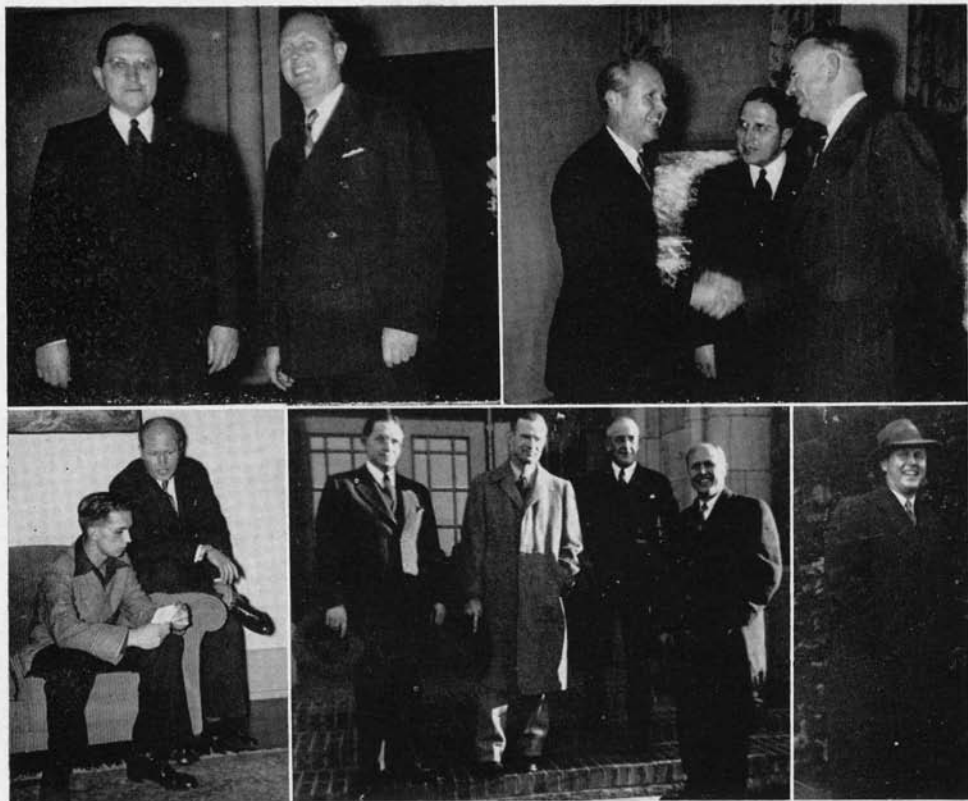


Center Row: Allene Rue,
Peggy Payne, Marjorie
Sinnett

Left Row: Betty Fisher,
Marilyn Turner, Jeanne
Knudson

Right Row: Pat Gardiner,
Harriett Clow, Elaine
Dahlgren





Pictures of Governor Langlie's visit, taken at the AWS reception and during his tour of the campus

THE GOVERNOR VISITS

Governor Arthur B. Langlie paid his first visit to Western Washington College on November 5.

After his address in the auditorium, Governor Langlie adjourned to the faculty room, where he met the members of the faculty and student body. Following the reception the Associated Women Students served tea in their lounge across the hall.

Governor Langlie was accompanied on a tour of the campus and the new training school by several faculty members.



THE STUDENT LOUNGE

The new Student Lounge proved this year to be the center of all school activities. Starting with the fall AWS kid party, the lounge from then on was the accepted meeting place for students between 11 and 4:30 o'clock.

Ping-pong, dancing, and gin rummy were the main forms of entertainment, but there was always something else doing besides. The freshman class bought and paid for a nickelodeon, the only addition in furniture this year, with the proceeds from their minstrel show.

Jean Borchardt supervised the lounge fall quarter, and Bob dePastel winter and spring quarters. Valkyrie club members volunteered to take charge when the student manager couldn't be there.



Back Row: Coach Lappenbusch, Pells, Foster, Moe, Marshall, Burklund, Gilday, Olson, Campbell (student manager)

Front Row: Ross, Sivertson, Doud, Ludwick, Munizza, Wark, Pomeroy, Dahl, Bland

BASKETBALL

Because of a curtailment of sports due to the war, basketball took the year's spotlight in athletic activities.

At the initial workout, Coach Lappenbusch found two lettermen, three veterans from last year's five and a host of promising material. Using the lettermen, Captain Ernie Ludwick and Larrie Munizza, as a foundation, the WWC mentor quickly whipped a formidable squad well coached in the usual fine style of the Lappenbusch regime. With veterans Roy Wark, Jim Gilday, Harold Moe, Paul Foster, Herb Witt and Lowell Doud and the promising freshmen candidates Clarie Marshall, Gene Sivertson, Bob Ross, Chuck Pomeroy, Ed Olson, Jerry Pells and Dale Burklund, the Blue and White was ready to take on all comers, including the University of Washington Huskies. In these clashes, the Viks really showed the ability that was theirs as they came close to toppling the vaunted Huskies. In the first clash the Huskies were outplayed and were surprised to find themselves up against a team that wouldn't give up. Coming from behind in the second half from a two-point deficit, the Lappenbusch team drove Washington until with a minute and 30 seconds left to play the score read 35 to 35. In the closing half minute the greater height and experience of the Huskies drove them to a 38 to 35 victory. In Seattle, the Vikings took the initiative and played hard to a 20 to 12 half-time lead over the Huskies. In the last period the Viking force had to succumb to greater height and stronger reserves. Again it was only a three-point margin for the University, 31 to 28, but a decided moral victory for the Blue and White.



Basketball Scores

Vikings	Opponents
38	Coast Guard 24
35	University Huskies . . . 38
48	Whidby Flyers 54
28	University Huskies . . . 31
47	Fort Lewis 60
38	Whidby Flyers 48
58	Camp Jordan 43
67	C. P. S. 43





Back Row: Bishop, Zankich, Benjamin, Mulvaney, Ackerman, Brunswig, Kosola, E. Anderson, Kosche
 Front Row: Bowden, Driver, McLeod, A. Anderson, Eines (President), Blekkink, Ford



Marie Eines

Fifty-eight

WRA

Adviser — MISS VIRGINIA HAWKE
 President — MARIE EINES
 Vice-President — ALICE MARIE ANDERSON
 Secretary — RACHEL BLEKKINK
 Treasurer — CRYSTAL ACKERMAN
 General Sports Manager — IRIS BOWDEN

Marie Eines, as president, kept the Women's Recreation Association one of the most active clubs on the campus this year. The WRA sponsored a sports party fall quarter, and a costume party on Washington's birthday for members, and following the first "U" basketball game, held an all-school carnival.

During both the fall and winter quarters an initiation tea was held for new members, during which they signed the membership scroll.

Turnouts were staged in hockey, volleyball, basketball, soccer, and baseball. During winter quarter bowling was sponsored by the club.



Shots of field hockey and basketball, two of the favorite girls' sports

WRA: HONOR TEAMS

BASKETBALL TEAM

Georgia Driver
 Louise Koetje
 Barbara Caldwell
 Cheryl Smith
 Allene Rue
 Crystal Ackerman
 Nell Kosola
 Doris Bishop
 June Benjamin
 Peggy Payne

BASKETBALL TEAM

Charlotte Samples
 Alice Marie Anderson
 Rachel Blekkink
 Iris Bowden
 Lorna Jean Booras
 Marie Eines
 Jettie McLane
 Barbara teHennepe
 Betty Brunswig
 Edyth Jackson

VOLLEYBALL TEAM

Crystal Ackerman
 Alice Marie Anderson
 Vinnie Zankich
 Georgia Driver
 Betty Brunswig
 Doloris Persson
 Joan Thorneycroft



Mixed (?) wreck!! — O-le-o-lad-ee-o — Show them poils, Hillier — Mourning the results of the "U" Game — Navy rooters — Wide open spaces — Plop!!



Just looking, thanks — Rear view of the Mardi Gras — Ruthe on Dec — On the rocks? — Waiting, Lorna? — MEN! — Leg art — No place to go . . . so!

In Memoriam

WVC mourns the loss of Miss Bertha E. Crawford, English teacher in the campus junior high school from 1917 to 1939, who died February 11, 1944.

"Dulce et decorum est pro patria mori."
—Horace.

CHARLES STARKOVICH
RAYMOND BARNES
WILLIAM McNEIL
CLINTA CAMPBELL
ARTHUR TOOTHMAN
CHESTER ORLOFF

**WE WISH TO EXPRESS OUR
APPRECIATION TO:**

MR. ALBERT P. SALISBURY of the
Western Engraving Company, Seattle,
Washington.

MR. CHARLES BEARD and MR. WILLIAM
STANLEY of the Union Printing Com-
pany, Bellingham, Washington.

MR. J. W. SANDISON, KEITH STUDIO,
THE BELLINGHAM HERALD, WALTER
BAKER for photography.

The 1944 Klipsun staff for their hard work
and cooperation in the production of this
annual.

LORRAINE McCONNELL, Editor

HARRIETT CLOW, Business Manager.

