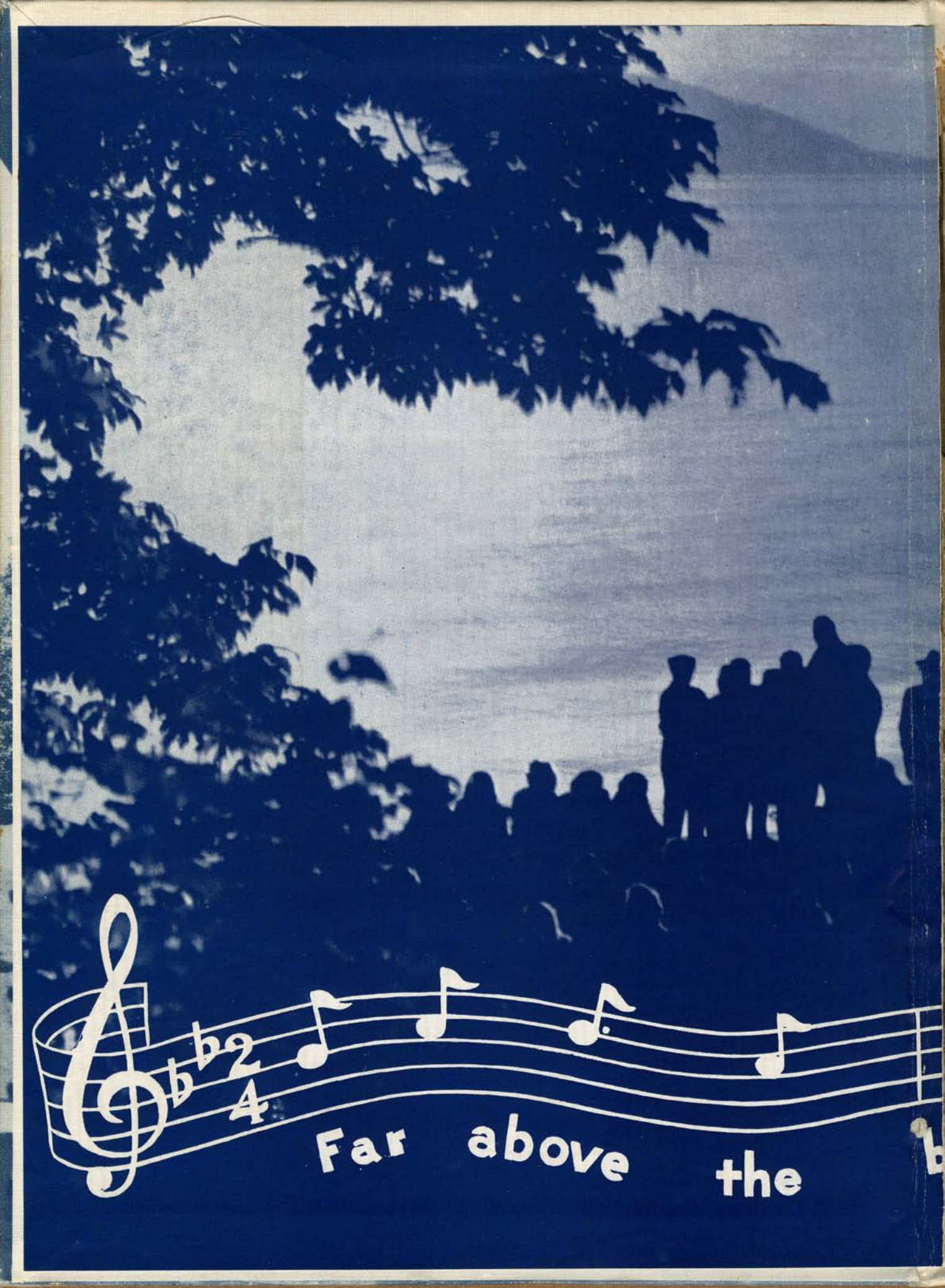




The KLIPSUN 1947



Far above the



ay's

blue

water.....

W

W

C

The **1947 KLIPSUN**

The **1947**

KLIPSUN

PUBLISHED BY WESTERN WASHINGTON



COLLEGE OF EDUCATION - *Bellingham, Washington*

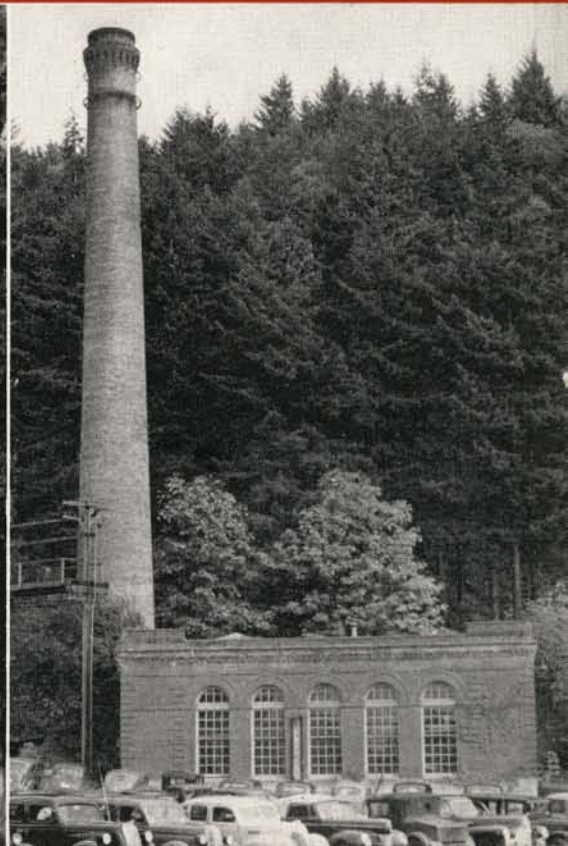
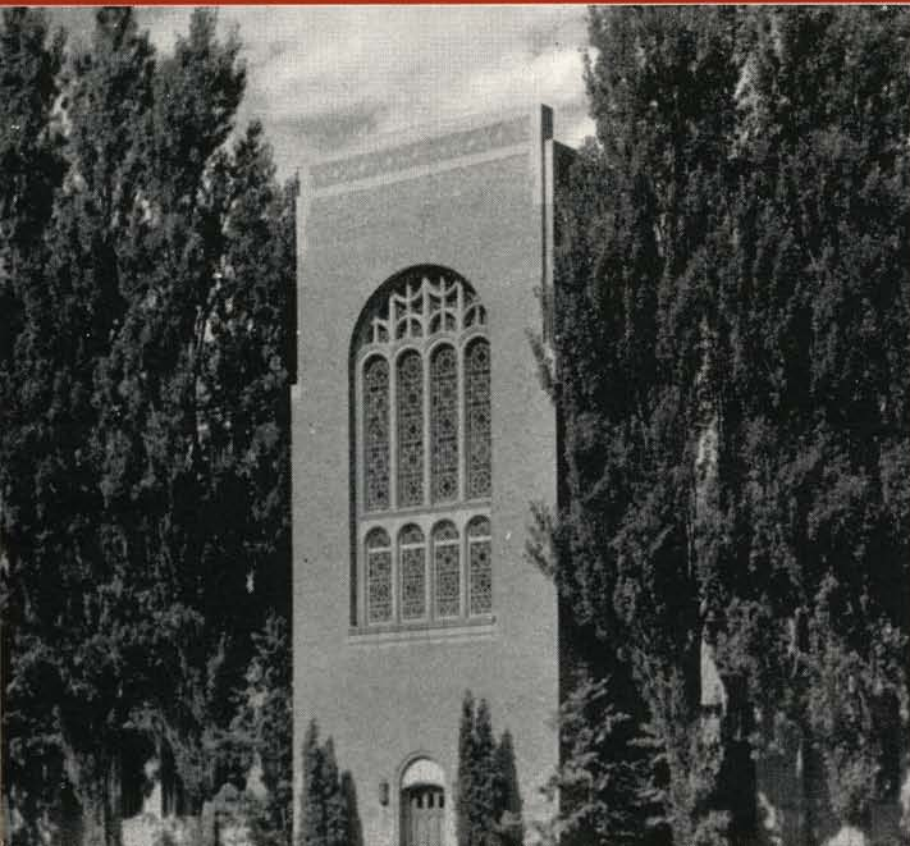
CLARK BROWN, *Editor*

ROLAND RICHARDS, *Business Manager*

BETTY MCLEOD, *Art Editor*



*Your footprints
Your campus
... and you*





COVER: *Hello Walk from the library's front door.*

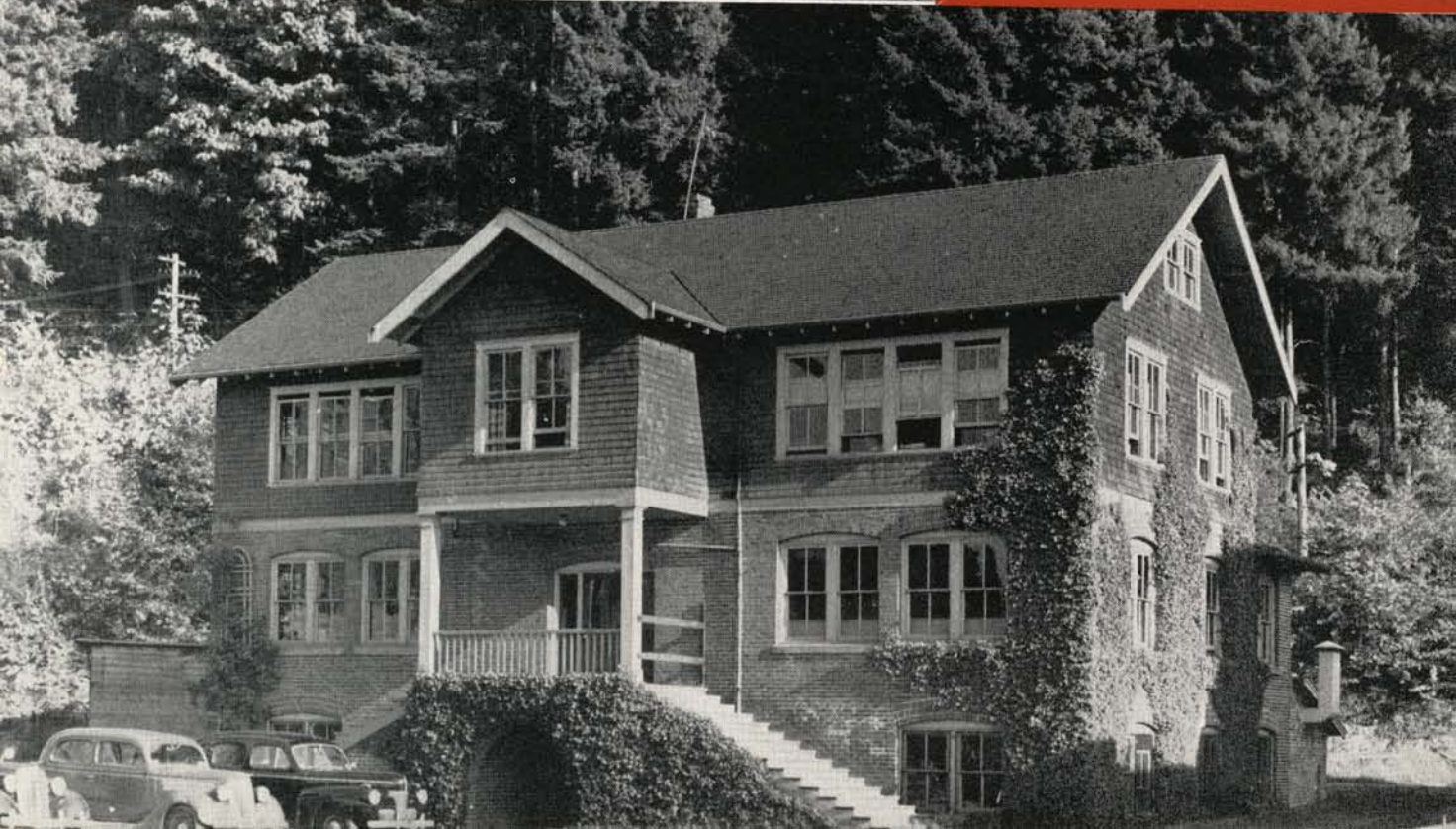
END PAGES: *Songs at Sunset . . . Larrabee State Park and summer salmon bake.*

IN COLOR: *Administration building in summer's glow.*

HERE LEFT: *Edens, the library and one last look—the heating plant.*

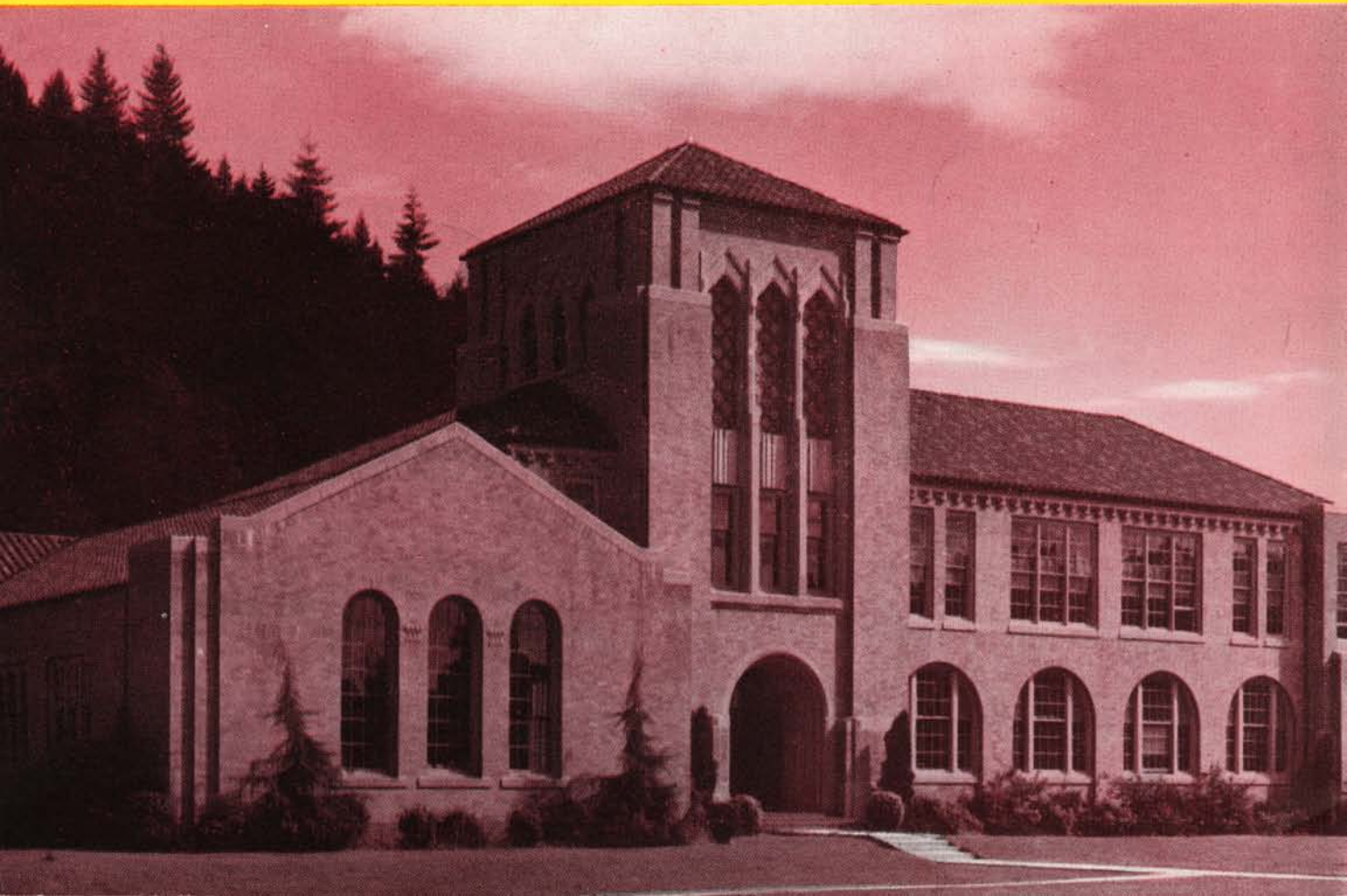
HERE RIGHT: *Campus greens and the Industrial Arts building at the base of Sehome hill.*

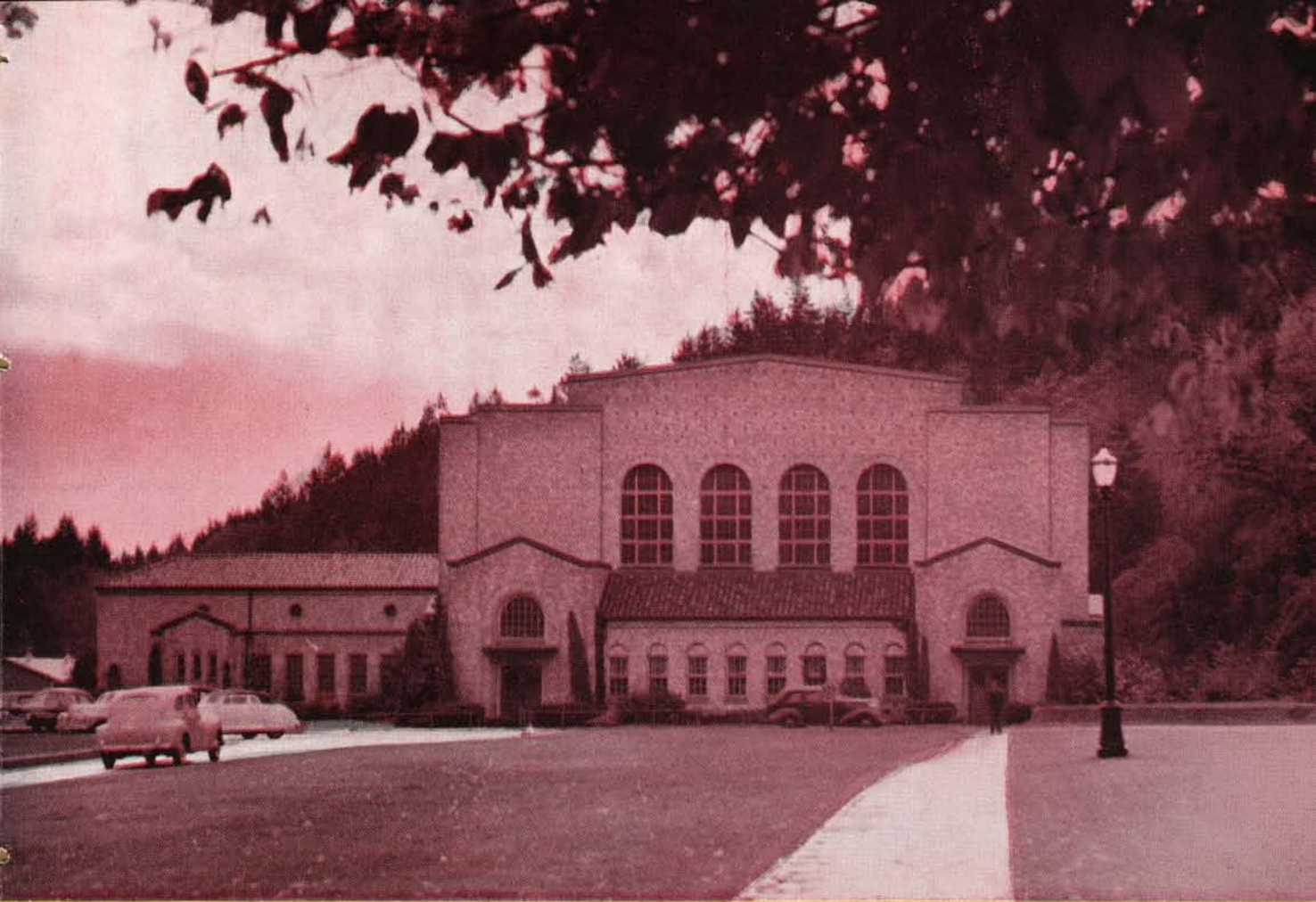
ON FOREWORD: *Where mind and body correlate in the modified romanescque buildings of the elementary training school and physical education department.*



A Bridge . . .

As you walk down the avenues of posterity, may you sometimes pause to thumb through the pages of your 1947 Klipsun and trace the footprints of your college life . . . to relive the happiness of those carefree days . . . class discussions . . . the groping towards intangibles . . . serio comic conversations . . . to summon once again to mind the haunting doubts . . . the positive conclusions . . . the frivolities and complexities of social life.





For Memories . . .

May you remember seeing Indian summer gradually fade into the short, gray days of winter . . . to blossom once again into spring sunshine . . . the men's hall growing daily before our eyes . . . the lights from the library windows tracing lacy patterns on the sidewalk at dusk . . . may you recall these images, linked with so many more, that add up to the year we spent together . . . a year existing now only in memory.



FROM LEFT TO RIGHT: Fall registration lines; the duck; Russ Skidmore takes aim; Norseman dance; cheering the football team off; an air view; opening week picnic; Daniels Hall's winning Homecoming display.

Registration lines that seemed to stretch for miles . . . halls crowded with unfamiliar faces . . . a smile of recognition here and there . . . a campus mellowed in October sunshine . . . a picnic . . . a pep rally . . . a dance. These formed your first impressions of college life-to-be in 1946-47.

The initial flurry of excitement settled comfortably into a routine of scholastic activities. Library instructions . . . a little study . . . Thursday afternoon tea . . . mixed rec . . . 10 o'clock coffee time . . . a football game . . . a cigarette in the lounge . . . a deficiency.

Queen Sigrid IX and her royal court reigned over a festive Homecoming weekend. Jam-packed auditorium . . . rosy-cheeked chorus girls . . . hello Ma — hello Pa . . . chrysanthemums . . . Vikings 9, Lutes 0 . . . a victory celebration.



FROM LEFT TO RIGHT: Lounge time; the walk in autumn; those library doors; band members in "the spirit of '47"; behind the loan desk; noon time; another year—another block.

King Winter softly clothed the campus with a blanket of snow, heralding the approach of ski trips . . . sprained ankles . . . extra blankets . . . Christmas vacation . . . a New Year . . . a new quarter . . . a slushy sidewalk . . . gradually melting into the new green buds of spring.

Once there were ten princesses and one ruled for a night . . . new spring formals . . . a crowded dance floor . . . an S. P. . . a battery of flashbulbs . . . a Collegian extra. The Publications Prom makes pleasant reminiscing.

A merry little breeze conveyed to you its welcome message . . . a buzzing bee . . . a cricket heard at twilight . . . a class cut—or two—or three . . . a cruise to the islands . . . trips to the lake . . . sunburns . . . Campus Day . . . classes legitimately omitted this time . . . summer vacation beckons, rich with promise.



As you walk . . .

Down the Corridor of Time, you stop to look at the pictures of the past . . . remembering people and places . . . happy thoughts, most of them. Yes, it is the happy thoughts you like to recall. For now, and for the future . . . we present some people . . . imprints in the Corridor of Time.



A new era is emerging at WWCE. At the present rate of change, the graduates of 1947 may fail to recognize the campus a few years hence.

Because of the large enrollment of veteran students it was found necessary to construct a new men's dormitory, which will be ready for use in September, 1947. Housing projects at Huntoon Drive, Sehome Hill, and Normal Drive house veterans and their families. Installation of a new heating plant was begun in the winter of 1947.

Sometime in the not too distant future two new buildings will be added to the campus: a new industrial arts building, and an auditorium-music building.

A new law enacted by the 1947 state legislature will permit WWCE to grant both the Master of Arts in Education and the B. A. degree in liberal arts. As a result, the faculty of the college will be greatly enlarged and the general facilities of WWCE improved and amplified.



THE TRUSTEES: Joseph T. Pemberton, Mrs. Violet Boede, and Vern Branigin. Appointed by the Governor, this board formulates and appraises details of finances, building, and general policy. LEFT: The Sehome housing project moves in. RIGHT: Cleared away for the new men's dorm location were the College Inn and half a hill.



Dr. William Wade Haggard

Dr. Haggard, the capable and energetic head of WWCE, has completed his eighth year as president here. Dr. Haggard is a native of Tennessee. He received the B. A. and Ed. D. degrees from Marysville College, an M. A. from the University of Michigan, and a Ph. D. from the University of Chicago. Before coming to Bellingham he was the superintendent of the Joliet Junior College and township high school of Joliet, Illinois.

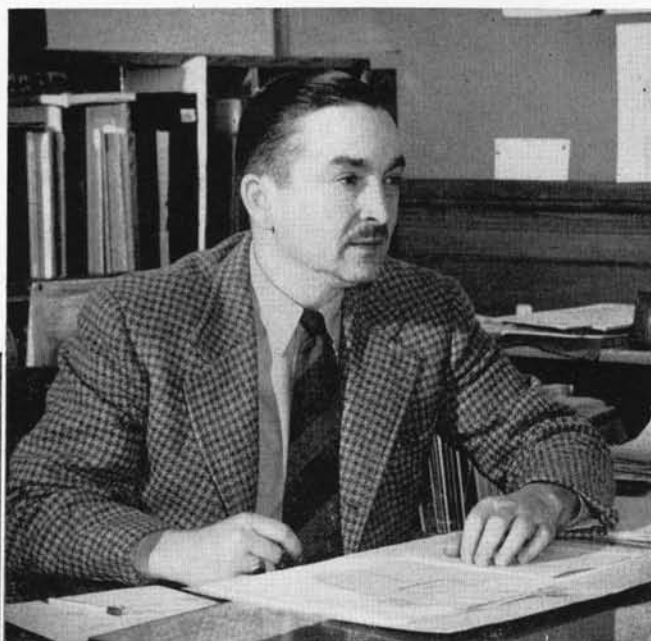
It has been an extremely busy year for Dr. Haggard. As the president of WWCE, it is his duty to execute and carry out the policies for which the College stands. His vigorous championship of the cause of WWCE before the state legislature in Olympia is largely responsible for the new law allowing the College to grant the master's degree in education and the bachelor's degree in liberal arts, as well as for the appropriation of funds for new buildings on the campus and for increased salaries. As a result of his leadership WWCE is making rapid strides towards a bigger and better future.

Heads

Acting between both a busy faculty and a trying student body

CLYDE W. McDONALD, Dean of Men, found a valuable place in campus life, in this, his first year at WWC. Big Bill's family increased 528 plus one.

DR. RAYMOND F. HAWK, Director of the training school, is a leader in progressive education and is typical of the well adjusted personality, with his high good humor and "know-how."



DR. MERLE S. KUDER, Registrar, likeable, energetic, is always willing to help a frantic frosh or a struggling senior. Dr. Kuder is a man well worth knowing.

LORRAINE POWERS, Dean of Women, keeps an all too successful vigil on her exuberant charges. Miss Powers' responsibilities are many, ranging from the teaching of college mathematics to the supervision of campus social activities.

Faculty and Friends

In few college would it be possible for students to receive such individual attention and guidance as they do at WWCE. The teacher-student relationship is on a basis of friendship and of working together. It is a give and take proposition. Here the student feels that his opinions and ideas are accepted for what they are worth. Faculty and students work as a team and to win.

MARGARET AITKEN, M. A.
Physical Education

DECLAN BARRON, M. A.
Science



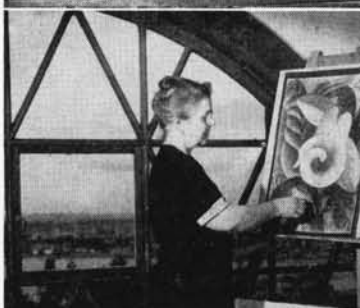
MAY L. BETTMAN
Typewriting and Extension, Shorthand

MIRA E. BOOTH, M. A.
Music



HAZEL BREakey, B. S.
Art

NEVILLE H. BREMER, M. A.
Campus School, Eighth Grade



RUTH A. BURNET, B. A.
Newswriting, Publications

SAM E. CARVER, M. A.
Physical Education



Friendliness and Democratic Practice



KATHERINE M. CASANOVA, M. A.
Campus School, First Grade

MOYLE F. CEDERSTROM, Ph. D.
English



EDNA CHANNER, M. A.
Campus School, Fifth Grade

ETHEL CHURCH
Secretary to the President



LINDA COUNTRYMAN, M. A.
Home Economics

NORA B. CUMMINS, M. A.
Social Sciences; Counsellor to
Student Clubs



FRANK L. D'ANDREA, Ed. D.
Music

IRENE M. ELLIOTT, M. A.
Campus School, Second Grade



GEORGIA P. GRAGG
Handwriting and Bookkeeping

IRWIN A. HAMMER, Ed. D.
Education

are Keynotes of WWC Faculty Life

ARTHUR C. HICKS, Ph. D.
English

VICTOR H. HOPPE, M. A.
Speech



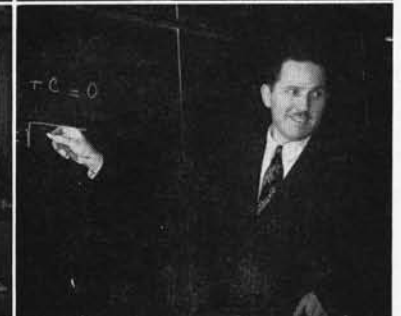
ELIZABETH M. HOPPER, M. A.
Secretary, Appointment Bureau

THOMAS F. HUNT, M. A.
Geography



HENRY S. HURD
Printing

STEWART A. JOHNSTON, Ph. D.
Mathematics



LUCY KANGLEY, Ph. D.
English

PRISCILLA KINSMAN, M. A.
Campus School, Third Grade



FLORENCE J. KIRKPATRICK, M. A.
Science and Nursing Education

FRED W. KNAPMAN, M. S.
Science



There is an Art in Knowing a Subject



CHARLES F. LAPPENBUSCH, M. A.
Physical Education

ELMER LEAF, M. S.
Industrial Arts



PAUL LUSTERMAN
Band and Orchestral Instruments

JUNE McLEOD, B. A.
Campus School, Sixth Grade



ALMA MADDEN, M. A.
Speech

PEARL MERRIMAN, M. A.
Campus School, Fourth Grade



MARJORIE MUFFLY, M. A.
Physical Education

KEITH A. MURRAY, Ph. D.
Social Sciences



JAMES H. O'BRIEN, M. A.
English

SYNVA K. NICOL, M. A.
Campus School, Kindergarten

but an even Greater Art in Teaching it

EVELYN ODOM, M. A.
Techniques of Teaching

MIRIAM L. PECK, M. A.
Art



RUTH E. PLATT, M. S.
Science

HAZEL J. PLYMPTON, M. A.
Art



BERNARD W. REGIER, M. M.
Music

LUCILLE E. REIMAN, M. A.
Home Economics



MORTON J. RENSCHAW, M. A.
Director of Research; Education

CHARLOTTE B. RICHARDSON,
M. A.
Industrial Arts



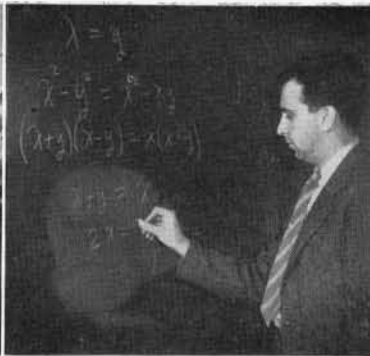
J. ALAN ROSS, Ph. D.
Education; Veterans' Affairs

HOWARD D. RUSHONG,
M. A. in Education
Campus School, Seventh Grade





JEAN W. SHEPHARD, M. A.
Campus School, Ninth Grade



RALPH H. SIMONDS, JR., B. A.
Mathematics and Science



LEONA M. SUNDBLUST, M. S.
Science



ANNA ULLIN, M. A.
Foreign Languages and English



ELSIE WENDLING, M. A.
Techniques of Teaching



RUTH WEYTHMAN, M. A.
Physical Education



NAN D. WIJK, B. A.
Voice



PAUL D. WOODRING, Ph. D.
Psychology and Education

Not Pictured

- EDWARD J. ARNTZEN, M. A.** Social Science
- VIVIAN JOHNSON, M. A.** In-service Training
- CLARENCE L. SCHUSKE, M. A.** Science
- BEARNICE SKEEN, M.S.** Remedial Education
- EDITH R. STRANGE.** Piano

On Leave

- LESLIE HUNT, M. A.**
Campus Junior High School
- CHARLES M. RICE, M. A.**
Industrial Arts
- ALBERT VAN AVER, M. A.**
English

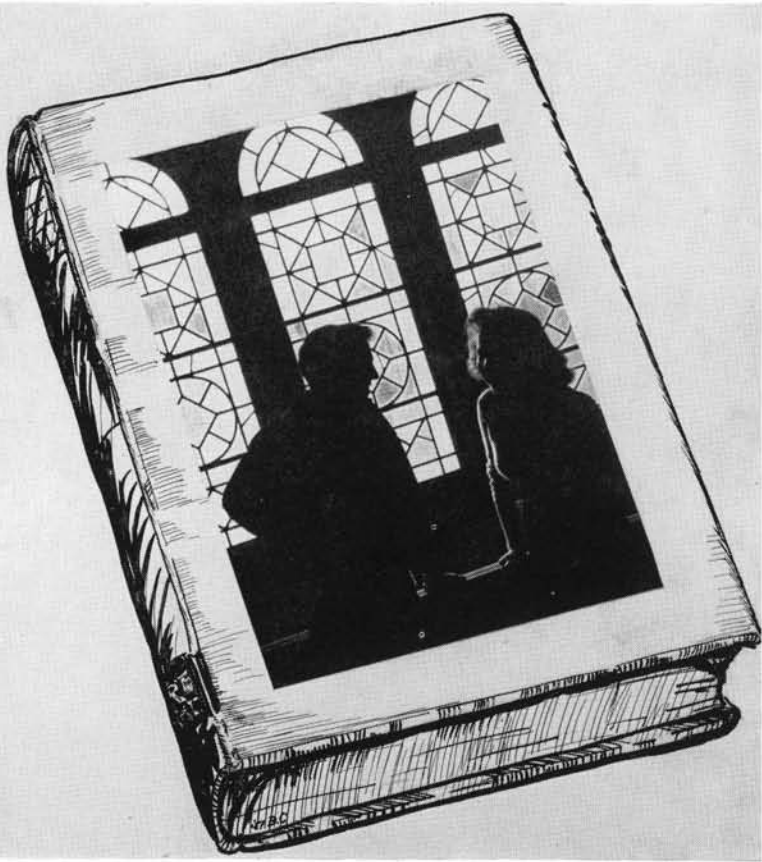
Emeritus

- ELIAS BOND, Ph. D.**
Mathematics
- LYNUS A. KIBBE, M. A.**
Education
- IRVING E. MILLER, Ph. D.**
Education
- MABEL ZOE WILSON, B. L. S.**
Librarian

On Temporary Appointment

- BETH HEARSEY, B. S., B. L. S.**
English
- ALICE REGIER, B. A., B. S.**
English
- GEORGELEN SCHUSKE, B. A.**
Mathematics
- MARY WORTHYLAKE, B. A. in Ed.**
English

In the Library, where all the heroes of history are found, 72,000 books lie in wait for the ambitious student . . . plus more than 300 magazines . . . a sizeable reference and periodical file, some dating back to 1800 . . . open shelves and no fines attached . . . a spacious reading room seating some 300 students . . . a children's library for young and old . . . a place to study . . . the library instruction course . . . term themes . . . the card catalogue . . . a place to make a date . . . the Encyclopedia Britannica . . .



MILDRED HERRICK, M. L. S.
Librarian

DONNA HASKELL, M. L. S.
Cataloger

MIRIAM B. SNOW, M. S.
Librarian of Children's Literature

HERBERT R. HEARSEY, M. L. S.
Reference Librarian

Library in its blanket
of snow.

PEARL REESE
Secretary





MARY DUNN
College Hospital

LOUIS EARLE
Students Co-op Store
(Ann Garcia, Registrar's Office,
shopping)



DOROTHY LEEDY
Bureau of Research

MAY MEAD, R. N.
College Nurse



NANCY SMITH
Secretary to Director of Student Teaching

MILDRED TREMAIN
Secretary to Dean of Women

UPPER RIGHT: Registrar's office. at the counter, Marjorie Kingsley, recorder; desk right, Grace Blake, assistant in the registrar's office.

Administrator's Aides

They keep nimble fingers on the college pulse with their special abilities . . . nursing . . . coordinating . . . helping you . . . recording . . . balancing budgets.



LOWER RIGHT: Business office, left to right, Sam Buchanan, financial secretary; Doris Buchanan, assistant in the business office; Margaret MacKinnon, B. A., accountant.



GEORGE SPERRY
Engineer



KASPER AAGARD
Carpenter



CECIL MOLDER
Night Watchman



WAYNE ENSIGN
Custodian



GEORGE DACK
Gardener



Autumn comes to the campus

Maintenance Men daily work over the WWC campus to keep its 83 acres beautiful. Men who cooperate so fully with every project to better the college . . . to improve . . . to add . . . to help.



DON PACKARD, boss man on this campus, is our popular and able student body president from Longview. Extremely active in college sports, he was a member of the football team and is co-holder of a college swimming record. Don is a senior and plans to become a teacher. He and his attractive wife, Dorothy, and daughter, Jodie, reside in the Huntoon Drive housing project, of which he is the manager. Packard drives hard in play and studies and wins friends by the carload.



This year's student body vice-president, DON BROWN, is one of the leading personalities of WWC. He has taken part in numerous student activities, is a tennis star, and president of the Interclub Council. Don is also a veteran, hailing from Bremerton. A senior, he plans to enter the field of education. People who know Don find him a foremost booster of WWC, a fine bridge player and an especially "good Joe."

For those who voted . . .

In any democratic organization the governing body is often under criticism, and the Board of Control, during the past year, proved no exception. However, despite oral and written attacks by individuals and the press, the Board continued to serve the student body in a forthright, intelligent, and progressive manner.

Highlighting the years events were Homecoming Week and Campus Day. In addition to these activities — the sponsoring of Rec Hours, the Pep Band, Sports Banquet, and a myriad of other social events — the Board managed and disbursed all ASB funds. To represent WWCE at Pacific Northwest College Congress, the Board picked Jim Sanford and Arnold Lahti. Georgia Driver was chosen to represent the College at the National Convention of Women's Athletic Associations in Greensboro, North Carolina. Jack Duranceau and George Burton were made lounge managers, and Pat Loomis was selected as secretary to the Board of Control, a position which she filled admirably. To make life more enjoyable for the students, the Board purchased a juke box and new furniture for the lounge.

As the Klipsun goes to press, the Board of Control consists of Don Packard, Don Brown, Donna Redmond, Jim Sanford, Georgia Driver, Gloria Carey, Ted Gary, Vern Brockmier, and Shirley Lindstrom. Able faculty advisers were Dr. Lucy Kangley Dr. Alan Ross, and Sam Carver.

Thus through a hectic year, and under conditions which were far from favorable, the Board of Control has skillfully piloted the Viking ship onward to a greater future.

Board of Control representatives, pictured left to right top are Carl Lindell, Georgia Driver, Mickey Smith, and Bill Wilder. Bottom row: Donna Redmond, Jim Sanford, Pat Van Zandt, and Pedie Johnston.





When you stop . . .

To browse through the books on the Shelves of Time, dusting off half-forgotten thoughts, you will meet again the people you knew and loved . . . places, plays and parties . . . tunes, tones and tempos . . . and the freshmen, the primers on the Shelves of Time.



Candidates for Graduation . . . 1950



TOP: Conferring are Art Runestrand, vice-president; Dr. Keith A. Murray, Freshmen class adviser; and secretary-treasurer, Miriam Anderson.

CENTER: Freshmen class president, Jim Pill, coming down from the speech department.

BOTTOM: Searching the library card catalogue for information on their term themes are freshmen Madelyn House, Jerry Halpern, and Genevieve Martin.

We came, we saw, we conquered; yes we did, and in a big way. At first we were confused, and very optimistic as to how long it would take us to make a place for ourselves here at WWC. Then we stopped, looked around to see how things were done, and decided we needed some class officers to help guide us through the year.

There was a big likable guy named Jim Pill who made the kind of president we wanted and as for Art Runestrand, our vice-president . . . he had a knack of handling any situation with the greatest of ease. We never could have gone wrong on that girl Mimi Anderson, a combination of brains and personality, whom we selected as secretary-treasurer.

We weren't just a bunch of silly kids, either, for the majority of our class was made up of vets. Take a portion of their maturity and a dash of the freshness of the students just out of high school and you have the makings of good class.

Our group excelled in everything from scholarship to sports. We had the largest body of scholarship students ever to enter the school. Wallace Miller and Mel Lindbloom were just two of our frosh football stars. Then when basketball season rolled around there were Larry Gayda, Bob Clements and a host of others who turned in swell performances on behalf of the freshmen class. In dramatics Phyllis Threlkeld and John Shellebarger proved themselves to be good material for the drama department. We were the spark plugs behind the organizing of the ski club and our ability to make a success of our undertakings was shown in the managing of the Barn Dance which was under the direction of two freshmen girls, June Penn and Lois King. Yes, all in all, we spent a very worthwhile year at WWCE.



TOP ROW: *Meiers, Walser, Wejer, Robbins, Wenger, Sooter, Sharp.*

THIRD ROW: *Lind, Monson, Larson, Runestrand, Smith, McLeod.*

SECOND ROW: *Young, Lindstrom, Roser, Shannon, Mulford, Schaffert, Wayland.*

BOTTOM ROW: *Winnem, Quinlan.*



TOP ROW: *Taylor, Neigemann, Ness, Mather, Massey, Rosser, McCullem.*

THIRD ROW: *Turner, Zamzova, Williams, McGillivray, Nims, Lindbloom, Smith.*

SECOND ROW: *Niles, Wulff, Ritchie, Martin, Walter, Marmon, McLeod.*

BOTTOM ROW: *Wallace, Steele.*

TOP ROW: *Flick, Ramerman, Mollleston, Roberts.*

SECOND ROW: *Robbins, Knowles, Huling.*

BOTTOM ROW: *Cook, Anderson, Simpson, Harrison.*



TOP ROW: *Bunn, Kahns, Knutzen, Burger, McCarty.*

THIRD ROW: *Likkel, McEvoy, Sanstad, Lillibridge.*

SECOND ROW: *Keplinger, Smith, Sanstad, Lewis, Smitley.*

BOTTOM ROW: *Anderson, Schouweiler, Loudon, Huckins, Woodward, Tiffany, McRae.*





TOP ROW: Myre, Stradley, McIntosh, Richardson, Quam, Paradis, Nordberg.

THIRD ROW: Simpson, Porsch, Tyler, Loucks, Schenk, Paton, Robbins.

SECOND ROW: Peters, Martensen, Patton, Turek, McBain, Larsen, Nason.

BOTTOM ROW: Prigg, Provost, Rockey, Peck, Taylor, McArthur.



TOP ROW: Liverwash, Petrie, Yonlick, Wilson, Thompson, Rice, Smith.

THIRD ROW: Smith, Sease, Molleston, Oswald, Trivett, Wright, Schellebarger.

SECOND ROW: Still, Fisher, Underwood, Proctor, Swan, Norman, Rank, Reeck.

BOTTOM ROW: Mau, Waterman, Merrick, Siegrist.

TOP ROW: Rodenberger, Smith, Renfro, Zuck, McLachlan, Orphan, Rix.

THIRD ROW: Wood, Sundeen, Winders, Lang, Orrenmaa, Stamatis, McLane.

SECOND ROW: Pedersen, Smith, Sorenson, Strong, Rowand, Weythman, Williams.

BOTTOM ROW: Oman, Smith, Sly, Nunamaker, Puller, Porter, Shelter, Ruggles.



TOP ROW: Mattson, Umphrey, Ramaley, Thompson, Miller, Maloney.

SECOND ROW: Mapes, Lawson, Turner, Morse, Van De Wetering, Nims, Woodard, Lurie.

THIRD ROW: Montgomery, Taylor, Rothlisberg, Manning, Waterhouse, Tawes, MacDonald.

BOTTOM ROW: Laakson, Lehmann, Smith, Standish, Sutherland, Shultz, Van Moorhem.



TOP ROW: *Bowden, Borden, Boomman, Graham, Holland, Bratton, Clogston.*

THIRD ROW: *Ellington, Beasley, Jamerson, Follis, Garbareno, Burrell.*

SECOND ROW: *Armstrong, Emry, Albert, Bushong, Barnes, Kellner, Alexander, Burnaby.*

BOTTOM ROW: *Bannerman, Bondy.*



TOP ROW: *Chenette, Keyes, Craig, Davis, Bianchini, Brodahl, Hanlon.*

SECOND ROW: *Holtzheimer, Buchanan, DeHoog, DenAdel, Griffith, Anderson, Galbraith.*

BOTTOM ROW: *Harrison, Hinthorne, Christensen, Knowles, Arney, Baker, Huster, Griffith.*



TOP ROW: *Clements.*

THIRD ROW: *Green, Amdal, Blau- man, Holcomb, Baker, Johan- sen, Bingham.*

SECOND ROW: *Burgess, Hughes, Fickel, Keehr, DeBruler, Green.*

BOTTOM ROW: *James, Dillon, Dewar, Fehlhaver, Engler, Christie, Jensen, House, and Who?*



TOP ROW: *Cozza, Blake, Ander- son, Joachim, Brown, Bergh, Hays.*

THIRD ROW: *Beeston, Broad, Holk, Brown, Cary, Hanowell.*

SECOND ROW: *Knutson, Croy, Baker, Hardin, Griffin, Ham- merrud, Fields.*

BOTTOM ROW: *Foster, Croy, Funk, Guy, Johnson, Goodwin, Doherty.*



TOP ROW: *Gregor, Adams, Cotter, Dawe, Clarkson, Kanarr, Hess.*

SECOND ROW: *Call, R. Call, Hood, Halpern, Dorbolo, Eggers, Farver.*

BOTTOM ROW: *Goos, Danielson, Hanson, German, Hume, Huling, Haggblom, Johnson.*



TOP ROW: *Hansen, Hawley, Bennett, Benjamin, Cloud, Harris, Bean.*

SECOND ROW: *Hillyard, Crate, Gray, Johnstone, Fjeran, Groves, Crombie.*

BOTTOM ROW: *E. Dangerfield, Feola, D. Dangerfield, Hess, Englund, Anderson, Harwick, Eide*

TOP ROW: *Miller.*

FOURTH ROW: *Morrison, Reimer, Nelson, Olson, Sundstrom, H. Reimer, Peterson.*

THIRD ROW: *Sorenson, Vrieling, Swanson, Mansholt, Peter, Mitchell, Nordby.*

SECOND ROW: *Roberson, Vaux, Seelye, O'Halloran, Mjoenchell, Nordby.*



TOP ROW: *Stephan, Van De Riet, Weidkamp, Wolf, Rohlfing, Peterson, Nunamaker.*

THIRD ROW: *Trotto, Pagels, Sweeney, Leque, Martin, Welsh, Underhill.*

SECOND ROW: *Reece, Wood, McLane, Masterson, Wilbanks, Thal.*

BOTTOM ROW: *McCormick, Martin, Penn, Vanderburg.*



Winter quarter a Capella choir,
LEFT ROW: Bickford, Nordby,
Lewis, McLain, Sams, De-
Young, M. Cary, J. Peterson,
R. Peterson, Berg, Weirauch,
and Bernard Regier, Director.

THIRD ROW: Emry, Teichroew, G.
Johnson, Young, Masterson,
Brokaw, Bickford, Runstrand,
Morton, L. Livermore, Nims,
Winders, DeBruler, and Pome-
roy.

SECOND ROW: Albert, J. Liver-
more, Stockton, Hess, Barnes,
Pullar, Crook, Loudon, Wiberg,
Atwood, Tiffany, and Funk.

FRONT ROW: Englund, Porter,
M. Atwood, Jensen, McInnes,
Garbarena, Hammerud, D.
Smith, E. Wood, Soderstrom,
Pat Van Zandt, James, Swan-
son, Blekkink, Van Eaton,
Manning, Emery, Foster, and
Threlkeld.



Beautiful harmony and professional musicianship marked the a Capella choir this year. Under the direction of Bernard Regier, they furnished us with their excellent arrangements at the Christmas program in the stately hall of the library, the Choric Concert in winter quarter, and several student assemblies. Trips were often taken to service clubs by this group to display their talents.

Numerous well-known musicians are presented in the assemblies. Students are also given tickets to the Civic Music Association, where they have had the opportunity this year to hear artists of international reputation.



LEFT: These students were chosen this year by the Music Department as possessing outstanding ability. They are: Barbara Stockton, soprano; Maurice Cary, French horn player, Fred DeBruler, vocalist and trombonist with the Pep Band; Bob Moblo, leader of the Pep Band; Norma Jean Swan, violinist; and Glenn Bergh, tenor.

Good things come in small packages and when you say that you can't help but think of the girl's nonette, tutored by Miss Mira Booth, and the men's quartet, directed by Bernard Regier. They gave us some of the sweetest music on the hill.

The orchestra, led by Dr. Frank D'Andrea, met with the Bellingham Symphony Orchestra this year. They gained valuable experience and musical ability while playing with professional musicians, both making beautiful music together.

NONETTE: *Hanson, Hess, Soderstrom, R. Wilder, Teichroew, Funk, Porter, and J. Livermore.*

BELLINGHAM CIVIC SYMPHONY ORCHESTRA. WWCE MEMBERS: *Bergh, Cary, Crook, DeBruler, Emerson, Fields, Foster, Moblo, Nims, Porter, Radcliffe, E. Rank, M. Rank, Robbins, Ruggles, and Swan.*

QUARTET: *Lewis, Bergh, McInnes, Peterson, and DeBruler.*





The band, back on its feet for the first time since the war, supplied the College with plenty of pep and spirit. At the games, rallies, and assemblies they were there in their trim blue and white uniforms to lend a hand.

Then there was a bunch of fellas and a gal who were met with enthusiasm everywhere they went. The College Dance Band, natch — those solid gents and their leader Bob Moblo kept the joint jumpin'. And Mary Ann Teichroew and Fred DeBruler were the vocalists who made the crowd yell.

January 31 brought out "A Musical Fantasy", a musical talent assembly showing the progress of music from the prehistoric to the atomic age.

FALL QUARTER BAND: *Underwood, Lang Wefer, Danzer, House, Vaux, Ford, Rank, Foster, M. Anderson, D. Smith, LaGesse, Livermore, Hallert, Peter, McLachlan, Zuck, Redmond, D. Anderson, Fields, Cary, Moblo, Martinsen, Lehman, L. Williams, Jenft, Hume, Farver, Benjamin, Bergh, Drovos, DeBruler, Robbins, Hammer, Sease, Crombie, Morse, Van Zandt, Ingersoll, Cozza, Craig, Porter, J. Gooding, Atwood, Orphan, Bushong, Nunamaker, and Sams.* BELOW, THE DANCE BAND IN REHEARSAL: *Zuck, Hankins, Nims, Orphan, Prigg, Moblo, Clark, D. Hammer, and E. Robbins.*





Organized

The old college spirit is caught in the organized houses where students live college life together. All of them offer facilities for study and diversion and many a story remains unprinted on the men's bull sessions and the busy signal at 2961.



DANIELS HALL—TOP: *H. Thompson, reporter; Winders, vice-president and social chairman; Terrey, president; Lindbloom, secretary-treasurer.*

ALPHA SIGMA MU—ABOVE: *Turner, president; C. Brown, vice-president; Lindell, secretary; Tulin, treasurer.*

HOSPICE INN—UPPER RIGHT: *J. Driver, social chairman.*

SENIOR HALL—LOWER RIGHT, SEATED: *Castle, president; Penn, social chairman; STANDING: Wilbanks, vice-president; Guinn, inspector; Knowles, secretary-treasurer.*

HARBORVIEW—BELOW LEFT: *Urfer, president; Danielson, social chairman.*

BUSHNELL'S—UPPER RIGHT: *Jurgens, president; Lapp, secretary-treasurer; Price, vice-president.*

EDENS HALL—CENTER RIGHT: *Montgomery, reporter; Van Zandt, secretary-treasurer; Landers, president; P. Johnson, social chairman; Woodward, seated, vice-president.*

FOREST INN—RIGHT: *McCormick, president; P. Wood, social chairman.*



Houses

Regular meetings are held, each house having a group of officers. Social activity is also part of the organized house program, with a dance a quarter the usual procedure. Athletic competition is made possible with the intramural league in many sports, and traditions rank high in houses like Edens with their Wednesday night candle light supper and Christmas caroling.



Grease paint and lights . . .



LEFT: Fenton stewed, as family—Chetwood, Owen, and Cooper—look on unbelievably.
RIGHT: Cooker, Chetwood, M. Smith, Owen, and Burgess in dress rehearsal for "Dear Ruth."
BELOW: Versatile Lindell gives Actor Chetwood's make up a final touch before the first act.



Penthouse productions put on by the College usually turn out to be hilarious comedies, and "Dear Ruth" was no exception.

It was a farce concerning a typical teen-age girl who wrote letters to any and all service men and then signed her older sister's name to her mash notes.

Things reached a feverish pitch when Mike Smith, as the dashing young Army lieutenant came to visit Ruth, Irene Chetwood, and much to his surprise discovered Ruth wasn't Ruth at all but her little sister—Clarena Fenton, that is.

If "Dear Ruth" was an example of what we are to expect from the drama department we can only say, "Let it come!"



UPPER LEFT: Rehearsing for "Dear Ruth" are G. Burgess, Travenshek, Owen and Victor Hoppe, director. UPPER RIGHT: Tiffany, Mr. Hoppe, G. Burgess, Shellebarger, Wolf and Threlkeld. RIGHT: Travenshek, M. McLain, Tiffany, Hayes, Wolf, Threlkeld, Follis, Reimer, Rank, Burgess, Owen, and Shellebarger.



The house lights dimmed, a hush came over the audience and the curtains parted on the first performance of "The Corn Is Green," one of the finest plays ever presented by the drama department of the College.

It is difficult to say just who gave the best performance: Suda Jean Owen and John Shellebarger in the leads both turned in sterling portrayals as "Miss Moffat" and "Morgan Evans." The middle-aged spinster, "Miss Ronberry," was played by Jean Travenshek, who showed considerable talent, as did Phyllis Threlkeld in the role of troublesome "Bessie Watty." Glenn Burgess as the egotistical "Old Squire" will long be remembered for his unusual attire. Credit should be given where credit is due and in this case every member of the cast should be on the receiving end.

Special mention should be given Carl Lindell for the unusual lighting effects and the realistic sets. Victor Hoppe has just reason to be proud of the excellent directing and casting which made "The Corn Is Green" a success.



LEFT: Mickey and Rosemary Smith, co-chairmen for opening week. RIGHT: Jay Lapp, on campus tours, shows the freshmen "where."

Opening week set the pace for the largest enrollment of students since '39. People barely had time to catch their breath between usage tests, tours of Bellingham, sponsored by the Jay Cee's, picnics, and football games.

The first week was indeed a full one. Edens Hall started the ball rolling with a fireside held for frosh girls Sunday evening; the next day there were tests, two tours, and the Newcomers' Mixer which fostered not a few romances.

Between conferences and registration everyone was worn to a frazzle but no one was too tired to attend the picnic held on Sunset Hill. Wednesday dawned and found still more registration lines, more tests, and a faculty reception at Edens Hall.

The long-awaited day when classes began arrived Thursday, and just to top it off the AWS sponsored a tea in the afternoon. An all-school mixer on Friday, and the first football game of the 1946-47 season on Saturday climaxed a very eventful opening week.

LEFT: All school mixer during opening week had Carl Lindell eating fire during intermission. CENTER: Seemingly endless lines led to station B on registration day. RIGHT: Bellingham's Junior Chamber of Commerce turned out full force to tour newcomers around town.



On the Air

Lindell, Ann: Good afternoon, ladies and gentlemen. From the College on the Hill we bring you the College Newsweek in Review. Today we're going to tell you about our activities this year. We have Peggy Wood in the studio and she will attempt to give you a mike's eye view of the situation.

Wood: Thank you, Carl. Well, the material we featured in our broadcasts were sport reviews, faculty sketches, and notices on all social events.

Lindell: Who wrote your scripts for you, Peggy?

Wood: We did, under the supervision of Miss Alma

Madden, our instructor. Then each week one student was program editor.

Lindell: What did the job of editor include?

Wood: Main duties were checking each script for suitability, and timing, as well as making a schedule of the broadcast.

Lindell: Did the students learn much about professional broadcasting?

Wood: Oh yes. Study of broadcasting techniques and real scripts helped immensely to improve our programs.

Lindell: Thank you for a very interesting interview, Peggy. I'm certain that your ideas will meet with approval from many radio fans.



"College News In Review" broadcasting from the speech department.

And on the next page . . .

Night and day, life on the hill went gamboling by. Senior Hall's exchange dinners with Daniels . . . those last goodnights on the front porch at Edens . . . the friendly all-school mixers . . . the dance band, always ready with something smooth and dreamy or a swing special . . . the last minute rush to "dress up" for Wednesday night dinner . . . thinking up any plausible excuse just so you could make that library date . . . and those bull sessions in some fella's room. These things make up our nights. The vets' home life at Huntoon Drive . . . last minute cramming for finals in the AWS room . . . midday rush to the Dog House for some of Ray's specialties . . . the AWS drive to support little Germaine, our adopted war orphan . . . that lounge and those pinochle games . . . the tantalizing smell of fresh wax that spells Ski Shop to those avid schuss fans . . . time for a quick coke between classes . . . Watching the progress of the new Men's Dorm . . . These made up our days.







While you sit . . .

At the Table of Time partaking of food for thought, guests, departing one by one, leave you the scraps of memories. Light-hearted chatter . . . deep confidences . . . gay repartee. Wisdom from teachers . . . talk of degrees . . . speeches from editors . . . banter of war vets . . . the prattle of sophomores. We give you these, while you sit at the Table of Time.



Sophomores . . . Coming up fast



LEFT TO RIGHT: Gloria Carey, secretary; Arlene Swanson, treasurer; Dr. Merle S. Kuder, Sophomore adviser; and Donna Redmond, vice-president. MIDDLE: Sophomore class president, Patricia Temperly Van Zandt. RIGHT: Down at Lapp's Clip Joint, Al Adams is given the once over for the photographer's sake by manager Jay Lapp and sophomores Kathleen Golly and John Clark.

Short in number, but long in enthusiasm, describes the sophomores, class of '49. Leaving their freshman year in the dust the sophomores assumed important positions in campus activities.

Pat Van Zandt, president, was succeeded by vice-president Donna Redmond when Pat left school for a marital career. Gloria Carey was the ever busy secretary-treasurer.

The big affair of the year for the sophs was the class scavenger hunt and dance held during the fall quarter. Hard working Hellen Kelso was in charge of arrangements. Whenever there were workers needed on committees for dances, drives, or details you could count on the sophomores to be right in there pitching. In fact, two enterprising members of the class were co-chairmen of Campus Day — yes, Lee Thomas and Jack Driver.

In the world of sports they had some mighty fine stars, namely Les Winders and Frank Gayda. Winner of the basketball inspirational award was that pint-sized package of dynamite, Jack Ross. Bob "Pinky" Erickson, in his second year at WWC, was also one of our most dependable players.

In all fairness to the other classes on the campus we must say that they did their bit too, but the sophomores were about the most active, energetic, go-gettingist class in school.



BACK ROW: *Keehr, Sleem, Hoover, Ingersoll, Partlow, Burton, Driver.*
 THIRD ROW: *Cochran, Jackson, Longan, Deneui, Teichroew, Hunt.*
 SECOND ROW: *Jensen, Hoag, Pierce, Lundeen, Wittler, Carey, Hays.*
 FRONT ROW: *Kelso, Cozza, Butler.*

BACK ROW: *Hallert, Medema, Britton, Erickson.*
 THIRD ROW: *Peterson, Pilon, Curtis, Ross.*
 SECOND ROW: *Johnston, Lutro, Van Zandt, Redmond, Maricle, Haller.*
 FRONT ROW: *Pomeroy, Burgess, Brockmier, Erickson.*



BACK ROW: *Miller, Sams, DeYoung, Johnson, Bowsher, Brand, Keppler.*
 SECOND ROW: *Walker, Strotz, Gruwer, Wittler, Richards, Pequette, King, Rogers.*
 FRONT ROW: *Cecotti, Golly, Smith, Swanson, Van Eaton, Attwood, Freen, Jackson, Smith.*

BACK ROW: *C. Baker*
 THIRD ROW: *Johnson, Jenft, Ford, Martin, Freeberg, Hansen.*
 SECOND ROW: *Dixon, Graham, Huggins, German, Hubbard, Fallis, Meiers.*
 FRONT ROW: *Morton, Livermore, Larson, Long, Englert, Zanassi, Rank, Ryan.*

*We cut legally,
that's
Campus Day*



It all started in the month of April when those famous showers are supposed to bring May flowers. But instead they brought forth the most luxurious crop of whiskers ever to be witnessed in these parts since Granddaddy took after the Indians. The cause of it all was, of course, Campus Day, which was held May 21.

Highlights of the big day were the hilarious skits put on by the clubs in the morning assembly, the beard growing contest, and a bathing beauty contest from which was chosen a Mr. America.

After the assembly, all hied themselves to Lake Whatcom where sack races, pie-eating contests, and the traditional baseball game between the faculty and students took place. A climax to the lazy, laugh-provoking day was the dance held on the gaily decorated tennis court.

Pictured below are scenes from the 1946 Campus Day. UPPER LEFT: Photography fiends take character studies of the beard growing contest winner. UPPER RIGHT: Faculty talk over the price of hypo between shots. CENTER: Valkyrie lovelies give out with the can-can and win first place in the Campus Day assembly. LOWER LEFT: Those who ate pie lost face. LOWER RIGHT: And, yes, games for young and old.



By the week WW Collegian

Motivating force of the student body, the WWCollegian is published in an attempt to be of real service to the student body. Edited by Monty Jones and Warren Beecroft, the WWCollegian soon became a stimulating weekly

Solid Citizen Vern Matthews quickly moved up to associate editor along with John Fallis, feature page editor, and Dick Burrell, sports page editor. Peggy Wood and Janet Siegrist were co-editors of the women's page, and hard working Bob Dickson was copy editor. June White, business manager, served as the morale booster.

Largest edition was the 10,000 sent to high school graduates, and articles such as "Letting Off Steam" made the WWCollegian active and interesting.



UPPER RIGHT: Rosser, Penn, Beecroft, Sanford, B. Smith, Tyler, Bickford, Beasley, Woodward, D. Jones, Gray, Mather, and E. Brown in the newsroom. MIDDLE RIGHT: Beecroft, M. Jones, Wood, Printer Dick Cox, Siegrist, Matthews, Curtis, McArthur, Burrell, and Hardman, arranging layouts at the print shop.



ABOVE: WWCollegian Business Manager June White makes intelligent look for camera pose.

LEFT: Monty Jones and Warren Beecroft, WWCollegian co-editors, muse over corny jokes for next week's edition.

Even though their work on the WWCollegian and Klipsun kept student publications staffs rushed, they somehow still found time for more activities — a need and a place for them in WWC life.

The Navigator, a guide for entering freshmen, was compiled and edited by June White . . . and in the Homecoming booklet, editor Warren Beecroft gave an idea of how the game might run. One of the most important undertakings of the year was the revival of the Northwest Intercollegiate Press Conference, fall quarter, with WWCE as hosts. During winter quarter "Profile," a Klipsun by-product, was born as a student directory. The getting-better-and-better "Writer," published by the English department, gave every student his fling at seeing his writings in print. Along with the successful Publication Prom was the Publications banquet held on Klipsun "D" day and the ever popular parties held at "Ma" Burnet's home.

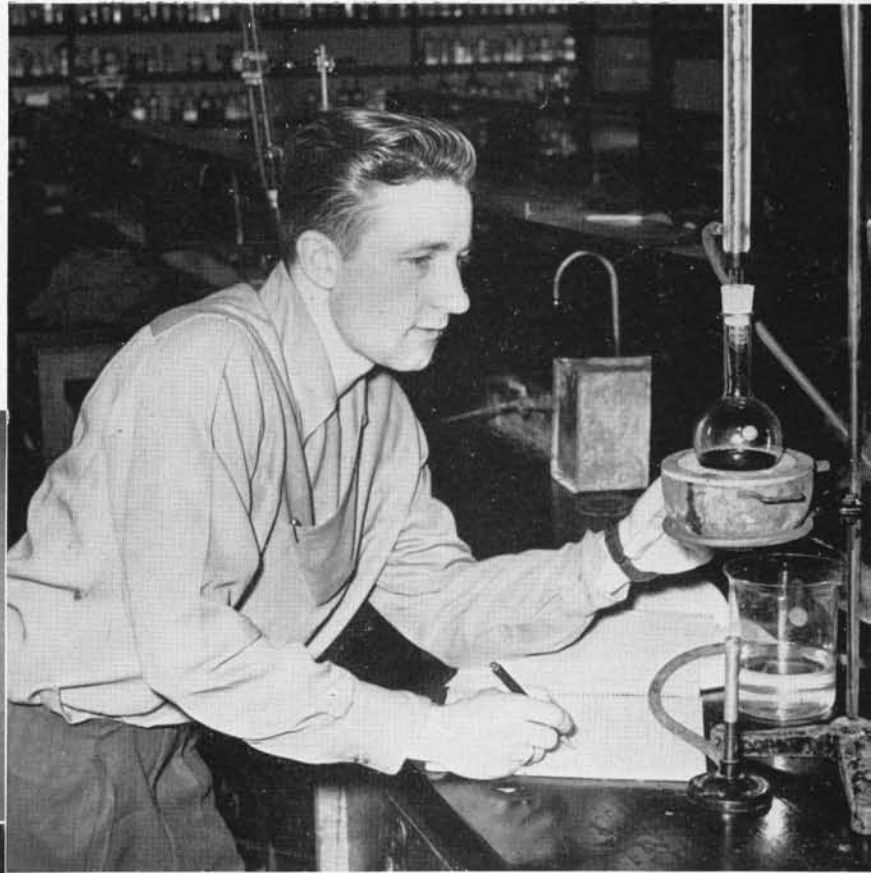
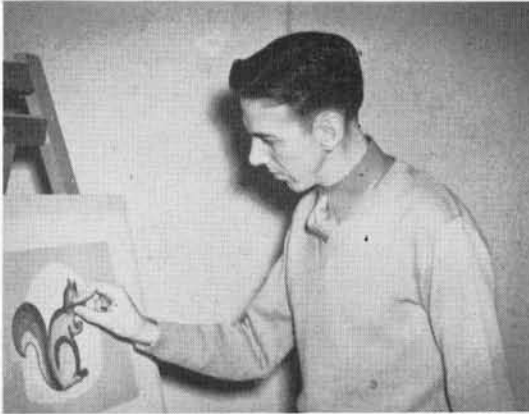


By the year The Klipsun

To these loyalists the progress of the book is due. Betty McLeod, art editor and all around assistant; Betty Rosser, faculty section; Barbara Cozza, freshmen section; Jerry Halpern, sophomore section; Kathleen Golly, junior section and exchange editor, and Warren Beecroft, senior section. Nancy Merrick did most of the cataloguing, along with helping Roland Richards, business manager. Mildred Stange and Bob Dickson, gave of their talents generously to produce much of the copy. Photography, always an unsurmountable obstacle in a yearbook, was handled in nerve-racking relay by Yeager Studio, Bob Haugen, Wayne Craig, Ruth Norman, and Roland Richards. The free hand drawing and the murals in the office were done by that clever perfectionist, Bettyjane Christie.

TOP LEFT: Clark Brown, editor, and Betty McLeod, art editor. TOP RIGHT: Roland Richards, business manager. BOTTOM: Winter quarter staff, back row: Craig, Halpern, K. Golly, Beecroft, Whittler, and Turner; second row: Eide, Christie, and Freeberg; front row: M. Burgess, Merrick, Montgomery, B. Cozza, and Rosser.

RIGHT: In the chemistry lab, Roland Richards looks for reactions and notes his experiments. BELOW: Wally Wilson draws in the art department. A cat is dissected in anatomy class. Students planning projects in classes for mechanical drawing.



For many years the college on the hill has offered courses for student nurses, making it possible for them to complete their classroom training for their profession on this campus.

This year the non-diploma curriculum at WWCE has been greatly expanded because of the heavy enrollment of returning veterans. Students now find it possible to complete their first years of pre-medicine, journalism, business administration, college work in the fields of engineering, chemistry, and others. For the first time in its history, WWCE has an enrollment of four diploma students to each five non-diploma students.

An act passed by the 1947 state legislature empowers the college to grant bachelor's degree in liberal arts. In the future, therefore, it is anticipated that WWCE will have enrolled a much larger proportion of non-diploma students.



LEFT: Norm Dahl shows his sixth graders the card catalogue in the children's library. BELOW: Bob Dickson points out the effects of weather on the world. Norm Nelson and Bob Ludwig play ball. Jean Landers caught in art time.



Although diploma students are in the minority this year, the primary purpose of WWCE is to train future teachers. Not only are the student teaching facilities among the best to be found anywhere, but the student teachers enjoy a more complete period of practice teaching than is required in most teachers' colleges.

After having been a diploma student for about three years, the big moment finally arrives and one becomes a student teacher. Many and varied are the tasks which may have to be performed at the campus school: teaching ninth graders to type; leading kindergarteners down to the bus stop; or perhaps playing baseball with the boys out on the playground.

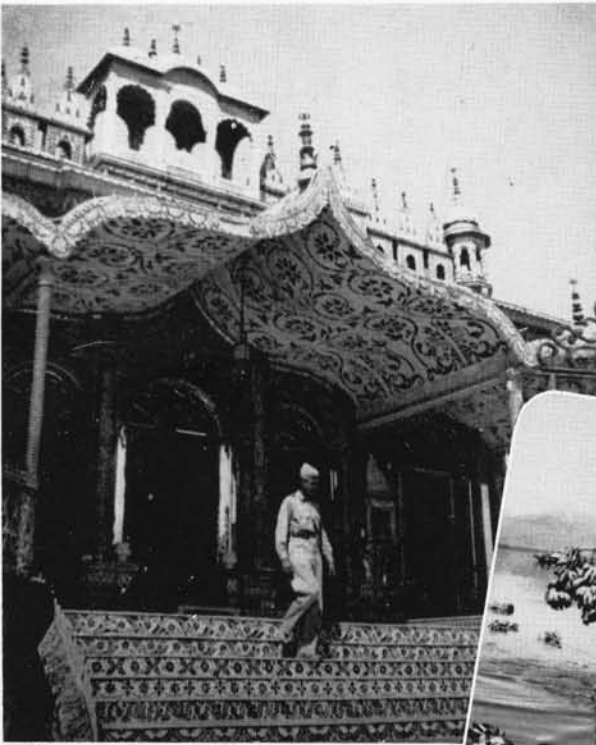
Then, at last, the four years of college are over; the coveted degree achieved; and still more young teachers are out on their own.



As you were . . .

Only yesterday it was ghostly convoys of darkened ships lurching through the rough, gray Atlantic; tired, dirty, fight-weary men trudging through dank, humid jungles; overheated motors roaring insanely; oil-spattered, flak-ridden bombers limping back; and over all that terrible urgency . . . you gotta keep going . . . you gotta keep going.

"Out of the War in '44," "Back alive in '45," "The Golden Gate in '48 . . . was there no end to this hell . . . and then when everybody was tired . . . tired of everything . . . peace came.



Austrian Alps, Brenner Pass



As you are . . .

Today the lush, green campus lies peaceful in the morning sun. Along the curving walks, men amble by in tweeds, cords and gabardines. Packed away in mothballs, a grim reminder of lost years, are the blues, suntans, pinks, and khakis.

Now it is pencils instead of rifles; books in place of bombs; massive buildings, not tiny ships; love instead of hate; peace instead of war.

The fighting is over, the killing war won, but our battle for peace has just begun.





Whether you act . . .

On the Stage of Time, or only sit looking on, you will wait for the curtains to part revealing the actors to audience, audience to actors. We draw the curtains apart to present you the characters . . . princesses, people, playboys . . . actors alone and in groups, leading men and ladies, dancing girls, chorus boys, proms and papers, juveniles and juniors . . . now appearing on the Stage of Time.



Behold the Juniors as they emerge



DALE ACKLEY—Bellingham; Norsemen.

GENE ADAMS—Bellingham; Fall Quarter Dance Chairman, Junior-Senior Class; Blue Barnacles; WRA.

DOLORES ANDERSON—Hoquiam; Winter Quarter Dance Committee, Edens Hall; Riding Manager, WRA; AWS.



CARROLL BAKER—Bellingham; Norsemen.

ZELMA BLEKKINK—Vashon; President, AWS; Valkyrie; Who's Who, American Universities and Colleges.

HOWARD BROAD—Bellingham; Norsemen.



KATHLEEN BRODAHL—Ferndale; Freshmen Scholarship Cup; Treasurer, AWS; Blue Triangle.

MARIDEAN BROMLEY—Sumas; AWS.

BEVERLY CAMERON—Seattle; Transfer from WSC; Choir; Co-chairman Winter Dance, Edens Hall.



PATRICIA CASTLE—Vancouver; President, Senior Hall; College Day Activities, AWS; Schussken Club.

BERNICE CHATTERTON—Bellingham; Vice-president, Valkyrie; Junior Princess, Homecoming; Commission, AWS.

LUCY CHRISTOPHER—Port Townsend; Vice-president, IRC; Secretary, CCF; Secretary, ICC.



Funful RUTHE WILDER is living proof that statistics aren't wrong when they say that the happiest of marriages are those in which the husband and wife are on equal intellectual footing. To maintain this ideal state, Ruth is attending WWC along with her husband, Bill . . . The welcoming hail of "Hey, Doc," will bring an instant friendly response from genial WADE HAGGARD. Ambidextrous Wade proved his abilities while co-chairman of the 1946 Homecoming program.

from first taste of their profession

Likeable, capable BETTY ROSSER possesses a radiant, friendly personality. Betty has worked hard in many activities, and was one of those selected for the Who's Who Among Students in American Colleges and Universities. Another Who's Who selection is big, extrovertish JIM SANFORD. Jim takes a prominent part on the Board of Control and in other college activities. That's our boy Jim.



ETHEL CROOK—Bellingham; AWS.

ROBERT DICKSON—Bellingham; Copy Editor, WWCollegian; Vice-president, Sophomore Class; Norsemen.

JACK DURANCEAU—Seattle; Norsemen.



CARL ERICKSON—Bellingham; Norsemen.

CLARENA FENTON—Arlington; Secretary, Blue Triangle; "Dear Ruth"; Co-chairman Winter Dance, Edens Hall.

PAUL FOSTER—Bellingham; W Club; Norsemen.



ROBERT FRAZIER—Bellingham; President, Norsemen; W Club; Varsity Basketball.

PATRICIA FROMBLY THOMPSON—Bellingham; Secretary, Sophomore Class; Secretary, Valkyrie; Social Chairman, AWS.

JEAN FULLNER—Everson; Commission, AWS; Valkyrie; Cabinet, WRA.



AILEEN GREBSTAD—Petersburg, Alaska; AWS.

WADE HAGGARD—Bellingham; Co-chairman Homecoming; Co-chairman Campus Day; Executive Council, Norsemen.

ROBERT HAUGEN—Bellingham; Photographer, WWCollegian; Photographer, Klipsun; Norsemen.



Only one year to go, then



Edens Hall claims the distinction of housing attractive CLARENA FENTON of Arlington. A future teacher, lovely, studious Clarena has found time to engage in many of the social activities which are so much a part of college life . . . Winner of the 1946 inspiration award for his outstanding contribution to football is LES SMITH. Extremely friendly and very cooperative, Les is one of the best known figures on the campus.



WILLIAM HUNT—Bellingham; Norsemen.

LEOLA HYATT JOHNSTON—Shelton; Board of Control; Princess, Publications Prom; Women's Page Editor, WWColegian.

JANICE JACOBY—Toledo; Blue Triangle; Blue Barnacles; WRA.

GEORGE JURGENS—Snohomish; Intramural Bowling; Norsemen.

JACK KNUPPENBURG — Bellingham; Norsemen.

ALICE McKELVEY—Bellingham; AWS.

JEAN McKELVY—Berkeley, California; Transfer from U. of Cal.; Social Chairman, Edens Hall; Chairman, ACE Tea.

ROBERT MOBLO—Bellingham; Director, Pep Band; Choir; Chairman, Opening Week All-school Mixer.

MARTHA MONAGHAN — Bellingham; "Dear Ruth"; Secretary, Freshman Class; Valkyrie.

DOREENE MURPHY—Aberdeen; AWS; WRA.

ROY NELSON — Bellingham; Vice - president, Freshman Class; Assembly Committee; Norsemen.

SUDA JEAN OWEN—Bellingham; "Dear Ruth"; "The Corn Is Green"; AWS.

class rooms of their own

BETTY PEASTER—Klamath Falls, Oregon; Winter Quarter Dance Committee, Edens Hall; Homecoming Skit, Edens Hall; Princess, Publications Prom.

CHARLES REINHART—Bellingham; Manager, Varsity Basketball; Norsemen.

BETTY ROSSER—Bellingham; President, Sophomore Class; President, Valkyrie; Who's Who, American Universities and Colleges.

JAMES SANFORD—Bellingham; Board of Control; Representative, PNCC; Who's Who, American Universities and Colleges.

PATRICIA SHANNON—Bellingham; Blue Triangle; AWS; WRA.

JANE SMART—Bellingham; Schussken; AWS.

MIKE SMITH — Bellingham; "Dear Ruth"; Norsemen.

LES SMITH—Longview; Football Inspirational Award; W Club; Norsemen.

BARBARA SPLIDSBOL—Portland, Oregon; AWS.

BARBARA STOCKTON—Bellingham; Secretary-treasurer, Junior-Senior Class; Vice-president, Valkyrie; Chairman, Graduation Tea and Fashion Show.

PHILIP STODDARD—Bellingham; Norsemen.

CYNTHIA SYTSMA—Sumas; Chairman, Mixed Rec; Winter Quarter Dance Committee, Edens Hall; Homecoming Skit, Edens Hall.



Returning from "The bright blue yonder" to the green campus of WWC is ROY NELSON. He's a good looking fellow, who uses his head while he studies. Right now he's student teaching in the fifth grade of the campus school. Energetic, petite PAT FROMBLY THOMPSON has taken a recess from college life to embark upon a career of marriage. While in attendance, Pat, always an active WWC booster, took part in many clubs and extra-curricular events.





SHIRLEY teHENNEPE—Ridgefield, Oregon; Transfer from Multnomah College; Blue Bar-nacles; WRA.

DOUGLAS THOMPSON—Everson; Varsity Track; W Club; WWCollegian.

JOHN THOMMASEN—Bellingham; Scholarship Society; W Club; CCF.

ALLAN THON—Bellingham; Norsemen.

HARVEY THORNTON—Bellingham; Varsity Football; W Club; President, Camera Club.

JEAN TRAVENSHEK—Bellingham; Song Leader; "Blithe Spirit"; "The Corn Is Green"

CORA URFER—Everson; AWS.

RICHARD VERRILL—Bellingham; Norsemen.

JUNE WHITE—Van Zandt; WWCollegian Business Manager; Commission, AWS; Valkyrie.

RUTHE WILDER—Longview; Valkyrie; AWS.

WILLIAM WILDER—Longview; Board of Control; President, Freshman Class; Who's Who, American Universities and Colleges.

RAY WOLSTENHOLME—Seattle; Norsemen.

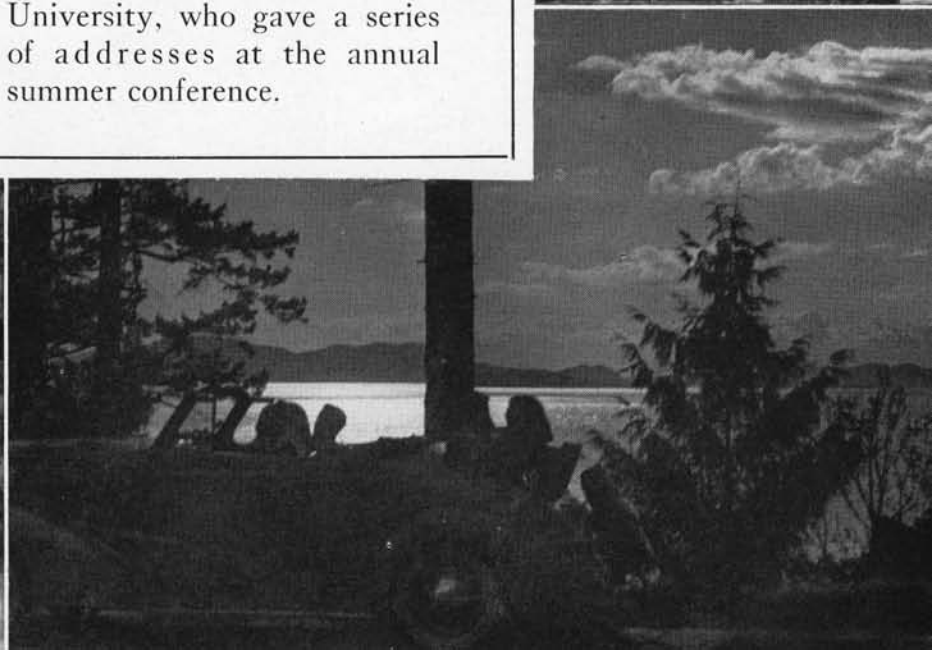
EUNICE WOOD—Chehalis; CCF; WRA; AWS.

GERRY WOODWARD—Olympia; Vice-president, Edens Hall; Sports Manager, WRA; Valkyrie.



At Summer School, '46

An unusually large number of students attended WWC during July and August. The group was composed of many year-round students, in addition to teachers working for their degrees. Dr. E. A. Bond presided as usual at the salmon bake at Larrabee State Park. During the Fourth of July holidays a small but valiant group ascended Mount Baker. The highlight of the summer was the brief visit of General Wainwright to the campus. Another prominent visitor was Dr. Hollis L. Caswell of Columbia University, who gave a series of addresses at the annual summer conference.





TOP: Murals under construction. BOTTOM: Grand march front and center. LEFT: Wally Westmore, Hollywood make-up artist, chose the Princess of the Eighth Publications Prom from the photographs appearing on these pages.

With the largest crowd ever seen at a Publications Prom, the eighth annual Publications Prom hit a new high with 1,000 in attendance. Captivating June Danielson, chosen as Prom Princess by Wally Westmore, make-up head of Paramount Studios in Hollywood, reigned for one evening with her court of attractive princesses. An old fashioned theme of silhouettes was carried out in ebony and pink by the decoration committee headed by Betty McLeod. Betty-jane Christie and Maryjune Eide painted the quaint but striking murals.

Under the guidance of Vern Matthews, coordinator, all members of the publications staffs enthusiastically joined to make this Prom a success. Finances were under the capable supervision of Betty Rosser, Prom business manager, while editors Warren Beecroft, Monty Jones, and Clark Brown served as general chairmen of the various committees.



PORTRAITS BY SANDISON

OPPOSITE PAGE: Princess June Danielson. COURT FOR THE EIGHTH PUBLICATIONS PROM CONSISTED OF—TOP ROW: Gloria Carey, Sharon Wallace, Mimi Anderson; MIDDLE ROW: Lois King, Doreen and Edith Dangerfield, Marijune Eide; BOTTOM ROW: Lee Brokaw, Elizabeth Emery and Pedie Johnston.



We Call

IRC . . . Timely

Fathered by the Carnegie Foundation for International Peace, the International Relations club belongs to a large and interesting family. Their members are sincerely interested in current world affairs and wish to gain a better understanding of their implications. This club has spent a busy year under the leadership of Miss Nora Cummins, adviser. The club officers were: Jack Francis, president; Arnold Lahti, vice-president; and Russell Skidmore, secretary-treasurer.



ABOVE—IRC—Ingersoll, Sanstad, Miss Cummins, Hyatt, Spiidsboel, Loomis, and Skidmore.

COLHECON . . . Domestic

The Colheconomists have spent an active year listening to talks, observing demonstrations, and holding discussions on home economics problems. Arlene Swanson and Dorothy McLane were chosen to represent the club at the home economics club conference which was held at Central Washington Collgee at Ellensburg. The club officers were: Arlene Swanson, president; June Danielson, vice-president; and Virginia Zanassi, secretary-treasurer. Miss Lucille Reiman and Miss Linda Countryman were the club advisers.

UPPER—COLHECONOMISTS—STANDING: Miss Reiman, Miss Countryman, Swanson, and Zanassi. SEATED: McLane, Young, Huckins, K. Golly, Martin, M. Golly, Wood, Quinlan, Theg, Strotz, Wittler, Loomis, Guy, Taylor, Sanstad, and German.

LOWER—CCF—Shannon, Christopher, W. Rairdon, Porter, Paton, D. Rairdon, Miss Breakey and Scheib.



CCF . . . Inspiring

The immediate aim of the College Christian Fellowship is to promote Christian fellowship among the students on the campus. The club met weekly this year for Bible discussions and prayer meetings with officers Joe Scheib, president; Cliff Johnson, vice-president; and Lucy Christopher, secretary-treasurer, for Fall quarter. Advisers were Miss Hazel Breakey and Miss May Mead.



Them Clubs

ACE . . . Professional

Filling the need for a professional club on the campus was the Association of Childhood Education. Officers this year were: Hellen Kelso, president; Frank Holbrook, vice-president; Donna Redmond, secretary; Faye Lindberg, treasurer; and Miss Edna Channer, adviser. Meetings were held to discuss problems in the teaching profession and the main project of the club was to make toys for the children in Europe. Club aims were to stimulate members to be better teachers.



ACE—FRONT ROW: Soderstrom, Seelye, Lutro, Kelso, Redmond, and Lindberg. BACK ROW: D. Barnhill, Young, Baker, Holbrook, Hooper, LaLone, Shannon, Fenton, Loomis, Grebstad, McKelvy, Cameron and G. Driver.

UPPER—VALKYRIE—FRONT ROW: Rosser, B. Smith, White, Chatterton, and Blekkink. SECOND ROW: Woodward, Thomas, D. Barnhill, Stillman, and Kelso. THIRD ROW: Strotz, Wilder, Lutro, Stockton, and McKelvy. FOURTH ROW: Miss Herrick, G. Driver, Redmond, Van Zandt, and Swanson. BACK ROW: Johnston, Landers, Carey, Cozza, and Tiechroew.

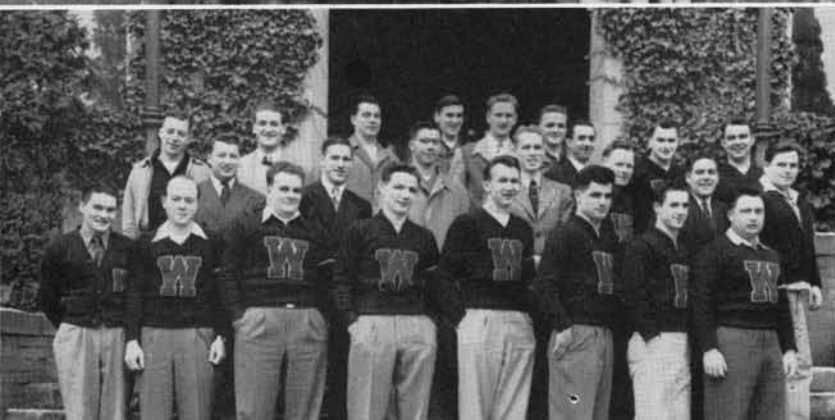
LOWER—W CLUB—FRONT ROW: Lahti, Jenft, Sanford, Leu, F. Gayda, Iraola, Winders, and Keown. SECOND ROW: Witt, D. Peterson, Clayton, D. Brown, Wilder, Loop, and Thornton. THIRD ROW: Lindbloom, Packard, Poe, Thom-masen, Dahl, Thompson, and W. Brown. BACK ROW: Ross and Dodge.

VALKYRIE . . . Vim

A royal blue sweater plus a club emblem—Valkyrie uniforms. Organized to support school activities enthusiastically, to display and encourage high standards of social conduct and womanliness, the club was responsible for rooting sections at both football and basketball games. This year, under President Betty Rosser, members have actively supported the teams, conducted campus tours, and stood squarely behind school enterprises.

W CLUB . . . Vigor

Membership in this organization is limited to the letter-earning men, who wear a large white W on a blue sweater. Under the leadership of Herb Witt, the club managed the big Homecoming dance and showed several movies for the assembly. Along with Witt as prexy, Les Winders served as vice-president, and Jim Sanford as secretary-treasurer.



RIGHT—BACK ROW: *Miss Powers, Blekkink, and D. Barnhill.* MIDDLE ROW: *Redmond, Lindberg, Hoag, Kelso, Strotz, Swanson, and Nunamaker.* FRONT ROW: *Thomas, Carey, and Landers.* IN THE CIRCLE: *Zelma Blekkink, AWS prexy.* EXTREME RIGHT: *Donna Redmond and Miss Powers serve for the AWS Thursday afternoon tea.*



Associated Women Students have concluded a busy and eventful year under the leadership of the advisers, Miss Lorraine Powers and Miss Mira Booth, and its capable president Zelma Blekkink. Other officers were: Donelda Barnhill, vice-president; Faye Lindberg, treasurer; and Donna Redmond, secretary.

A tolo, Snowflake Fantasy, was given in December, and another dance during spring quarter. In addition, AWS members were hostesses twice a month, when they entertained students and faculty at tea in their lounge.

The little French girl, Germaine, adopted by the Associated Women Students last year, was supported by the group for another year.

Donelda Barnhill and Zelma Blekkink represented the club at the High School Leaders' Conference at Pullman in November. A conference for high school girls was held at WWCE in February, under the chairmanship of Gerry Woodward. The girls were conducted on tours of the campus. After lunch they participated in discussion groups. The highlight of the afternoon was a tea and fashion show in the Blue Room of Edens Hall.



ABOVE: *Bob Frazier, Norsemen prexy.*
CENTER: *Norsemen commission: Haggard, L. Smith, B. Brown, Brockmier, J. Driver, and Mr. Bill McDonald, adviser.*

The Norsemen, the organization comprising all of the men students enrolled in school, had Mr. Bill McDonald, dean of men, as their adviser, and Bob Frazier as president.

Their main activities this year were a ball held during fall quarter, a rec hour winter quarter, a spring cruise and sports dance spring quarter.

Other officers of the club were: Bill Brown, vice-president; Laverne Brockmier, secretary; Jack Driver, treasurer.



ABOVE: *Intermission at the Norsemen sponsored semi-formal, held at the YMCA, during fall quarter.*



BLUE TRIANGLE . . . Service

Affiliated with the YWCA, the Blue Triangle's main project was the successful support of the World Student Service Fund to aid colleges in other lands. Meetings are held twice monthly either in Edens Hall Blue room or in the club house on the hill. Officers this year were: Margaret Lutro, president; Doris Hoag, vice-president; Clarena Fenton, secretary; Jeannine Seelye, treasurer; and Miss Hazel Plympton, adviser.

ABOVE—BLUE TRIANGLE—FRONT ROW: Wallace, Bondy, Hoag, Fenton, Miss Plympton, Lutro, Seelye, and Still. SECOND ROW: Woodward, McLane, Baker, Soderstrom, Shannon, P. Johnston, Taylor, and McKelvy. THIRD ROW: Strotz, Theg, Swanson, McLeod, Loomis, Lang, Young, Redmond, Kelso, and Reeck. FOURTH ROW: McInnis, Manning, Bushong, Grebstad, Hanson, Cameron, Quinlan, and G. Driver. TOP ROW: Sundeen, Hume, Huster, Masterson, Zanassi, and Wood.

UPPER—INTERCLUB COUNCIL—FRONT ROW: Lahti, Rosser, Blekkink, Witt, and Scheib. SECOND ROW: G. Driver, Lutro, Kelso, Swanson, and Winders. BACK ROW: B. Brown, D. Brown, and Van Zandt.

LOWER—SCHUSSKEN—FRONT ROW: Travenshek, K. Smith, Norman, Merrick, Lillis, Van Eaton, and Reeck. SECOND ROW: German, Christensen, Cozza, Hiatt, Reeck, Barnes, and Inge. THIRD ROW: Peck, Swan, Waterhouse, Hume, and Lindstrom. FOURTH ROW: Bell, Hillyard, Armstrong, Turner, Orphan, and Brokaw. FIFTH ROW: Teichroew and Cory. SIXTH ROW: Foster, Thompson, Dillon, Arney, Long, and Curtis. BACK ROW: Martinsen, Garbareno, Hood, Peters, and Quam.

ICC . . . Supervision

One of the administrative organizations of the student body, the Interclub Council, composed of presidents of all clubs on the campus, found most of its duties in three directions: supervision of extra-curricular activities, orientation of new students in the extra-curricular program, and the direction of student body nominating convention. ICC officers were: Don Brown, president; Bob Frazier, vice-president; Margaret Lutro, secretary; Miss Nora Cummins and Miss Lorraine Powers, advisers.

SCHUSSKEN . . . Spills

Back again after the war years is the Schussken club for those who enjoy the happy treks to Mount Baker throughout the winter. Officers this year were: Francis Cory, president; Gene Curtis, vice-president; Betsy Peck, secretary; Robin Hood, treasurer; and Miss Marjorie Muffly and Mr. Ralph Simonds, advisers. The club chartered buses to take the members, totaling over 150, to the Mount Baker skiing area for the day, as well as for overnight trips.

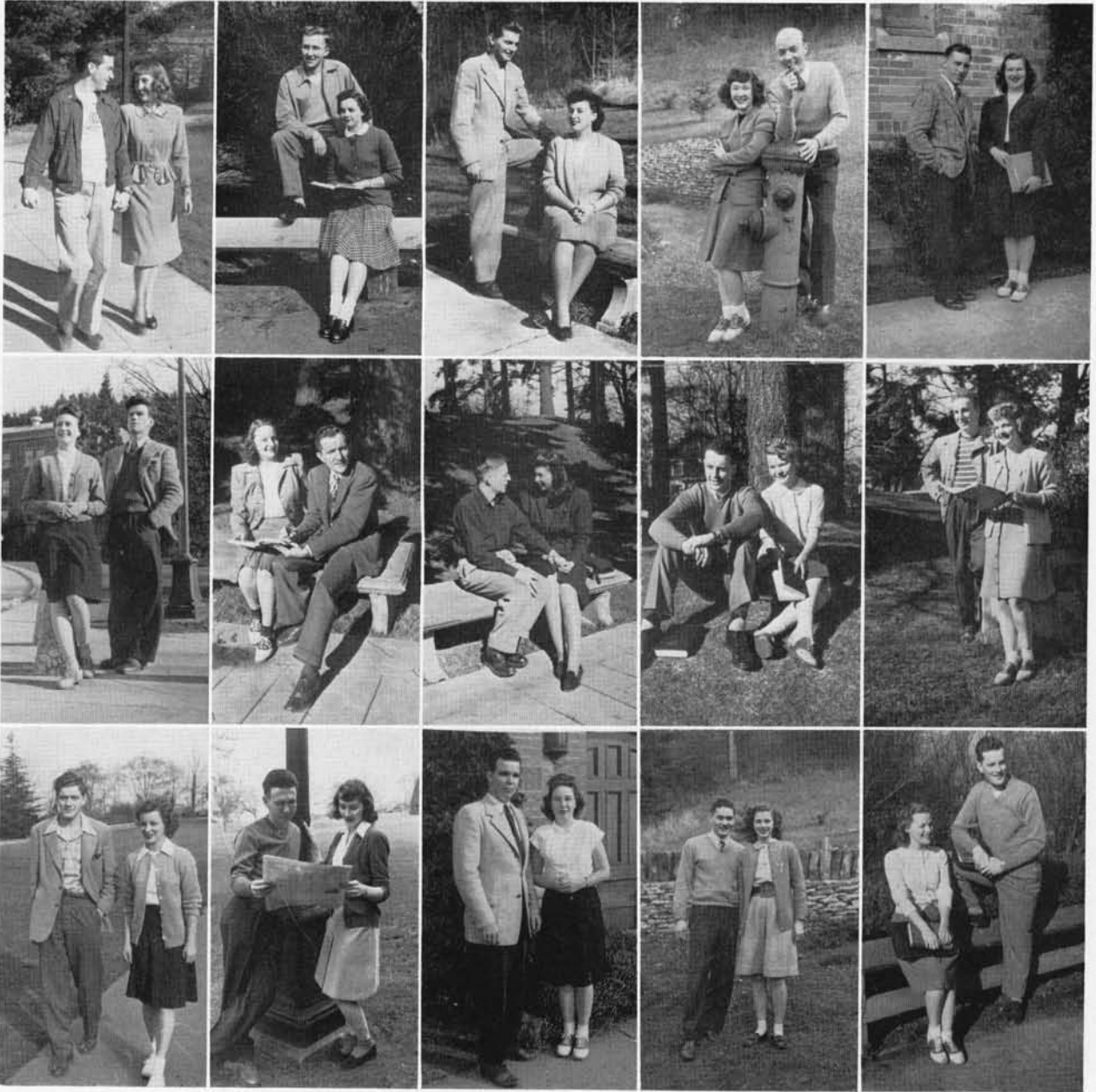
CAMERA CLUB . . . Snaps

(Organized too late for picture)

Officers this year were: Harvey Thornton, president; Russ Skidmore, vice-president; Shirley Gray, secretary-treasurer; and Dr. Morton Renshaw, adviser.



The Sporadic Element



TOP ROW, LEFT TO RIGHT: *Enthusiastic* . . . EDGAR JOHNSTON, PEDIE HIATT JOHNSTON, Peppy, go-getting boosters of WWC • *Sincere* . . . MERLE BUNN, KATHERINE FREEMAN—Understanding; friends to all • *Dramatic* . . . GLENN BURGESS, SUDA OWEN—Talented active participants in all stage productions • *Personable* . . . COLLEEN HUCKINS, VIC HARKOFF—Tops in personality; witty Colleen; clever Vic • *Athletic* . . . DEL PETERSON, MARGARET STROTZ—Clean-cut Del; likable Margaret; always good sports • SECOND ROW: *Smart* . . . MARIE PEQUETTE, JACK HAYWARD—Intelligent; very high scholarship rating • *Executive* . . . MARGARET LUTRO, BOB DICKSON—Hardworking; always capable • *Domestic* . . . AL AND JEAN ADAMS—Seldom apart; typical young marrieds on the campus • *Artistic* . . . JACK GRAHAM, MARIJUNE EIDE—Always helpful on the decoration end of proms and programs • *Musical* . . . JACK NIMS, MARY ANN TEICHROEW—Interested in anything from Bach to boogie woogie • THIRD ROW: *Inspirational* . . . CARL LINDELL, MIMI ANDERSON—Willing and cooperative; making this a bigger, better school • *Journalistic* VERN MATTHEWS, PEGGY WOOD—Real “galley” slaves; devoting time and energy to the WWCollegian • *Loyal* . . . GEORGE BURTON, KATHLEEN GOLLY—True to Western; fighting spirit • *Scientific* . . . ARNOLD LAHTI, KATHLEEN BRODAHL—Keen minds; alert; they make our future seem bright • *Attractive* . . . JUNE DANIELSON, MAX McLAIN—Always well-groomed; petite June; good-looking Max.



And now you will rest . . .

From the Contests of Time. Now that the players have gone, their footsteps still seem to resound through the empty halls. Footsteps of athletes, hurrying and quick . . . the thundering feet of the football line . . . the quick footsteps of basketball . . . the lithe, graceful footwork of tennis . . . the rapid paces of track . . . the leisurely tread of golf . . . the slow, determined footsteps of seniors . . . graduates ready for the Contests of Time.



Seniors



Planning social events, appointing committees, and attending interclub council meetings were only a few of the tasks of quiet, intelligent ARNOLD LAHTI, president of the junior-senior class. In addition to these duties, however, Arnold found time to participate actively in numerous intramural sports and other extra-curricular activities.



JESS BAILEY—Ferndale; WWCollegian Staff; Band; Norsemen.

WARREN BEECROFT—Bellingham; Co-editor, WWCollegian; Board of Control; Sports Editor, Klipsun.



CLARK BROWN—Ferndale; Editor, Klipsun; President, NIPCO, Who's Who, American Universities and Colleges.

DONALD BROWN—Bremerton; Vice-President, ASB; President, ICC; Who's Who, American Universities and Colleges.



MARY BURRITT—Bellingham; ACE; AWS.

NORMAN DAHL—Bow; Varsity Football; Varsity Basketball; Varsity Track.

Now . . .

With ARNOLD LAHTI as president, DEL PETERSON, vice-president, and BARBARA STOCKTON, secretary-treasurer, and DR. ALAN ROSS, as adviser, the junior-senior class finished another hectic postwar year with an air of accomplishment. For most of the seniors, and many of the juniors, graduation marks the end of their formal schooling. From commencement these new teachers will go to schools throughout the state to do their part in meeting the present crisis in education.



BLANCHE DEERING—Seattle; AWS.

GEORGIA DRIVER — Woodland; President, WRA; Board of Control; Who's Who, American Universities and Colleges.

PATRICIA ELLSPERMAN — Seattle; Transfer from U. of W.; AWS.

JOANN ELWELL — Rainier, Oregon; AWS; WRA.



VIVIEN FRANKLIN — Seattle; Transfer from U. of W.; "Dear Ruth"; AWS.

JAMES GILROY—Seattle; WWCollegian Staff; Intramural Basketball.

MARYANNE GOLLY—Bellingham; Colheconomist; Treasurer, Blue Triangle; WRA.

BYRON GRUBB—Bellingham; Vice-President, W Club; Varsity Football; Varsity Track.

MARGARET HIATT—Portland, Oregon; Recreation Committee; WRA; Schussken; IRC.

FRANK HOLBROOK—Bellingham; WWCollegian Staff; Band; Orchestra.

KENNETH JOHNSTON—Bellingham; Transfer from Northeastern U.; ACE; Norsemen.

MARGARET JOHNSTON—Bellingham; Business Manager, WWCollegian; Valkyrie; ACE.

WALTER HALL—Bellingham; Varsity Track; Norsemen.

ANNA HAMMAN—Kirkland; WRA; AWS.

DONELDA JOHNSON BARNHILL—Bellingham; Vice-President, AWS; Valkyrie; Who's Who, American Universities and Colleges.

ETHEL JOHNSON—Seattle; Transfer from St. Cloud Teachers' College; AWS.

MONTY JONES—Bellingham; Board of Control; Editor, WWCollegian; Co-chairman, Campus Day.

KENNETH KJORVESTAD—Bellingham; Transfer from Mayville College, N. D.; WWCollegian Staff; Norsemen.



Representative of this year's senior class are DONELDA BARNHILL and FRANK HOLBROOK. Typical seniors, they both took an active interest in scholastic as well as extra-curricular activities. Donelda served as AWS vice-president, and was a member of the Valkyrie. Frank was active in the ACE as well as the band and the orchestra.



ARNOLD LAHTI—Castle Rock; President, Junior-Senior Class; Vice-President, IRC; Who's Who, American Universities and Colleges.

JEANNE LANDERS—Shelton; President, Edens Hall; Queen Sigrid IX; Valkyrie.

JACK LaSHELL—Bellingham; Transfer from Colorado State College of Education; Norsemen.

DONALD LEU—Skykomish; Transfer from Northwestern University; W Club; Manager, Sehome Housing.

FAYE LINDBERG—Astoria, Oregon; Treasurer, ACE; Treasurer, AWS.

JEAN LIVERMORE—Woodland; Nonette; Choir; Band.

PATRICIA LOOMIS—Seattle; Transfer from U. of W.; Secretary, Board of Control; Vice-President, Blue Barnacles.

HAROLD LOOP—Bow; Chairman, Homecoming Dance; W Club; Varsity Tennis.

GERALD MERCER—Bellingham; Norsemen.

NORMAN NELSON—Sequim; Board of Control; Varsity Football; Who's Who, American Universities and Colleges.

AILEEN PRINCE—Bellingham; President, AWS; Choir; Who's Who, American Universities and Colleges.

JEANNE SIMONDS — Bellingham; Valkyrie; Commission, AWS; Cabinet, WRA.

ROBERT LUDWICK—Bellingham; Intramural Sports; Norsemen.

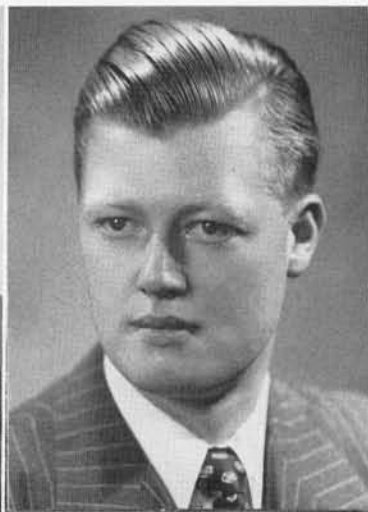
HELEN LYNCH—Seattle; ACE; Winter Dance Committee, Edens Hall.

DON PACKARD—Bellingham; President, ASB; President, W Club; Varsity Football.

DEL PETERSON—Bellingham; Vice-President, Junior-Senior Class; Varsity Football; W Club.

WALTER SINKO—Bellingham; Varsity Football; WINCO Champion Team; Norsemen.

RUSSELL SKIDMORE—Kirkland; Secretary-Treasurer, IRC; Publicity Movie Director; Camera Club.



Few couples on the campus are as well known as **KENNETH** and **MARGARET JOHNSTON**. Despite the difficult task of managing a home, the Johnstons have found time to take an active part in numerous activities. Kenneth is a member of ACE and Norsemen, and Margaret belongs to Valkyrie and ACE, and is former WWCollegian business manager. Their friendly ways, willingness to cooperate, and their pleasing personalities have inevitably won for them many friends.



MICKEY SMITH—Bellingham; Co-chairman, Opening Week; Board of Control; Who's Who, American Universities and Colleges.

ROSEMARY SMITH—Bellingham; Commission AWS; Valkyrie, Who's Who, American Universities and Colleges.

MILDRED STANGE—Plymouth, Wisconsin; Transfer from Concordia College; Klipsun Staff; AWS.

MARLES WIBERG—Everett; AWS.

WALLACE WILSON—Bellingham; President, Sophomore Class; "Blithe Spirit"; Secretary, Norsemen.

JAMES WRIGHT—Bellingham; ACE; Norsemen.



Pictured above are scenes from graduation day of 1946.

Diplomas in hand, the members of the graduating class of 1947 will leave the halls of Western Washington College, each to seek his own niche in the professional world. The majority of these graduates will become teachers. As they file out onto the campus that four years have made so familiar, they will recall those years . . . a time of intensive training, good times, and friendships made with members of the faculty as well as with fellow students. Those they leave behind will never forget the many varied and colorful personalities that made up the class of 'forty-seven.

What I Want in a Teacher

I expect a teacher to be friendly, but not too friendly. A teacher should act like an adult, not like one of the kids. A teacher should be stern, but not grim. The class should be held firmly in order, but not by punishing everyone who talks. Order should be kept by the teacher so that the students would rather listen to the teacher than talk and cause trouble . . . JERRY KING.



ABOVE: JERRY KING. PICTURED AT LEFT: JIM SANFORD and MARTHA MONAGHAN who were chosen by the pupils of Ferndale Junior High School as having the appearance of what they like in teachers. The junior and senior panel pictures, as taken by Yeager's Studio, were used as a basis for selection.



Last winter the pupils in a composition class at Ferndale Junior High School were asked to write their idea of the ideal teacher. Jerry King's paragraph, which is quoted above, was judged to be the best by Mr. Alvin Gregor, principal of Ferndale Junior High, and Miss Evelyn Odom, a teacher-training supervisor at WWCE. Here Jerry gives us an insight into the traits which children desire in their teachers. The qualities of his ideal teacher are also the qualities which the College training school aims to develop in its student teachers.

High above . . .

Western Washington College students are fortunate in having a winter sports mecca like Mount Baker at such close range. Only sixty-five miles away, Bakers' smooth white slopes are easily accessible for a week-end of enjoyment in this winter wonderland. Beautiful lodge, modern tows, and all the other facilities of popular ski spots are found here. The Ski Shop, in conjunction with the Co-op, and the mighty Schussken Club made trips easy going for the novice. Overnight trips to the lodge, and Saturday excursions highlighted an active winter season. From "sea level to ski level" in two hours is a reality for the students of WWC.

BELOW: Scenes at Mount Baker as seen through the camera of staff photographer Wayne Craig.





UPPER LEFT: Borek shooting a pass to Ross during the UBC game. UPPER LEFT: Clements and Erickson, playing against Seattle College, try for a rebound. CENTER: Song leaders Jean Travenshek and Beth Emery with cheer leader Gil Kugel. LOWER LEFT: Ryan jumps against Cheney. LOWER RIGHT: Erickson shooting in the Seattle College match.

On the Courts . . .

Jack Ross, winner of the basketball inspiration trophy and captain of this year's basketball team was the Vik mainstay on defense as well as their spearhead on attack. Captain Ross led the Viks against Pacific Lutheran for the first game of the Winko league. It was a slow start for Western, as the Gladiators coasted home 41 to 26. However, later in the season the Viks had the Gladiators on the run only to lose out in the final seconds 51 to 50. The Viking's second home game pit-



BACK ROW: *Bordon, Ross, and Ryan.* MIDDLE ROW: *Kink, Coach McDonald showing Clements and Wilson the finer points, and Polley.* BOTTOM ROW: *Borek, Black, Chenette, and Erickson.*

ted them against Central Washington's highly touted quintet—they were, too—CWC 66, WWC 34. The Wildcats even ran wilder in the second game, as they registered an 87 to 39 victory. After losing their first two Winko contests, Bill McDonald's boys hit the win trail for the first time, when they subdued Seattle College 55 to 50 in the hilltop gym. The Chieftains later gained revenge on their home court and squeezed by the Viks 46 to 41. The powerful Eastern Washington Savages drew bitter blood twice, when they defeated the Blue and White in Bellingham 62 to 34 and later in the season dumped them in Cheney 66 to 46.



BACK ROW: Green, Strom, D. Rosser and R. Anderson. CENTER: Rinehart, manager. FRONT ROW: L. Wilson, Clements, L. Gayda and Sloveck.

Whitworth invaded the land of the Vikings and came out on the short end of a 52 to 40 battle. The Pirates turned the table on Western the following week in Spokane to a tune of 60 to 47. Western regained its shooting eye to capture its third Winko win by coralling the Rangers of St. Martins 36 to 41. The Rangers evened the score later in the season in Lacey by edging out the Viks in a close one, 41 to 38. In pre-season games Western lost twice to the University of British Columbia, twice to the U. of W. Huskies, and once each to Alpine Dairy and Marine Recruiters.



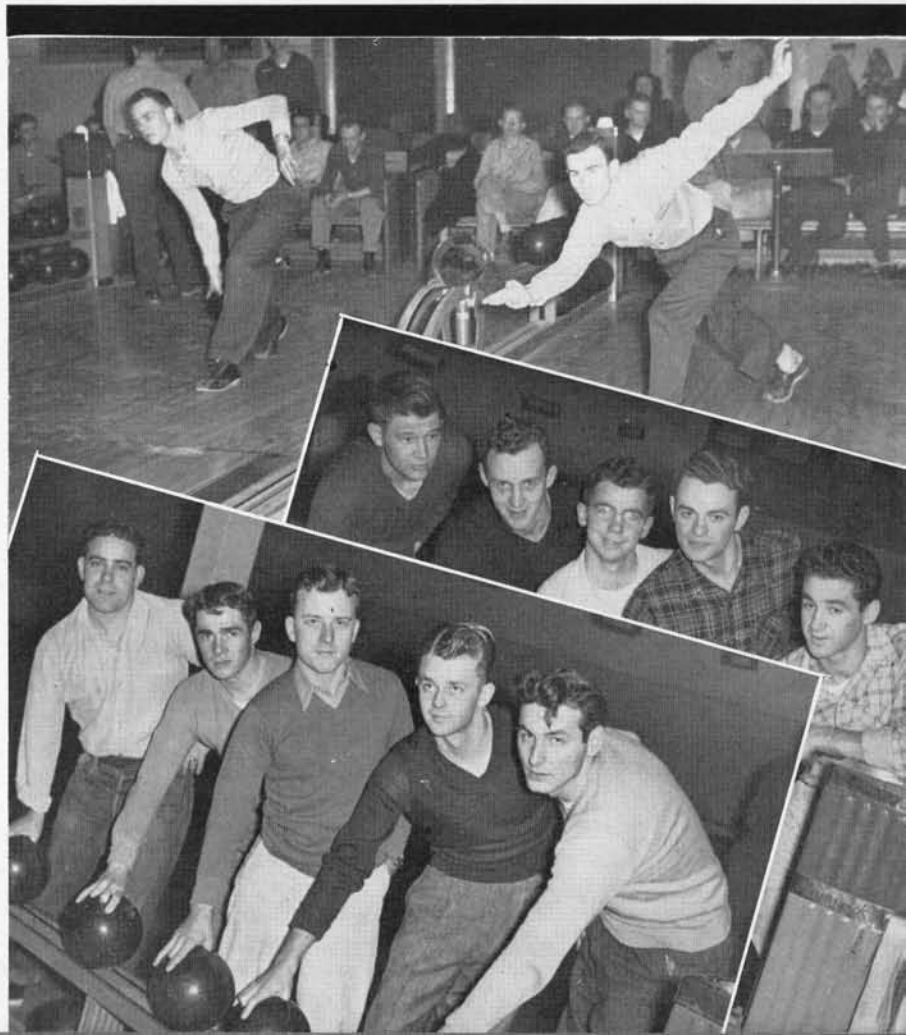
Just for Fun.. Intramural Sports

ABOVE: Outdoor types. BELOW—TOP: McIntosh and Parrish knock 'em over. CENTER: Daniels team . . . L. Wilson, Thompson, J. Winders, Terrey, and L. Winders. BOTTOM: Independents team . . . Loop, Morsman, Haggard, Jurgens, and Verrill.

The Alley Cats walked off with the kegging honors during fall quarter by chalking up 24 wins and allowing only 3 losses. It was during this quarter that the cellar dwelling Collegians got hot one night and set the season's team total of 867 pins.

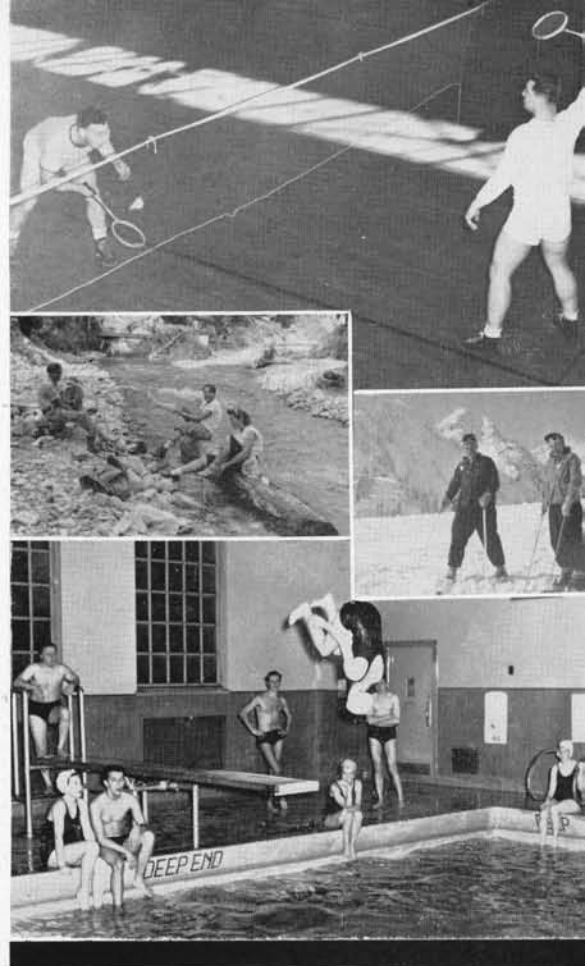
Winter quarter saw competition among the keglers tighten. Daniels, a newcomer to the league, slugged it out for top honors with the Independents. The league lead alternated between these two teams during most of the quarter. It was Daniels who emerged the winners of the winter quarter session with a record of 20 wins to 10 losses.

In the play-offs for the WWC Collegian bowling trophy, the Alley Cats, fall quarter champs, took three points from Daniels, winter quarter winners, to become top mural keglers of 1947.



Basketball, bowling, swimming, and badminton were the top sports on the intramural agenda during the past year. Under the able supervision of genial Sam Carver the mural program rang up the curtain fall quarter on two basketball leagues of nine teams each and one eight team bowling league. Two swim meets were held, one each during fall and winter quarters. Several badminton tournaments were held throughout the year.

RIGHT—TOP AND BOTTOM: Thursday night with mixed rec in the gym. CENTER: Mount Baker—wet and dry. BELOW: Top: Intramural grab. Center: Mudders team . . . top row: Vetter, Bianchini, Clayton and Fox. Bottom row: Poe, Karnofski, and Messinger. BOTTOM: Sweepers team . . . back row: Witt, Dahl, Leu, and Nelson. Front row: L. Smith, D. Peterson, Prigg, and Foster.



By defeating A league's champs, the Southenders, 34 to 27, the Mudders emerged winner of fall quarter's basketball league. The Mudders ran up an impressive list of 10 wins and 1 defeat during this quarter.

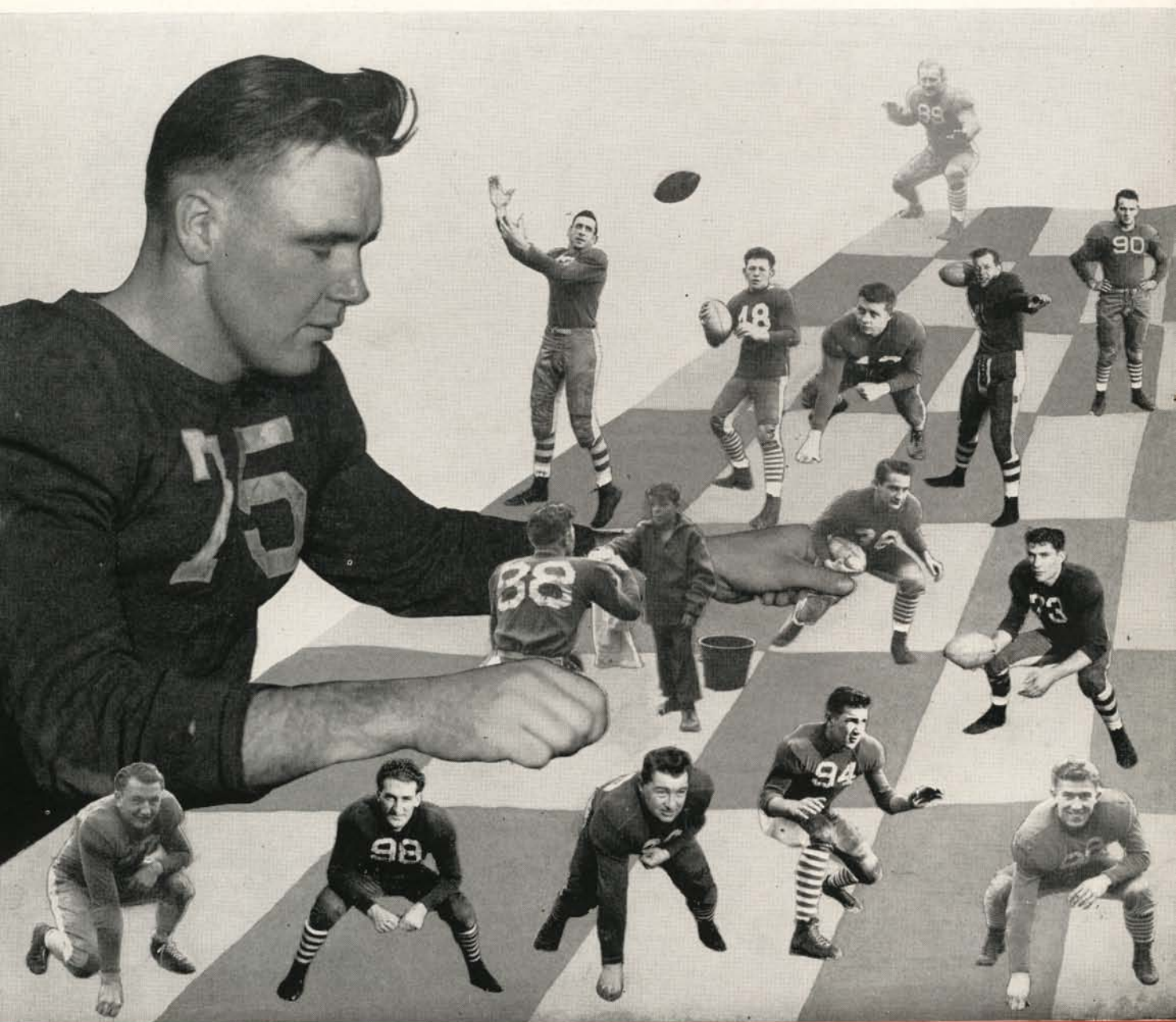
Fall quarter champs, Wayne Ensign's hard working Sweepers, also racked up an enviable record of 14 wins to 2 losses.

It was a rugged battle between the Mudders and the Sweepers during the play-offs for the intramural basketball crown and trophy. With a hard won victory apiece, the Mudders and the Sweepers entered the third and final game with all the chips on the table. As the dust cleared after the final whistle it was the hard working Sweepers who were the victors in a close checking, low scoring 19 to 17 win.

Captain Zurline's pawns checkmate . . .

After four years of waiting during the war, Coach Lappenbusch oiled up the Norse war machine once again. With plenty of experienced material back at the College, the training of the biggest and potentially best team in years got under way.

The season was off to a good start with a 7 to 6 Viking victory over CPS. Coming up from behind in the last quarter, Grubb kicked for the winning point. After an exchange of punts WWCE held on the 20 yard line. A lob pass from Gayda to Jewell in the last quarter saved the game.

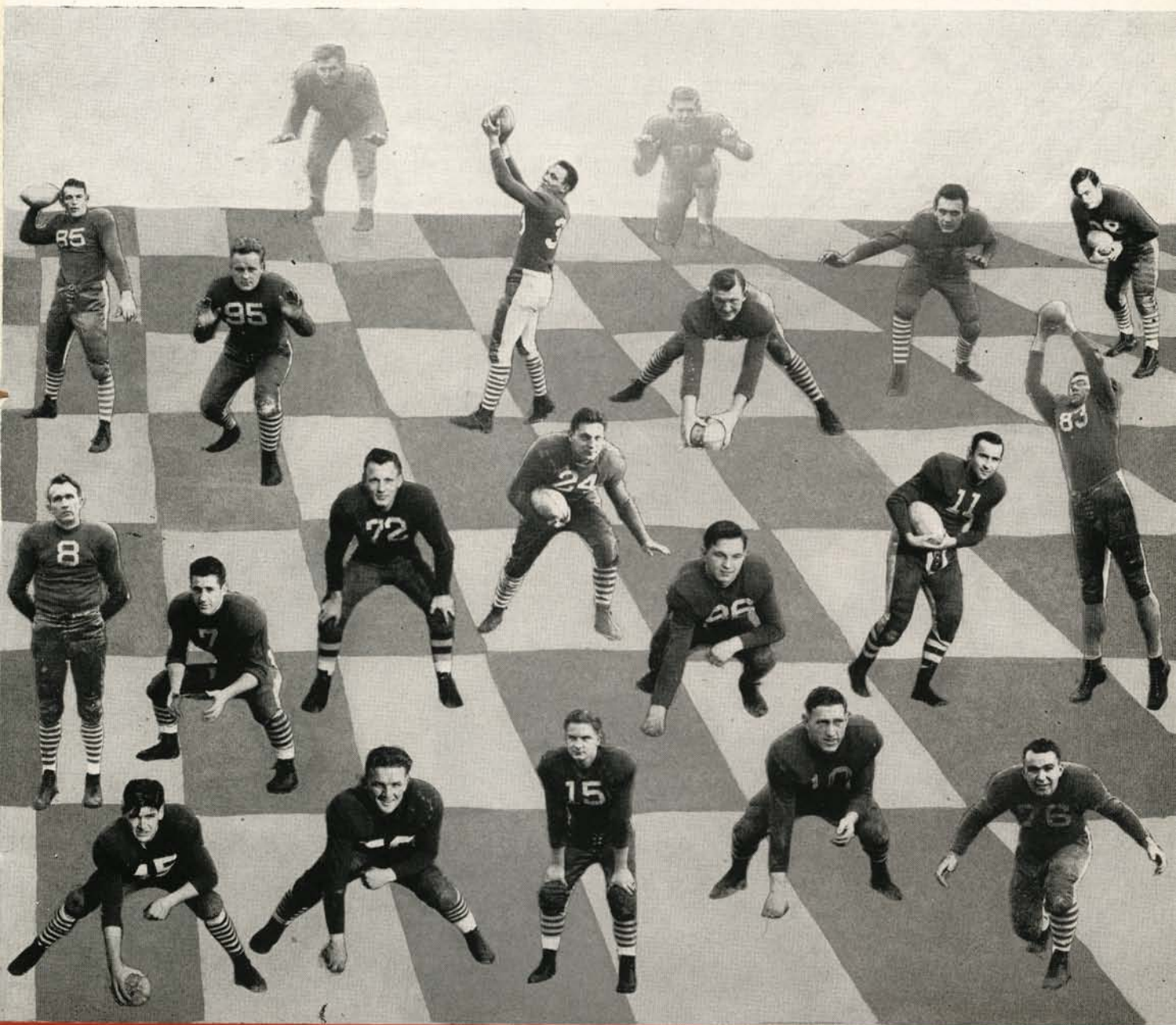


BACK ROW: *W. Hammer, Thornton, and Barnhill.*

THIRD ROW: *Dahl, Partlow, Weythman, Lindbloom, Jewell, W. Miller, Orrenmaa, Ness, Neigegemann, Reece, and Gardiner.*

The Viks chalked up another win when they journeyed to Vancouver, B. C., to take UBC into camp to the tune of 25 to 0. Gayda completed a 28 yard pass to Smith, Grubb's kick was good, Gayda completed a 33 yard pass to Jewell, and Winders put the ball over the goal from the 5 yard line.

It took CWCE to stop the Viking winning streak. In the first quarter CWCE led 13-0 before the Viks started to roll. A pass from Wade to Clayton was no good. In the second quarter Gayda completed a pass to Jewell. A kick by Grubb was good. In the third, a CWCE kick was blocked on the 1 yard line. Gayda made an on-the-line buck and a kick by Grubb was good. The score now was 31-30.



SECOND ROW: Hanowell, Wardrop, Gayda, Winders, L. Smith, Poe, D. Smith, Wade, and Clayton.

FRONT ROW: Weisenburger, Packard, Witt, Yonlick, Grubb, Rice, Dodge, Bryant, D. Peterson, and B. Brown.



In the fourth quarter, Smith was seen in a quarterback sneak, but a kick by our side was no good. The final score was CWCE-31, WWCE-26.

EWCE also handed the Norse a decisive trimming. Clayton intercepted a pass for the Viks in the first half but was hauled down. Two long passes, and a 15-yard off-tackle smash, scored for EWCE.

The Viks were on the losing column again when Lewiston won 26-6. On the opening kick-off the Viks started from their 20 yard line and in six plays had 6 points. They managed to push the ball to the 16 yard stripe three times but were unable to score. A pass from Winders to Smith was good, however.

BELOW—TOP LEFT: *And on the bench.* TOP RIGHT: *Lap and Nelson make plans.* CENTER: *Gayda goes for first and ten.* BOTTOM: *All over and we won!*

ABOVE—TOP: *The boys getting ready for the big tussle.* CENTER LEFT: *Sam Carver signals the end of game, end of season.* CENTER RIGHT: *There seems to be a question on the play.* BOTTOM: *And over for pay dirt.*

The Viks then lost to St. Martins 12 to 6.

A 13 to 0 victory over Whitworth favored the home team now. Grubb booted for an extra point. The air was full of passes this time. Out of 58 attempts, 20 were completed for both teams. Miller passed to Jewell for a score and there was a lateral to Lindbloom. Miller carried the ball 4 times.

The PLC homecoming game was the big victory of the season. Against a strong PLC team and with the odds in favor of the Lutes, the Viks won a smashing victory of 9 to 0.



ABOVE—WRA COMMISSION: *B. Smith, Anderson, Wilson, Swanson, Driver, Woodward, Sytsma, Louks, Thomas, Reeck, and Rosser.*

Barbelles . . .

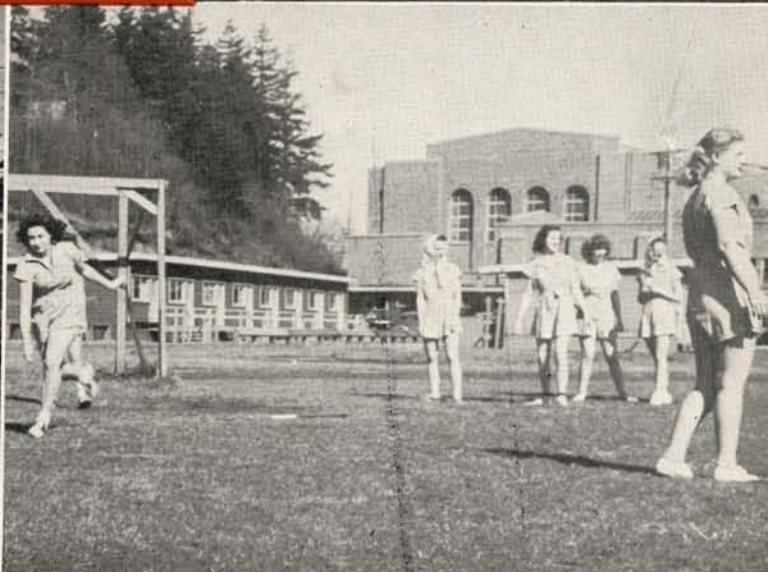
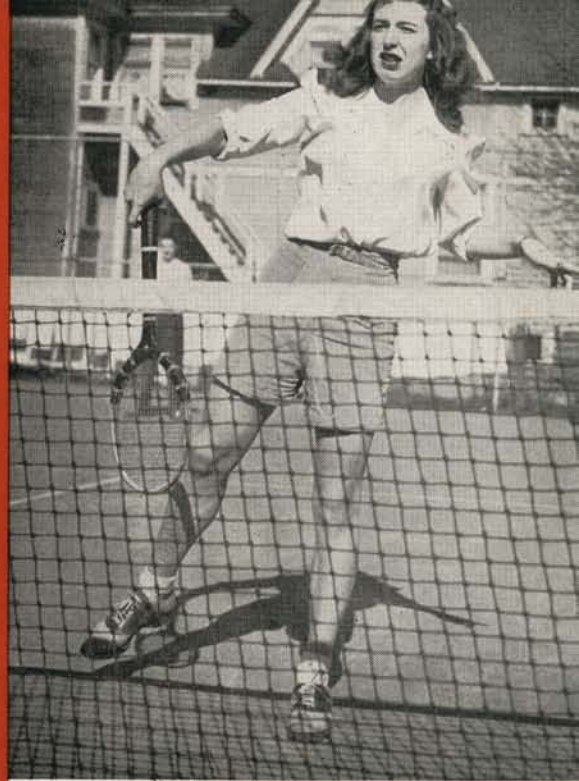
An every-busy campus organization, the WRA sponsored mixed rec every Thursday night for the entire student body. Tuesday and Thursday afternoons, the pool was open to swimmers. Horseback riding was offered the girls once a week. Fall and winter quarters the girls held bowling tournaments. Hockey, volleyball, and soccer turnouts were the big events fall quarter, while basketball held the spotlight winter quarter. Spring quarter fostered turnouts in softball, archery, tennis, and golf. To carry on the activities more efficiently, the organization fostered supplementary clubs—Blue Barnacles, the advanced swimmers club, the Dance club, the Softball club, the Badminton club, the Archery club, the Bowling club, and Riding club.

A sports party each quarter and trips to Viqueen lodge on Sinclair Island Fall and spring quarters were additional bits of diversion experienced by this active organization. An initiation tea was given fall and spring quarters and the highlight of winter quarter was the annual funfule WRA Carnival. Spring quarter topped a busy season with an eventful play day which included girls from the high schools of the county. WRA Commission includes all officers of the club, the presidents of the supplementary clubs, and the managers of the individual sports. With Georgia Driver as this year's president and Miss Margaret Aitken as the adviser, this body acted as coordinator of all WRA functions.



TOP LEFT: *Win, place and show.* TOP RIGHT: *the "Dead Eyes" ready to make it a bull's eye.* CENTER LEFT: *Fisher and Underwood play heads up ball.* LOWER LEFT: *Up an' over.*

UPPER RIGHT: *Blanche scores an ace.*
CENTER RIGHT: *Checking in.* LOWER
RIGHT: *Strike three.* LOWER LEFT:
Smith wields a wicked hockey stick.



They Run . . .



BACK ROW: Nason, Keehr, Jenft, DenAdel, F. Gayda, Borek, Huggins, Blauman, Miller, O'Conner, Breivik, and Grubb. MIDDLE ROW: Jamerson, Thompson, Bingham, Clayton, Thommasen, Yonlick, Cozza, Pomeroy, Leu, Dahl, and Erickson. FRONT ROW: Standish, N. Nelson, D. Taylor, Van Cleve, Walton, Bain, and Carrick.

Building a winning team from a group of untried men was not the easiest job in the world. Thus it is to the coach's credit that he was able to turn out such a smooth functioning one. For whether running, jumping, vaulting, or throwing, this year's track squad proved to be a speedy, versatile, well balanced one.

Coach McDonald used such veterans as Norm Dahl, Don Leu, Tuffy Nelson, and Connie Henderson as a core around which he built his first WWC track team.

The season opened with a thrilling triangular meet from which WWC emerged the victor over CWC and Whitworth. From then on the team proved to be the leading contender for the Winko crown.

The squads included, in addition to those listed above: Stuart Cozza, Paul Chenette, Bob Huggins, By Blauman, Larry Jamerson, Wally Miller, Joe Borek, Don Walton, Jim Jenft, Herb Van Cleve, Frank Gayda, Chuck Pomeroy, and Walt Clayton.

Hat's off to Big Bill for a successful first year with the WWC track squad.

These Hit...



BACK ROW: Rowand, Niles, Henderson, Price, McKelvey, Bianchini, Furlong, McCuilem, Partlow, McClelland, D. Burrell, J. Burrell, G. Smith, Pearson, and Mr. Charles Lappenbusch, coach. MIDDLE ROW: Poe, Rowland, Ross, Karnofski, Wardrop, Black, Reimer, Bainter, Myers, and Peter, manager. FRONT ROW: L. Gayda, Halpern, Pope, Winders, Nunamaker, Lindbloom, Bell, A. Turner, and Price.

For the first time in 12 years, baseball returned to the campus. Starting from scratch, Coach Lappenbusch built his squad about a nucleus of ex-service players.

After losing their first game of the season, the rawhide and hickory boys found their stride and vaulted into the league lead with victories over St. Martins, and heretofore undefeated Seattle College. As the season progressed, the team showed increased power in all departments, and thus promises well for next year when the coach will have a number of experienced lettermen upon which to build his squad.

Members of this year's baseball squad and the positions they played are: Jack Burrell, first base; Bob Nunamaker, second base; Les Winders, shortstop; Dick Burrell, third base; Hal Partlow, left field; Larry Gayda, center field; Loren Wardrop, right field; Jerry Karnofski, catcher; Ed Black and Hal Reimer, pitchers. Other members of the squad are: Mel Lindbloom, Jack Ross, Graham Bell, Wilbur Price, David Niles, Jack Henderson, Frank McClelland, Lou Pearson, and Tom Poe.



**CHENETTE
DIXON
D. FOSTER**

**M. SMITH
ROHLFING
J. SMITH**

**UNDERHILL
VERRILL
WILDER**

Trying to beat a Carver-coached golf team is like trying to beat Joe Louis. For thirteen consecutive years Coach Carver's WWC golfers have won the Winko championship, and they have always been THE team to beat. The '47 golf team was no exception, as they moved through the season mowing down their opponents with clocklike regularity.

This year's capable divot diggers were: Bill Wilder, Mike Smith, Dick Verrill, Gib Smith, and LeRoy Dixon.

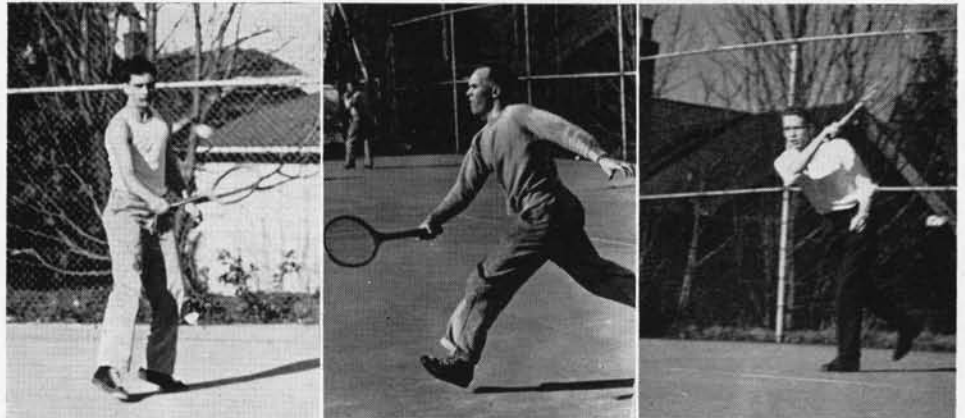
Showing mid-season form from the start, the team won their first four matches handily, and barring any unforeseen mishap, WWC should add the Winco championship cup to their already impressive array.

WWC's tennis courts were the scene of many a torrid match this spring, as another championship squad took game after game from their opponents.

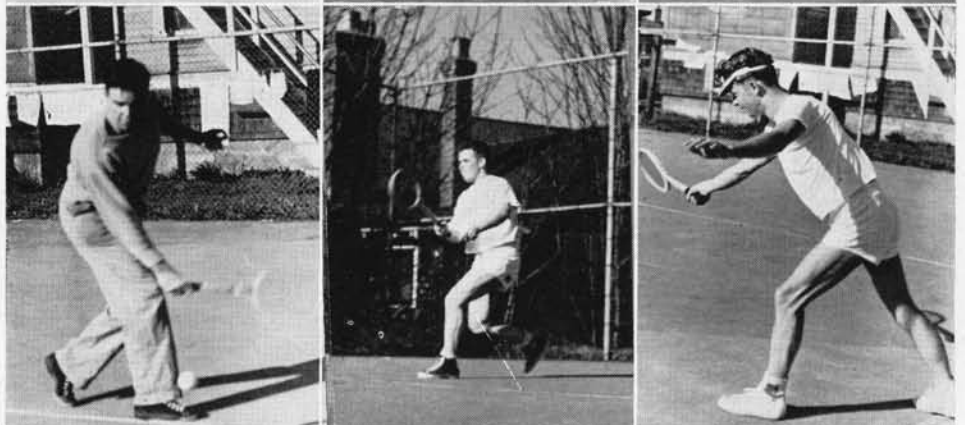
As with golf, tennis has always been a long suit at WWC. And coached by versatile Sam Carver, the teams have always been on or near the top of the Winko league. The speed, playing ability, and sportsmanship of the WWC teams is legend, and they are both an asset and a credit to the school.

Swinging rackets on the team this year were: Don Brown, Arnold Lahti, George Jurgens, Paul Foster, and Tommy Orphan, while the following capable reserves back them up: Dan Northcutt, Ray Borden, Sterling Brand, and George Burton.

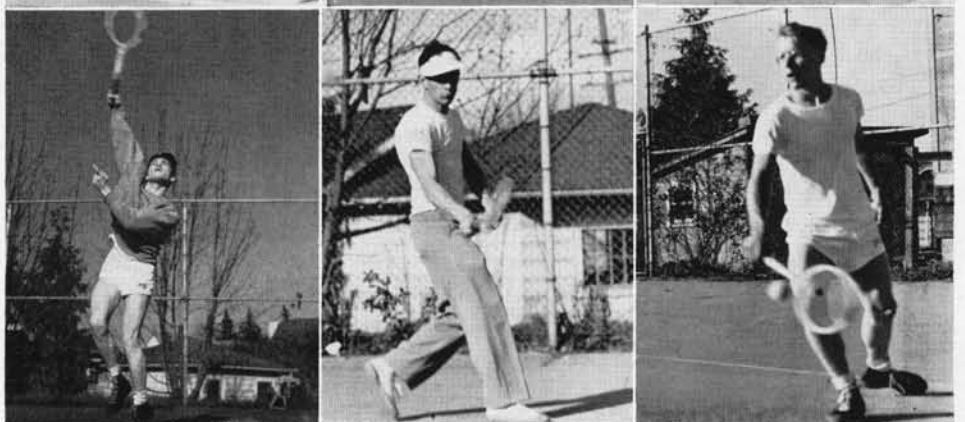
BORDEN
BRAND
D. BROWN



BURTON
P. FOSTER
JURGENS



LAHTI
NORTHCUTT
ORPHAN



Welcome Back!

it's
Homecoming



IN CIRCLE: *Queen Sigrid IX was throaty voiced, elegant Jeanne Landers. TOP RIGHT: Senior Hall lassies stomped their way into first place in the Homecoming assembly with "Hello ma, hello pa . . ." BOTTOM RIGHT: Down Holly street went cheerers for the team at the evening pep rally.*



Homecoming, always gay and colorful, really meant homecoming this year with the return from the services of many familiar figures to the campus.

Co-chairmen of the gala affair were Gloria Carey and Wade Haggard. They did a splendid job of planning an activity crowded week, which, in addition to the game included: revival of the freshmen bonfire, luncheons, dances, and skits.

Naturally the highlight of Homecoming, as always, was the thrilling football game with PLC; an inspired WWC team rose to the occasion, and downed their highly touted opponents 9-0.

Reigning over the traditional affair was beautiful Jeanne Landers as Queen Sigrid IX, and her four lovely princesses Georgia Driver, Bernice Chatterton, Phyllis Bondy, and Lee Thomas



ABOVE—TOP: Princesses Bondy, Driver, Chatterton, and Thomas surround Queen Landers in row number one at the Homecoming game. BOTTOM: Freshmen bonfire burns after several attempts. LEFT—UPPER LEFT: Co-chairmen Wade Haggard and Gloria Carey review past Homecoming plans. UPPER RIGHT: Queen Sigrid tells her subjects she'd "love to". CENTER: Crowds and a pile up. INSERT: Captain Zurline makes a completed pass on the fifty yard line. BOTTOM: The Lutes tried . . . but couldn't.

Topical Index

ADMINISTRATORS	14	KLIPSUN	51
ADMINISTRATOR'S AIDES	22	LIBRARY	21
ASSOCIATION FOR CHILDHOOD		MAINTENANCE	23
EDUCATION	67	MUSIC	33
ASSOCIATED WOMEN STUDENTS	68	NON-DIPLOMA STUDENTS	52
ATHLETICS	82	NORSEMEN	69
BASEBALL	95	OFFICE STAFFS	22
BASKETBALL	83	OPENING WEEK	40
BLUE TRIANGLE	70	ORGANIZATIONS	66
CAMPUS DAY	49	PRESIDENT	13
CAMPUS VIEWS	3	PUBLICATIONS	50
CLUBS	66	PUBLICATIONS PROM	64
COLHECONOMISTS	66	RADIO	41
COLLEGE CHRISTIAN FELLOWSHIP	66	SENIORS	74
CONTEST WINNERS	81	SCHUSSKEN	70
DIPLOMA STUDENTS	53	SKIING	82
DRAMA	38	SOPHOMORES	46
FACULTY	15	STUDENT GOVERNMENT	24
FOOTBALL	88	STUDENT LIFE	41
FOREWORD	6	SUMMER SCHOOL	63
FRESHMEN	29	TENNIS	87
GOLF	86	TOPICAL AND PERSONAL INDEX	100
GRADUATION	80	TRACK	94
HOMECOMING	98	TRUSTEES	12
HOUSES	36	VALKYRIE	67
INTERCLUB COUNCIL	70	VETERANS	54
INTERNATIONAL RELATIONS CLUB	66	W CLUB	67
INTRAMURAL SPORTS	96	WWCOLLEGIAN	50
JUNIORS	58	WINNING PERSONALITIES	71
		WOMEN'S RECREATIONAL ASSOCIATION	91

Personal Index

— A —			
Aagaard, Kasper	23	Bettman, May	15
Ackley, Dale	58	Bianchini, Albert	31, 86, 95
Adams, Alfred	32, 46, 71, 87	Bieckford, Doreen	33, 50
Adams, Gene	58, 71	Bieckford, Lyle	33
Aitken, Margaret	15, 92	Bingham, Donald	31, 94
Albert, Mary Lou	31, 33	Black, Edward	84, 95
Alexander, Verna Lee	31, 93	Blake, Edward	31
Amdal, Dean	31, 55	Blauman, Byron	31, 94
Anderson, Dolores	58, 91, 92, 93	Blake, Grace	22
Anderson, Don	31, 35	Blekkink, Zelma	33, 49, 58, 67, 68, 70
Anderson, Howard	29	Boede, Violet	12
Anderson, Lee	31	Bond, Elias	20, 63
Anderson, Miriam	28, 29, 32, 35, 64, 71	Bondy, Phyllis	8, 31, 40, 42, 70, 99
Anderson, Ron	85	Booman, Keith	31
Armstrong, Phyllis	31, 70	Booth, Mira	15
Arney, Nancy	31, 70	Borden, Charles	31, 64, 83, 84, 97
Arntzen, Edward	20, 49	Borek, Joseph	83, 84, 94
Attwood, Alice	48, 98	Bowden, Lee	31
Atwood, Lynn	33, 35	Bowsher, Robert	9, 42, 48, 71
Atwood, Mary	33, 93	Brand, George	48, 97
		Bramigin, Verne	12
— B —		Bratton, Jack	31
Bailey, Jess	62, 74	Breakey, Hazel	15, 66, 70
Bain, Roderick	94	Breivik, Howard	94
Bainter, Emery	95	Bremer, Neville	15
Baker, Carroll	48, 58	Britton, John	47
Baker, Gertrude	31, 70	Broad, Howard	31, 58
Baker, Gordon	31, 50	Brockmier, Laverne	25, 47, 69
Baker, Laura	31, 67	Brodahl, Kathleen	58, 71
Baker, Phyllis	98	Brodahl, Kenneth	31
Bannerman, Aveline	31, 98	Brokaw, Shirley	33, 64, 70
Barnes, Saralee	31, 33, 70	Bromley, Maridean	58
Barnhill, Donelda Johnson	67, 68, 76, 79	Brown, Clark	36, 51, 64, 74
Barnhill, Leonard	89, 90	Brown, Don	8, 24, 25, 67, 70, 74, 97
Barron, Declan	15	Brown, Edward	50
Bean, Wallace	32	Brown, J. Wendell	31, 36, 99
Beasley, James	31, 50	Brown, Owen	31
Beecroft, Warren	50, 51, 64, 74	Brown, William	67, 69, 70, 86, 89
Beeston, Glenn	31	Bryant, George	89, 90
Bell, Graham	70, 95	Buchanan, Doris	22
Benjamin, Keith	32, 33, 35	Buchanan, Garth	31
Bennett, Alastair	32	Buchanan, S. J.	22
Berg, Glenn	31, 33, 34, 35, 86	Bunn, Merle	29, 71
		Burger, August	29

B (CONTINUED)

Burgess, Glenn	38, 39, 47, 71
Burgess, Mary Ellen	31, 51, 93
Burnaby, Beverlee	31
Burnet, Ruth	15, 51
Burrell, Bonnie	31
Burrell, John	95
Burrell, Dick	50, 95
Burritt, Mary	74, 80
Burton, George	25, 47, 49, 71, 97
Bushong, Jacquelynn	31, 35, 70
Butler, Betty	47, 80

- C -

Call, Leslie	32
Call, Robert	32
Cameron, Beverly	58, 67, 70
Carey, Gloria	25, 46, 47, 64, 67, 68, 83, 99
Carey, Wesley	35
Carrick, William	94
Carver, S. E.	15, 90, 96, 97
Carey, Maurice	31, 33, 34, 35, 40, 98
Casanova, Katherine	16
Castle, Patricia	22, 36, 42, 58
Cecotti, Elsie	48
Cederstrom, Moyle	16
Channer, Edna	16, 67
Chatterton, Bernice	58, 67, 99
Chenette, Paul	31, 84, 94, 96
Chetwood, Irene	38
Christensen, Dolores	31, 40, 70
Christie, Bettyjane	31, 51, 64
Christopher, Lucy	58, 66
Church, Ethel	16
Clark, John	8, 35, 43, 46, 53
Clarkson, James	8, 32, 40, 98
Clayton, Walter	67, 86, 89, 90, 94
Clements, Robert	8, 28, 31, 83, 84, 85
Clogston, Fred	31
Cloud, Donald	32
Cochran, James	47
Cook, William	29
Cooper, Edwin	38
Cory, Francis	49, 70
Cotter, Edward	32, 43
Countryman, Linda	16, 66
Cozza, Barbara	35, 47, 51, 64, 67, 70, 80, 98
Cozza, Stewart	31, 94
Craig, Wayne	31, 35, 51
Crate, Lois	32
Crawford, Harry	42, 71
Crombie, James	32, 35
Crook, Ethel	33, 34, 59
Croy, LuWilla	31
Croy, Wallace	31
Cummins, Nora	16, 66, 70
Curtis, Gene	47, 50, 70

- D -

Dack, George	23
Dahl, Norman	53, 67, 74, 86, 88, 90, 94
D'Andrea, Frank	16, 34
Dangerfield, Edith	32, 64
Dangerfield, Doreen	32, 64, 69
Danielson, June	32, 37, 64, 65, 66, 71
Danzer, Arnold	35
Davis, Donald	31
Dawe, Ernest	32
DeBruler, Fred	31, 33, 34, 35, 43
Deering, Blanche	75, 93
DeHoog, William	31, 42, 71
DenAdel, Gordon	31, 94
Deneui, Marie	47
Dewar, Rose Mary	8, 31
DeYoung, Albert	33, 48
Dickson, Robert	50, 51, 53, 59, 71
Dillon, Geraldine	31, 70
Dixon, LeRoy	48, 96
Dodge, Ronald	67, 89, 90
Doherty, Marilyn	31, 41
Dorbolo, Ray	32
Driver, Georgia	25, 49, 67, 69, 70, 75, 91, 99
Driver, Jack	8, 25, 36, 46, 47, 69
Dunn, Mary	22
Duranceau, Jack	25, 59

- E -

Earle, Louis	22
Eggers, Donald	32
Eide, Marijune	9, 32, 42, 51, 64, 71
Ellington, Robert	31
Elliott, Irene	16
Ellsperman, Patty	75
Elwell, JoAnn	69, 75
Emerson, Phyllis	34
Emry, Elizabeth	31, 33, 64, 69, 83, 98
Engler, Anna	31
Englert, Lois	48
Englund, Elenore	32, 33, 93
Ensign, Wayne	23
Erickson, Jim	47, 87, 94
Erickson, Bob	46, 83, 84
Erickson, Carl	59, 99
Erickson, Margaret	47, 52

- F -

Fallis, John	48, 50, 55
Farver, Dale	32, 35
Fehlhaber, Jean	8, 31
Fenton, Clarena	38, 43, 59, 60, 67, 70
Feola, Norma	32
Fickel, Donald	31
Fields, Delmar	31, 34, 35
Fisher, Eileen	8, 30, 92
Fitch, Charles	9
Fjeran, Orin	32
Flick, Eugene	29
Follis, Robert	31, 39
Ford, Gordon	35, 48
Foster, Donald	8, 70, 96
Foster, Esther	31, 33, 40, 50
Foster, Glen	34, 35
Foster, Paul	49, 59, 86, 87, 97
Fox, John	86
Francis, Jack	66
Franklin, Vivien	43, 75
Frazier, Robert	59, 69, 70, 98
Freeberg, Albin	48, 51
Freeman, Kathryne	48, 71
Fullner, Jean	49, 59, 63
Funk, Beatrice	31, 33, 34, 50
Furlong, James	95

- G -

Galbraith, Vernon	31
Garbarena, Joanne	31, 33, 70
Garcia, Lenora	23
Gardiner, Earnest	89
Gary, Ted	25
Gayda, Frank	40, 43, 64, 67, 69, 89, 94
Gayda, Larry	28, 82, 83, 85, 95
Genther, Charles	8
German, Joseph	40, 48
German, Lauralee	32, 66, 70
Gilroy, James	75
Gnadt, William	43
Golly, Kathleen	22, 40, 46, 48, 51, 66, 71
Golly, Maryanne	66, 76
Gooding, Donald	55
Gooding, June	9, 35, 55
Goodwin, Beverly	31
Goos, Freda	32
Gragg, Georgia	16
Graham, Conrad	48
Graham, John	31
Graham, Jack	71, 83
Gray, Shirley	32, 43, 50, 70
Grebstad, Aileen	59, 67, 70
Green, Richard	31
Green, Thomas	8, 31, 52, 83, 85, 98
Gregor, Alton	32, 43
Griffin, Gloria	31
Griffith, Anna	31
Griffith, John	31
Groves, Donald	32, 35, 55
Gruuber, Byron	8, 76, 88, 94
Gruver, Dorothy	43, 48
Gunn, Burdette	36, 83
Guy, Jeannine	9, 31, 41, 42, 66

- H -

Haggard, Wade	25, 58, 59, 69, 87, 99
Haggard, William Wade	13, 49, 63, 64, 80
Hagblom, Shirley	32
Hall, Walter	76
Haller, Kenneth	9, 47, 86
Hallert, Albert	35, 47
Halpern, Gerald	28, 32, 51, 95
Hamman, Anna	76
Hammer, Donald	35
Hammer, Irwin	16, 49
Hammer, Willard	88, 90
Hammerud, Myrel	31
Hankins, George	35, 43
Hanlon, William	31
Hanowell, George	31, 88
Hansen, Earl	48
Hansen, Philip	32
Hanson, Beverly	32, 34, 70
Hardin, Marion	8, 31
Hardman, Harold	50
Hardwick, Donna	9, 32, 69
Harkoff, Victor	71
Harriman, Kenneth	55
Harris, John	32
Harrison, Shirley	29, 31, 40
Haskell, Donna	21
Haugen, Robert	3, 51, 59
Hawk, Raymond	14
Hawley, Bruce	9, 32, 40
Hayes, William	39
Hays, Charles	47
Hays, James	31
Hayward, John	64, 71
Henderson, Connie	95
Henderson, Stuart	95
Hearsey, Beth	20

H (CONTINUED)

Hearsey, Herbert	21
Herrick, Mildred	21, 67
Hess, Gerald	32
Hess, Meredith	32, 33, 34
Hiatt, Margaret	41, 76, 92
Hicks, Arthur	17, 80
Hillyard, Gloria	32, 43, 70, 86
Hinthorne, Jeanne	31, 98
Hoag, Doris	47, 68, 70
Hoard, James	21, 99
Holbrook, Frank	67, 76, 79
Holcomb, Laurence	31
Holk, Erwin	31
Holland, Mark	31
Holtzheimer, Theodore	31
Hood, Robin	32, 42, 70
Hooper, Gladys	67
Hoover, Donald	47
Hoppe, Victor	17, 39
Hopper, Elizabeth	17
House, Madelyn	28, 31, 35, 40
Hubbard, Roger	48
Huckins, Colleen	29, 43, 66, 71
Huggins, Robert	48, 94
Hughes, Victor	30
Huling, Donna	29, 32
Hume, Patricia	32, 35, 70
Hunt, Barbara	47
Hunt, Leslie	20
Hunt, Thomas	17
Hunt, William	60
Hurd, Henry	17
Huster, Esther	31, 70

- I -

Inge, Marian	42, 70, 71
Ingersoll, Robert	35, 47, 66
Iraola, Frank	67, 69
Jackson, Alice	48
Jackson, William	47, 55
Jacoby, Janice	60
Jamerson, Lawrence	31, 94
James, Bessie	31, 33
Jenft, James	35, 48, 67, 90, 94
Jensen, Mary Ellen	31, 33, 47
Jewell, Robert	88, 90
Joachim, Richard	31
Johansen, David	31
Johnson, Carl	48
Johnson, Clifton	48, 66, 86
Johnson, Ethel	76, 80
Johnson, Evelyn	31, 43
Johnson, Gertrude	32, 33
Johnson, Vivian	20
Johnston, Edgar	47, 64, 71, 99
Johnston Leola Hyatt	25, 32, 37, 50, 59, 60, 64, 66, 70, 71, 82, 98
Johnston, Margaret	67, 70, 76, 77
Johnston, Stewart	17
Johnston, Kenneth	76, 77
Johnstone, Howard	32
Joly, David	31
Jones, Donald	42, 50, 55
Jones, Monty	50, 64, 76
Jurgens, George	37, 49, 60, 87, 97

- K -

Kahns, Milt	29
Kanarr, John	8, 32
Kangley, Lucy	17
Karnofski, Jerome	86, 95
Kehr, Wallace	31, 47, 90, 94
Kellner, Margaret	31
Kelso, Hellen	47, 67, 68, 70
Keown, Charles	67, 87
Keplinger, Earl Mason	8, 29
Keppler, David	48
Keyes, Clifford	31
Kibbe, Lynus	20
King, Lois	8, 28, 43, 48, 64, 98
Kingsley, Marjorie	22, 40, 64
Kink, Mitchell	83, 84
Kinsman, Priscilla	17
Kirkpatrick, Florence	17
Kjorvestad, Kenny	76
Knapman, Fred	17
Knight, Leslie	42
Knowles, Joanne	29, 31, 36
Knuppenburg, Jack	60
Knutson, James	31
Knutzen, Maurice	29
Kuder, Merle	14, 46, 80
Kugel, Gilbert	8, 83

- L -

Laakso, Jeanine	30
LaGesse, Paulette	32, 35
Lahti, Arnold	25, 66, 67, 70, 71, 74, 77, 97
LaLone, Hilda	67
Landers, Jeanne	37, 53, 67, 68, 77, 98, 99
Lang, Harriet	30, 35, 70
Lapp, Frank	37, 40, 46
Lappenbusch, Charles	18, 90, 95

Larsen, Patricia	30, 32
Larson, Howard	48
Larson, Richard	29
LaShell, Jack	77
Lawson, John	30
Leaf, Elmer	18
Lee, Gilbert	9
Leedy, Dorothy	22
Lehmann, Melba	30, 35, 98
Leque Neil	32
Leu, Donald	67, 77, 86, 94
Lewis, Duane	29, 33
Likkel, Lowell	29
Lillibridge, Leonard	29, 40, 50
Lillis, Robert	70, 82
Lind, Jack	29
Lindberg, Faye	67, 68, 77
Lindbloom, Melvin	28, 29, 36, 55, 67, 88, 95, 99
Lindell, Carl	25, 36, 38, 39, 40, 41, 71
Lindstrom, Shirley	29, 70, 86
Livermore, Jean	33, 34, 35, 77
Livermore, Lionel	33, 48
Livernash, Lloyd	30
Long, Shirley	48, 70
Longan, Joseph	47, 69
Loomis, Patricia	25, 30, 40, 43, 66, 67, 70, 78
Loop, Harold	67, 69, 78, 87
Loucks, Betty	30, 91, 92, 98
Loudon, Murial	29, 33
Ludwick, Robert	53, 78, 86
Lundeen, Pauline	47
Lurie, Richard	30
Lustermann, Paul	18
Lutro, Margaret	47, 67, 70, 71
Lynch, Helen Fellows	78

- M -

MacDermott, Harold	83
MacDonald, Inadeen	30
MacKinon, Margaret	22
Madden, Alma	18, 41
Maloney, James	30
Manning, Nancy	30, 33, 70
Mansholt, Heiko	32
Mapes, James	36
Maricle, Jim	47
Marmon, Elva	8, 29
Martin, Donna	29, 92
Martin, Genevieve	28, 32, 66
Martin, Kenneth	48
Martin, Robert	32
Martinsen, Wesley	30, 35, 70
Massey, Donald	29
Masterson, Loris	32, 33, 70
Mather, Russell	29, 50
Mathews, Vern	50, 64, 71
Mattson, Raymond	30
Mau, Jean	30
McArthur, Ava	30, 50
McBain, James	30
McCarty, Dale	29
McClelland, Frank	95
McCormick, Ruby	32, 37
McCullem, Clifford	29, 95
McDonald, Clyde	14, 69, 84, 94
McEvoy, Patrick	29
McGillivray, Dennis	29
McInnes, Barbara	32, 33, 70
McIntosh, Bernard	30, 87
McKelvey, Alice	60, 67
McKelvey, Troy	95
McKelvey, Jean	60, 67, 70
McLachlan, Calvin	31, 35
McLain, Max	33, 39, 71
McLane, Dorothy	32, 66, 70
McLane, Joan	30, 66, 98
McLeod, Betty	8, 22, 29, 51, 64, 70
McLeod, June	18
McLeod, Ronald	29
McRae, Charles	29
Mead, May	22, 66
Medema, Clarence	3, 40, 47
Meiers, Clayton	48
Meiers, Otto	29
Mercer, Gerald	49, 78
Merrick, Nancy	30, 40, 51, 69, 70
Merriman, Pearl	18
Meyer, William	95
Miller, Clarence	48
Miller, Irving	20
Miller, Robert	30
Miller, Wallace	28, 89, 94
Miller, William	32
Mitchell, John	32
Mjoen, Esther	32
Moblo, Robert	34, 35, 41, 43, 60, 80, 99
Molder, Cecil	23
Molleston, Gene	29, 30
Monaghan, Martha	60, 81
Monson, George	29
Montgomery, Dorris	30, 37, 51

M (CONTINUED)

Morrison, Walter	32
Morse, Francis	30, 35
Morsman, Richard	87
Morton, William	33, 48
Muffy, Marjorie	18, 70
Mula, Richard	50
Mulford, Elizabeth	29
Muncaster, Phyllis	93
Murphy, Doreene	60
Murray, Keith	18, 28
Myre, Donald	30, 43

- N -

Nason, Albert	30, 94
Nelson, Edward	32
Nelson, Norman	53, 78, 86, 90, 94
Nelson, Roy	60, 61
Ness, Clarence	29, 89
Nicol, Synva	18
Niegemann, Robert	8, 29, 89
Niles, David	29, 95
Nims, Bobbie	30
Nims, Jack	29, 33, 34, 35, 71
Nordberg, Odell	30, 49
Nordby, Lawrence	32, 33, 43
Norman, Ruth	30, 51, 70
Northcutt, Daniel	97
Nunamaker, Kenneth	32
Nunamaker, Peggy	30, 35, 52, 68
Nunamaker, Robert	83, 95

- O -

O'Brien, James	18
O'Conner, Ken	94
Odom, Evelyn	19, 81
O'Halloran, Jeannine	32
Olsen, Richard	32, 40
Oman, Mary Ann	30
Orphan, Tommy	30, 35, 70, 97
Orenmaa, Allan	30, 89
Oswalt, Clarence	30, 40
Owen, Suda Jean	38, 39, 60, 71
Owens, John	42, 71

- P -

Packard, Don	24, 25, 67, 88
Pagels, Guerd	32
Paradis, Arnold	30
Parrish, Claude	87
Partlow, Harold	47, 88, 95, 98
Paton, Jean	30, 40, 66
Patten, Ronald	30
Pearson, Carl	95
Peaster, Betty	9, 49, 61
Peck, Eleanor	30, 70
Peck, Miriam	19
Pedersen, Ronald	30
Pemberton, Joseph	12
Penn, June	28, 32, 36, 43, 50, 98
Pequette, Marie	48, 71
Peter, Vernon	32, 35, 95
Peters, John	30, 70
Peterson, Bernard	43, 47
Peterson, Del	67, 71, 75, 78, 86, 89, 90
Peterson, John	32, 33
Peterson, Roland	32, 33
Petrie, Stewart	30
Pierce, Colleen	47
Pill, Jim	28, 64, 99
Pilon, Melvin	40, 47
Platt, Ruth	19
Plympton, Hazel	19, 70
Poe, Thomas	55, 67, 83, 86, 89, 90, 95
Polley, Ray	84
Pomeroy, Betty	52
Pomeroy, Charles	33, 47, 64, 82, 94
Pope, John	95
Porsch, Betty	30
Porter, Amaryllis	30, 33, 34, 35, 66
Powers, Lorraine	14, 22, 68, 70
Price, Harold	37
Price, John	95
Prigg, Larry	30, 35, 43, 86
Prince, Aileen	78
Proctor, Mary	30
Provost, Rosemary	30
Pullar, June	30, 33

- Q-R -

Quam, David	30, 70
Quinlan, Joyce	29, 66, 70
Radcliffe, William	34
Rairdon, Don	66
Rairdon, William	66
Ramaley, Harold	30
Ramerman, Harold	29
Rank, Elizabeth	30, 34, 35, 93
Rank, Martha	34, 39, 48
Redmond, Donna	8, 25, 35, 46, 47, 67, 68, 76
Reece, Charlene	32
Reece, William	89

Reeck, Charlotte	30, 70, 91, 93
Reeck, Merlin	70
Reese, Pearl	21
Reiman, Lucille	19, 66
Reimer, Harold	32, 55, 95
Regier, Alice	20
Regier, Bernard	19, 33
Reigers, Raymond	61
Reimer, Hannah	39
Reimers, Kenneth	32, 95
Reinhart, Charles	61, 85
Renfro, William	30
Renshaw, Morton	19, 70
Rice, Carelton	8, 30, 55, 89
Rice, Charles	20
Richards, Roland	40, 48, 51, 52
Richardson, Charlotte	19
Richardson, Paul	30
Ritchie, Barbara	29
Rixon, Carol	30
Robbins, Alice	29, 30
Robbins, Eugene	29, 34, 35
Roberson, Frank	32
Roberts, George	29
Rockey, Babette	30
Rodenberger, Robert	30
Rogers, Charles	40, 48
Rohlfing, Donald	32, 96
Roser, Pauline	29
Ross, J. Alan	19, 49, 75
Ross, Jack	46, 47, 52, 67, 83, 84, 95
Rosser, Betty	49, 50, 59, 61, 64, 67, 70, 91
Rosser, Daniel	29, 51, 85
Rothlisberg, Beverly	30
Rowand, LeRoy	30, 95
Rowland, Morris	95
Ruggles, Annette	30, 34, 92
Runestrand, Arthur	8, 28, 29, 33
Rushong, Howard	19
Ryan, Dorothy	48
Ryan, Hugh	43, 83, 84

- S -

Sams, Ernest	33, 35, 48
Sanford, James	25, 50, 59, 61, 67, 80, 81
Sanstead, Gordon	29
Sanstad, Margaret	29, 66
Sarvis, Betty	55
Sarvis, Robert	55, 82
Schaffert, Sophia	29, 98
Scheib, Joe	52, 66, 70
Schenk, Irene	30
Schouweiler, Mary	29
Schuske, Clarence	20
Schuske, Georgellen	20
Sease, Richard	30, 35, 69
Seelye, Jean	32, 67, 70
Shannon, GERALYN	29, 66
Shannon, Pat	61, 67, 70
Sharp, Howard	29, 98
Shellebarger, John	28, 30, 39
Shepherd, Jean	20
Shetler, Gayle	30
Shultz, Nellie	30
Siegrist, Janet	30, 50
Simonds, Jeanne	78
Simonds, Ralph	20, 70
Simpson, June	29, 30, 43
Sinko, Walter	78
Skeen, Bearnice	20
Skidmore, Russel	8, 49, 66, 78
Sleem, Edward	47
Sly, Marilyn	30
Smart, Jane	61
Smith, David	30, 89
Smith, Dorothy	30, 33, 35
Smith, Gordon	29, 30, 95
Smith, John	96
Smith, Kathleen	48, 70
Smith, Kaye	30
Smith, Lester	29
Smith, Les	60, 61, 69, 83, 86, 89, 90
Smith, Berdell	48, 50, 67, 91
Smith, Bernice	30, 93
Smith, Mickey	8, 25, 40, 79
Smith, Mike	38, 61, 96
Smith, Nancy	22
Smith, Rosemary	3, 5, 8, 40, 49, 79
Smith, Theresa	29
Smithey, Walter	29
Snow, Miriam	21
Soderstrom, Ruth	32, 33, 34, 67, 70
Sooter, Wilburn	29
Sorenson, Gordon	32
Sorenson, Heine	30, 55
Spencer, Ralph	42, 71
Sperry, George	23
Spidsboel, Barbara	49, 61, 66, 92, 98
Stamatis, Shirley	30
Standish, Miles	11, 27, 30, 45, 57, 73, 94
Stange, Mildred	51, 79

S (CONTINUED)

Steele, Vivian	29
Stephan, Calvin	32
Still, Roma	30
Stillman, Ivaloe	67
Stiltner, Donna	49
Stockton, Barbara	33, 34, 41, 61, 67, 75
Stoddard, Philip	61
Stradley, Willard	30
Strange, Edith	20
Strom, Martin	85
Strong, Harold	30
Strotz, Margaret	48, 66, 67, 68, 70, 71, 91
Stuart, Brett	52
Sundeen, Janet	30, 70
Sundquist, Leona	20, 49
Sundstrom, Elwood	32
Sutherland, Harry	30
Swan, Norma	8, 30, 34, 70
Swanson, Arlene	33, 46, 48, 66, 67, 68, 70, 91
Swanson, Earl	32
Swenston, Madeline	32
Sweeney, Bob	32
Sytsma, Cynthia	61, 91, 92

— T —

Tawes, Lois	30
Taylor, Barbara	30, 66, 70
Taylor, Charlott	30
Taylor, Donald	8, 29, 94
teHennepe, Shirley	62
Teichroew, Mary Ann	33, 34, 35, 47, 67, 70, 71
Terrey, John	36, 87
Thad, Sidney	32
Theg, Ann	32, 43, 66, 70
Thomas, Lee	25, 46, 67, 68, 91, 99
Thommasen, John	62, 67, 94
Thompson, Douglas	62, 67, 94
Thompson, Harvey	30, 36, 55, 87
Thompson, Pat Frombly	59, 61, 63
Thompson, Stanton	30, 52, 70
Thon, Allan	62
Thornton, Hervey	62, 67, 70, 89, 90
Threlkeld, Phyllis	28, 33, 39
Tiffany, Warren	29, 33, 39
Traulsen, Margery	92
Travenshek, Jean	8, 39, 62, 70, 83, 87
Tremain, Mildred	22
Trivett, Earl	30
Trotto, John	32
Tulin, William	36
Turek, Edward	30
Turner, Arnold	29, 36, 51, 70
Turner, Arthur	30, 95
Tyler, Joane	30, 43, 50

— U —

Ullin, Anna	20, 83
Ullin, Chester	63
Umphrey, Wesley	30
Underhill, Robert	32, 96
Underhill, Zoe	8, 30, 35, 92
Urfer, Cora	37, 62

— V —

Van Aver, Albert	20
Van Cleve, Herbert	42, 94
Vandenburg, Ruth	32
Van de Riet, Harry	32
Van de Wetering, Lee	30, 42

Van Eaton, Elizabeth	33, 42, 48, 70, 71
Van Moorhem, Shirley	30
Van Zandt, Pat Temperly	25, 33, 35, 37, 46, 47, 67, 70
Vaux, Patricia	32, 35
Verrill, Richard	42, 62, 86, 96
Vetter, Hugh	41, 86
Vrieling, John	32

— W —

Wade, LeRoy	89
Walker, Berniece	42, 48, 71
Wallace, Sharon	29, 64, 70, 92
Walsler, Herbert	29
Walter, Sarah Jane	29
Walton, Don	94
Wardrop, Loren	88, 95
Waterhouse, Stellarae	30, 43, 70, 92
Waterman, Pat	30, 42, 86, 87, 92
Watson, Corinne	93
Wayland, Julian	29, 55
Wefer, Winton	29, 35
Weidkamp, Kenneth	32
Weirauch, Fred	33
Weisenburger, Edward	88, 90
Welsh, Robert	32
Wendling, Elsie	20
Wenger, Rex	29
Weythman, Lewis	30, 88
Weythman, Ruth	20
White, June	50, 51, 62, 63, 67
Wiberg, Marles	33, 79
Wiik, Nan	20
Wilbanks, Eleanor	32, 36, 98
Wilder, Ruth	34, 58, 62, 67
Wilder, William	25, 62, 67, 96
Williams, Dwight	29, 42, 86
Williams, Lloyd	30, 35
Wilson, Leslie	30, 84, 85, 87
Wilson, Mabel Zoe	20
Wilson, Nancy	91
Wilson, Wallace	52, 79
Winders, Jesse	30, 33, 87
Winders, Leslie	36, 46, 67, 70, 87, 89, 95
Winnem, Gloria	29
Winslow, Harold	32
Witt, Herbert	67, 70, 86, 88, 90
Wittler, Muriel	47, 48, 51, 66
Wolf, Glen	32, 39
Wolstenholme, Ray	62
Wood, Eunice	33, 40, 62, 66
Wood, Phyllis	32, 37, 41, 50, 70, 71
Wood, Ralph	30
Woodard, Lane	30
Woodring, Paul	20
Woodward, Geraldine	9, 22, 37, 62, 67, 70, 91
Woodward, Gloria	29, 50
Worthylake, Mary	20
Wright, James	79
Wright, Richard	30, 86
Wulff, Evelyn	29

— X-Y-Z —

Xitco, John	9
Yonlick, George	8, 30, 88, 94
Yost, Mollie	32
Young, Dorothy	29, 43, 66, 67, 70
Zamzow, Charles	29
Zanassi, Virginia	48, 66, 70
Zuck, Lawrence	30, 35, 43
Zurline, Frank	8, 9, 88, 90, 99



Student photographers for the 1947 Klipsun were: Bob Haugen on pages 4-9, 12, 49, 63, 68, 80, 87, 88, 90, 92, 93, 98, 99, and end sheets; Ruth Norman on 71; Roland Richards on pages 40, 64, 80, 88, 90 and 94-99; and Wayne Craig on 8, 9, 21, 23, 28, 35, 39, 40, 42, 43, 46, 52-55, 63, 64, 82-87, 90, 92, 93 and 96-99.

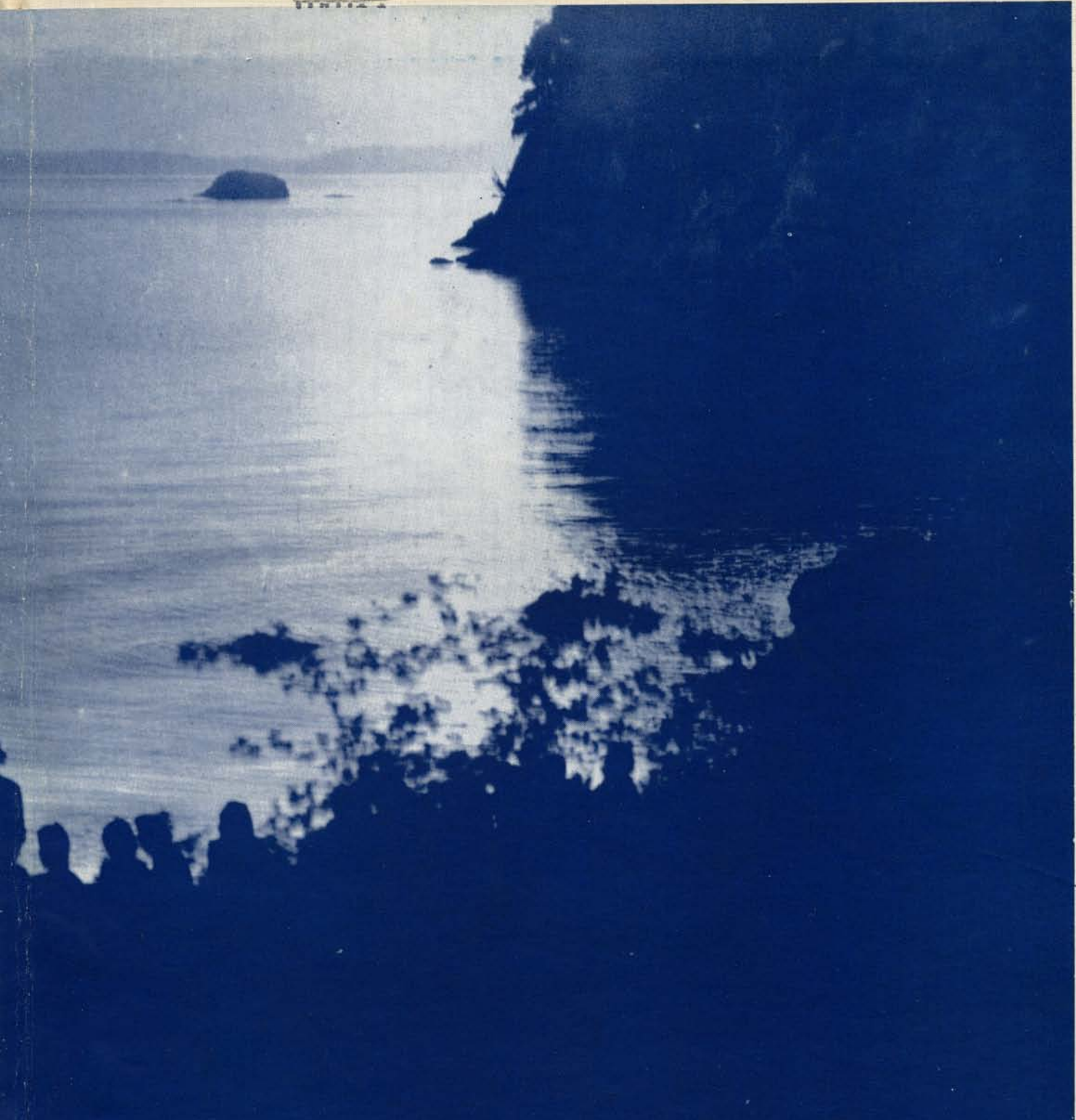
For their excellence in cooperation and workmanship, I call your attention to the photography of Frank Yeager and Stuart Hertz; engravings from Artcraft Engraving Company; and printing by Cox Brothers, Printers.

Mrs. Ruth Burnet, publication's ingenious adviser; Betty McLeod, the Rosemary Bolster award winner; Wayne Craig, first winner of the Klipsun photography plaque; and the royalists on the Klipsun staff who stayed on to see the job done, despite temperamental editorial outbursts . . . thank you, and yes . . . my patient teaching supervisors—bless 'em—Miss Channer, Miss Odom, and Mrs. Kempfhaus, for allowing me time for still another kind of learning experience; and the many friends-in-deed, who have helped in so many ways . . . all of you . . . my deepest appreciation.

CLARK BROWN, *Editor*.



Far above the



ay's

blue

water.....

