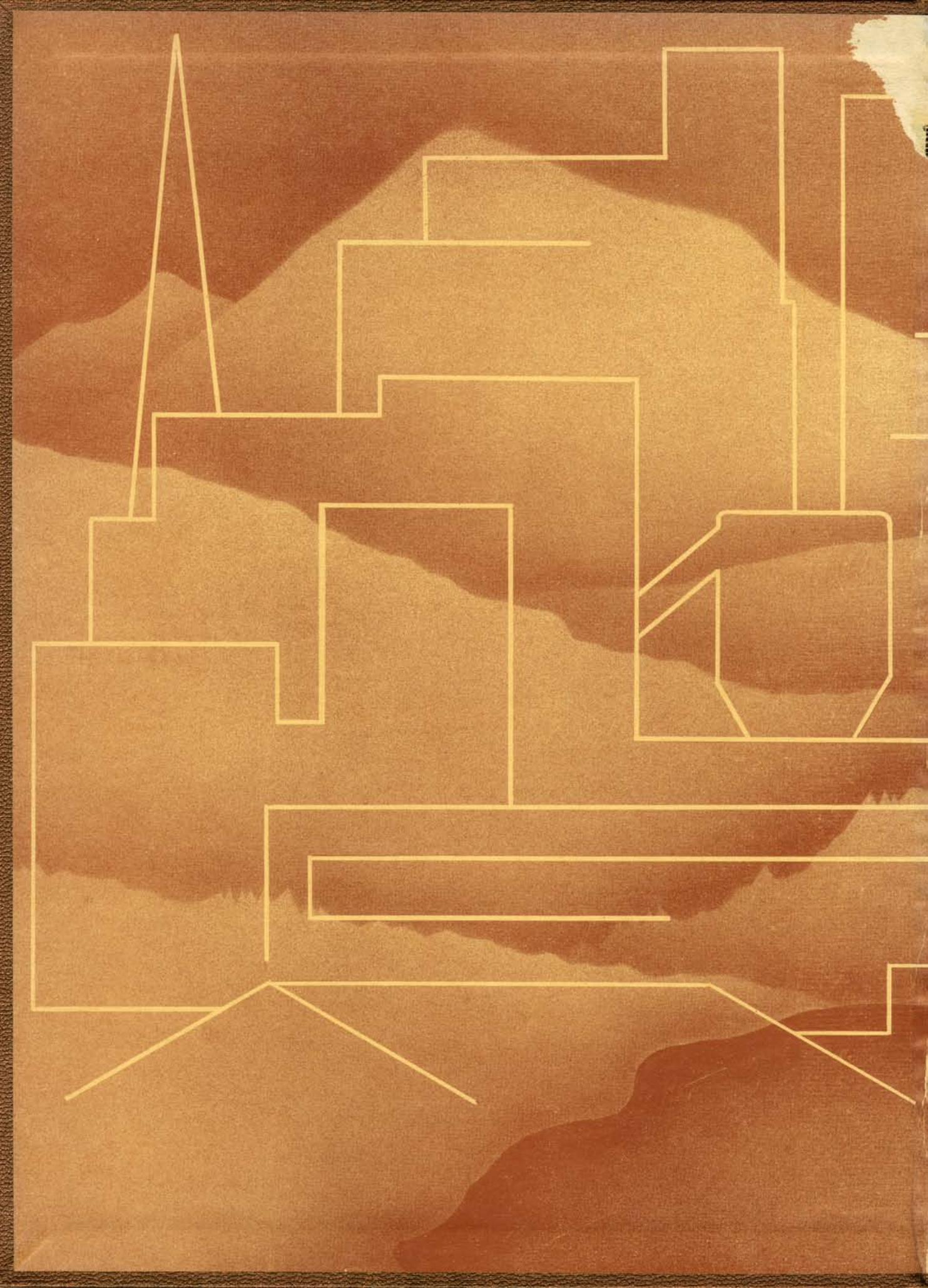
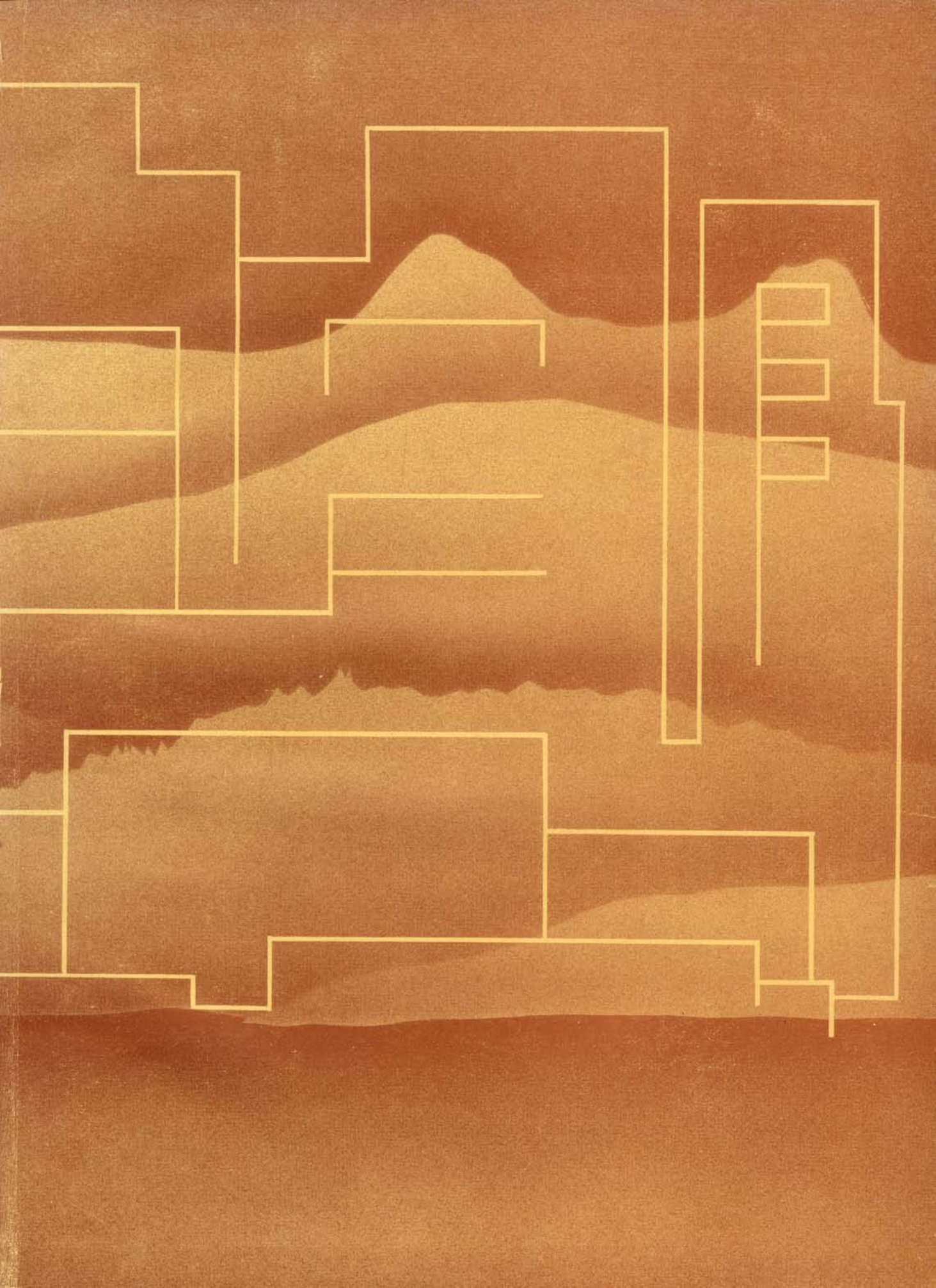


Philipson

'53





Foreword . . .

Western Washington College of Education congratulates the city of Bellingham as it celebrates the completion of its first one hundred years. City and College have grown and prospered together. They will continue to be mutually helpful and increasingly friendly.

The Klipsun--1953

Western Washington College of Education
BELLINGHAM, WASHINGTON

Editor Audrey Bowman
Business Manager Dona Isaacs
Art Work Alexander Zawacki
Student Photography . James Stewart, Ron Camfield



Old Main

The Library



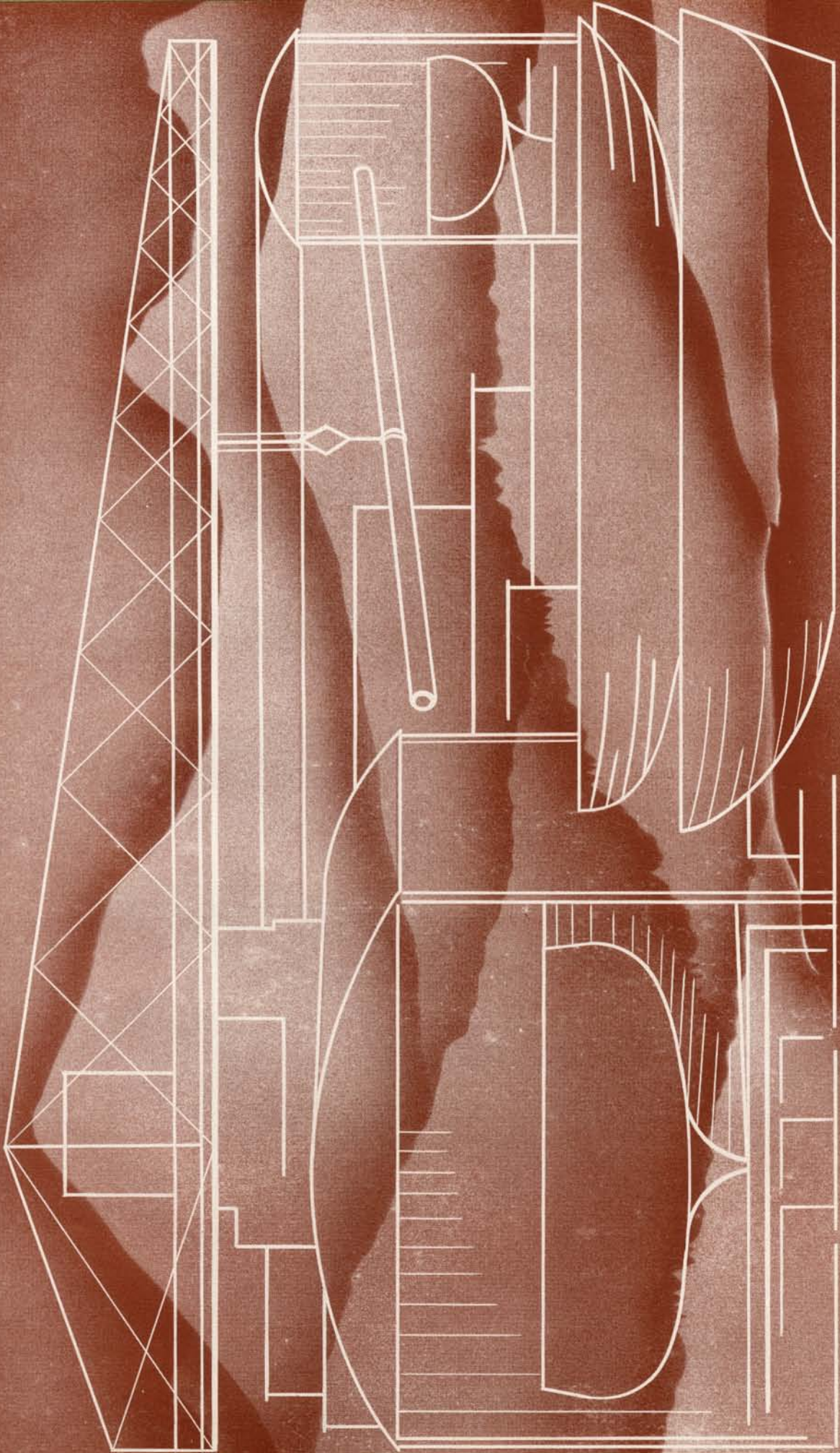


Edens Hall

Men's Residence Hall



**A
D
M
I
N
I
S
T
R
A
T
I
O
N**





DR. HAGGARD

1953 marks the fourteenth year of leadership for Dr. W. W. Haggard as president of Western Washington College of Education. Dr. Haggard has not only been successful as an academic leader, but has helped to bring about in the past years new developments in the College that have been a benefit both to campus and students.

The current year has brought distinguished educators to the campus as guests of Dr. Haggard and the College. Dean Anna Rose Hawkes of Mills College spent several days here in February in behalf of the American Association of University Women.

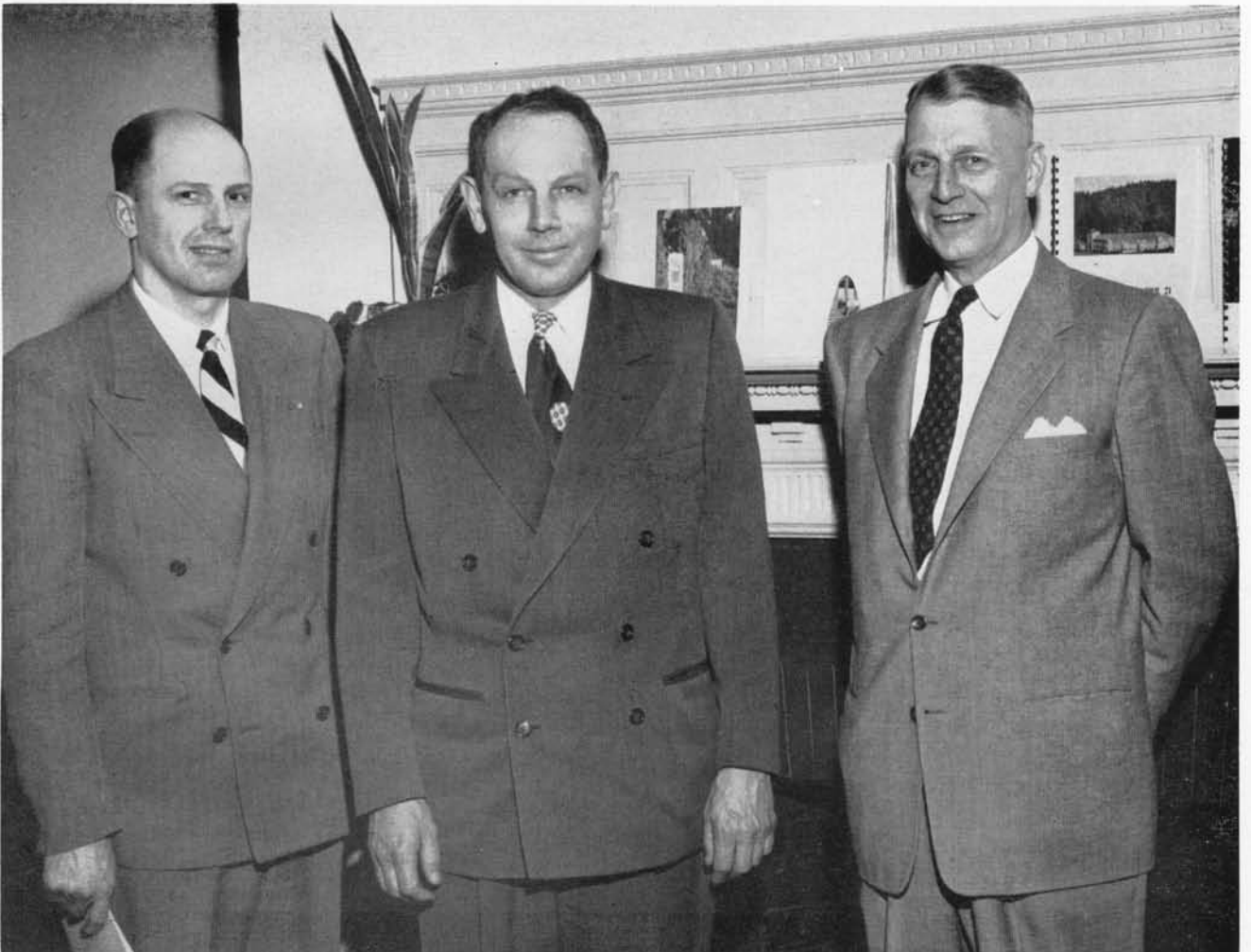
A group of faculty men from Western colleges, headed by Dean Reginald Bell of San Francisco State College, also made one of the visitations for evaluation sponsored by the American Association of Colleges for Teacher Education.

Three outstanding gatherings, the Northwest Music Educators conference, the Washington Art Association convention, and the Northwest General Education conference, helped to make the year 1953 a memorable one for President Haggard, the faculty, and the students.

TRUSTEES

The Trustees of the College are Burton A. Kingsbury, lawyer of Bellingham, chairman; Donald Eldridge, Eldridge's Stationery Store of Mount Vernon, an alumnus of the College, secretary; and Harry A. Binzer, Comptroller of the Puget Sound Pulp and Timber Company of Bellingham and Alaska. Mr. Eldridge is currently a member of the Washington House of Representatives, and Mr. Binzer has been recently a member of the Senate. The College is fortunate in its Board of Trustees.

The powers and duties of the Trustees are defined by statute. Considering both the legal provisions and the present practices, the responsibilities of the Trustees may be classified in three categories, namely: formulation of College policy; evaluation of program and practice; and public relations. An example of policy formulation is the faculty salary schedule or the student fee schedule; an example of evaluation is the decision to continue or to expand a department; and an example of the public relations duty is the interpretation of the College to the community.



D. Eldridge, B. Kingsbury, H. Binzer

Administrators



Left to right: Ferris, Kuder, O'Neil



DR. HAWK

The Campus school is the workshop where the prospective teacher gains experience through actual teaching situations. Both the modern campus school and the student teaching program are ably supervised by Dr. Raymond F. Hawk, director of teacher education.

Dr. Hawk has built a reputation of congeniality and responsibility at Western and throughout the state.

Dr. Hawk



DEAN OF WOMEN AND DEAN OF MEN

The two deans, Miss Lorraine Powers and C. W. (Bill) McDonald, are well-known at Western. Together, they generously give much time and effort to regulating the many-sided extra-curricular program, while also ably supervising college residences and living conditions.

In addition to advising women students, Dean Powers teaches mathematics. Dean McDonald finds time to coach the varsity basketball squad and to assist students in securing part-time employment.

Dean Powers, Dean McDonald

MARGARET AITKEN, B.A., M.A.
Physical Education



EDWARD J. ARNTZEN, B.A., M.A.
History



DECLAN BARRON, B.A., M.A.
Physical Science



LUCILLE BARRON, B.A., M.A.
Home Economics



MAY L. BETTMAN
Commercial Studies



MIRA E. BOOTH, B.A., M.A.
Music



HAZEL BREakey, B.S.
Art



LAURENCE W. BREWSTER, B.A., M.A.
Speech



RUTH A. BURNET, B.A., M.A.
English



SENE R. CARLILE, B.A., B.S., M.A. Ph.D.
Speech



SANFORD E. CARVER, B.A., M.A.
Physical Education



KATHERINE CASANOVA, B.A., M.A.
Education



MOYLE F. CEDERSTROM, B.A, M.A., Ph.D.
English



EDNA CHANNER, B.A., M.A.
Industrial Arts



PAYMOND A. CISZEK, B.S., M.S.
Physical Education





LINDA COUNTRYMAN, B.S., M.A.
Home Economics

HOWARD CRITCHFIELD, B.A., M.A., Ph.D.
Geography

RALPH CULLMANN, B.S., M.A.
Physical Science



ALBERT H. CULVERWELL, B.A., M.A.
History

FRANK L. D'ANDREA, B.S., M.A. Ed.D.
Music

PAUL HERBOLD, B.A., M.A.
Speech



IRENE M. ELLIOTT, B.S., M.A.
Education

MAURICE F. FREEHILL, B.Ed. M.A., Ed.D.
Education

HARVEY M. GELDER, B.A., M.A.
Mathematics



ELIZABETH GREGORY, B.A.
Education

MANZER J. GRISWOLD, B.A., M.A., Ph.D.
Sociology

IRWIN A. HAMMER, B.A., M.A., Ed.D.
Education



HERBERT R. HEARSEY, B.A., Ed.M., B.S.,
and M.S. in L.S.
Reference Librarian

ARTHUR C. HICKS, B.A., M.A., Ph.D.
English

PATRICIA HIEBER, B.A., M.S.
Physical Education

LESLIE HUNT, B.A., M.A.
Education



VIVIAN JOHNSON, B.A., M.A.
Education



LUCY KANGLEY, B.A., M.A., Ph.D.
English



HALLDOR KARASON, B.A., M.A.
Education, Psychology



RUTH KELSEY, B.A., M.A.
Art



PRISCILLA KINSMAN, Ph.B., M.A.
Education



FLORENCE J. KIRKPATRICK, B.S., M.A.
Nursing Education



FRED KNAPMAN, B.A., M.S. Ed.D.
Physical Science



KATHERINE E. LANE, B.A., M.S.
Physical Science



CHARLES F. LAPPENBUSCH
Physical Education



JUSTIN G. LONGENECKER, B.A., M.B.A.
Economics



DAVID McDONALD, B.A., M.A., Ed.D.
Education



RUBY D. McINNES, B.A., M.A.
Education



EILEEN McMILLAN, B.A., M.A.
Music



DONALD D. MacPHAIL, B.S., M.A., Ph.D.
Geography





PEARL MERRIMAN, B.A., M.A.
Education

KEITH A. MURRAY, B.A., M.A., Ph.D.
History

SYNVA K. NICOL, B.A., M.A.
Education



JAMES O'BRIEN, B.A., M.A.
English

EVELYN ODOM, B.A., M.A.
Education

ALAN PAWELEK, B.E., Ph.D.
Industrial Arts



MIRIAM L. PECK, B.A., M.A.
Art

HAZEL PLYMPTON, Ph.B., M.A.
Art

JOHN A. PORTER, B.A., M.A.
Education



FRANK PUNCHES, B.A., M.A.
Education

DOROTHY RAMSLUND, B.S., M.S.
Home Economics

BERNARD W. REGIER, B.S.M., M.A.
Music



CHARLES M. RICE, B.A., M.A.
Industrial Arts

J. ALAN ROSS, B.A., M.A., Ph.D.
Education, Psychology

RAY A. SCHWALM, B.S., M.S., Ph.D.
Industrial Arts

JEAN SHEPHARD, B.A., M.A.
Education



WILBUR SHERIDAN, B.A., B.M., M.M.
Music



BEARNICE SKEEN, B.S., M.S.
Education



EDITH STRANGE, B.A.
Music (affiliated)



WILLARD S. SMITH, B.A., M.A.
Economics



LEONA M. SUNDQUIST, B.A., M.S.
Biological Science



HERBERT TAYLOR, JR., B.A., M.A. Ph.D.
Anthropology



ARTHUR THAL
Music (affiliated)



RALPH THOMPSON, B.A., M.A.
Education



ANNA ULLIN, B.A., M.A.
Foreign Languages



ALBERT VAN AVER, B.A., M.A., Ph.D.
English



DON C. WALTER, B.A., M.A.
Music



RUTH WEYTHMAN, B.S., M.A.
Physical Education



NAN WIIK, B.A.
Music (affiliated)



ALEXANDER ZAWACKI, B.S., M.S.
Art



FACULTY MEMBERS NOT PICTURED

MARION BESSERMAN, B.S., M.S., Ph.D.
Physical Science

DON F. BLOOD, B.A., M.A., Ph.D.
Education

RICHARD CHAFFEE, B.S., M.S.
Mathematics

CHRISTINE COTTRELL, R.N.
Nurse

MARK W. FLANDERS, B.A., M.A.
Speech

MILDRED E. HERRICK, B.A. and M.A. in L.S.
Librarian

JAMES HILDEBRAND, B.A., M.A.
Mathematics

ELIZABETH HOPPER, B.A., M.A.
Appointment Secretary

ANNIS J. HOVDE, B.A., M.A.
English

ENID KARSTEN, B.A., B.A. in L.S.
Circulation Librarian

PAUL LUSTERMAN
Music (affiliated)

MIRIAM MATHES, B.A., M.A., B.S., M.S.
Children's Librarian

RUTH E. PLATT, B.S., M.S.
Biological Science

HELEN G. PRICE, B.A., M.A., Ph.D.
Psychology

LOUISE ROLOFF, B.S., M.A., Ph.D.
Physical Education

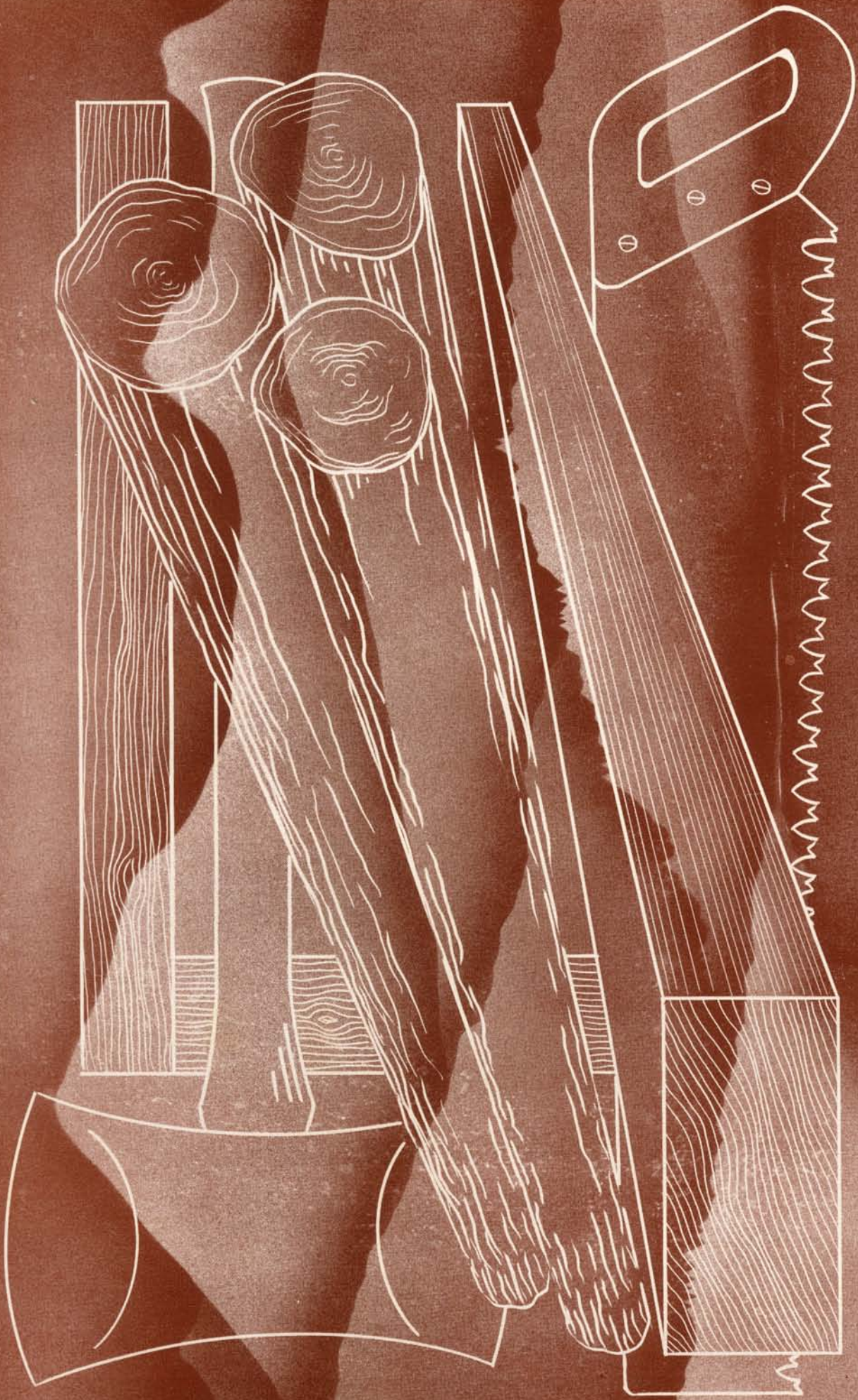
RUTH E. SPEARIN, B.A.
Catalogue Librarian

VIOLA SUMMERS, R.N.
Nurse

STEWART VAN WINGERDEN, B.A., M.A.
Education

PAUL WOODRING, B.S., M.A., Ph.D.
Psychology

**C
L
A
S
S
E
S**





Ray Ondracek



Gerry Royal



Lynn Hunt

Senior

Class

The seniors began their last year at Western under the able leadership of president Ray Ondracek, vice-president Gerry Royal, and secretary-treasurer Lynn Hunt.

To add to their memories of a very pleasant school year they had a senior party and a picnic.

The group with few exceptions say that they will look back on their years at Western with a great deal of satisfaction. Their contribution to Western's success have been made and their gains from the school have been equal to their contributions. Western wishes them well.

Aarstad, Neva

Burlington — Future Teachers of America, College Christian Fellowship, ACE

Albrecht, Phyllis

Berthoud, Colo.—AWS

Angevine, Ed

Seattle — Kappa Delta Pi, Board of Control, Industrial Arts Club



Bailey, Edward

Seattle — Football, Track, PE Club

Barton, Helen

Choir, Blue Barnacles, Arion Club

Batty, Ann

Wenatchee — Arion Club, Kappa Delta Pi, Orchestra



Berry, Richard

Bremerton — Norseman Commission, Future Teachers of America, Square and Circle Club

Blair, Wesley

Chehalis—Norsemen

Bowman, Robert

Bellingham—Choir, Collegian, Klipsun



Brown, Joan

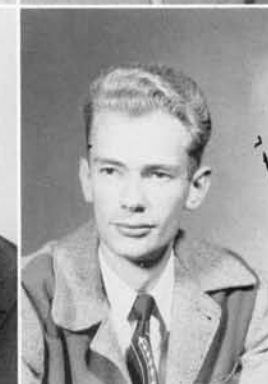
Bellingham—USCF, Off-Campus Women, AWS

Brown, Nancy

Puyallup—AWS

Campbell, Clare

Sedro-Woolley—Choir, Men's Quartet, Norsemen



Carbonatto, Fred

Renton — Golf, W Club, Ski Club

Cary, Maurice

Bellingham—Kappa Delta Pi, Camera Club, Band President

Chapman, Ray

Bellingham—Norsemen





Cole, Margaret

Bellingham — Blue Barnacles,
WRA, AWS



Cornell, Joan

Bellingham—Square and Circle Club, AWS



Croghan, Jack

Aberdeen—Norsemen



Dahlgren, Betty

Seattle—AWS



Davis, Alice

Juneau, Alaska—Future Teachers of America, WSSF Chairman, Drama Club



Dayton, Roland

Bellingham—Norsemen



DeAtley, Mary Jo

Yakima — Square and Circle Club, AWS, Future Teachers of America



Dickau, Clifford

Bellingham—Norsemen



Dickey, Robert

Centralia—Norsemen



Dickinson, Dolores

Bellingham — A W S, W R A,
Future Teachers of America



Dickson, John

Bellingham—Norsemen



Dodsworth, Gerry

Bellingham—AWS



Doherty, Clinton

Neah Bay—Navigator Editor,
Profile Editor, Press Club
President



Donahue, John

Longview—Norsemen



Douglass, Ray

Anacortes—Norsemen

Dustin, Beverley
Bellingham -- Blue Barnacles,
AWS, WRA

Ellin, Kenneth
Anacortes--Norsemen

Estle, Paul
Bellingham -- Norsemen, For-
ensic Club



Evans, Mervyn
Port Townsend--Norsemen

Fahey, Dennis
Portland, Ore.--Norsemen

Fallis, John
Port Orchard--Collegian, Press
Club, Social Science Club



Fee, Donna
Bellingham--WRA, AWS

Fletcher, DeForrest
Friday Harbor -- Norsemen,
Intramural Basketball

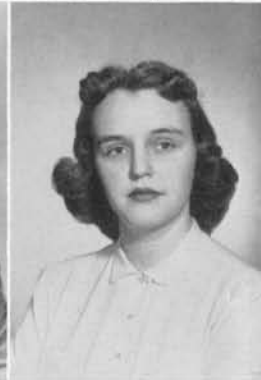
Forsell, Paul
Hoquiam--Norsemen



Fritzberg, Jim
Everson--Norsemen

Gadwa, Francis
Aberdeen--Norsemen,
IA Club

Gallant, Carole
Bellingham -- AWS, Business
Manager Collegian, Collegian
Reporter, AWS



Garber, Kenneth
Seattle--Norsemen

Gaupp, Gloria
Seattle -- Homecoming Queen
1952, Who's Who, Yell Leader

Gentry, Janice
Olympia--Board of Control,
AWS





German, Ken

Maple Falls—Swimming Team,
Kappa Delta Pi, Choir

Gibbs, John

Deming—Norsemen

Glanz, Martha

Centralia—AWS



Gloman, Jo Ann

Bellingham—AWS, WRA
Blue Barnacles

Gowrley, Dick

Pinehurst—Norsemen

Gray, Roger

Seward, Alaska — Press Club
vice-president, Editor of The
Writer, Scholarship Society



Greenleaf, Belle

Seattle—AWS

Gudmundson, Magnus

Point Roberts—Norsemen

Hardie, Mark

Vancouver — ASB president,
Future Teachers of America,
Norsemen



Hardy, Dolores

Everson—AWS

Hartough, Dan

Hoquiam—Norsemen

Hergert, John

Bellingham—Norsemen



Hoof, Bruce

Bellingham—IA Club
Norsemen

Huyge, Joanna

Sedro - Woolley — Valkyrie,
Senior Planning Board, ACE
Treasurer

James, Dorothy

Bellingham—Valkyrie, AWS

Jones, Darrell

Sedro-Woolley — Track, W
Club, Intramural Sports

Jones, Stanley

Bellingham—Norsemen

Kamperman, Nellie

Lynden—Valkyrie, AWS



Keith, Don

Everett—Norsemen

LaFreniere, William

Fort Frances, Ont.—Norsemen

Lagasse, Hector

Bellingham—Norsemen



Lamkin, James

Forks—Norsemen

Lamphear, George

Anacortes—Norsemen

Landahl, Jean

Friday Harbor—AWS,
Majorette



Landahl, Lillian

Friday Harbor — AWS, Kappa
Delta Pi, Valkyrie

Lange, Barbara

Everett—AWS

Legbandt, Ursula

Bellingham—AWS



Linde, Joy

Bellingham—AWS

Linder, Kenneth

Bellingham—Norsemen

Lorentzen, Joanne

Lyman—WRA, Rhea D. Nick-
erson, AWS





Lunde, Alfred

Milwaukee, Wis.—Band, Choir,
CCF

Malnerich, James

Olympia—Norsemen

Mandery, Beverly

Tenino—AWS, Valkyrie,
Choir



Manely, Beverly

Bellingham — WRA treasurer,
Rheba D. Nickerson, Blue
Barnacles

Mathes, Bernard

Bellingham—Norsemen

Mattson, Emma Jean

Vancouver—AWS



McMicken, Shirley

Port Angeles—Blue Barnacles,
Profile, Collegian

McPherson, George

Longview—Norsemen

Miller, Donna

White Salmon—College Christ-
ian Fellowship, Future Teach-
ers of America, Colhecon



Moffitt, Raymond

Camas—CCF, Arion Club,
Viking Camera Club

Moore, Arlen

Longview—Press Club, Klip-
sun Staff, College Choir

Mullen, Neill

Bellingham—Board of Con-
trol, Norsemen



Myhre, Ralph

Silverdale—Norsemen

Nelson, Sue

Burlington—Arion Club, WRA,
Blue Barnacles

Noah, Curtis

Olympia—Ski Club
Norsemen

Oldani, Jo Anne

Willapa—ACE president, Blue Triangle president, Band



Ondracek, Ray

Seattle — Senior Class president, Tennis, Who's Who

Otten, Lee

Maple Falls — IA Club president, Scholarship Society, Norsemen

Oswalt, Bob

Everson—Norsemen



Parnell, Lowell

Bremerton—Norsemen

Penner, Joyce

Seattle—Blue Barnacles, Rheba D. Nickerson Club, WRA

Peterson, Janice

Seattle—Valkyrie, WRA, Blue Barnacles



Peterson, Modris

Latvia—Norsemen, Track, W Club vice-president

Peterson, Wesley

Marysville—Norsemen

Plancich, Vivian

Vashon Island—Valkyrie, ACE, AWS Commission



Pond, Virginia

Bellingham—AWS

Price, Harold

Troutdale ,Ore.—Kappa Delta Pi, ACE, Future Teachers of America

Price, Pat

Snohomish—Valkyrie, Homecoming Committee, Future Teachers of America



Rahmgren, Ruth Ellen

Riverbank, Calif.—WRA, Future Teachers of America, USCF

Reamer, Allen

Bellingham—Drama Club, Norsemen



Reposa, Billie

Anacortes — "Merchant of Venice," Exchange Assembly, Band

Romer, Lois

Sedro-Woolley — Rheba D. Nickerson, WRA, AWS

Ross, Donald

Concrete—Norsemen



Royal, Jerry

Blaine—Senior Class vice-president, Intramural Sports, Norsemen's Commission

Safsten, Curtis

Blaine—Norsemen

Sawyer, Richard

Camas—Norsemen



Scott, Bill

Chehalis — IA Club, Radio Program, Organization of Art Club

Seckel, Harris

Bellingham — Future Teachers of America, Norsemen

Sheets, Jean

McCleary — Kappa Delta Pi president, Inter Club Council president, Who's Who



Skogman, Kenneth

Bellingham—Norsemen

Smith, Martin

Seattle—Kappa Delta Pi, Band, Arion Club

Snapper, John

Lynden — CCF, Square and Circle Club, Swimming Team



Sovde, Lora Lee

Lake Stevens—AWS Commission, Colhecon president, Who's Who

Stibre, Loretta

Seattle—WRA, Rheba D. Nickerson, Blue Barnacles

Stewart, James

Bellingham—Kappa Delta Pi, Scholarship Society, Klipsun Photographer

Strauss, Gertrude

Seattle — International Dance Club, Camera Club, Square and Circle Club

Swanson, Olaf

Buckley—Norsemen

Teller, Margaret

Bellingham—AWS

Thorsen, Robert

Bellingham—Norsemen

Todd, Robert

Lewiston, Idaho, Choir, Industrial Arts, Future Teachers of America

Tucker, Priscilla

Monroe—AWS

Urbick, Margy

Everett—Pep Committee, AWS Commission, Senior Planning Board

Usitalo, Richard

Silverdale—Drama, Debate, Social Science Club

Valentine, Kenneth

Auburn—Ski Club, Inter Club Council, Junior Prom chairman

Walberg, Joyce

Marysville—AWS

Ward, Eleanor Lyan

Tenino — Ski Club, AWS chairman, Homecoming Princess

Ward, Bill

Tenino — Norsemen Commission, Ski Club, Track

Whittaker, Lorena

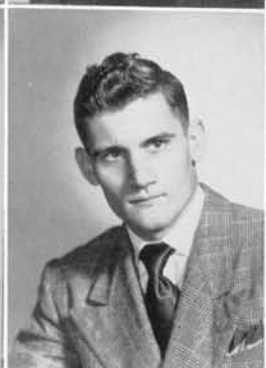
Seattle—AWS

Winters, Rufus

Vancouver—Norsemen

Wolff, Sam

Blaine—Norsemen





Woodman, Robert

Winslow—Basketball,
Norsemen

Young, Joan

Bellingham — Off-Campus
Women, AWS, USCF

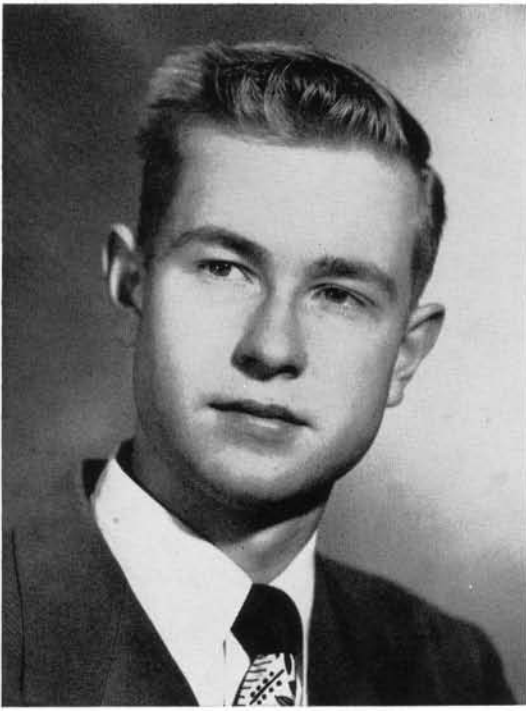
Young, Jack

Bellingham—Yell Leader, Pep
Committee, Norsemen



Ziegler, Ronald

Onalaska—CCF, Band,
Choir



Bob Porter



Benita Offut

Junior Class

Looking back over the year we find that the junior class, under the leadership of Bob Porter, Carolyn Crook and Benita Offut, has made a record of outstanding achievement at Western. The year of 1952-53 has been a bright one for those completing their third year of college.

Nancy Jo Roberts and Spud Miller were co-

chairmen of the very successful Junior Prom. The picnic held in the spring was a bright climax to an eventful year.

Looking forward, the juniors are seen stepping into the places of leadership vacated by those who are leaving the campus for a wider field.



Carolyn Crook



Anderton, Keith
 Andrews, Peggy
 Agnew, David
 Ahues, Minnie

Albers, Mary Jo
 Baxter, Patricia
 Beeston, Les
 Bergeson, Neil

Borchers, Donald
 Buhtz, Alice
 Byers, Doris
 Campbell, Dale

Callahan, Mary
 Chenier, Walt
 Clark, Betty
 Collyer, William

Daines, Virginia
 Downing, Joyce
 Evans, Phyllis
 Federico, Carmela

Fisher, Sue
 Fredrickson Monica
 Freeberg, Carlin
 Friberg, Lorraine

Goldade, Rita
 Gregor, Alton
 Guthrie, Dick
 Hancock, Marrienne

Harvey, Leota
 Haug, Frain
 Haycox, William
 Hayward, Georgina



Hill, Art
 Hewitt, Dorothy
 Hoggins, Dale
 Hoyt, MaryAnn



Huber, Donna
 Hudson, Bonnie
 Johnson, Dexter
 Johnson, Marie



Kazen, Douglas
 Kidd, Beverly
 King, Sheelagh
 Kluksdahl, Harris



Know, James
 Knutsen, Wil
 Konsa, Esther
 Kratz, Whitfield



Little, Deloy
 Maxfield, Jesse
 Miller, Morris
 Rockey, Dale



Murphy, Wally
 Newman, Paul
 Norman, Remo
 O'Conner, Mary Lou





Odell, Allen
 Oelrich, Delores
 Oelrich, George
 Oelrich, Mary

Oliver, Marlene
 Olson, Mary Ann
 Oril, Richard
 Pierce, Mary

Porter, Robert
 Ralph, Peggy
 Reinert, Gerald
 Roberts, Nancy Jo

Rogers, Jean
 Ross, Rosemary
 Shannon, Wilma
 Shell, Mel

Shuman, Jeanne
 Sloan, Frances
 Smith, Wayne
 Stevenson, Joyce

Sommers, Frances
 Virkelyst, Lilly
 Wahl, Linda
 Wolf, Dean



Lorrene Bergmann, Barbara Hazlett, Glori Mutch, Roy Cohrs

Sophomore Class

With one eventful year behind them, the sophomores again started the year out right under capable leadership, with Ray Cohrs as president, Lorrene Bergmann and Barbara Hazlett as vice-presidents, and Glori Mutch as secretary-treasurer.

The capabilities of the sophomores were well known after they won first place on their float for the "Western Pow-Wow" Homecoming celebration.

In the following quarters the sophomores participated in many activities with the sophomore class picnic one of the highlights.



Abernethy, Annette
Bartruff, Jeanette
Bell, Bessie
Benjamin, Marie
Bergan, Marcia



Bergmann, Lorrene
Berry, Jack
Bright, William
Burchett, Edna
Burger, Robert



Camfield, Ronald
Campbell, Charles
Carver, Barbara
Clarke, Verna
Davis, Barry



Dick, Peggy
Donovan, Carol
Dudley, Eleanor
Duncan, Lorraine
Dunham, Gwinn



Dye, Richard
Elliott, Ann
Evans, Allen
Finch, Nancy
Folk, Diane



Gallant, Harvey
Gray, Beverly
Gray, Eugenia
Gollan, Beverly
Hanson, George



Hazlett Barbara
Honcoop, Jim
Houghton, Meech
Hovik, Shirley
Howard, Barbara



Huff, Marilyn
Johnson, Marilyn
Johnson, Neva
Jones, Mary
Keene, Carolyn

LeWarne, Charles
 Lord, Harriet
 Mallonee, Margaret
 Martinson, Charlotte
 McLane, Donna



McHargue, Kathy
 Marjory, Meier
 Moe, Pete
 Morton, Shirley
 Nelson, Pauline



Newell, Pete
 O'Sammon, Mike
 Pirrung, Hazel
 Rector, George
 Renshaw, Kenneth



Reinholt, Joan
 Reimer, John
 Rule, Rita
 Samuelson, Kathleen
 Simon, James



Sedell, Geneva
 Sinclair, Joanne
 Sinclair, Patricia
 Smith, Anita
 Smith, Lynnette



Smith, Pat
 Smith, Ruth
 Stephan, Edna
 Stow, Shelia
 Sullivan, Colleen



Sundahl, Reynold
 Ticknor, Charlotte
 Tabor, Ross
 Van Woudenberg, Grace
 Van Zante, John



White, Bob
 Wiedenbach, Avis
 Wiese, Fern
 Winters, Carol Lee
 Wilkinson, Virginia





Wolgemuth, Joan
Wray, Donna
Young, Marilyn
Forbes, Ruth
Krull, Richard



Larry Lunsford, Carol Resner, Mary Ann Ohrt, Jack Top

Freshman Class

Five hundred and thirty-one frosh entered Western this year (education, 225; liberal arts, 90; junior college, 216). The girls (222) appreciated the stag-line of boys available in the freshman class (309).

Class officers were elected during the second hustling week of fall quarter. They were: president,

Larry Lunsford, assisted by Jack Top as vice-president; Carol Resner, secretary; Mary Ann Ohrt, treasurer.

The unique class picnic in the spring at Bloedel-Donovan park brought to a close freshman life for the 1952-53 neophytes.



Aagard, Kenneth
 Aldrich, James
 Alger, Dale
 Alvord, Mary
 Armstrong, Marlene
 Atwood, Warren
 Baulton, Gwenth

Beck, Frank
 Bennett, Alice
 Bonner, Bonnie
 Botsford, Louie
 Branick, Virginia
 Bravender, Eleanor
 Brown, Eugene

Brownrigg, Richard
 Bryant, Leslie
 Butler, Ted
 Byers, Barbara
 Beverly, Campbell
 Carlbon, Janice
 Carlson, Elizabeth

Carlson, Wayne
 Carpenter, Gertrude
 Cass, Romona
 Chandler, Martin
 Chudeck, Lois
 Clark, Jo Anne
 Couplin, Maureen

Crook, Judith
 Dahl, Myrna
 Daniels, Irma
 Daverin, Don
 Dimick Ruthanne
 Dexter, Mary Ann
 Dixon, JonnaLu

Dralle, Wayne
 Eden, Donna M.
 Elsbree, Jack
 Estergreen, Dale
 Fehlhaber, Nancy
 Flickinger, Mary Lee
 Ford, Myrtle

Fralich, Naoma
 Frazier, Lynn
 Frye, Mary Lou
 Gabrielson, Gordon
 Garrett, Marilyn
 Giger, Bob
 Gimurto, Steve

Gilmore, Bill
 Grabner, Gladys
 Grace, Lucille
 Gragg, June
 Graham, Harry
 Granger, Ardith
 Gudbranson, Bruce

Guntner, Frank
 Gustafson, Maureen
 Haan, Janet
 Hall, Ronald
 Handwell, Robert
 Hitch, Virginia
 Hodgson, James

Hoffeditz, Marilyn
 Jansen, Donell
 Jarvis, Janet
 Jensen, Bob
 Johnson, Delores
 Johnson, Wilfred
 Jorgenson, Jim



Kephart, Joy,
 Kerns, Bob
 Kidd, Larry
 Kintner, Gordon
 King, Maxine
 Knight, Roberta
 Knox, Susan



Knutson, Kenneth
 Koert, Murella
 Kohler, Dick
 Kuljis, Mary Anne
 Leslie, Donna
 Lochbaum, Nancy
 Lunde, Patricia



MacKenzie, Kay
 Magelssen, Gerald
 Mallahan, Kathleen
 McConnell, Albert
 McConnell, Robert
 McCormick, Gerald
 McCormick, Hays



McGinnis, Nancy
 Medley, Eleanor
 Miller, Mary Ann
 Monroe, Richard
 Morsman, Darlene
 Mountjoy, Donna
 Mulford, Carol



Muscutt, Leslie
 Myers, Mary
 Nelson, Virginia
 Ness, Merydee
 Neudeck, Patricia
 Nienaber, Arlene
 Northrup, Charles



Obermueller, Carol
 Ohrt, Mary Ann
 Olson, Leola
 Ostrom, Geraldine
 Otness, Norman
 Pederson, David
 Pippenger, Dorrene



Pirrung, John
 Pinkerton, Guy
 Poaler, Beverly
 Preston, Eunice
 Rameau, Lauren
 Rehberger, Gerry
 Reinke, Duane



Rice, Beverly
 Ricketts, John
 Riehl, Dick
 Riggs, Dorothy
 Resner, Carol
 Rhinehart, Beverley
 Robuson, Charles





Row, Marlene
 Sadler, Jack
 Schlagel, Viola
 Scribner, Marilyn
 Silliman, Nancy
 Smith, Carole
 Smith, Raymond

Speck, Jane
 Spike, James
 Stanley, Donna
 Stenman, Gordon
 Stevenson, Donna
 Stevenson, Mary
 Sutherland, Sally

Sunitsch, Ann
 Taylor, Charles
 Taylor, Jean
 Taylor, Ray
 Tidball, Helen
 Tinkham, Fern
 Top, Howard

Tozier, Grey
 Trafton, Nancee
 Trames, Tommy
 Truman, Jacqueline
 Twing, Larlene
 Umphlette, Jeane
 Urch, Dolores

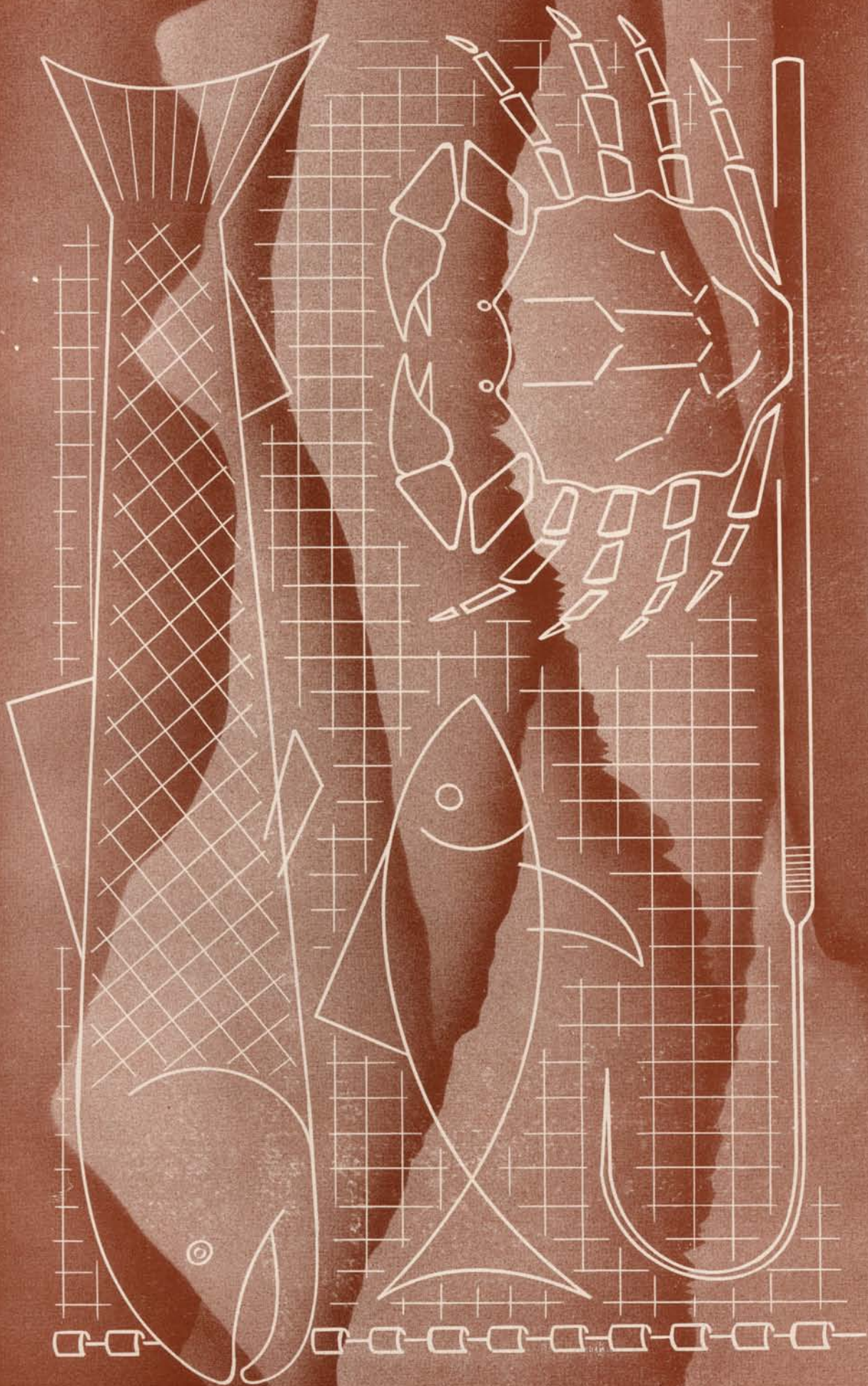
Vann, Mary Lou
 Vuylesteke, Virginia
 Vitaljic, Vera
 Wardell, Nancy
 Walters, Dorothy
 Wells, William
 Wilson, Lew

Westman, Lee
 Westland, Kyle
 Westover, Zoanne
 Williamson, Betty
 Wilson, Harriet
 Winn, Marilee
 Witter, Wanda

Zugelder, Marian

**S
T
U
D
E
N
T

L
I
F
E**





Graduation day for the class of 1952.



Top left: Paying entrance fees.
 Top right: Finished that job!
 Center left: The first step.

Center right: Champion waffle eaters.
 Bottom left: Card, cards, cards, cards.
 Bottom right: The Colhecon's waffle supper.



Elected to reign over the twenty-ninth annual Homecoming, as Queen Sigrid XV was Gloria Gaupp, a popular and highly active co-ed from Seattle. Her beauty as well as her sparkling personality won her the royal job.



The four beautiful girls who were chosen as representatives of their classes for Queen Gloria's court were: Margy Urbick, a senior from Everett; Carolyn Crook, a junior from Bellingham; Lorrene Bergmann, a sophomore from Camas; and Helen Tidball, a freshman from Buenos Aires, Argentina. These girls added their talents and beauty to help make the 1952 Homecoming a great success.



"Heap big doings" told the tale of Western's 1952 Homecoming Pow Wow. This year the combined efforts of Rita Goldade and Bob Porter truly turned the campus into a real life reservation.

Chosen by the student body to reign over the tribal festivities as Queen Sigrid XV, was Gloria Gaupp, 21 year old senior from Seattle. The celebration swept successfully through the two days and ended traditionally with the Queen's Homecoming ball at the Bellingham Armory.



Upper left: Homecoming chairmen and Dr. Haggard

Middle left: Washing up after the waffle supper

Lower right: Ed Angevine setting a display

Bottom left: Display in the IA Building

Upper right: Redecorating?



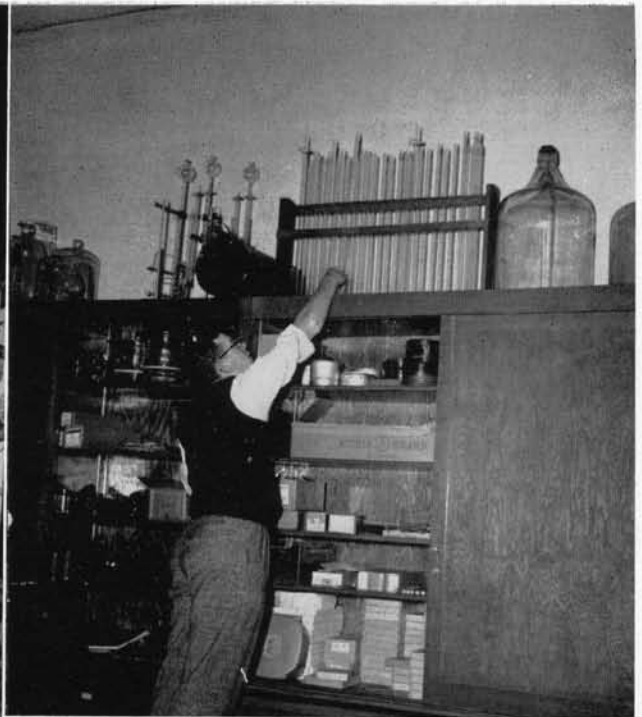
Top left: Mrs. K.'s science lab.

Center left: Leisure time!

Top right: A close race.

Bottom left: Listening to a science lecture.

Bottom right: Beginning a few laps.



Upper left: CCF's Valentine Sweethearts
Upper right: Harris Kluksdahl in Science Lab.

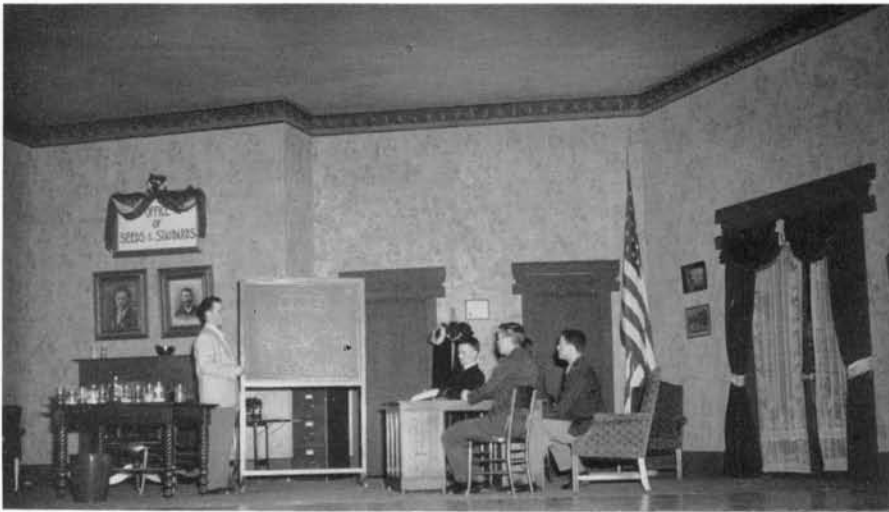
Lower left: Tossing balls at the WRA Carnival.
Lower right: CCF—February Banquet.



Samuel Spewack's comedy satire of government bureaucracy, "Two Blind Mice," was presented February 13 and 14. Laurence W. Brewster directed, and Mark W. Flanders was technical adviser.

The fun built up from the entrance of Tommy Thurston, Henry Howe, into the lives of the blind mice, alias Georgine Hayward and Alice Jean Davis, until the final defeat of Senator Kruger, Jim Simon, who was responsible for the abolition of the Office of Medicinal Herbs four years before. Of course there was the eternal triangle of love and tears provided by Thurston's ex-wife Karen, Donna Wray, and Dr. McGill, Floyd Jackson.

"... I remember an agency which was supposed to be abolishing an agency which was supposed to be abolishing an agency from World War I. However, we're all caught up on the war of 1812."



"Uncle Harry" ushered in Laurence W. Brewster's leadership of the Division of Drama. The play also was the first play under the technical direction of Mark W. Flanders.

The fall quarter play was unique in that it consisted of three separate sets which were covered by a mobile 39 foot ceiling. "Uncle Harry" was a more serious drama than had been presented in recent years.

The leads of this murder mystery with a different twist were Charles Dennis as Uncle Harry; Harriet Lord as Hester; and Carol Resner as Lettie.

"On my way, that's a good one. They say murder will out. But not Uncle Harry's murder, not my murder . . ."



Upper left: A bus trip to Mount Baker.

Lower left: Wow! That sun!

Upper right: Trying out a step.

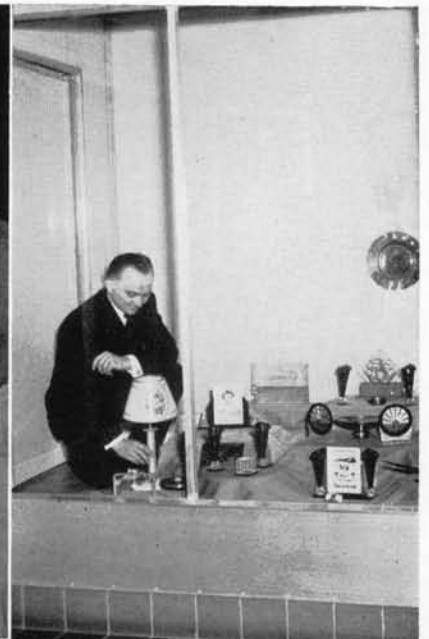
Lower right: Swing your lady back home.

Center right: Girls in the center.



Top: Ivan Hickenbottom, winner, as Ugly Harry.
 Lower left: Audience watching the crowning of Ugly Harry.

Center left: Receiving a kiss from Phylis Skinner.
 Lower right: Such liveliness!
 Center right: Larry Lowery wins second prize.



Upper left: WRA Carnival scene.

Center left: Western's second floor zoo

Lower left: Five serious faces.

Upper right: Dr. Pawelek with IA display.

Center right: Colhecon waffle supper.

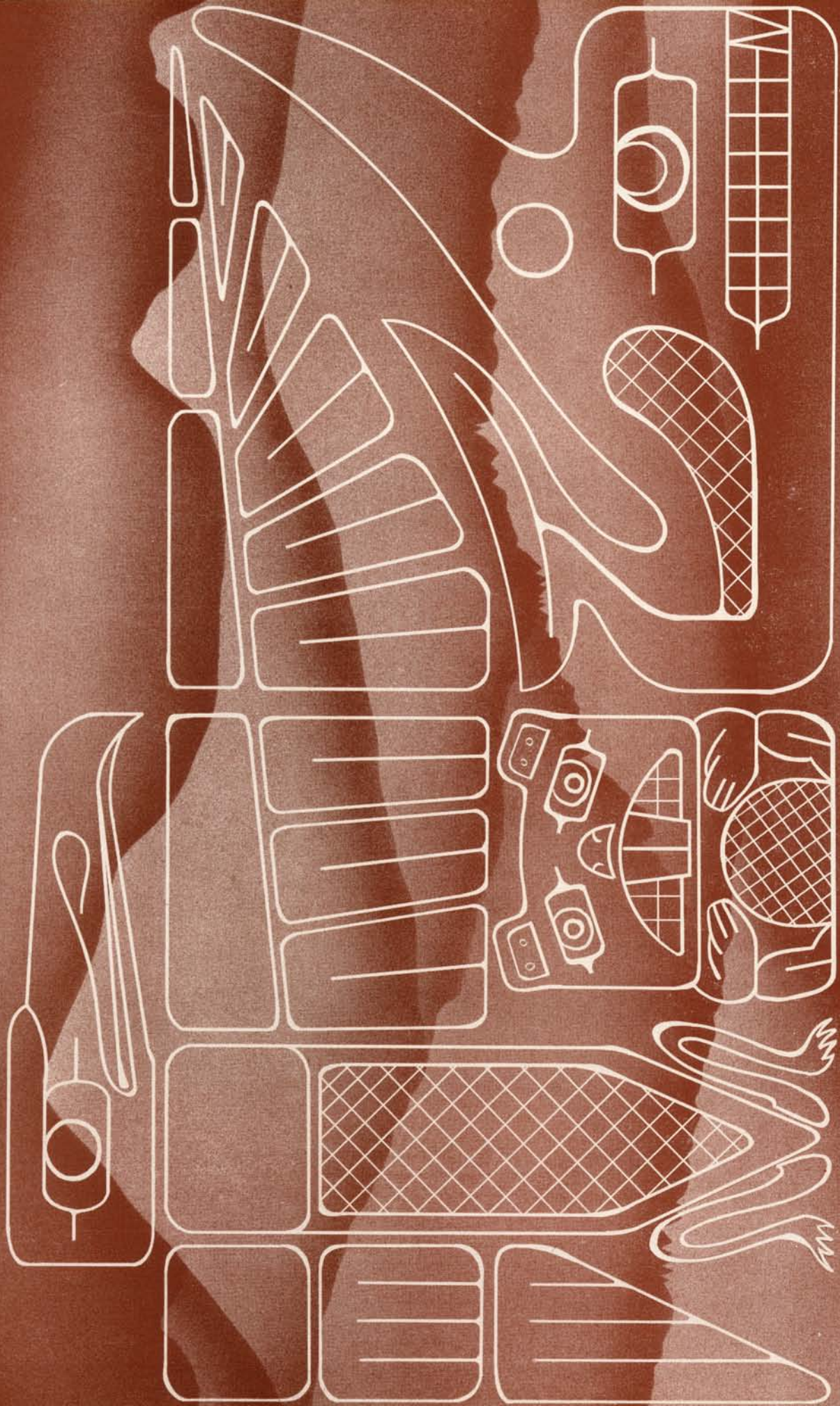
Lower right: Look out for that ball!



The theme of the 1952 Campus Day, held May 14 at Whatcom Falls Park, was Dog Patch Daze. Co-chairmen were Dick McClure and Lollie Hagen. The King and Queen, Tony Royal and Ann Garcia, were crowned at the Sadie Hawkins Hoe-down at which the first prize for skits was presented to Senior Hall.

The Skunk Hollow contests held in the afternoon were: Beard Judging, Men's Nipple Contest, Guzzling Contest, Women's Slipper Kick, Faculty Sack Race, Three-Legged Race, Pie Eating Contest, Faculty-Student Tug o' War, Sadie Hawkins Race, Dr. Haggard's Horseshoe Game, and the Faculty-Student Ball Game.

**O
R
G
A
N
I
Z
A
T
I
O
N
S**



BOARD OF CONTROL

The Board of Control successfully carried out several new projects during the busy and eventful year of 1952-53.

One of their projects was the initiation of a plan to have a mural in the student lounge. A committee was also set up to administer the funds for the Student Union building. To insure wide representation, the committee is comprised of one faculty member, two students, one alumnus, and one member of the Board of Trustees.

Much time, effort, and money was spent on the improvement of the Lakewood property. The activity was begun last year and continued through this year, under the guidance of the student facilities committee and volunteer groups of men students working on the property week-ends.

Other changes by the Board included the raising of the athletic standard. In order to receive an award, athletes must now have a grade



BOARD OF CONTROL

Back: Mark Hardie, Bill Collyer, Paul Dodsworth, Dr. Critchfield, Dick Stewart, Neil Mullen, Mr. Gelder, Ed Angevine. Front: Bonnie Dale, Gerry Dodsworth, Elaine Ondracek, Betty Grocott, Miss Hieber, Bob Porter.

point average of 1.75. The Writer was added to the group of student publications controlled by the Board.

One of the BOC's major contributions to college life is the sponsoring of student attendance at conferences held at other institutions.

As the new constitution was put into use, difficulties arose, especially in the area of elections. It can be said, however, that benefits did evolve from the confusion, as students were made aware of the importance of having a sound constitution.

In addition to the innovations of the year, the Board of Control continued its capable supervision of financial affairs, properties, policies, and appointments.

The College Artists and Lecturers series is made available to students of Western each quarter by funds allotted by the Board of Control. A series of nationally and world known artists and lecturers are presented each week. Some of the celebrities who appeared this year are Edward Weeks, literary editor of the Atlantic Monthly; Louis Kaufman, violinist; and Margaret Bourke-White, internationally famous photographer. The programs were chosen by a student-faculty committee.



Officers—Mark Hardie, president; Paul Dodsworth, vice president.

Kappa Delta Pi

Kappa Delta Pi is an honorary society which recognizes the importance of high professional, intellectual, and personal standards for teachers. The members have met regularly throughout the year with well planned programs in charge of the following officers: president, Jean Sheets; vice president, Wes Martinsen; secretary, Nancy Brown; treasurer, Lynn Hunt.

Dr. Irwin Hammer is Kappa Delta Pi adviser.

College Christian Fellowship

Bible study and inspirational group singing have helped the College Christian Fellowship to attain their goal of spiritual development and fellowship.

The club has had many distinguished speakers this year. The highlight of activities was the CCF Valentine banquet the first week of February. The members elected Valentine sweethearts for the occasion. Officers for this year were: president, Kenny Linder; vice president, Harriet Lord; secretary, Ruth Forbes; and treasurer, Tom Hill.

Row 1: E. Angevine, L. Hunt, A. Battey, N. Brown, B. Lange, E. Rossel, R. Dickey, G. Amundson, J. Morgan.
 Row 2: C. Lund, E. Ondracek, M. Pederson, A. Kohler, B. Foss, B. Wolf, M. Smith, M. Hall, J. Sheets, W. Martinson, W. Kratz, J. Hergert. Row 3: Dr. Hammer, M. Cary, J. Brown, V. Pond, K. Linder, S. Leathers, L. Beeston, K. German.



Row 1: S. Martin, S. Knox, D. Dickenson, B. Dahlgren, L. Friberg, J. Crook, A. McKinney, P. Lunde, L. Freeberg, L. Duncan, C. Crook, G. Bolton, H. Wilson, V. Clarke, J. Clark.
 Row 2: H. Howe, H. Lord, J. Shumann, S. Teshera, J. Speck, N. Vanstone, R. Slotemaker, J. Young, K. McKenzie, M. Brown, M. Oelrich, P. Skinner, M. Scribner, M. Burchett, T. Burchett, R. Ziegler.
 Row 3: F. Sizelove, E. Nelson, W. Orbeck, R. Camfield, M. Baldwin, D. Miller, M. A. Bailey, M. Malone, A. Lunde, D. Deniston, J. Neilson, E. Schellenberg.
 Row 4: B. Samms, A. Brown, T. Hill, D. Twing, M. Voglert, E. Aandahl, K. Linder, B. Collyer, W. Coffelt, R. Neilson.



Front: C. Lund, M. Urbick, V. Plancich, F. Huyge, L. Hunt.
 Back: G. Royal, K. Valentine, R. Scott, R. Ondracek, E. Angevine, D. Mansur.

A W S

"Hours for girls at Western" has long been a controversial subject on campus and it seemed appropriate that the AWS should have opened their first meeting of the year with that as their topic.

Five girls attended a four-state convention at Washington State College November 7, 8, and 9. Winter quarter AWS sold punch at the Senior Hall barn dance and contributed the proceeds to the

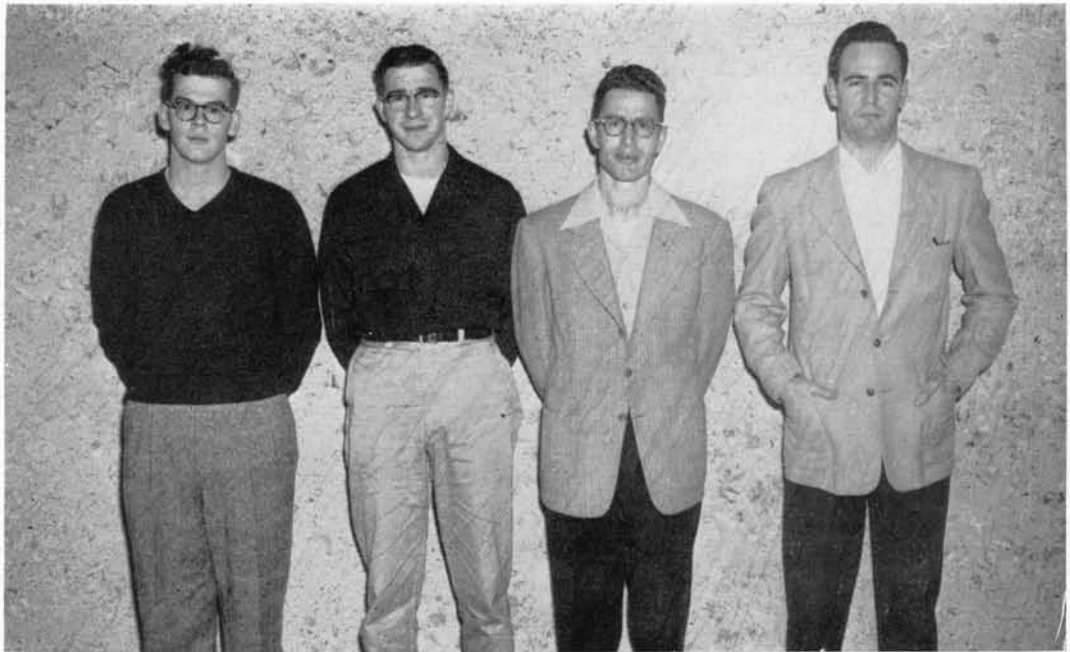
World Student Service Fund.

A tea was held on Valentine's day when the guest of honor was Dr. Anna Hawks, Dean of Mills College, Oakland, California.

Spring quarter the girls sponsored a Tolo. Their last event of the year was a picnic at Lakewood for all the old and new officers.

AWS entertains high school guests. Pouring, Miss Ruth Kelsey; Virginia Wilkinson, chairman, High School Leaders conference; third from right, Phyllis Skinner, AWS president.





H. Kluksdahl, W. Smith, W. Kratz, R. Gray.

NORSEMEN

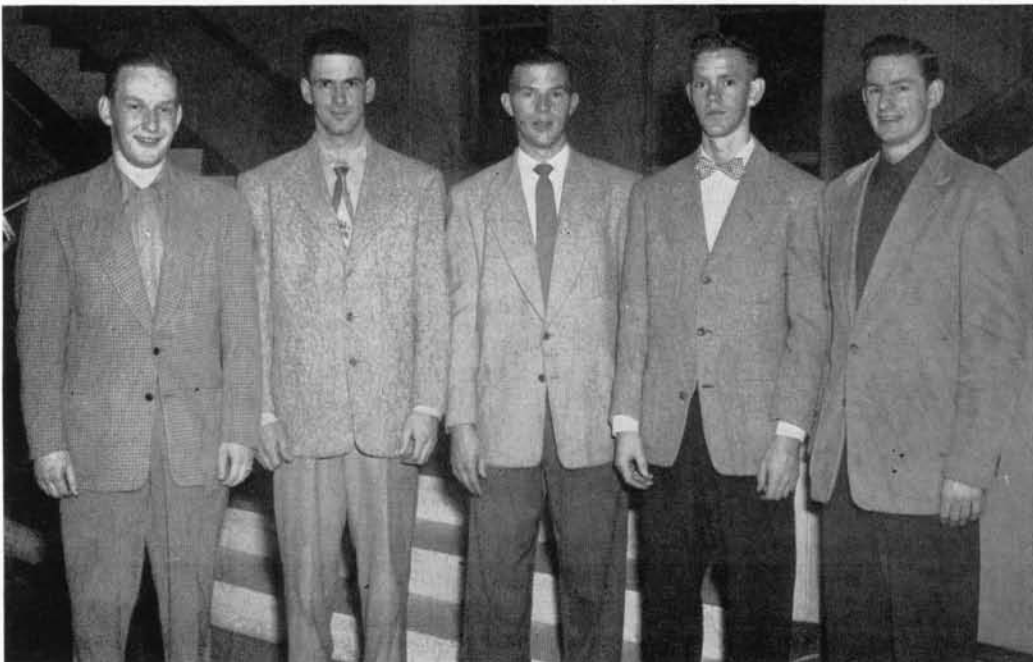
With a membership comprised of every man student attending WWC, the Norsemen has completed an active year. The governing body is the Norsemen Commission with Bill Ward, president; Marv Nilsen, vice president; Ray Ondracek, secretary; and Gerry Royal, treasurer.

Among the year's activities were the fall semi-formal dance at the Bellingham Hotel and several interesting assembly programs.

C. W. McDonald, dean of men, is the adviser.

SCHOLARSHIP SOCIETY

To recognize and stimulate high scholarship ideals is the purpose of the Scholarship society. The grade point requirement is 3.5. Students who have been in attendance at Western for one quarter and who have 105 or more quarter hours of credit are eligible for invitation to membership. Edward Arntzen, chairman of social studies, is adviser for the group. Officers this year have been: president, James Stewart; vice president, Harris Kluksdall; secretary, Lynn Hunt.



B. Aho, R. Ondracek, B. Ward, Morris, G. Royal.

ACEI

Bloedel-Donovan park was the scene of ACE's "get under way" meeting. Dr. Anna Hawks spoke informally on the aims of ACE. The first project of the quarter was a drive to bring new members into the club.

Various campus faculty members spoke at meetings during the year. Frank Panches spoke on discipline in the schools and Dr. Howard Critchfield compared the school system of New Zealand to that of the United States.

Spring projects were a membership drive and sending a delegation to Tacoma for the state ACE convention.

RHEBA D

Raising enough money to send delegates to the Northwest district convention of the Association for Health and Recreation in Missoula, Montana, was the special problem of the Rheba D Nickerson club this year. A "car wash project" was initiated and the club was able to pay travel expenses for its delegates.

The club also directed the campaigning for Western's annual blood drive.

Row 1: M. Ahues, P. Nelson, A. Kohler, J. Huyge, M. Pierce. Row 2: L. Sovde, M. Glanz, V. Daines, J. Downing, A. Abernethy. Row 3: J. Brown, V. Planchich, P. Gibson, J. Unterwegner, T. Almasi, P. Baxter.



Row 1: J. Gloman, B. Manely, M. Cole, L. Romer. Row 2: S. Hovik, E. Ondracek, J. Peoples, W. Shannon, M. Hoyt. Row 3: P. Hackett, L. Stibre, J. Walbert.

CAMERA CLUB

Fine photography is meat and drink to Camera club members, who have their hobby on their minds wherever they go. Their salon exhibiting the year's best camera work was an outstanding feature of spring quarter.

Faculty advisers are Miss Katherine Lane, Dr. David McDonald, Ralph Cullmann, and Edward J. Arntzen. The officers for the year were: R. Moffitt, president; G. Magelson, vice president; and R. Camfield, secretary-treasurer.

OFF CAMPUS WOMEN

Participation in campus activities is made easier for women not living in organized houses by the large and lively club, Off Campus Women. Regular meetings and service projects supporting the College are kept up throughout the year. The girls of the club sponsored one of the AWS teas and also the ugliest man contest held at the AWS dance. Mrs. Ruth Spearin is faculty adviser. The officers for the year were Loretta Olsen, president, and Jean Reinholt, vice president.

F. Elsberry, M. Cary, R. Campfield, P. Enga, Dr. McDonald, M. Chandler, G. Magelson, R. Moffit, R. Kreps.



Row 1: J. Crook, J. Redmond, M. O'Connor, L. Friberg, M. Huff, S. Broomall. Row 2: Mrs. Spearin, C. Sealander, C. Muir, L. Wahl, A. Patrykus, M. Jones, F. Sloan. Row 3: A. Smith, R. Gladwin, S. Bassett, L. Natrass, J. Reinholt, J. Walberg.

Row 1: R. Pippinger, J. Kephart, D. Dickinsin, J. Huyge, B. Hudson, P. Nelson, A. Abernethy, J. Cornell.
 Row 2: M. Ness, D. Miller, L. Grace, M. Albers, P. Albrecht, L. Sovde, S. Palmer.
 Row 3: J. Carlson, D. Cooper, V. Planchich, D. Wallace, M. Hardie, R. Camfield, H. Seckel, M. DeAtley.
 Row 4: D. Berry, D. Moore, D. Kerr, R. Cohrs, C. LeWarne, J. Galletly, A. Sherman.



Row 1: J. Downing, E. Burchett, M. Rockwell, B. Donnelly, L. Winters, A. Abernethy.
 Row 2: P. Baxter, D. Stevenson, A. Smith, L. Olsen, J. Wolgemuth.
 Row 3: L. Barron, L. Sovde, M. Bailey, L. Rameau.

Future Teachers of America

A swimming party at the YMCA in October got the Future Teachers of America members off to a good start. Fall quarter Eugene Reagan, president of the Bellingham Class Room Teachers, spoke on FTA's role in the college.

The annual Founder's Day banquet was held at Edens hall February 16. February 28, representatives were sent to Seattle Pacific to the state meeting. Bill Moores was elected state secretary.

Spring quarter consisted of work and study concerned with state legislation. To climax all the hard work, a spring picnic was held.

Colheconomists

Western's Colheconomists began the fall quarter with a fruitcake sale, and followed that with a journey to Pullman for the Washington State and British Columbia Colheconomist meeting. The club's two big projects for winter quarter were a dinner on campus with UBC and with the foreign students registered here, and the annual waffle supper, the profits going to the World Student Service fund.

There were approximately twenty members in the club this year. Joyce Downing was president and Pat Baxter, vice president.



Row 1: M. Frye, C. Mulford, N. Wardell, V. Schlagel, V. Vuylsteke, A. Bowman, M. Couplin. Row 2: D. Gay, J. Simon, R. Gray, C. Doherty, E. Ondracek, C. Sullivan, A. Nienaber, R. Smith, H. Tidball, W. Dralle, M. Dexter, A. Handeland, L. Olsen.

Row 1: P. Dick, Rev. Hallman, J. Orbeck, D. Borchers. Row 2: D. Ross, H. Lord, J. Warneke, J. Kephart, M. Ness, A. Brown, A. Chenier, B. Bell, C. Keene, B. Hudson, J. Young, W. Murphy. Row 3: H. Wilson, D. Smith, J. Carlson, C. Lund, Miss Booth, M. Bergan, M. Oelrich. Row 4: B. Melrose, B. Hoof, W. Haycox, L. Lallas, D. Wolf, J. Carlbom, D. Pippinger, D. Ward, R. Schermerhorn, G. Phister, G. Van Woudenberg, E. Grey, L. Friberg, G. Wolf.

PRESS CLUB

Several parties were among the social events of this year's Press club. Formation of a basketball team which was victorious in its encounter with the Lummi Indians was another of the club's activities.

Officers this year were: Clint Doherty, president; Roger Gray, vice president; and Colleen Sullivan, secretary-treasurer.

The purpose of the club is to bring together students interested in editing and writing jobs on campus.

USCF

The United Student Christian Foundation is devoted to the promotion of religious life among the students on an inter-denominational basis. It promotes Bible study, worship, group discussion, and service projects and is affiliated with the Bellingham Council of Churches as a project of the United Student Christian Council of the United States. The foundation maintains a center for religious and social activities, which is known as "The House," with a full time minister to students, The Rev. William E. Hallman.

Included among the activities for the year were weekly dinners and Bible study periods, roller skating parties at Ferndale, and after-game socials. Miss Mira Booth is the faculty adviser.

ARION CLUB

The organization for students interested in music is the Arion club. With the leadership of President Ken Tinkham and Dr. Frank D'Andrea, adviser, they played an important part in the educational and social activities of the music department.

Arion club members served as the hospitality committee during the Music Educations National conference held on campus in March, with 2500 delegates and performers present. Outstanding work was also done during the Northwest Washington Music Festival in which 1500 high school musicians participated.

VALKYRIE

Valkyrie club, led by Betty Grocott, president, has been active in many service and social functions this year. As a pep group they attend all games and usher at many affairs. Members are selected because of their leadership qualities and participation in service to the college.

The year's activities have included the sale of "Mums" and presentation of a skit for Homecoming. The annual picnic was held spring quarter.

Miss Enid Karsten and Miss Dorothy Ramsland were advisers this year.

First Row, left to right: D. Byers, M. Orbeck, N. McGinnis, F. Tinkham, M. Frye, C. Lamroueux, D. Oelrich, P. Lunde, B. Dale. Second Row: B. Byers, M. Gustafson, K. MacKenzie, S. Bassett, R. Ross, A. Bennett, D. Nugent, E. Konsa, M. Mallonee. Third Row: K. Tinkham, B. Castol, R. Krebs, W. Ellsworth, B. Nanney, J. Allen, F. Nielsen, L. Lunsford, T. Upington. Fourth Row: J. Hanson, R. Quinn, G. Perry, G. Magelssen, G. Oelrich, L. Wagness, A. Swanberg, N. Bergson, D. Dale.



First Row, left to right: P. Price, J. Gentry, J. Huyge, B. Dale, B. Foss. Second Row: N. Brown, M. Johnson, L. Sovde, B. Grocott, N. White, B. Hayes. Third Row: D. James, R. Goldade, C. Crook, M. Weber, B. Lange, N. Kamperman, A. Kohler. Fourth Row: Miss Ramsland, J. Brown, N. Roberts, V. Ulancich, M. Hall, L. Bergmann, A. Brown, L. Natrass, S. Fisher M. Smith, Miss Karsten.

I A CLUB

The Industrial Art club's main project for the year was reconditioning a 1940 Packard coupe to raise funds in order to send representatives to the Industrial Arts convention. The club also worked on a float for the centennial and performed I. A. demonstrations at the Inland Empire convention in Spokane. The club is affiliated with the American Industrial Art association.

SKI CLUB

Under the direction of Dr. Roloff the Ski club spent a busy and successful year. Fall quarter began with a steak fry at Lakewood and an overnight trip to Mount Baker. The club put a skiing display in the music building on club carnival night. Officers for the year were Neil Mullen, president; Curtis Noah, vice president; Martha McPherson, secretary; and Pete Newell, treasurer.

J. Honcoop, W. Kratz, H. Lagasse, L. Otten, J. Morgan, C. Hash, E. Angevine, R. Dickey, E. Callender, E. Moritz, S. Leathers, J. Maxfield, D. Wolf, D. Thornycroft, M. Freeman, R. Chapman, G. Greathouse



First Row: E. Lund, V. Hitch, C. Resner, J. Redmond, M. McPherson, V. Scott, D. McLane, J. Sinclair. Second Row: L. Jameson, M. Hancock, M. Hoyt, C. Lamoureux, M. Benjamin, P. Albrecht, L. Virkelyst, P. Sinclair. Third Row: N. Wardell, J. Walberg, E. Konsa, G. Sedell, K. McHargue, M. Hardie, K. Valentina, N. Mullen. Fourth Row: R. Ross, A. Swanberg, P. Newell, B. Porter. Fifth Row: H. Tidball, D. Agnew, B. Solberg, B. Gallan, J. Jorgenson, D. Jangard, G. Rector. Sixth Row: D. Huber, J. Tudor, J. Bonamy, L. Botsford, G. Stenman, N. Curtis. Last Row: Dr. Roloff, A. McConnell, P. Gibson, B. Kerns, G. McPherson, P. Van Zanter, O. Lecompte, J. Spike, J. Howgate.



COLLEGE BAND

The Viking band, under the direction of Don Walter, was on hand for the College pep assembly and football game which marked the beginning of the school year. In November of fall quarter the band gave a Thanksgiving concert. Again they presented a Christmas concert for the enjoyment of the college students, faculty, and townspeople.

The annual band tour was taken winter quarter during the first week of March. The band travelled as far east as Wenatchee and along the coast to Aberdeen. Seventy-five members took part in the tour. On their return the band presented the annual winter concert, enjoyed by many Bellingham citizens.

For many years Western's band has been chosen as official host hand for the Blossom Time festival and so it was not surprising that they were chosen as official host band for Bellingham's Centennial celebration this year.

The Viking band was chosen as official band for Armed Forces Day at Whidbey Naval Air Station, May 16. The last big engagement of the year was the Rhododendron festival at Port Townsend.

COLLEGE CHOIR

The choir this year consisted of 135 members during the three quarters of the 1952-1953 school year. Under the direction of Bernard Regier, the group gave many performances on campus, in the community, and throughout the state.

During the first week of November the choral group sang for the annual Parents' Day program. In the latter part of the same month, they were heard on KPUG.

A beautiful Christmas concert was given for the enjoyment of the students of Western and the townspeople. February found the choir performing again for the High School Leaders' Conference.

The Northwest Music Educators Conference was held on the WWC campus this year, with the blue and white robed choir supplying some of the choral music.

The annual choir tour was held spring quarter this year, when seventy members presented programs in high schools for several consecutive days, and at KOMO radio station in Seattle, April 19. After the tour the choir members turned to work on the opera "Martha," jointly sponsored by the departments of music and drama. Their final performance for the year was for the Baccalaureate service and for Commencement.



Row 1: H. Thomas, S. Davis, J. Kimple, P. Bennett, J. Baily, M. Winterhouse. Row 2: E. Rhodes, M. Estes, S. Gadwa, P. Anderson, J. Lacy, B. Carbonatto, I. Sheehan, J. Anderton, T. Raymond, J. O'Sammon. Row 3: I. Usitalo, I. Raines, M. Kratz, F. Lunsford, J. Galletly, D. Vik, N. Stewart, S. Estle.



Row 1: E. Sande, D. Campbell, J. Willet, C. Campbell, R. Connely, C. Campbell, D. Wallace, C. Marcoe. Row 2: Miss Patricia Hieber (adviser), Mr. Bergan, J. Cornell, A. Chenier, J. Redmond, W. Orbeck.

STUDENT WIVES

With an average attendance of 35, the student wives' group has been active this year. Included among their activities was the sale of Pow-wow dolls during homecoming.

Each quarter a social was held to which the husbands were invited. This year the banquet held in Edens hall was enjoyed by a large group of students and their wives.

SQUARE AND CIRCLE

The Square and Circle club began the 1952-1953 year with sixteen members who met every second and fourth Monday night in Rec Hall to form and practice new and old square dances. The club worked and presented a dance exhibition for the enjoyment of faculty, students and townspeople at the Christmas program. Officers for the year were president, John Willet; vice president, Earl Sande; secretary, Gerty Strauss; treasurer, George Lanphear.



PEP STAFF—Dr. Pawelek, J. Young, P. Price, F. Jackson, L. Bergmann, L. Westman, D. Wallace. Front row: S. Gimurtu, B. Woods, L. Lindberg, D. Folk, M. Gochmour, C. Obermueller, D. Hodgson.

SONG LEADERS—D. Folk, M. Gochmour, C. Obermueller.



YELL LEADERS—B. Woods, G. Gaupp, L. Lindberg, D. Hodgson, S. Gimurtu.

PEP STAFF . . . YELL AND SONG LEADERS

The pep leaders for Western this year consisted of three song leaders and six yell leaders. They rightly earned their titles by attending every game and giving their all to raise the cheers needed to help the teams achieve victories. Their

fine example is one that pep squads in the future may look back to as high standard of service to the college. To them we offer our thanks and congratulations for keeping the school spirit alive.





Men's Quartet—W. Ellsworth, P. Dodsworth, B. Young, C. Campbell



String Quartet—A. Batty, D. Nugent, M. Gustafson, S. Palmer

Opposite page—Upper Picture: B. Hatfield, G. Perry, C. Peters, D. Leslie. Lower Picture: Dean, D. Daverin, R. Moffit, S. Basset, M. Cary, J. Crook, M. Burchett, A. Batty.



C. Sullivan, M. Seelye, J. Simon, D. Gay, R. Smith, R. Gray, R. Camfield, C. Mulford

THE COLLEGIAN

Heading the weekly Collegian for 1953 was Elaine Daverin Ondracek, no newcomer to student publications. Elaine reported all her freshman year, was the Collegian business manager as a sophomore, and rose to the top position in her third year. Mrs. Ruth Burnet was student publications adviser.

Loretta Olson and Mildred Seelye were the 1953 business managers. Ruth Smith was copy editor for the three quarters. Other responsible jobs were held by Clint Doherty, Dave Gay, Jim Simon, Roger Grovdahl, John Ricketts, Carol Mulford, Colleen Sullivan, Arlene McKinney, and Maryann Dexter.

Capable contributors for shorter periods were Marion Baldwin, Warren Coffelt, Maureen Couplin, Roger Gray, Mark Hardie, Wil Knutsen, E. S. Laird, Gerry McCormick, Win Pearson, Dick Stark and John Willet.

A highlight of the year was the return to the eight page tabloid-size Collegian instead of the four pages of 1952. Activities were climaxed by the traditional spring Publications banquet.



D. Gay, C. Doherty, J. Ricketts, R. Grovdahl, B. Henton, D. Stark, M. Seelye, C. Mulford, M. McKinney, E. Ondracek, editor.



V. Vuylsteke, N. Wardell, V. Schlagel, A. Bowman.

PROFILE

Another "first" was produced by the '52-'53 Profile. This year the practice of utilizing coupons for obtaining the winter and spring quarter supplements was initiated.

The current student directory was edited by Clint Doherty.

KLIPSUN

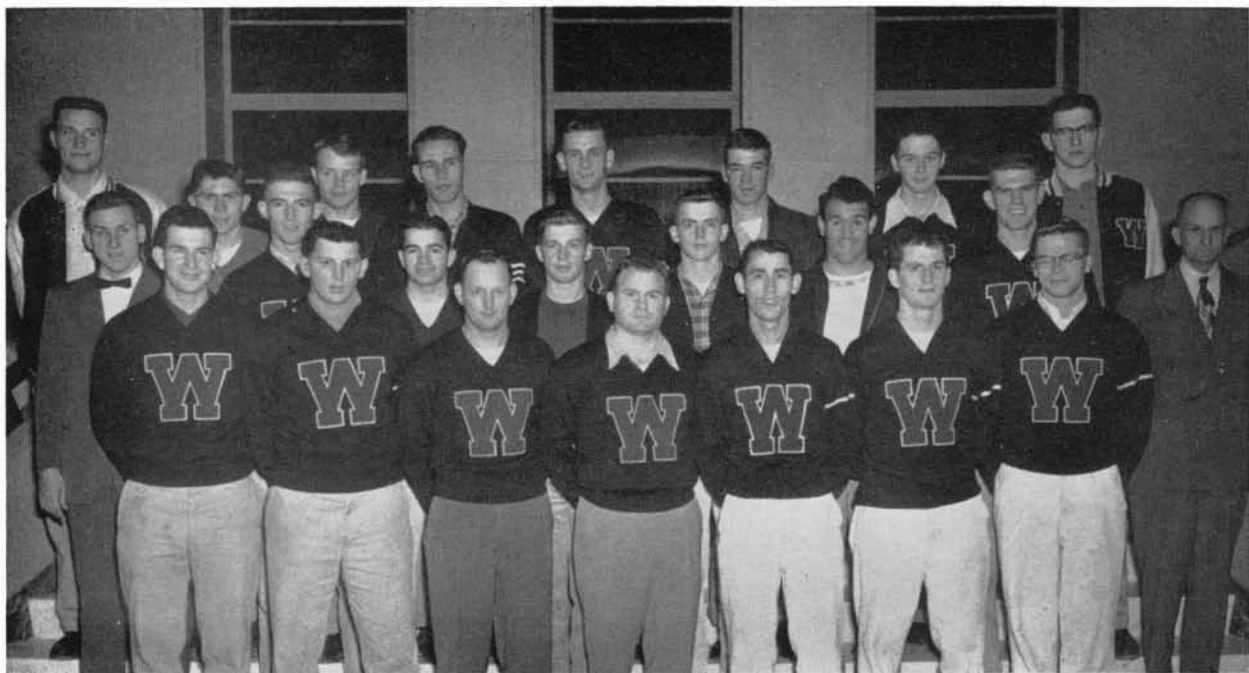
Audrey Adams Bowman headed the Klipsun staff for 1953. As business manager, Dona Isaacs was her assistant. James Stewart and Ron Camfield were responsible for the student photography.

Staff members at different times during the year were Clint Doherty and Jim Simon, copy readers, and Arlene Nienaber, Viola Schlagel, Nancy Wardell, and Virginia Vuylsteke on general assignment.

MINOR PUBLICATIONS

Responsible for the three minor student publications this year were Joyce Hutchison, 1953 Navigator, the student handbook; Clint Doherty, Profile, the campus directory; and Galen Freeberg and Dona Isaacs, Homecoming booklet, the Big Game program.

Gerry McCormick and Roger Grovdahl made a good start with Western Roundup, a series of information booklets on sports and players of each current season.



Row 1: H. Burger, C. Hash, D. Andrus, J. Anderson, P. Muir, K. German, Carver. Row 2: Ciszek, D. Jones, B. Bright, J. Hanson, B. Davis, D. Pangallo, K. Swalwell, R. Woodman. Row 3: B. Hansen, G. Reimer, L. Padgett, M. Peterson, C. Lindberg, R. Harrison, J. Swan.

W CLUB

The W club consists of most of Western's athletes and includes some from each and every sport. Sam Carver and Ray Ciszek are the club advisers. The social activities this year were the smoker held in the college gym and the annual banquet, held this year at Brownie's Cedar Chest.

W R A

A trip to scenic Diablo dam was first on the fall quarter agenda for the WRA girls. Thirty girls signed up for the trip. A membership drive was sponsored during which the club succeeded in signing up one hundred members.

Winter quarter the WRA sponsored the annual carnival. Business for the year was completed with a weekend spent at Sinclair Island.



Row 1: M. Bailey, M. Cole, P. Baxter, J. Olsen, C. Federico, M. Rankin, J. Gloman, M. Ahues, J. Kephart, C. Resner, N. Silliman, J. Huyge, V. Schlagel, A. Granger, T. Oliver, M. Oelrich, L. Nattress, J. Reinholt.
 Row 2: U. Plancich, W. Shannon, J. Clark, P. Hackett, B. McDonald, M. Baldwin, M. Ness, C. Mulford, S. McMicken, B. Moe, K. Mallahan, R. Norman, C. Johnson, D. Mountjoy, L. Bonney.
 Row 3: M. Wilson, J. Hurlbut, D. Scribner, L. Stibre, D. Stevenson, B. Campbell.
 Row 4: D. Nugent, M. Hoyt, N. Wardell, L. Romer, B. Manely, D. Clark, M. Hancock, M. Oliver, S. Nelson.



Top left—Mixed rec volleyball
Center left—A bowling class in action

Top right—The starting splash
Bottom right—Intramural baseball

Bottom left—Ping pong session

Season's Record Football

OPPONENT		WWCE
Pacific U.	9	7
CPS	6	13
PLC	7	7
UBC	0	50
Whitworth	20	14
Central	0	34
Eastern	0	19
UBC	0	51

Conference games—Western had one tie and one loss.

Total for, 195

Total against, 42.

FOOTBALL

The Vikings started the 1952-1953 season with a game against Pacific University, one of the finest opponents and champion in the Northwest league: Pacific U. won it with a score of 9-7.

On offense, the Western team used eight different formations, which is possible on the "straight line" philosophy. Coaches Charles Lappenbusch and Ray Cizek commended the team on their excellent defense, which held the opponents to 42 points, and on the Viking offense which gained 195 points for Western.

BASKETBALL

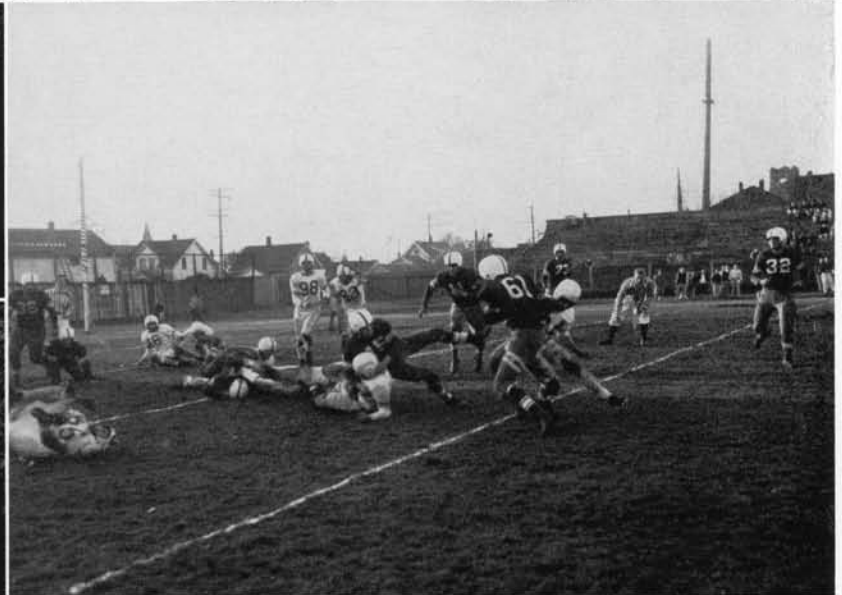
Western's blue and white varsity squad stacked up 672 points to come just slightly under the combined 729 points of their opponents.

In non-conference games the team had a record of 11 wins and 3 losses, with combined total points standing at 793 for Bill McDonald's Vikings and 743 for their opponents.

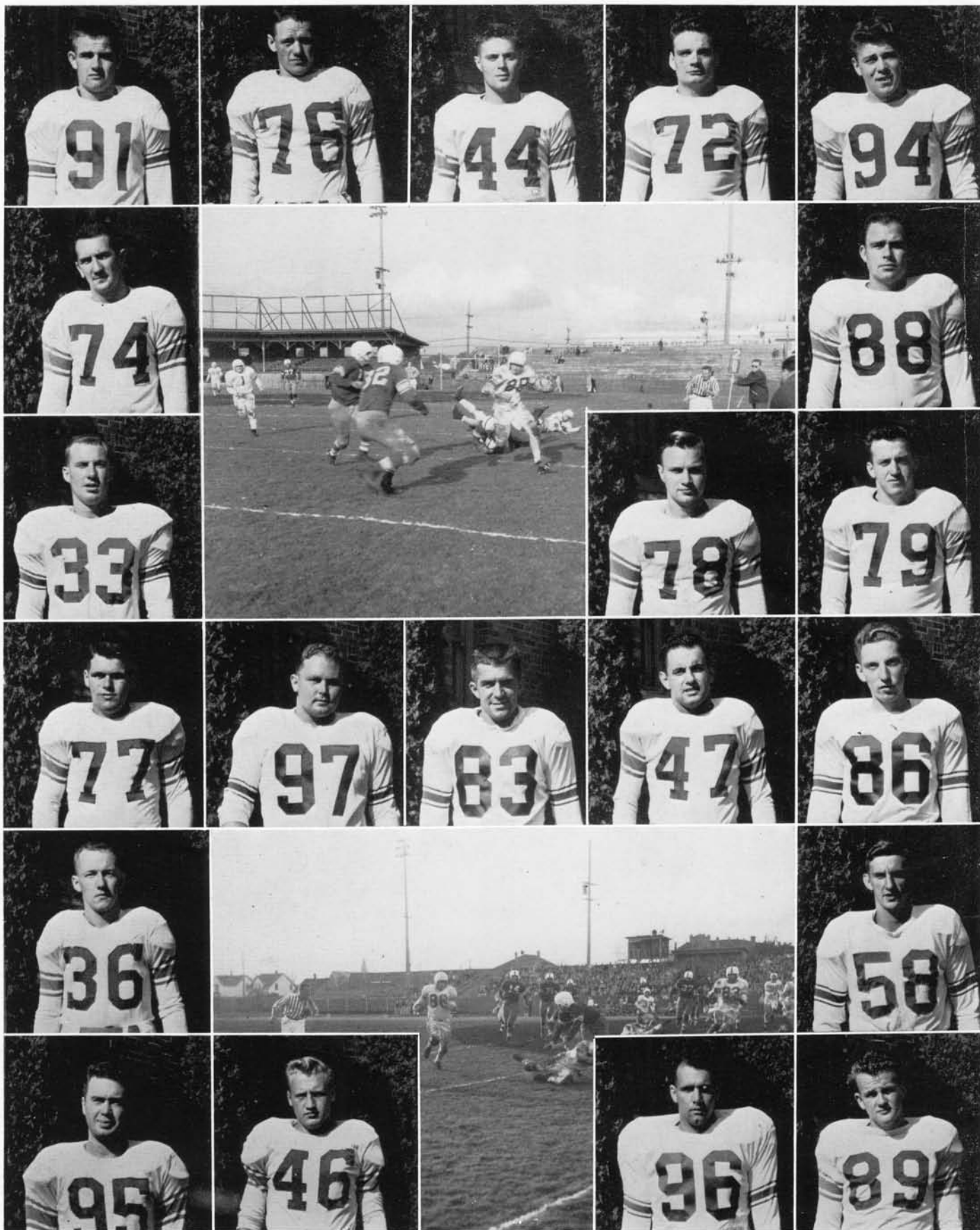
There were three graduating seniors on this year's 1952-1953 squad, Jack Anderson, Bob Woodman, and Bob Hansen. Western will feel their loss in future games.



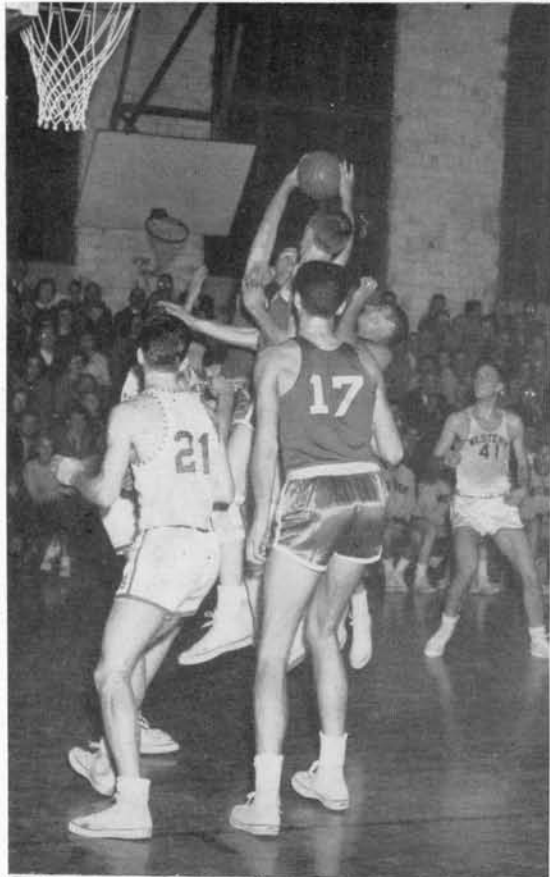
Football Coaches—Ray Cizek, Charles Lappenbusch



Row 1: D. Andrus, T. Rassley, R. Markishtum, D. Jangard, M. Bogdanovich. Row 2: P. Muir, N. Richardson. Row 3: J. Gard, K. Swalwell. Row 4: F. Conger, H. Burger, J. Smithers, L. Padgett, J. Mariotti. Row 5: B. Hood, K. Cabe. Row 6: D. Hegre, G. Greathouse.



Row 1: P. Lang, D. Anderson, R. Hansen, D. Mansur, A. Lee. Row 2: B. Short, D. Walley. Row 3: L. Lowery, D. Moen, G. Bankus. Row 4: S. Bliss, A. Cornett, T. Fones, J. Maston, J. Sheenan. Row 5: Solberg, B. Karwacki. Row 6: B. Feagan, B. White, D. Pangallo, L. Farnell.



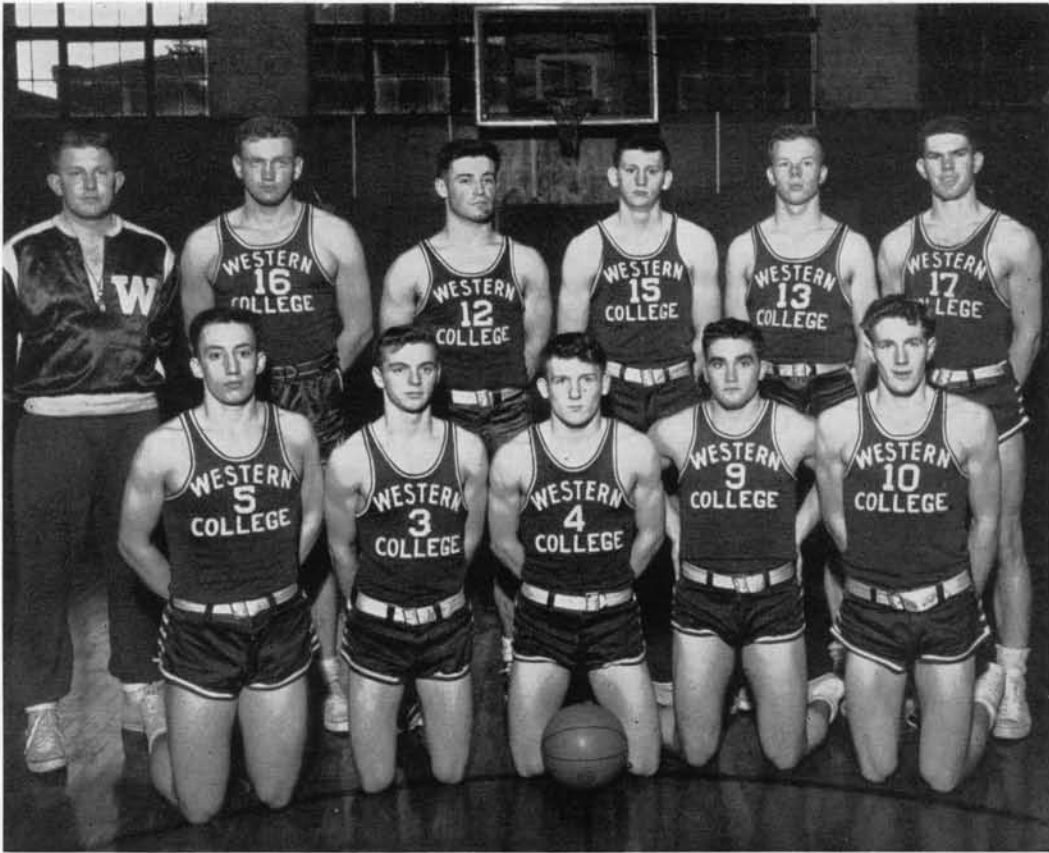
Basketball games, complete with pep band, yell leaders, and a capacity audience



Row 1: B. Hansen, C. Lindberg, B. Woodman, B. Stone
 Row 2: J. Anderson, G. Dacus, B. Petrosik, C. Reimer
 Row 3: J. Chamberlain, P. Buday, Coach McDonald, L. Padgett



Row 1: Coach McDonald, B. Woodman, G. Dacus, J. Chamberlain, B. Hansen.
 Row 2: B. Petrosik, J. Anderson, P. Buday, C. Reimer, B. Stone.



Row 1: Coach Starr, West, Lee, Burger, Olson, Swalwell
 Row 2: Hoisington, Lunsford, Carlson, J. Sager, T. Bell



Jerry Starr

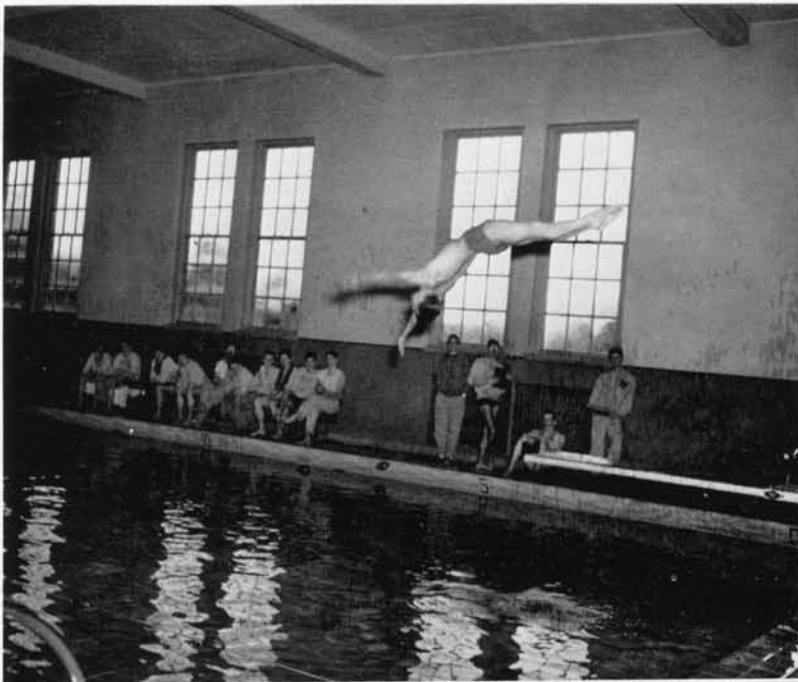
JV BASKETBALL

Top scorer for this year's JV basketball team was Fred West. This Enumclaw sharp-shooter led the team through a successful season.

Besides playing the regular round of games, the JV's also met with independent teams and junior colleges.

Under the capable coaching of Jerry Starr, the game of the year proved to be against UBC.

The purpose of the Junior Varsity is to find and develop varsity material and to give more men a chance to compete on the basketball floor.

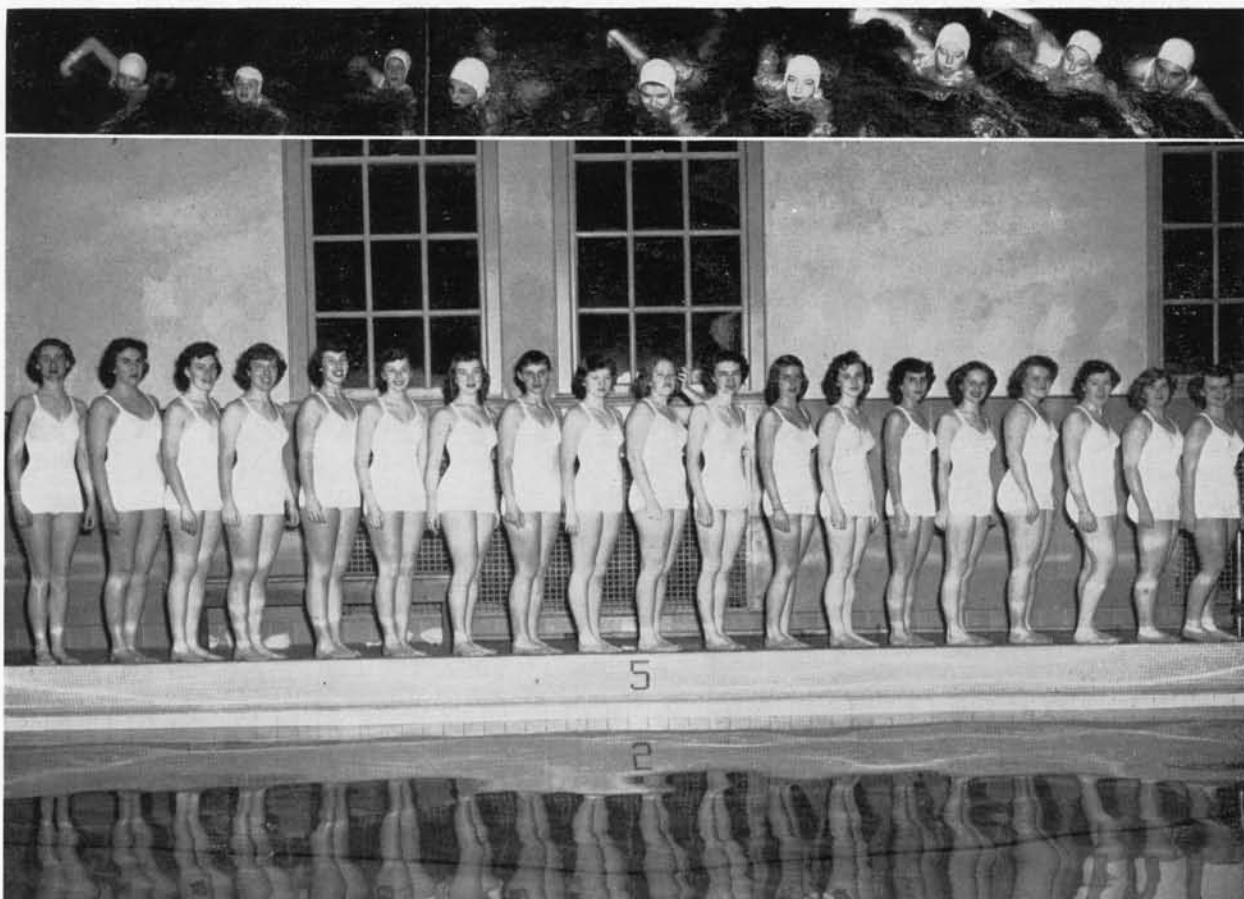


Coach Ilo Sande, Barry Davis, Dick Mealy, Ken German, Gerry Royal, Dick Krull, Don Daverin, Dennis Duncan, Bill Aho, Ivan Hickenbottom, Allen Swanberg, George Hansen, Dennis Carlsen

Divers—Hickenbottom, Aho

SWIMMING TEAM

The 1952-1953 year marked the second season that Western's swimming team has been a member of the Evergreen Conference. Coach Sande can well be proud of his swimmers because this year they walked away with the conference championship. The co-captains for the team were Dick Mealy and Barry Davis.



Top Picture: Swimming in unison.

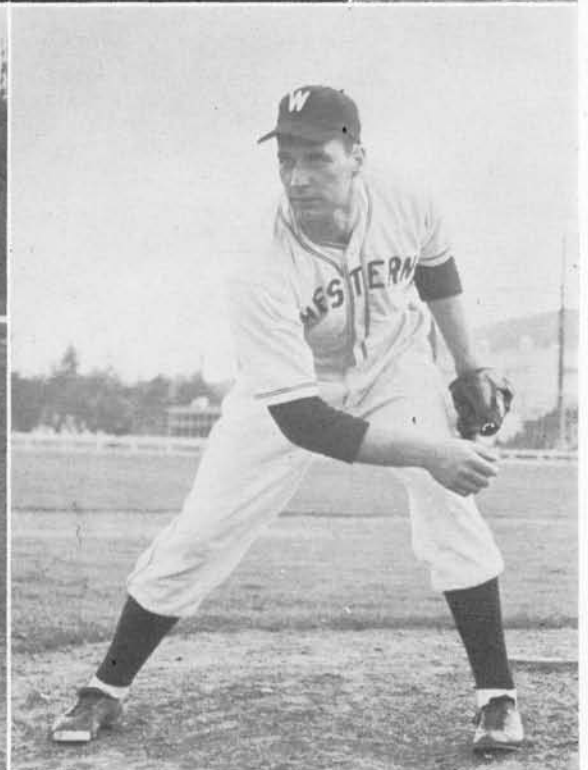
Nancy Roberts, Carolyn Knowles, Joyce Penner, Pat Gibson, Kathi Reardon, Loretta Stibre, Lorrene Bergmann, Nancy Trafton, Mary Jones, Janice Carlbom, Elaine Ondracek, Susan Knox, Dorothy Eyres, Lois Chudek, Grey Tozier, Beverly Manely, JoAnn Gloman, Shirley McMicken, Kathy Hanson.

Bottom, left: A waterwheel.

Bottom, right: A synchronized float.

BLUE BARNACLES

Blue Barnacles swimming club consisted of twenty of Western's mermaids this year. They were directed by Miss Margaret Aiken. The girls have met in the college pool every Monday night throughout the school year to practice various strokes and synchronized swimming. They presented a water ballet for public enjoyment spring quarter.

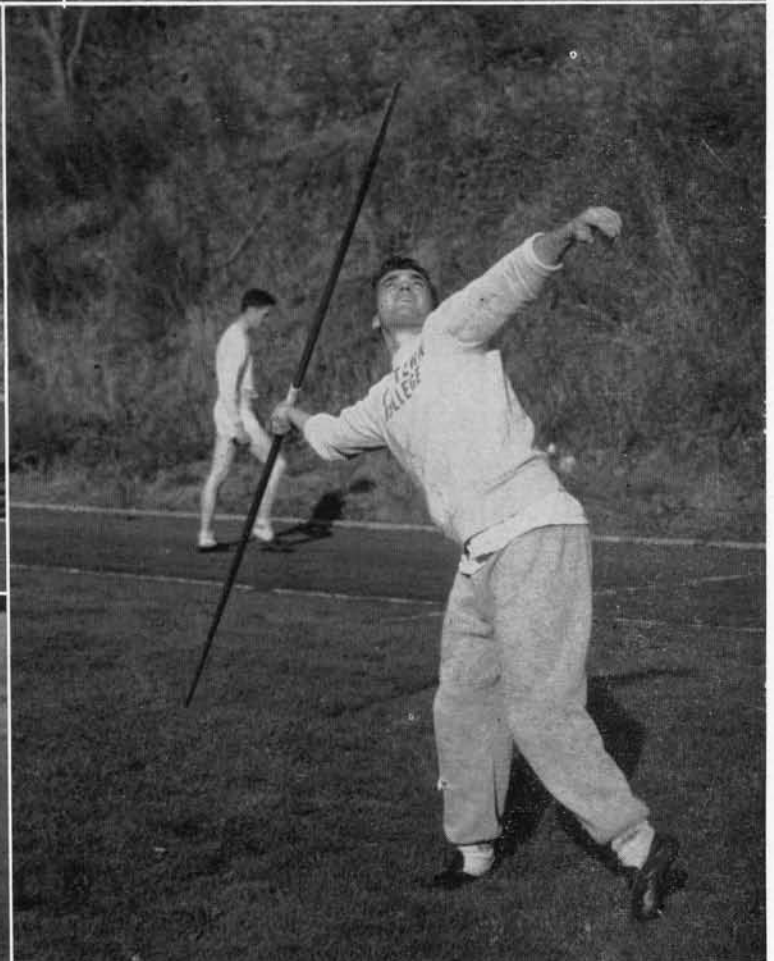


Top, left: Row 1—Burger, Padgett, Evans, Lindberg, Hansen, Swalwell, Thomas. Row 2—Martin (coach), Newell, Reimer, Hanse, Gard, McGlothorn, Burger. Top, right: Ken Swalwell. Bottom, left: H. Burger, C. Lindberg. Bottom, right: Bob Hansen.

The baseball team is coached by Joe Martin, who also manages the Bellingham Bells, the local semi-pro team. Under his coaching, the 1952 nine met with an outstanding season. According to Coach Martin, as good a record is expected this year, providing the pitching holds up.

The pitching chores at the beginning of the 1953 season were handled by Spud Walley and Bob Hansen.

The team is a member of the Evergreen Conference, which includes UBC, CPS, and PLC on the west side. The west side then plays the east side for the championship.



Top, left: Row 1—Erlandson, Kerr, Garret, Swalwell. Row 2—Galloway, Muir, Carlson, Marcoe, Ciszek (coach). Row 3—Swan, Peterson, Burges, Whan, Kays. Top, right: Jack Bowman. Center, left: Whan, Muir, Swan. Bottom, left: Frese. Bottom, center: Burges. Bottom, right: Sager.

Under the able coaching of Ray Ciszek, the 1953 track team was one of the best. Even with the loss of eight men, this year's team proved to be better, all around, than that of last year. Four important team members were back. They were Jerry Swan, and Ken Swalwell, New Westminster, B. C., Modris Peterson, Seattle, and Fred West, Enumclaw.

Swalwell, a sophomore, ran the mile and two-mile. Last year he took sixth place in the 1000 yard run at the NAIA meet at Abilene, Texas.

Swalwell competes in the shot put and the discus. He made a new discus record of 139' 6" over the former one set in 1950 by Jeff Russell of 134' 7".

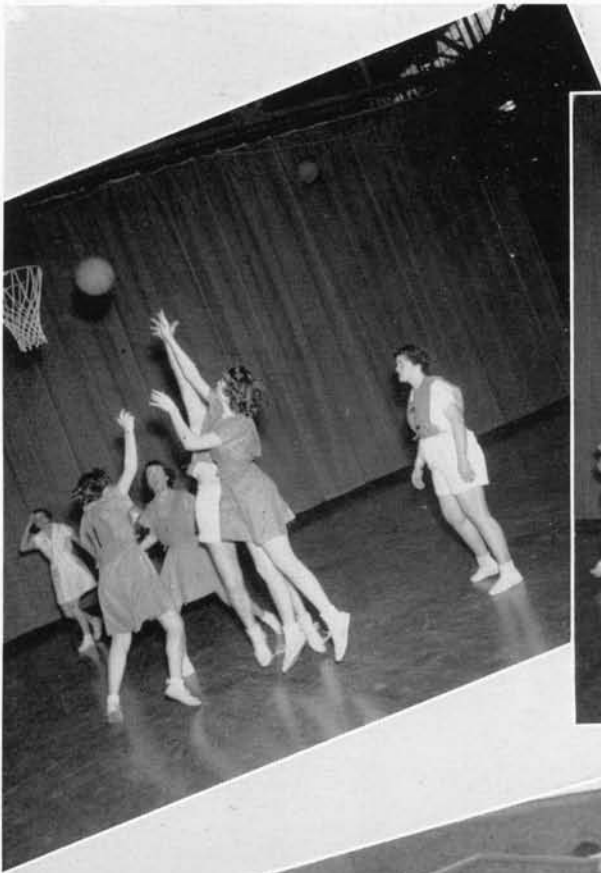


Left to right: Bob Doyle, Fred Carbonatto, Ben Doyle, Sam Carver, Gene Park, Roger Stearns, Earl Peterson.

GOLF

The golf team this year had three returning lettermen: Fred Carbonatto, Roger Stearns, and Eugene Park. These experts, plus the host of new hopefuls, including Bob Doyle, Bennie Doyle, Ron Cauffman, Jack Spadler, Dave Merner, and Earl Petersen, comprised Western's 1953 golf team. Their opponents were the Evergreen Conference colleges plus Seattle University and Seattle Pacific. They played a full schedule from the middle of April to the middle of May and practiced at the Country Club in their spare time.

To the players who represented Western so well in a sport that brings comparatively little glory we say, "A job well done boys. Keep it up!"



Top left: Intramural basketball game
Lower left: Pat Baxter and Wilma Shannon
Top right: Two more points!
Lower right: Looking over the skiing equipment

Index to 1953 Klipsun and Names of Students Not Pictured

A		
Aagard, Kenneth	38	
Aandahl, Elliot	49, 59	
Aanes, Leo		
Aarstad, Neva	19	
Abernethy, Annette	34, 62, 64	
Abrahamson, Norman		
Aho, William	61, 86	
Adolphson, Fred		
Agnew, David	30	
Agnew, Sam		
Ahues, Minnie	30, 62	
Albers, Mary	30, 64	
Albrecht, John		
Albrecht, Phyllis	19, 64	
Aldrich, George		
Aldrich, James	38	
Alexander, Helen		
Alger, Dale	38	
Allen, James		
Allen, John		
Almasi, Terry	62	
Almquist, William		
Alvord, Irving		
Alvord, Mary	38	
Amundsen, George	59	
Anderson, David		
Anderson, Don	82	
Anderson, Neil		
Anderson, Jack	84	
Anderson, James		
Anderson, Jerry		
Anderson, Lloyd		
Anderson, Ruth		
Anderton, Willis	30	
Andrews, Peggy	30	
Andrus, Dwight	81	
Angevine, Edwin	19, 59, 60	
Arentzen, Frederick		
Armstrong, Marlene	38	
Asher, Dolores		
Atwood, Warren	38	
Aukland, Charles		
B		
Bailey, Edward	19	
Bailey, Mary Ann	59, 64	
Baird, Alberta		
Baird, Ralph		
Baker, Frank		
Baker, Nancy		
Baker, Norma		
Balch, Grace		
Baldwin, Marion	59	
Ball, Robert		
Bannerman, Lois		
Bannister, Herbert		
Basset, S.	63	
Barbo, Sally		
Barkus, Gary	82	
Barnhill, David		
Barr, Roger		
Barron, L.	64	
Barton, Dee		
Bartow, Helen	19	
Bartruff, Jeanette	34	
Bassett, Shirley		
Batdorf, Carl		
Batthey, Anne	19, 59	
Baxter, Patricia	30, 62, 64	
Baxter, Robert		
Beatty Danny		
Beck, Frank	38	
Beeston, Leslie	30, 59	
Bell, Bessie	34, 65	
Bell, Roger		
Bell, Tom	85	
Benjamin, Marie	34	
Bennett, Alice	38	
Bennett, Ralph		
Benson, Leonard		
Benson, Richard		
Berg, John		
Bergan, Mercia	34, 65, 70	
Bergeson, Neil	30	
Bergmann, Lorrene	33, 34, 71, 87	
Berry, Jack	34	
Berry, Richard	19, 64	
Best, Poss		
Bitney, Shirlee		
Bitterman, Wayne		
Bjerke, Gordie		
Blair, Wesley	19	
Blakely, Robert		
Bliss, James		
Boettcher, James		
Bogdanovich, Marion	81	
Bollman, Robert		
Bolton, G.	59	
Bonamy, Jacqueline		
Bonino, Elia		
Bonner, Bonnie	38	
Bonney, Lyla		
Borchers, Donald	30, 65	
Borjesson, Jean		
Borrett, Don		
Botsford, Louie	38	
Boulton, Gwenth	38	
Bovee, Clifford		
Bowes, Robert		
Bowman, Audrey	65, 75	
Bowman, Jack	89	
Bowman, Robert		
Boysen, Delmer		
Brackinreed, Kenneth		
Brandner, Crosby		
Brandt, Jean		
Branick, Virginia	38	
Brann, Norman		
Brannian, William		
Bravender, Eleanor	38	
Bright, Bill	34	
Brock, Richard		
Bruland, Gerald		
Broomall, Sarah	63	
Brown, Arlayne	59, 65	
Brown, Berniece		
Brown, Clyde		
Brown, E. E.	38	
Brown, Joan	19, 59, 62	
Brown, Nancy	19, 59, 69	
Brown, Stella		
Brown, Troyce		
Brownrigg, Richard	38	
Bryant, Leslie	38	
Buday, Paul	84	
Budd, Doris		
Buerstatte, Margaret		
Buhtz, Alice	30	
Burchetti, Thomas	59	
Burchett, Edna	34, 59, 64	
Burger, Harvey	81	
Burger, Robert	34	
Burges, Marylou		
Burgess, Donald		
Burmester, Carl		
Burnell, Charles		
Butler, Charles	38	
Byres, Barbara	38	
Byres, Doris	30	
C		
Cabe, Keith	81	
Callahan, Mary	30	
Callender, Ernest		
Cameron, Stephen		
Camfield, Ronald	34, 59, 63, 64	
Campbell, Beverly	38	
Campbell, Charles	34, 70	
Campbell, Clare	70, 19	
Campbell, Dale	30, 70	
Campbell, Rodney		
Carbonatto, Fred	19	
Carlbom, Janice	38, 65, 87	
Carlsen, Dennis	86	
Carlson, Elizabeth	38	
Carlson, Eva		
Carlson, John	64, 65, 85	
Carlson, Thelma		
Carlson, Wayne	38	
Carpenter, Gertrude	38	
Carson, Eugene		
Carter, Rose		
Carver, Barbara	34	
Cary, Maurice	59, 63	
Cass, Ramona	38	
Casto, Robert		
Catron, Stanley		
Caufman, Ron		
Cavalli, Helen		
Chamberlain, James		
Champion, Nancy		
Chandler, Julia		
Chandler, Martin	38, 63	
Chapman, Guy		
Chapman, Raymond	19	
Chenier, Alice	65, 70	
Chenier, Walter	30	
Chudek, Lois	38, 87	
Clark, Elizabeth	30	
Clark, J.	38, 59	
Clark, Richard		
Clarke, Verna	34, 59	
Clay, Shirley		
Clendenen, David		
Coates, Fred		
Coffelt Warren	59	
Cohrs, Ray	33, 64	
Cole, George		
Cole, Marie	62	
Cole, Margaret		
Collyer, William	30, 58, 59	
Compton, Allen		
Compton, Ethelyn		
Coger, Frank	81	
Connelly, Ralph	70	
Cooper, Dona	64	
Cornell, Jo Ann	52, 64, 70	
Cornett, Allan	82	
Coskey, Roland		
Couplin, Maureen	38, 65	
Creel, John		
Crisp, Hugh		
Crook, Carolyn	49, 59	
Crook, Judith	38, 59, 63	
Croghan, Jack		
Curry, Sister M. D.		
Curtis, Robert		
D		
Dacus, Gaylon	84	
Dahl, Audrey		
Dahl, Forrest		
Dahl, Myrna	38	
Dahlgren, Betty	59	
Daines, Virginia	30, 62	
Dale Bernice		
Dale, Bonnie	58	
Dale, Richard		
Dalton, Patricia		
Daniels, Irma	38	
Daverin, Donald	38, 86	
David, Megan		
Davis, Alice Jean		
Davis, Barry	34, 86	
Davis, John		
Daws, Bill		
Daws, E. A.		
Day, Charlotte		
Dayton, Roland		
Dean, Bob		
DeAtley, Mary	64	
Deckebach, Carolyn		
DeHoog, William		
DeKoster, Roland		
DeLancey, William		
DeMers, Harry		
Deniston, Douglas	59	
Dennis, Charles		
Dexter, Maryann	38, 65	
Diamond, Donna		

Index to 1953 Klipsun and Names of Students Not Pictured

Dick, Peggy	34, 65	Fones, Truman		Gray, Eugenia	34, 65
Dickau, Clifford		Forbes, Ruth	36	Gray, Roger	22, 54, 61
Dickey, Robert	59	Ford, Myrtle	38	Greathouse, Glenn	81
Dickinson, Charles		Forsell, Paul		Green, Richard	
Dickinson, Dolores	59, 64	Forslof, Duane		Green, Virginia	
Dickson, John		Foss, Betty	59	Greenleaf, Belle	22
Diimmel, Lucille		Fotheringham, John		Greenough, Alice	
Dimick, Olga		Fowles, Morgan		Gregor, Alton	30
Dimick, Ruthanne		Fralich, Naoma	38	Greiner, William	
Dixon, Jonna		Franks, Fannie		Gresli, Marilyn	
Dixon, Robert		Francisco, Clyde		Grocott, Betty	58
Dodson, Karen		Franson, William		Grovdahl, Roger	
Dodson, Orran		Franulcovich, Paul		Gudbranson, Bruce	38
Dodsworth, Paul	58	Frazier, Lynn	38	Gudmundson, Magnus	22
Dodsworth, Gerry	58	Frederickson, Monica	30	Gunderson, Vivian	
Doherty, Clinton	65	Freeberg, Carlin	30	Guntner, Franklin	38
Donald, James		Freeberg, Erling		Guthrie, Dick	30
Donnelly, Barbara	64	Freeberg, Galen		Gustafson, Maureen	38
Donovan, Carol	34	Freeman, Lois			
Douglas, Raymond		Freeman, Merlin			
Dowd, Harold		Frese, Maren			
Downing, Joyce	30, 62, 64	Friberg, Lorraine	30, 59, 63, 65		
Doyle, Bennie		Friese, George			
Doyle, Bob		Fritzberg, James			
Dudley, Eleanor	34	Frye, Mary Lou	38, 53, 65		
Duncan, Dennis	86	Fyfe, Charlene			
Duncan, Lorraine	34, 59	Funk, Robert			
Dunham, Gwinn	34				
Dustin, Beverly					
Drake, Clancy					
Dralle, Wayne	38, 65				
Draper, Bob					
Driver, Mildred					
Dybdahl, Melvin					
Dye, Richard					
E		G		H	
Eacrett, M. L.		Gabrielson, Gordon	38	Haan, Janet	38
Easter, James		Gadwa, Francis		Hachman, Dolores	
Edin, Donna	38	Gallagher, Paula		Hackett, Patricia	62
Eastwood, Glenn		Gallant, Carole		Haffner, Allie	
Edmisten, Sharon		Gallant, Harvey	34	Hagglund, Joanne	
Elkins, Alina		Gallant, Jean		Halberg, Dorothy	
Elliott, Ann		Galletly, James	64	Hall, Marilyn	59
Elliott, Dale		Galloway, George		Hall, Ronald	38
Ellin, Kenneth		Garber, Kenneth		Hammastem, Jean	
Ellsworth, Ward		Garcia, Ann		Hancock, Marrienne	30
Elsberry, F.	38, 63	Gard, Jim	81	Handeland, Alma	65
Elsbree, John		Garrett, Maralyn	38	Hankins, John	
Endicott, Rex		Garrett, Peter		Hanna, Maurice	
Endrizzi, Ed		Gasparini, Ernie		Hanowell, Robert	38
Enga, Paul	63	Gates, Ernest		Hansen, Mary	
Engdahl, Jeanne		Gates, Robert		Hansen, Robert	82
Erdman, Claretta		Gaupp, Gloria	49	Hansen, Robert	84
Erickson, Robert		Gay, David	54, 65	Hanson, Dorothy	
Erlandson, John		Gentyr, Janice		Hanson, Duane	
Estergreen, Dale	38	Gerard, Donald		Hanson, George	34, 86
Estes, Charles		German, Kenneth	22, 59, 86	Hanson, Kathryn	87
Estle, Paul		German, Maribeth		Harden, Donald	
Evens, Allen	34	Giarde, Beverly		Harden, Mark	22, 58, 64
Evans, Darrell		Gibbons, Esther		Harding, Lenaa	
Evans, Mervyn		Gibbs, John	22	Hardy, Dolores	22
Evans, Phyllis	30	Gibson, Norma		Hardy, Jerald	
Eyres, Dorothy	87	Gibson, Patricia	62	Hargreaves, Terrence	
		Gibson, Timothy		Harmala, Ralph	
		Giger, Robert	38	Harrison, Ron	
		Gilman, William	38	Hartough, Dan	
		Gimurtu, Steve	38, 71	Harvey, Leota	31
		Ginder, John		Hash, Carl (Cliff)	
		Gislason, Donna		Hatfield, Joseph	
		Gladwin, Renee	63	Haug, Frain	31
		Glanz, Martha	22, 62	Haugh, John	
		Gloman, JoAnn	22, 62, 87	Hawn, Barbara	
		Gochnour, (Maurine)	71	Hawn, Jere	
		Goheen, Milton		Hayes, Ruth	
		Goldade, Rita	30	Hazlett, Barbara	33, 34
		Gollan, Beverly	34	Haycox, William	31, 65
		Gordon, Faye		Hayward, Georgie	31
		Gordon, Robert		Heald, Anthen	
		Gordon, Sharon		Heath, Herbart	
		Gouley, Nancyanne		Heathers, Perry	
		Gowrley, Dick	22	Hegre, Poal	81
		Gralener, Gladys	38	Henry, Lois	
		Grace, Lucille	38, 64	Henton, Barbara	
		Gragg, (June)	38	Herl, Kenneth	
		Graham, Charla		Hergert, John	22, 59
		Graham, Harry	38	Herrick, Jack	
		Granger, Ardith	38	Hewitt, Dorothy	31
		Granger, Charles		Hickenbottom, Ivan	53
		Grant, Jeannette		Hickey, Howard	
		Gray, Beverly	34	Hill, Tom	31, 59
				Hitch, Virginia	38
				Hilton, Louis	
				Hinkle, Charles	
				Hodgson, Don	71
				Hodgson, James	38
				Hoff, M.	63
				Hoff, Raymond	
				Hoffeditz, Marilynn	
				Hogan, James	

Index to 1953 Klipsun and Names of Students Not Pictured

Hoggins, Dale	31
Holden, Richard	
Holland, Chivous	
Holland, Jack	
Holmlund, Carl	
Holmstrom, Mary	
Holstead, Jack	
Honcoop, Jim	34
Hood, Clayton	
Hoof, Bruce	22, 65
Hook, David	
Houghton, Meech	34
Hovde, John	
Howard, Barbara	34
Howard, Ray	
Howatson, Donna	
Howe, Henry	59
Howgate, John	
Hovik, Elmer	
Hovik, Shirley	34, 62
Hoyt, MaryAnn	31, 62
Hubbard, Floyd	
Huber, Donna	31
Hudson, Bonnie	31, 63, 64
Huff, Marilyn	34
Hughes, Charles	
Hughes, Donald	
Hunt, Lynn	49, 59, 60
Hunter, Lorne	
Hurlbut, Jacqueline	
Huyge, Joanne	22, 60, 62, 64

I

Inman, Virgil	
Irons, LeRoy	
Isaacs, Dona	

J

Jackson, Floyd	71
Jackson, Norman	
Jacobs, Marie	
Jacoby, Janice	
Jacobson, Bruce	
James, Dorothy	22
James, Robert	
Jameson, Lynne	
Jangard, Donald	81
Jank, Willard	
Jansen, Donell	
Jans, William	
Jarvis, Janet	
Jenser, Bob	
Jensen, MaryLou	
Joergenson, Anita	
Joergenson, Kelvin	
Johanesen, Ronald	
Johnsen, Donald	
Johnsen, Duane	
Johnson, Delores	
Johnson, Dexter	31
Johnson, Farland	
Johnson, Lee	
Johnson, Marie	31
Johnson, Marilyn	34
Johnson, Mary	
Johnson, Maureen	
Johnson, Neva	34
Johnson, Ruth	
Johnson, Shirley	
Johnson, Wilfred	
Johnstone, Miles	
Jones, Darral	23
Jones, Donald	
Jones, Donald	
Jones, George	
Jones, Mary	34, 63, 87
Jones, Stanley	23
Jongeneel, Marion	
Jorgenson, Jim	
Jovanovich, Marie	
Jude, Joan	
Junk, Willard	

K

Kamperman, Nellie	23
Kaufman, Jay	
Karwacki, Bill	82
Kautz, Elizabeth	
Kasen, Douglas	31
Keene, Carolyn	34, 65
Keith, Donald	23
Keith, June	
Kelly, Edna	
Kennedy, Roy	
Kephart, Joy	64, 65
Kerns, Robert	
Kerr, Donald	64
Kersey, Ethel	
Kettel, Ewald	
Ketterling, Reinhold	
Kidd, Beverly	31
Kidd, Larry	
Kimple, Dillon	
King, Bessie	
King, Maxine	
King, Sally	
King, Sheelagh	31
Kintner, Gordon	
Kirby, Walter	
Kirk, Dorland	
Kluksdahl, Harris	49, 61, 31
Knapp, Bill	
Knight, Roberta	
Knott, Marlene	
Know, James	31
Knowles, Carolyn	87
Knowles, Sharon	
Knox, Susan	59, 87
Knudsen, Leslie	
Knutsen, Wil	31
Knutson, Kenneth	
Koert, Murella	
Kohler, Anne	59
Kohler, Dick	62
Kohr, Tom	
Konsa, Esther	31
Kornblum, Bernice	
Kratz, Whitfield	31, 61
Krebo, Raymond	63
Krull, Richard	36, 68
Krull, Richard	36, 86
Kuhn, Pat	
Kuljis, Mary	
Kuoppala, John	
Kuska, Bryan	

L

LaBounty, Robert	
Lacy, Lorne	
LaFave, Glenn	
LaFreniere, William	
Lafrenz, Victor	23
Lagasse, Hector	23
Laird, Elmer	
Laird, Nova	
Lallas, Louie	65
Lamkin, James	23
Lamoureux, Christine	
Landahl, Jean	23
Landahl, Lillian	23
Langdon, Virginia	
Lange, Barbara	59, 23
Lange, Paul	
Lanphear, George	23
Larsen, Ronald	
Law, Ceole	
Lawrenson, DeWitt	
Leathers, Samuel	59
LeCompte, Oscar	
Lee, Arthur	85
Lee, Les	85
Lee, Vic	
Legbandt, Ursula	23
Lehmann, Beverly	
Lemley, Richard	

Leslie, Donna	
Lewarne, Charles	35, 64
Lien, Allen	
Lind, Karl	
Lindberg, Charles	84
Lindberg, Lois	
Linde, Alida	23
Linder, Kenneth	23, 59
Linsert, Marylou	
Little, Deloy	31
Livermore, Elizabeth	
Lloyd Judson	
Lochbaum, Nancy	
Lockhart, James	
Lord, Harriet	35, 59, 65
Loreen, Ernie	
Lorentzen, Joanne	23
Lott, Anne	
Loudon, Diane	
Lowry, Larry	53, 82
Lowry, Ned	
Lucas, Robert	
Lund, Corinne	59, 60, 65
Lund, Eloise	
Lunde, Alfred	59
Lunde, Patricia	59
Lunsford, Floyd	
Lunsford, Larry	37, 85
Luther, Joanne	
Lutz, Paul	
Lyle, Loren	

M

MacGregor, Florence	
MacKenzie, Kay	59
Mackey, Ruth	
MacPhail, Mary	
McCampbell, Sarah	
McClellan, Roy	
McConnell, Albert	
McConnel, Robert	
McCormick, Gerald	
McCormick, Hays	
McCormick, Terence	
McDonald, Barbara	
McDonald Roger	
McGinnes, Jean	
McGinnis, Nancy	
McGlothorn, Richard	
McHargue, Kathleen	35
McIntee, Leo	
McKinney, Arlene	59
McIvor, Lyla	
McLean, James	
McLin, Jack	
McLane, Donna	35
McMicken, Shirley	87
McPherson, George	
McPherson, Martha	
McRae, Thomas	
Magelssen, Gerald	63
Maio, Don	
Majerus, Magdalen	
Mallahah, Kathleen	
Mallonee, Margaret	35
Malnerich, James	
Malone, Marvin	59
Mandery, Bev	
Manely, Beverly	62, 87
Manos, Pano	
Mansur, Dale	60, 82
Marcoe, Clifford	70
Mariotti, John	81
Markishtum, Carlisle	81
Marr, Marjorie	
Marsh, Loren	
Martin, Chris	
Martin, Frank	
Martin, Shirley	59
Martinsen, Wesley	59
Martinson, Charlotte	35
Maston, Wayne	
Mastor, John	

Index to 1953 Klipsun and Names of Students Not Pictured

Mastor, Ted		Northrup, Charles	39	Plancich, Vivian	25, 60, 62, 64
Mathes, H. B.		Noteboom, Jim		Poirier, Paul	
Matson, Marie				Pond, Virginia	25, 59
Mattson, Emma-Jean		O		Porter, Robert	32, 58
Maxfield, Jesse	31	Obermueller, Carol	39, 71	Poulson, Lowell	
Maxim, Eugene		O'Connor, Mary Lou	31, 63	Pouler, Beverly	39
Maxwell-Muir, Pete		Odell, Allen	32, 55	Price, Harold	
Maxwell-Muir, Rodney		Odle, Eldon		Price, Pa t	25, 71
May, Bernice		Oelrich, Dolores	32	Price, West	
Meadows, Elmo		Oelrcih, George	32	Prellwitz, Dixie	
Mealy, Richard		Oelrich, Mary	32, 59, 65	Preston, Eunice	39
Medcalf, Keith		O'Hearn, Patrick		Pugh, Carol	
Medley, Eleanor		Ohrt, Mary Ann	37, 39	Putnam, Robert	
Meenk, Sally		Oldani, JoAnne	25	Putnam, Patsy	
Meier, Marjory	35	Oliver, Marlene	32		
Melland, Arthur		Olsen, Delle		Q	
Merner, Arthur		Olsen, Loretta	64, 65	Quinn, Roland	
Meyer, Arline		Olson, Donald			
Miller, Donna	59, 64	Olson, Eugene		R	
Miller, Herbert		Olson, John		Raaymakers, Pearl	
Miller, Mary		Olson, Leola	39	Raaymakers, Theodore	
Miller, Mary Ann		Olson, MaryAnn	32	Rahmgren, Ruth	25
Miller, Morris	31	Ondracek, Elaine	58, 59, 62, 65	Raines Howard	
Mills, Cecelia		Ondracek, Ray	25, 59, 60, 61	Ralph, Peggy	32
Minahan, Fred		Orbeck, Mary	65	Rameau, Laureen	39, 64
Moe, Peter	35	Orbeck, Wilma	59, 70	Raper, George	
Moen, Marilyn		Oril, Richard	32	Rassley, Thomas	
Moen, Richard	82	O'Sammon, Michael	35	Rasmussen, Margie	
Moffitt, Raymond	63	Ostrom, Geraldine	39	Raymond, Harold	
Moller, Norma		Oswalt, Bob	25	Reamer, Allen	25
Monroe, Richard		Otness, Norma	39	Reardon, Kathi	
Montgomery, Duane		Otten, Lee	25	Rector, George	
Moore, Colleen		Overdorff, Carolyn		Redmond, Julia	70
Moore, Donald	64	Owens, Garnett		Reeves, Hal	
Moore, Fred		Owens, John		Reeves, Lee	
Moore, G. A.		Owings, Lola		Rehberger, Gerald	39
Moores, Bill		Owings, William		Reilly, Colleen	
Moors, Burton				Reimer, Galen	36
Morgan, Duane		P		Reinert, Gerald	32
Morgan, John	59	Paar, Irene P.		Reinholt, Joan	63
Moritz, Earl	61	Padgett, Larry		Reink, Duane	39
Morrison, Ian		Paice, Ernest		Reinus, Vern	
Morrow, Mary		Paladin, Don		Renner, Lorraine	
Morsman, Myra		Palmer, Suzanne	64	Renshaw, Ken	
Mortimer, James		Pangallo, Richard		Reposa, Billie	26
Morton, Shirley	35	Park, Eugene		Resner, Carol	37, 39
Moulton, William		Parkhurst, Howard		Reyes, Elias	
Mountjoy, Donna		Parnell, Lowell	25	Rhinehart, Beverly	39
Muir, Claudette	63	Parrish, Jerry		Rhodes, Lee	
Mulford, Carol	65	Parry, Myrna		Rice, Beverly	39
Mullen, Neil	58	Patenall, Thomas		Rice, Keith	
Murphy, Wallace	31, 65	Patrykus, Ann	63	Richardson, Norman	
Muscutt, Mary		Patterson, Dick		Ricketts, John	39
Musgrove, William		Pearson, Gotthard		Riehl, Eugene	
Mutch, Gloria	33	Pearson, Win		Riehl, Richard	39
Myers, Mary		Pedersen, Margaret	59	Riggs, Dorothy	39
Myhre, Ralph		Pederson, Barbara		Righi, Angelo	
		Pederson, David	39	Roberts, Nancy Jo	32, 87
N		Pederson, Edwin		Robison, Melvin	
Nahney, Robert		Pelkey, Loren		Robuson, Charles	39
Natrass, Lorraine	63	Penner, Joyce	25	Rockwell, Marian	64
Nelson, Eleanor	59	Pennington, Carole		Roe, Marlene	39, 40
Nelson, Gene		Peoples, Janice	62	Roessel, Elaine	59
Nelson, Kenneth		Perry, Graham		Rogers, Jean	32
Nelson, Paul		Peters, Carl		Romer, Lois	26
Nelson, Pauline	35, 64	Peterson, Gerald		Roo, Dale	
Nelson, Susan		Peterson, Janis	25	Rose, John	
Nelson, Virginia		Peterson, Joanne		Koss, Donald	26, 65
Ness, Marydee	64, 65	Peterson, Jack		Ross, Rosemary	32
Neudeck, Patricia	39	Peterson, Modris	25	Roth, Neil	
Newman, Paul	31	Peterson, Wesley	25	Rothenbuhler, William	
Newell, Peter	35	Petrosik, Bob		Royal, Gerald	26, 60, 61
Neyman, Maxtin		Pfister, Gordon	65	Ruby, Robert	
Nielsen, Franklin		Philliber, Charlene		Rule, Rita	35
Nielsen, James	59	Phillips, Ronald			
Nielsen, R.	59	Philpott, Tom		S	
Nienaber, Arlene	39, 65	Pierce, Mary	32, 62	Sadler, Jack	40
Njaa, Theodore		Pinkerton, Guy	39	Safsten, Curtis	26
Noah, Curtis		Pinkey, Janice		Sager, Jim	
Nugent, Donna		Pippinger, Dorrene	39, 64, 65	Salisbury, Mary	
Noland, Jerry		Pirrung, Hazel	35	Sallee, Donald	
Nordtvedt, Robert		Pirrung, John	39	Samms, Bob	59
Norman, Remo	31	Fitsch, Greg		Samuelson, Kathleen	35

Index to 1953 Klipsun and Names of Students Not Pictured

Sandberg, Ralph			
Sande, Earl	70		
Sashua, Marilyn			
Sawyer, Dick	26		
Sawyer, Thomas			
Schaffer, Thelma			
Schellenberg, Ernest	59		
Scheldrup, Robert			
Schell, Melville			
Schermerhorn, John			
Schermerhorn, Ronald	65		
Schlagel, Viola	40, 65, 75		
Schuyleman, Marilyn			
Scott, June			
Scott, Ross	60		
Scott, Varryl			
Scott, William	26		
Scribner, Marilyn	40, 59		
Sealander, Carol			
Searing, Judith			
Seckel, Harris	26, 64		
Sedell, Geneva	35		
Seelye, Mildred	74		
Selander, Britt			
Selk, Ralph			
Shahan, Elizabeth			
Shannon, Wilma	32, 62		
Shaudney, Walter			
Shaw, Doris			
Sheehan, John			
Sheets, Jean	26, 59		
Shell, Mell	32		
Sherman, Alvin	64		
Shields, Olive			
Shoot, George			
Short, Robert			
Shulene, John			
Shuman, Jeanne	32, 59		
Silliman, Nancy	40		
Simon, James	35, 50		
Simpson, Ronald			
Sinclair, Jack			
Sinclair, Joanne	35		
Sinclair, Patricia	35		
Six, Allen			
Six, Gerald			
Sizelove, Fred			
Sjolund, James			
Skinner, Phillis	53, 59, 60		
Skogman, Kenneth	26		
Slaninka, John			
Sliter, Bernice			
Sloan, Frances	32, 63		
Slotemaker, Ruth	59		
Smethers, John			
Smith, Alexander			
Smith, Anita	35, 63, 64		
Smith, Carole	40		
Smith, Hubert			
Smith, Jean			
Smith, Diana	65		
Smith, Lynette	35		
Smith, Marilyn	59		
Smith, Martin	26		
Smith, Pat	35		
Smith, Raymond	40		
Smith, Ruth	35, 65		
Smith, Wayne	32, 61		
Snapper, John	26		
Snowden, Helen			
Solberg, Robert			
Solley, Eris			
Solvik, Gene			
Sommers, Frances	32		
Sorstakke, Carl			
Sovde, Lora	26, 62, 64		
Spoelstra, Annette			
Speck, Jane	40, 59		
Spencer, Ronald			
Spencer, William			
Spike, James	40		
Splane, Patrick			
Spurrel, Fred			
Squillace, Ralph			
Staggs, Gene			
Stanley, Donna	40		
Stark Richard			
Stave, John			
Stearns, Roger			
Stenman, Gordon	40		
Stephan, Edna	35		
Stephens, David			
Stephenson, Gordon			
Stevens, Carole			
Stevenson, Donna	40, 64		
Stevenson, Joyce	32		
Stevenson, Mary	40		
Stewart, A. R.			
Stewart, James	title page, 26		
Stewart, Dick	58		
Stibre, Loretta	26, 62		
Stobbert, George			
Stogsdill, Rose			
Stone, Gladys			
Stone, Robert			
Stone, Orville			
Stout, Gertrude	27, 52		
Strode, E. A.			
Stow, Sheila	35		
Sullivan, Colleen	35, 65		
Sundal, Robert	35		
Sundquist, John			
Sunitsch, Ann	40		
Sutherland, Janet			
Sutherland, Sally	40		
Svidran, Arthur			
Swalwell, Ken			
Swan, Betty			
Swan, Gerald			
Swanberg, Alan			
Swanson, Charles			
Swanson, Olaf	27		
T			
Tabor, Ross	35		
Taylor, Audrey			
Taylor, Jean	40		
Taylor, Charles	40		
Taylor, David			
Taylor, Frank			
Taylor, Phyllis			
Taylor, Ralph			
Taylor, Ray	40		
Teller, Margaret	27		
Tender, Irene			
Tesdall, Richard			
Tesera, Shirley	59		
Theiss, James			
Thomas, Harold			
Thomas, Jesse			
Thomas, Keith			
Thomas, Robert			
Thompson, Floyd			
Thompson, Harry			
Thorneycroft, David			
Thorsen, Bernice			
Thorsen, Pat			
Thorsen, Robert	27		
Thorson, Robert			
Ticknor, Charlotte	35		
Tidball, Helen	40, 65		
Tinkham, Fern	40		
Tinkham, Kenneth			
Todd, Glenda			
Todd, Robert	27		
Tooker, William			
Top, Howard	40		
Top, Jack	37		
Top, William			
Tozier, Grey	40		
Tozier, Sydney			
Traffton, Nancee	40		
Trames, Tom	40		
Trecker, Francys			
Truman, Jacqueline	40		
Tubbs, Thomas			
Tucker, Priscilla	27		
Tudor, Jeannie			
Twidale, Shirley			
Twing, Larlene	40		
Twing, N. D.	59		
Tyyska, Lorraine			
U			
Uhrig, Frank			
Uhrig, Ralph			
Umphlette, Jeane	40		
Unterwegner, James	62		
Upington, Thomas			
Urbick, Margy	27, 60		
Urch, Dolores	40		
Usitalo, Richard	27		
Uskoski, William			
V			
Vail, Jessie			
Vajovich, Robert			
Valentine, Kenneth	27, 60		
Van Anten, Paul			
Van Dame, Ronald			
Van Demark, Dick			
Vandermay, Marvin			
Vanderpol, Marvin			
Vander Friend, Marianne			
Vanderhage, Clarence			
Van Stone, N.	59		
Vanerstrom, Gary			
Van Moorhem, Osborne			
Vann, Mary Lou	40		
Van Woudenberg, Grace	35, 65		
Van Zanten, John	35		
Van Zanten, Lee			
Vaughan, William			
Vezzetti, Martin			
Vik, George			
Virkleyst, Lilly	32		
Vitaljic, Ver	40		
Vogel, Margaret	59		
Vuylsiek, Virginia	40, 65, 75		
W			
Wagness, Lee			
Wahl, Linda	32, 63		
Walberg, Joyce	27, 63		
Walden, Geraldine			
Wallace, Dale			
Wallace, Don	50, 52, 64		
Walberg, Joyce	62		
Wallace, Dorothy	70, 71		
Walters, Dorothy	40		
Warneke, Janet	65		
Ward, Bill	65		
Ward, Don	27, 61		
Ward, Eleanor	27		
Wardell, Nancy	40, 65, 70		
Wells, William	40		
Westland, Kyle	40		
Westman, Lee	40, 71		
Westover, Zoanne	40		
Whittaker, Lorena	27		
White, Bob	35		
Wiese, Fern	35		
Wiedenback, Avis	35		
Willet, John	52, 70		
Williamson, Betty	40		
Wilkenson, Virginia	35		
Winn, Marilee	40		
Witter, Wanda	40		
Wolf, Beth	59		
Wolf, Dean	65		
Wolff, Sam	27		
Woodman, Bob	28		
Wray, Donna	36		
Y			
Young, Jack	7, 28		
Young, Joan	28, 59, 65		
Young, Marilyn	36		
Z			
Zugelder, Marion	40		



