







# SPORTS SLANTS

BILL FISHER

The days are tinged with a cool bite that fires us with enthusiasm, thoughts of pumpkins and cornshocks in the farmer's brown fields and instills in us the rejuvenating feeling that "footballs" in the air."

The situation has assumed a national scope and as we survey the "colitch" field we become aware that already a few schools are fielding powerful football aggregations. By virtue of their impressive wins over Iowa and Northwestern respectively, Wisconsin and Michigan look hot in the Big Ten. In the East, Harvard, for one, has been bowling 'em over in a big way. In the South, Tulane and Florida are looking good while in the Big Six, we have Oklahomā as the only team that has chalked up any outstanding victories.

On the coast, we have our eye on Stanford and listen boys, we're telling you that Washington is plenty nice but oh my!--if they had only taken the Oregonians for a ride!

Observing local antics, we've concluded that the high school conference is going to see a fight all the way with Everett's fame and Anacortes' impotency as the only possible extremes.

Hi, Bill! Quit running, you fellows, we're just calling one particular Bill--Osborne's the name. By the way Bill, how was your date with Mrs. Bell Sperry (alias Mrs. Birch) last Saturday afternoon?

Yeah, we heard all about it! How you just couldn't wait any longer so you dashed right out on the athletic field and cornered your woman. Well, did you get the date Bill?

The story is as follows: The magician's wife (and was she nice!) came tearing around the corner by the old tennis courts in her new Buick eight. She wanted to turn around and since magicians wives are "different", she thought she'd take a fling at the race track. Bill Osborne, our athletic manager was in the vicinity and thought she wouldn't. He was on that woman like a shot and they had it out.

Bill sure did his duty but we'll bet a cooky that next time he goes chasing people off the track, he'll make sure ahead of time what they look like. Was she nice?

When Sam Carver embarks on an expedition there has to be a purpose for it. We heard he left town last Saturday with "Pop" Gunn, and "Posey" and "Brink", so we decided to check and re-check. We also heard rumors of a girl's note but we couldn't verify them.

Last Monday we saw Freeman Berg down in the main hall so we put two and two together and got five. But anyhow, the visitation must have been a success because Berg is back with us and Sam has quit losing sleep over the center position.

"Welcome back" Berg, from Debby Altose, the students and the faculty!

The setting: Waldo field. Time: 2:15. Stage set: grandstand full (?) of people and a field with some white stripes on it and some funny cross-bars at each end. The characters: Twenty-two he-men warriors, and two odd birds dressed in white shirts and bloomers, one of whom is always running around in circles tooting a whistle. "Okay," Mr referee ---Curtains! ---I say, get all of those fool stage hands on the ropes!

Eleven men bear down--a big foot collides with the pigskin and they're off! and the lid is pried off and out jumps our little jack-in-the-box "Football."--See you at the big game tomorrow!

Katherine Hollis and Mildred Frenz spent the week-end in Arlington.

Marian Wells enjoyed a pleasant week-end with her parents in Blaine.

## OPENING FOOTBALL GAME WITH P.L.C. AT WALDO FIELD

Squad Is in Excellent Condition All Set for Kickoff Saturday, 2:15

### LUTHERANS STRONG



their eyes wide open in hopes of selecting a truly representative team to wear the Blue and White tomorrow against the Pacific Lutheran gridders of Tacoma.

The condition of the squad as a whole is excellent with only a few minor injuries scattered here and there among the candidates as they tighten their belts with determination for what promises to be a battle to the finish. With the Lutherans favored to win over the locals, the Viking mentors are leaving nothing unturned in their quest for victory and feel that the Vikings, together with the spirit they have shown in practice plus school support, will give the visitors a run for their money.

### Lineup Uncertain

Who will start tomorrow's game is a problem. With approximately twenty-five men still very much in the running for varsity positions Carver's job of picking a starting lineup is a difficult one. When asked for a probable lineup, all the Viking mentor did was bury his head and say, "Your guess is as good as mine, so go ahead." With due credit to all backfield candidates it looks as though Flowers, Brinkman, Smith and Bagley will be the starting backs when the referee blows the whistle Saturday, with "Swivel-Hipped" Sinko, John Beaton, Behme and Les Williams ready to spell the starters. The backfield will possess plenty of speed and power and with Bagley's passing plus the kicking ability of Art Smith, Beaton and Williams, should stack up fairly well against the visitors.

### Comfort to Start

When Sid Comfort and Nelson Brewer, veteran linemen on the forward wall, flanked with either Finley or Berg at center, the line will have two and possibly three veterans from the last year on the forward wall. Others who will probably get their initial baptism are: Gable, Partes, Flint, Banner, Sulkosky, Hallowell, McLean, Turner and Christy. These together with Cole, Joe Hermesen, Foster, Good, Charlesworth and Hogan will give the Parkland line plenty to shoot at. The Pacific Lutheran squad by virtue of their impressive showing against the College of Puget Sound shape up as a stiff test for any team and if the Vikings can tie or hurdle the City of Destiny eleven, the Normal gridders, will be in a fair way to go places this season. The opening kickoff is set for 2:15 on the local gridiron.

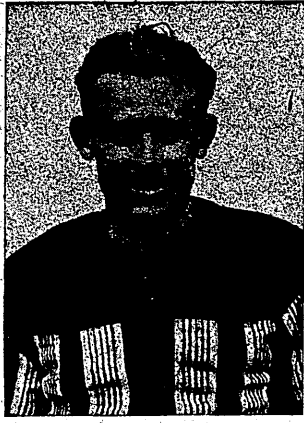
### Illness Reported

Francis Beard, Leona May Knight and Esther Rorey have been absent during the past week on account of illness, also Mrs. Marion Gimmel, due to illness in her family.

Evelyn Clark and John Beaton have returned to school after a week's illness.

The Mayflower circle of the First Congregational Women's society, gave a very informal party Saturday evening in the church for the Congregational students of this school.

## SMITH, VETERAN BACK



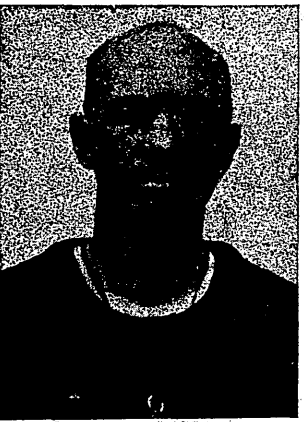
Name: Arthur Smith. Born 1908, Bandon, Ore. Age: 24; height, 5 ft. 8 in. Weight, 164 pounds. Schools attended: Arlington high school, Bellingham State Normal.

Hobby: Placing punts where someone isn't.

Smith, letterman and second baseman of "Pop" Gunn's 1932 baseball squad, is commencing his second year of football competition at the local institution. Although not playing the required time to earn a sweater in football last fall, Smith, nevertheless, was a valuable part of the Viking machine, and with an early start this season, stands a good chance of being one of the mainstays of this year's eleven.

While attending H. S. at Arlington, Smith played baseball, football and basketball and was a member of the track team. In all earning nine high school letters, a record to shoot at considering these were earned in three year's time.

## GUNN GLOOMY



Ambed into the P. E. office last night and finding Assistant Coach Gunn by himself I was determined to get "Pop's" opinion on the outcome of tomorrow's game with P. L. C.

Using a little election strategy to get warmed up I shot this question straight at "Pop": "Who's going to win tomorrow's football game?"

Without a second's hesitation Gunn replied: "I figure Pacific Lutheran College to beat us 12 to 6. They're going to score in the first quarter by a series of off-tackle plays and then to make things secure will add another six points during the third quarter by virtue of their passing attack."

When questioned closely about the Vikings' scoring chances, Gunn remarked, "I'm not sure how the Vikings will score, but I figure we are good for one touchdown during the afternoon, and don't let anyone kid you, this Pacific Lutheran bunch are plenty good, even though C. P. S. beat them, and after tomorrow's game we will be in a better position to rate the strength of the Vikings."

So there you have it, students, all in a few words. In the past Gunn has guessed 'em plenty good--but then the dope has been upset too. After the game we'll all know.

Use Viking ads as your shopping guides.

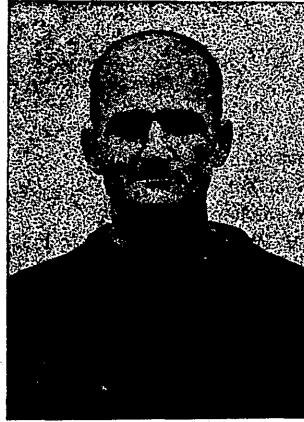
## Grid Schedule

When the smoke of tomorrow's game has cleared away, the football season will be in full swing. Two weeks hence, the Vikings tangle with the powerful St. Martin's eleven. St. Martin's boast a powerful aggregation and the outcome of these first two games will serve as a barometer, insofar as the Viking strength is concerned.

### C. P. S. Next

After the St. Martin's game on October 28, the Vikings face three weeks of tough football assignments. Carver will bundle up his charges for a game with the College of Puget Sound in their own backyard on November 4 and then will take on the Wildcats of Ellensburg in an Armistice day tilt, only to return home and prepare for the Homecoming classic against the Cheney Savages, on November 19. This game marks the finish of hostilities.

## CARVER SPEAKS



When Coach Carver was asked for his opinion on the outcome of tomorrow's football clash with the Pacific Lutheran College he commented, "I have not seen the Collegians in action this fall and therefore can't prophesy the outcome. But I will say that the squad has shown plenty of improvement during the past week in scrimmage, and I look for the Vikings to be right in there up to the final whistle."

## ENTHUSIASM SHOWN AT LARGE TURNOUT

"Women's sports turnouts are larger and more enthusiastic this fall than they have ever been," was the statement made by Miss Mildred Jewell, coach. Every afternoon finds over 50 girls out on the field practicing diligently.

Sports being offered to W. A. A. girls this quarter are hockey, with Pauline Chetwood as manager; soccer, with Elizabeth Schuehle acting as manager, and volleyball under the management of

Tap dancing is also offered during the afternoon sport hour on two days of the week. Miss Jewell and Miss Horton are coaches of these various activities.

After preliminary practicing is over, the girls will be divided up into teams for a tournament, following which class teams will be chosen and final class games played. The season will end with the quarterly sports banquet, at which class and all star letters will be awarded to the deserving members.

Your eyes work hard. Busy every moment for 15 hours or more every day--they need the best help you can give them. Consult Dr. John P. Woll, Optometrist, 205 W. Holly St.

**Special:**  
**MESH STOCKINGS**  
**55c; two Pairs \$1**

A regular \$1 number (1932 prices) in fine petit-point mesh stockings, available in six of the smartest fall tones. A splendid stocking, beautiful in texture, a striking mesh effect that will appeal to anyone who likes mesh stockings.

**LINED**  
**SUEDE JACKETS**  
**\$7.95**

Suede jackets keep up their triumphant march right into Fall . . . and here are new ones to fall into line. A new style Cossack type jacket with slash pockets, nicely lined. Shown in Jungle brown, Rhum brown, Arab green and Rust, sizes 14 to 20.

at *Wahl's*

## Schermerhorn Weds

The wedding of Miss Helene E. Wanzak to Mr. Fay Schermerhorn took place within the First Presbyterian church Sunday afternoon, Oct. 9, 1932.

Mr. Schermerhorn was a former Normalite.

Patronize Viking Advertisers.

## Breakfast Specials

7:30 to 9:30  
**DAILY**

TOAST, JAM and COFFEE 15c

Toast, Fruit and Coffee 15c

Cream Waffle and Coffee 15c

Baughman's

The Student's own beauty shop. Where prices are right: Shampoo 50c, Wet Wave 25c; Finger Wave (dried) 50c  
**Normal Beauty Shop**  
Phone 4086 Next to Baughman's

Sign Your Appointments on Bulletin Board NOW. SANDISON Photographer for the Klipsun. Woolworth Bldg., Phone 989



It's all right, officer! The lad only needs a pair of CAMPUS CORDS to complete the picture--and he's on his way to us to get 'em. If necessary, cut a class of break a date, but see these good-looking corduroy trousers. What a buy at their new, low prices.

**CAMPUS CORDS**

Gage-Dodson

**Clothing Store**

Exclusive Agents for Bellingham  
201 W. Holly

**25c** **DANCE** **25c**  
AT  
**BLAINE CITY HALL**  
EVERY  
**SATURDAY NIGHT**  
MOOSE HALL--Every Wednesday Night  
**JAY CURTIS AND THE GREATER 9**  
**25c** See our Wrist Watch on Display **25c**  
At Weisfield & Goldberg's, 128 West Holly St.

At Your Dealer's  
**SUNFREZE**  
IN POPULAR FLAVORS and Forms  
Phone 353  
A FOOD-vital as sunshine

PHONE **20** Special Rates to Normal Students PHONE **20**  
**TAXI**  
Lowest Rates in City  
Lowest Rates in City  
HAWLEY CAB Railroad and Holly

PERMANENT WAVE \$2.75  
Guaranteed Genuine Ringlettes Complete with Shampoo  
By Expert Operators Finger Wave and Trim  
APPOINTMENTS Day or Evening  
**KULSHAN BEAUTY SHOPPE**  
ONLY OIL SOLUTION USED  
**KULSHAN BEAUTY SCHOOL**  
RINGLETTE PERMANENT WAVE \$1.50 COMPLETE  
FINGER WAVE AND SHAMPOO 35c  
All Other Kinds of Work at Reduced Prices  
Cor. Cornwall and Magnolia PHONE 3533

**ZUKOR'S**  
Famous For Dresses  
132 WEST HOLLY

You'll Find the  
**UNION PRINTING CO.**

Always Ready and Eager to Give You Any Information  
Relative to Teaching Aids  
School Supplies, Textbooks, Etc.  
1421 Cornwall Ave. Just North of the Post Office