

WRA Sponsors Carnival Rec Tonight Following Game

Guest Tickets To Be Sold by Club Members
During Ellensburg Game Tonight

● Tonight, immediately after the game with Ellensburg, there will be a combination Carnival recreation hour in the Training school gymnasium sponsored by the Women's Recreation association.

According to Ruth Kosche and Alice Fjellman, the co-chairman, there will be numerous concessions of skill. There also will be fortune telling and a novelty counter.

Music for dancing will be fur-

nished by a nickleodeon. All the proceeds from this affair will be given to the Student Union fund.

Patrons and patronesses for the evening will be Mr. and Mrs. Alan Ross, Mr. and Mrs. Robert Hersey and Miss Virginia Hawke, the adviser.

Assisting the chairmen are: Margaret Richards, Loise Estergreen, Georgia Colouzis, Harriet Wefer, Iris Bowden, Mary German, Pat Bellingham, and Eleanor Anderson.

Tickets will be sold only between the halves of the second game and none will be sold at the door. All students will be admitted on their Student Body card.

Glimpse Future Assemblies

● Commander O. D. Adams, U. S. N., again will be a visitor at WWC when he speaks in assembly Tuesday, January 19. The last time Commander Adams was here, he was the main speaker at the 1942 Homecoming luncheon.

In 1915, Adams received a two-year certificate of work at WWC. He also has attended the University of Washington, A.E.F. University in Beaune, France, and Oregon State College in Corvallis, Oregon.

He has been Supervisor of Schools at Silver Lake, Washington; principal of Kelso High school, Washington; and state director of vocational education in Oregon.

At present, Commander Adams is in on active service as training officer at Puget Sound Navy yard in Bremerton.

● AWS and Norsemen will hold their student assemblies on Friday, January 22.

The Norsemen meeting primarily will be to make plans for the club dance on February 5. Committees will be appointed to work on the affair.

Since Don Neal, Norseman president, has been inducted into military service, a new president may be elected.

● Dorothy Miller, AWS vice-president, has stated that the student assembly for the women students probably will consist of a freshman talent assembly which is an annual affair. In this program the freshman plan and present the whole assembly. Pat Scott and Zosia Nowagrowski, freshman representatives to the AWS commission will be in charge.

Christian Fellowship Meet Wednesday

● Of interest was the meeting of the College Christian Fellowship, Wednesday noon. Members gave reviews of Inter-Varsity publications which are owned by the Fellowship and are available to the students of the college. They may be obtained by contacting Alice Pederson, secretary of the Fellowship.

All interested students are invited to come to the social which is being sponsored by the Fellowship and is to be held at the home of Mary Skilman, 359 So. Forest street, Friday evening, January 22, at 7:30 p. m. Variety will be the order of the evening, with games, and songs and a friendly talk by Grant Whipple to close the evening.

String Quartet To Appear

● Western Washington College of Education invites the students and the public to a concert of the Music Teachers string quartet to be given Sunday, January 17, at 3:15 p. m., in the Campus school auditorium. The quartet will consist of Arthur Thal, first violin, well known player from Bellingham; Robert Chisholm, second violin, violin instructor from Lynden; John Monroe, viola, high school instructor from Ferndale; and Don Bushell, cello, WWC faculty member. The following program will be presented. "Quartet in F Major," Opus 74, No. 2 (Haydn); "Quartet in F Major," Opus 125, No. 1 (Schubert).

The concert promises to be of special interest to both students and the public. This group has held together for three years as a string quartet.

Mr. Bushell states that the purpose of the concert is to make the public quartet conscious before the Budapest String Quartet arrives, and before gas rationing and the war cut off the possibilities of having any more concerts soon.

This is the first program to be given in the new Campus school auditorium that is complimentary to the public.

Subscription Fees Still Accepted

● This week's drive to send the paper to servicemen ended Wednesday night after a two day drive. Not coming up to the expectations of the AWS committee in charge, some other attempt will have to be made to obtain funds. Due to the large amount of students leaving school, the amount of subscriptions have been increased.

Last quarter 49 subscriptions were sent to former students who were in the service. Many letters have been received from these servicemen expressing their gratitude and appreciation.

GRUBB NEW NORSE CLUB PRESIDENT

● With Don Neal leaving this week, the Norsemen's office will be taken over by Byron Grubb. None of the plans for the Norsemen's dance are definite except the date.

"The dance will take place on Friday, February 5, but the place and the band are indefinite," was word given by Don Packard, co-chairman of the affair. More news will be available next week after committeemen Packard, McPherson, Reilly, and Brown meet.

WWC Collegian

VOL. XLII—NO. 14 Western Washington College, Bellingham, Washington Friday, January 15, 1943

Journalist Presents Illustrated Talk



● Deane Dickason, noted author-ity, gave an illustrated talk on his journeys to the Dutch East Indies, and Southwest Pacific in assembly this morning.

Mr. Dickason, a world traveler, formerly was a city editor for a large Denver paper; but abandoned this position so he could travel around the world as an author, journalist, and expert photographer.

What's Cooking?

By NEAL and SMITH

● It is our purpose to try and satisfy the need for a weekly journalistic review by publishing a column to cover those events and situations which should be of interest to students of WWC, but which have not been given due consideration and of which the students seem completely unaware.

A small proportion of our student body has shown by its presence that the 1943 edition of the Viking basketball squad officially opened its Winco season in the college gym last week. We pause at this point to remind the students that their student body tickets entitle them to free admission to all home games and that the gym is located directly adjacent to the campus. As it seems difficult for most of the students to find their way to the gym on the nights scheduled for home games, we, the editors of this column, will gladly take it upon ourselves to furnish adequate guide service. If that is not sufficient, we will paint arrows from all the organized houses and all the exits of Edens hall, on all possible pathways leading to the gym. It is our hope that the enthusiastic rooters, who to date have seen fit to do all their rooting within the confines of their respective halls will take our hint and find their way to the gym this evening to witness for the first time, a home game. Believe us, dear inmates of Edens hall, members of the Valkyrie club, and friends, it is a thrill. Why not try it just once. If you try our suggestion and are disappointed with the results, please let us know and we will give you our

(Continued on Page Four)

Local Club Hears College Registrar

● Dr. Merle S. Kuder addressed the Kiwanis club at noon last Tuesday on the subject of vocational guidance. He illustrated his talk by a discussion on the achievement tests which he gave to the students of Bellingham high school a short time ago.

Second Winko Double Header Features Viks vs. Wildcats

Preparing To Meet Powerful Wildcats in Winco Feature;
Lappys Vitamin "Boys" Experience Vigorous Work-out

● Another double-header basketball game is on tap this Friday and Saturday nights with the Vikings playing host to the Central Washington Wildcats.

The Wildcats are the only team so far this season to tangle with the powerful Washington Huskies and emerge victorious. The game was played on the Wildcats home floor a few days before the Christmas holidays. Carmody was high for the Wildcats with 11 points, and Gilbertson was high for the Huskies with 13 counters.

Clipper Carmody is the ace forward of the Wildcats, as is Nygard. Wiseman is center and Adams and Howard are the guards, filling out the starting line-up. Carmody is one of the best players back this year for Central. Wiseman, the tallest player on the team, is an excellent shot and is noted for his back-board ability.

The Viks this week have been scrimmaging for the forthcoming game. Monday Lappy put the boys through a vigorous work-out. Wittren has been bothered by a slight infection in his knee due to floor burns suffered during a turnout, but is expected to be ready to play this week-end. Chuck has been working the team on defensive and offensive plays. The team's percentage of shots made, as compared with those attempted is very favorable and Lappy is working on that point so to keep up the good rating. Lappy stressed the importance of a zone defense and is thinking of using it against the Wildcats.

The tentative starting line-up for the Viks is: Lowery, Richardson, Ludwick, Strankman, and Wittren.

The supervarsity will play a preliminary game each night at 7 o'clock, and the main game will start at 8 p. m. Immediately after Friday night's game the WRA is sponsoring a carnival rec hour in the small gym. All the proceeds

Trip To Wenatchee Made By Bushell

● "Snow covered the ground," was the comment made Tuesday by Mr. Donald Bushell upon his return from performing in Wenatchee. His first cello performance was a half hour program given for the Wenatchee high school. This was followed in the afternoon by a full program performed in the American Legion hall for the regular meeting of the Ladies Musical club. The program consisted of: Sonata (Eckels); Concerto (Bach-Paitigorsky); Variations on Original Theme (Romberg); and a group of modern French numbers. He was accompanied by Don Smith of Wenatchee.

SERVICE ROSTER NOT COMPLETED

● According to Faye Stiles, chairman of the service roster committee, plans have not yet been completed for the roster. This list will consist of the names of former students now in the armed services.

The committee assisting the chairman is made up of Irene Chetwood, Jeannette Bright, and Shirley Parsells. Plans are to be completed at their next meeting.

Staffs Make Prom Plans

● With the Board of Control's permission, plans are being made for the fourth annual Publications' Prom. This gala event will be held the week-end of Valentine's day in the gymnasium.

Under the co-chairmanship of Bernice Shellhammer, editor of the WWC Collegian and Hazel Anderson, Klipsun editor, the following committee heads have begun preparations: Judy Klann, invitations; Gloria Campbell, princess; Betty Ann Groger and Irene Radel, decorations; Georginia Voris, Harold Hardman, Joy Hatt, and Alice Fjellman, tickets; Sheila Moore, reception; Nan Randell and Art Reilly, signs; Pat Murray, music; and Pat Scott, publicity.

The first of these all-college informal was held on February 16, 1940, when the custom of extending personal invitations to the staff members of the respective newspapers and annuals of the high schools in the county was established. The weeks of campaigning and careful selection of a princess to reign over the occasion, was climaxed by the princess coronation the night of the prom.

For the past three years, this highlight, the crowning of a princess has been broadcast over the air from the gymnasium. These customs compose the now traditional Publications' Prom.

Broadcast Planned

● Ramon T. Georges radio broadcasting class has begun plans for their first broadcast, which will go out over the local station soon.

Each members of the class will have a turn to be director and manager of the program, which will include news about the college and training school. Occasionally plays will be presented over the air, some of which will be educational, and some straight drama.

Lloyd St. Clair, first chairman, has planned the broadcast, and has distributed the news beats among the class.

★Dateline . . .

Friday, January 15—
Basketball with CWC in PE building at 8 p. m.
WRA Carnival Rec Hour in training school gym immediately following the game.
Saturday, January 16—
Basketball with CWC in PE building at 8 p. m.
Monday, January 18—
C. C. F. Bible study at 4 p. m., room 228.
Wednesday, January 20—
C. C. F. Bible study at 4 p. m., room 228.

Committee Members Named by AWS

AWS standing committee chairman have named their committee members for winter quarter.

The new committee members are: standards, Melissa Persons and Glennis Sundberg; room service, Nada Jones and Jean Wittler; leadership, Lorraine McConnell and Alice Marie Anderson; social, Betty Moles and Jeannette Bright; fellowship, Sheila Moore, Rhoda Blair, and Mabel Odegaard; and publicity, Pat Murray and Irene Radel.

Miller Replacing Douglas

● Since Elizabeth Douglas, AWS president, will be out of school this quarter, Dorothy Miller, vice-president of the women students, will assume the duties of the president.

Hilarious Happenings Haunt Hilltop Houses

Watts Celebrates Birthday at Dorm

Saturday night, January 9, a delightful surprise party was given in honor of Rosemary Watts. Attending this gala affair were the Misses Betty Ann Groger, Hazel Anderson, Joy Hatt, Mary Jean Moore, Ruth Lauber, Ruth Olds, Jeannette Bright, Kay Alvord, Lois Jo Smith, Ellen Van Wieringen, Ruth Krause, Norma Calbom, Dorothy Bell, and Cheryl Smith. A special birthday card was presented to Miss Watts with etchings by Betty Ann Groger and poem by Ellen Van Wieringen. (Well, could be verse. I said it, and I'm glad.) Ice cream (slightly melted,) and cake was served; after which each guest was given earrings (rumor-

ed from Tiffany and Co.) The honored guest and the rest of the gang then proceeded to the WWC-PLC basketball game.

Mary Jean Brandstrom is leaving WWC to transfer to Washington State college where she will take up interior decoration.

Terrace House Goes in for Stationery

Although Christmas was nearly a month ago, each one of us is still wondering how each one of us happened to give each one of us the same kind of stationery. It seems that each one of us didn't know what each one of us was giving each one of us, so each one of us was very surprised when each one of us opened each one of us's presents and saw that each one of

us had given each one of us.—Oh, heck!

Sis Boom Sezzzer Dezzzer— Hospice Inn Yells for Bezer

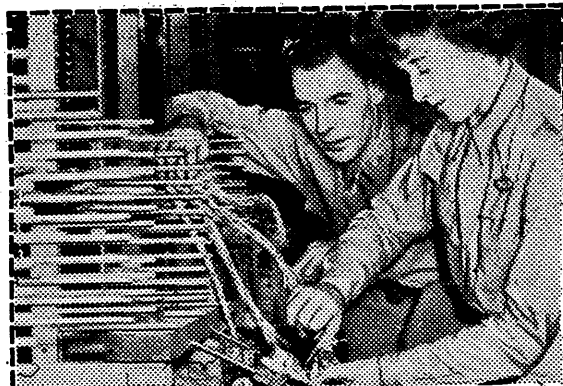
Plans to develop an enthusiastic and peppy cheering section at all home basketball games are being developed by Hospice members. Every member of Hospice who does not go home will be at tonight and tomorrow night's game, anxious to yell like — Hospice extends this challenge to all organized houses. We will be sitting in a group at tonight's game and we are willing to wager that we give more and better yells than any other group, including Edens hall. (If any of the members of said establishment show up at the game.) (This is Hospice's comment not ye olde editor's.)

Edwards Enrollment Decreases

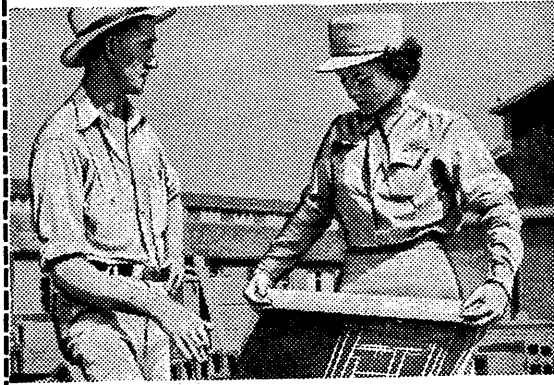
After a prolonged absence of news for "ye paper" Edwards hall again is in the limelight. The enrollment of Edwards hall has somewhat decreased this quarter. We have a total of seven scholars in our house. With the lack of men, however, we are still carrying on. Our bowling team took two games from the independents to go back into a tie for first place with the WWC Collegian team (plug). On Tuesday night they dropped a close 25 to 27 basketball game to the Hospice Inn team. Guests over the week-end were George McGuire and Bill Windsheimer, former residents of Edwards and former WWC students. "Red" McGuire has just returned from the Solomons.

U. S. Army Announcement

To College Women in their Senior Year



WAAC learning line testing



WAAC Draftsman



WAAC Laboratory Technician



WAAC PAY SCALE

Officers	Equiv. Rank	Base Monthly Pay
Director	Colonel	\$333.33
Asst. Director	Lt. Colonel	291.67
Field Director	Major	250.00
1st Officer	Captain	200.00
2nd Officer	1st Lieutenant	166.67
3rd Officer	2nd Lieutenant	150.00
Enrolled Members		
Chief Leader	Master Sergeant	\$138.00
1st Leader	First Sergeant	138.00
Tech. Leader	Tech. Sergeant	114.00
Staff Leader	Staff Sergeant	96.00
Technician, 3rd Grade	Technician, 3rd Grade	96.00
Leader	Sergeant	78.00
Technician, 4th Grade	Technician, 4th Grade	78.00
Jr. Leader	Corporal	66.00
Technician, 5th Grade	Technician, 5th Grade	66.00
Auxiliary, 1st Class	Private, 1st Class	54.00
Auxiliary	Private	50.00

● To the above are added certain allowances for quarters and subsistence where authorized.

YOUR Army has scores of jobs in the WAAC for alert college women . . . jobs vital to the war . . . jobs that will train you for interesting new careers in the post-war world. And here is good news indeed — you may enroll *now* in the fast-growing WAAC and be placed on inactive duty until the school year ends. Then you will be subject to call for duty with this splendid women's corps and be launched upon an adventure such as no previous generation has known.

New horizons . . . new places and people . . . interesting, practical experience with good pay . . . and, above all, a real opportunity to help your country by doing essential military work for the U. S. Army that frees a soldier for combat duty. These are among many reasons why thousands of American women are responding to the Army's need.

You will receive valuable training which may fit you for many of the new careers which are opening to women, and full Army pay while doing so. And by joining now you will have excellent chances for quick advancement for, as the WAAC expands, many more officers are needed. Every member—regardless of race, color or creed—has equal opportunity and is encouraged to compete for selection to Officer Candidate School. If qualified, you may obtain a commission in 12 weeks after beginning basic training.

Go to your WAAC Faculty Adviser for further information on the list of openings, pay, and promotions. Or inquire at any U. S. Army Recruiting and Induction Station.

U. S. ARMY KEEP 'EM FLYING
RECRUITING AND INDUCTION SERVICE

WOMEN'S ARMY AUXILIARY CORPS

Bench Splinters . .

collected by j. dorcy

It Might Come to This

With transportation and the money problems becoming so acute in the small colleges, interscholastic athletics may be played like this: Billings High School, Billings, Montana, will play a three game series with Webster High School, Webster, Massachusetts, by mail. A full squad of ten men will toss free throws in their own gym. The scores compiled by the five highest scorers will be mailed to the opponents and the game will be decided on the basis of these scores. It is doubtful if this method will arouse much enthusiasm among the players and from here it looks as though the gate receipts would be rather skimpy. Maybe we're too pessimistic.

Lappy's Thanks

Lappy wants to use this column as a means of expressing his appreciation for the way some of the faculty members came through to help support athletics, especially as this is a time when physical fitness is needed more than ever.

Your Suggestion?

A week ago Wednesday the Harlem Globe Trotters played to a full house against mediocre opponents at the high school. The following Friday and Saturday the Vikings entertained PLC in two fast games and even the students, who get in free, were conspicuous by their absence. What do we have to do? Give away dishes or have a Bingo game between halves!

The Huskies certainly swamped the Wildcats in their return engagement at the UW pavilion . . . Abe Saperstein owner and manager of the Harlem Globe Trotters, was a member of the Celtics . . . (Ed. note: The Celtics were one of the first and most famous of the pro basketball teams) . . . Shades of St. Patrick!! A Saperstein on a Celtic team . . . Pete Gudyka has graduated as a bombardier from the Midland Bombardier school, Midland, Tex. . . . Forty-two fouls were called in a recent game between the Pasco Naval Flyers and Ellensburg . . . I do like to see the boys show a little enthusiasm for the game . . . Captain Ernie Ludwick is leading the Viks in the TP column with 35 points . . . Trailing him are Wittren, 34; Lowery, 27; Strankman, the surprise package of the PLC series, 18; and Nicky Richardson, 14 . . . One of the best second half rallies seen so far this season was put on by Whitman against the Washington Huskies . . . Behind 14 to 33 after six minutes of the second half, they brought the score up to 35 to 39 and 37 to 41, finally fading in the last few minutes to lose 38 to 46 . . . Kenny "Mouse" McAulay, one of Sam Carver's track mainstays for the past few seasons, is now teaching at Everson . . . The Seattle Rainiers may open the 1943 season at home . . . This will be the first Coast League opener held in Seattle since Seattle joined the league in 1919 . . . The intramural basketball race got off to a good start Wednesday at 5 o'clock with Hospice edging out Edwards . . . All indications point to a tight bowling race with four teams fighting it out for first place and the other two in striking distance . . .

Unknowns Are Now Known

STANDINGS

Team	W.	L.	Pct.
Hospice	1	0	1.000
Unknowns	1	0	1.000
Daniels	0	0	.000
Edwards	0	1	.000
Renegades	0	1	.000

Sportsmanship is to hold the spotlight in the second half of intramural basketball play with five teams: Daniels, Edwards, Hospice Unknowns, and Renegades tangling into each other with a new gusto. The winner of this half will qualify to meet last half's champs, Daniels hall.

Hospice Proves a Threat

Sparked by former Naval Cadet Art Stenson, with eight counters, Hospice proved themselves a real threat in second half competition. A real thriller brought up the curtain as Hospice edged out Edwards in the dying minutes of the ball game by a score of 27 to 25. Ed Hickenbottom fared well for the losers with 10 points.

The lineups:

Hospice (27) Edwards (25)
 Morsman, 6 F. Madden, 2
 Bailey, 1 F. Hickenbottom, 10
 Brown, 1 C. Hatch, 2
 Stenson, 8 G. Diede, 3
 Wilder, 4 G. Stephanson, 8
 Subs, Hospice: Loop (2), Wright (6) Smith. v Edwards: Richards, Makus.

Unknowns Upset Renegades

Following eight consecutive losses in first half play, Wade Haggard's revamped club came through with a startling upset as they snowed under the favored Renegades. Out in front with a 10 to 3 lead at half time, the boys coasted in with a comparatively easy victory. Cooper dished in nine points for the victors, while Alderson led the losers with six. The final score: 26 to 16.

The line-ups:

Unknowns (26) Renegades (16)
 Shay, 6 F. J. Dorcy
 Ellenbaas, 6 F. Hartman, 2
 Cooper, 9 C. Alderson, 6
 Haggard, 1 G. Grubb, 2
 Frank, 3 G. Anderson, 2
 Subs, Unknowns: Bruland (1), A. Dorcy. Renegades: Felton (4).
 Daniels hall will meet Edwards hall tonight at 4 p. m.

Norsemen Beat Lutes Twice; Gain Hold on First Place

Wittren, Strankman, Ludwick Score High; Great Margins Gained Early in Each Game; Supervarsity Wins Both Preliminaries

Sparked by Rich Wittren and Punchy Strankman, the WWC Vikings ran away from the PLC Lutherans, in the first two games of the conference season last Friday and Saturday nights. In both games the Viks ran up great margins early in the first half, and gained leads which the hapless Lutherans could never overcome, although they outscored the Vikings in the second half of the opener by one point.

Strankman Surprises

The scores of the games tell the story very well. The tally of points in the first game was 50 to 37, and the last one was won by a 46 to 30 count. Lappy was able to use a total of fourteen players in each game, so plenty of the boys saw action, and gained experience that will help them a great deal against Ellensburg tonight. Wittren led the scoring Friday with 15 markers and Ludwick tallied 13 on Saturday night. Strankman, who was the surprise of the series, earned a starting berth for the second game on the virtue of his brilliant performance on Friday evening when he made 10 points. He also did well the second battle by making eight points. Ludwick had the high series total of 21 markers, while Wittren had 19 and tied with Paul Polillo of the Lutherans.

Supervarsity Wins

The Supervarsity won both preliminaries against service teams. Ralph Major led with 11 on Friday night, as they edged out the Goodman-coached Coast Guard, 42 to 41. Jack Duranceau and Bobby Ludwick combined with 12 points each on Saturday night to swamp the Filter Center by a 66 to 23 count.

The line-ups. Friday Game:

Vikings (50) Lutherans (37)
 Wittren, 15 F. Hoskins
 Munizza, 1 F. Anderson, 5
 Lowery, 4 C. Polillo, 11
 Ludwick, 8 G. Kapus, 4
 Jacobs, 3 G. Kyo, 8
 Substitutes, Vikings: Bezer, Gregg, Muscutt (2), Richardson (7), Van Sinderen, Wark, LeBaron, Strankman (10) Faller. Lutherans: Ellefson, Lider (2), Erikson (8), Bratlie, Hoff (1).

Saturdays Game:

Vikings (46) Lutherans (30)
 Wittren, 4 F. Lider, 6
 Richardson, 5 F. Anderson, 4
 Lowery, 6 C. Polillo, 6
 Ludwick, 13 G. Kapus
 Strankman, 8 G. Kyo, 1
 (Officials for both games): Bill Fisher and Bryan Lewis.

Today's Personality Two-Year Player

This is the second year in school for this week's personality and his second year of basketball for the Vikings. He missed getting a letter last year by only a few minutes but he is almost a sure cinch to earn his letter this winter. He is undoubtedly one of the hardest working men on the squad when he is on the floor, although he doesn't get a great many points.

In high school, he was second high scorer in his senior year and also an all-conference berth winner the same year. He won his letter in baseball as an outfielder as well as two years in basketball.

He is another one of the Army Air corps reservists, and like the rest of the reserves is waiting to be called in soon.

By the way, any of the non-tee totalers that ever visit the Grays Harbor district are invited to visit our personality's "rich uncle," who has quite a reputation around some of the organized houses on the hill.

WWC Hold Lead In Winco Loop

WINCO STANDINGS

Team	W.	L.	Pct.
WWC	2	0	1.000
EWC	2	0	1.000
CWC	0	0	.000
PLC	0	2	.000
SMC	0	2	.000

Games this week, Friday and Saturday:

Western Washington vs. Central Washington, at Bellingham.

Eastern Washington vs. Pacific Lutheran, at Tacoma.

The Cheney Savages, pre-season favorites, kept rolling along as they scored twin victories over the St. Martins Rangers. This put the Eastern boys in a two way tie with the Vikings. At the same time PLC and SMC are firmly imbedded in last place while Central Washington has yet to play a ball game in conference competition. The scores of the St. Martins, Eastern Washington series were 50 to 41 and 42 to 26 respectively.

Loop Gets Record Breaking Score; Hospice Bowls High

TEAM STANDINGS

Team	W.	L.	Pct.
Collegian	17	10	.630
PE Dept.	17	10	.630
Edwards	14	13	.519
Hospice	14	13	.519
Independents	9	15	.375
Faculty	7	17	.292

Hal Loop broke one record and paced his Hospice team mates as they broke another yesterday at the 20th Century alleys. His high single of 201 broke the old record of 198, also held by himself, and the team high single of 821 topped the Collegian's old record of 813.

Hospice	Faculty
H. Loop	363 Johnston
Morsman	341 Clark
Prince	328 Ross
Dennis	207 Knapman
Brown	270 Erickson
	Handicap

Edwards	Collegians
Total	1509 Total
Hickenbottom	279 A. Dorcy
Hatch	207 Grubb
Diede	219 Bruland
Kerchen	296 J. Dorcy
Low	212 Reilly
	Handicap

Independents	PE Dept.
Total	1215 Total
Follis	254 Bushell
Bolster	281 Stenson
Verrill	268 Carver
Cooper	271 Haggard
McPherson	178 Barnhill
	Handicap
	Total



PEPSI-COLA is made only by

Pepsi-Cola Bottling Co of Bellingham

M+D SANITARY NAPKINS
 PACKAGE OF 12 20c
 2 for 39c
 NONE BETTER AT ANY PRICE

M+D TISSUE
 Highest Quality
 3 ROLLS 25c

MANUFACTURED BY PACIFIC COAST PAPER MILLS Bellingham, Washington

WILSON
 ALL-PURPOSE SPORTING EQUIPMENT
Morse Hardware Co.
 Established 1884

Bornstein - Houser Sea Foods
 Largest Assortment of Sea Foods in the Northwest
 CENTER OF HOME MARKET PHONE 882

WWC's GROCERY CENTER
THE FAIR MARKET
 "You Can Always Do Better at The FAIR"
 104 Grand Ave. Phone 954

WE CALL FOR AND DELIVER
Cascade
 LAUNDRY and CLEANERS
 GEO. KOPPERDAHL, Manager
 PHONE 66 67

FOR THAT AFTER THE SHOW FOUNTAIN SPECIALTY Try **HARDWICK'S** Where Friends Meet and Eat

Need Refreshments?
 EAT TASTY SUNDAES DELICIOUS MILKSHAKES At **HILLVIEW** 1824 Cornwall Ave.

WV Collegian

ESTABLISHED 1899
Published Every Friday, Except During the month of September, by the Associated Students, Western Washington College of Education, Bellingham, Washington. Entered at the Postoffice at Bellingham, Washington, as Second Class Matter by Virtue of the Act of March 3, 1879. Printed by Miller & Sutherland Printing Company, Bellingham, Washington. Subscription Rate, by Mail, \$1.00 per year, in Advance. Advertising Rates on Application

MEMBER
Washington Intercollegiate Press Association

1942 1943

Member

Associated Collegiate Press

Vol. XLII No. 14
Friday, January 15, 1943

BERNICE SHELLHAMER.....Editor
Georgina Voris.....Copy Editor
Gloria Campbell.....Woman's Editor
John Dorcy.....Sports Editor
Harold Hardman.....Associate Sports Editor
Irene Radel.....Feature Editor
Art Relly.....Associate Editor
STAFF: Helen Cody, Pat Scott, Pat Murray, Marilyn Turner, Mary Alice Biggs, and Eleanor Anderson.

Alice Fjellman.....Business Manager
Jean Elaine Mulvaney.....Adv. Mgr.
Ruth Burnet.....Publications Adviser

Editorials . . .

Still Burning--

I would like to call attention to the excellent advice offered by our new columnists, Neal and Smith. They hit the nail on the head about attendance at Basketball games. It sure seems queer to me that students who gripe most about student body fees are the ones who never show up at the games. Where do you think most of the money goes that you pay in for fees?

What's Cookin'?

(Continued from Page One)

reaction to your reaction.

Our cheers for this week will have to be shared by the one showing the most enthusiasm at the opening series and by the pep band under the direction of Ed Prince. One of the oldest members of our faculty, Mr. L. A. Kibbe, whose excellent support of our team is widely known, has not missed more than one or two home games in the past decade. Mr. Kibbe's consistent attendance should be a model for all students, and to this further display of loyalty, we take off our hats.

To the members of the pep band, our sincere congratulations for helping the opening series get off to a good start by supplying enough peppy music to break the monotonous silence created by the cheering section. May you function as well at all future games.

To those of you who have had sufficient intestinal fortitude to stay with us this far, and to those whom the shoe does not fit, we sincerely hope you will be with us again next week. For now, see you at the game tonight.

Reporter Has Some Pun--!

• This little ditty is entitled, "Why feature writers go nuts," or "Shoot the pun to me, hon."

I know now (from the song of the same name) why all newspaper people are either jitterbugs, shutterbugs, flutterbugs, cutterrugs, etc., etc.

Feature writers just aren't the type to copy each other, 'cause they act like a bunch of slugs.

I knew a guy once who sure fed his girl a deadline. He thought she'd fall for it and chase him, but she didn't, so he finally dummy-ed up and cut it out. Galley, I can't feature it--! If he had a head on him he'd have gone to the bank and they would have lead him filler pocket with money.

"Why don't rewrite to each other?" he said, as she was leaving.

"Well, pull in your ears and put on your caps and I'll think it over," she replied, as he followed her out the door. The last thing I could hear was a voice saying, Page-ing Doctor Kildare.

Now, see what I mean when I say feature writers are a bit whackey?

Girls Help Yngve Send Collegians

• A permanent committee has been appointed to work with Doris Yngve on the mailing of WV Collegians to former students.

The new committee consists of: Jean Elaine Mulvaney, Lorraine McConnell, Olive Strom, Irene Van Dyken, and Merriette Robinson.

Reilly Invents New Gas Substitute; Antique Models Hold Spotlight

• It was originally introduced to the modern world as a '31 Chevrolet. From the latest reports the Chevrolet Company has denounced all claims to any Chev before 1932.

You've noticed it or at least heard it. Every morning promptly at 7:30 the proud (?) owner rushes forth from his place of residence and leaps blindly into his car (?) only to find he has parked it in front and not in the alley where the local constabulary have forced him to, because of complaints from all the neighbors.

After a brief half hour warm-up the gears are shifted (reverse and high) and with a smooth meshing sound the car begins to glide softly and quietly down the street.

Having a 10 o'clock class this quarter the owner does not have to arise at 5 o'clock as was his schedule last quarter but sleeps peacefully till 6 o'clock, then arises and is off.

Oh, yes! We left our little hero putting down the streets toward

Campi

When I grow too old to dream—
Maybe I'll sleep better.

The basketball game of the year should be between Sing Sing and West Point. It would prove whether the pen is mightier than the sword.

Los Angeles Collegian.

esquire is a magazine that shows what men should wear and what women don't.
Fresno State College Collegian

Just because you're a WAVE, sister, You needn't go out with the tide.

Geometrical design for romance:
Given: I love you.
To Prove: That you love me.
Proof:
1. I love you.
2. Therefore, I am a lover.
3. All the world loves a lover.
4. You are all the world to me.
5. Hence, you love me.
Courtesy of Carmen Pepper.

Friday and Saturday I hope to see Some Wildcats possessed with fear (or sompin)
And all those brawny six foot guys Advancing boldly from the rear.

I'm just a card that ought to be dealt with.
So, before I make an ace of myself I'll shuffle along.

Alkisiah Girls Initiate

• A candle light initiation service was held Monday night, January 11, at 7:30, for 13 initiates of Alkisiah. Purple and gold ribbons, symbols of acceptance, were given to the new members. Signifying their pledge of loyalty to the club, the following girls signed the membership book: Phyllis Artley, Alice Marie Anderson, Jeannette Bright, Mary Louise Burke, Carol Hanify, Nada Jones, Minerva Kern, Ruthe Olds, Marjorie Moll, Margaret Moyer, Zosia Nowogrowski, Mildred Spromberg, and Glennis Sundberg.

Alkisiah meetings will be held on the second and fourth Mondays of each month. Several committees have been appointed for the winter quarter by the president, Cheryl Smith: program, Carol Hanify, Alice Marie Anderson, Mildred Spromberg, Glennis Sundberg; social, Shirley Heaton, Zosia Nowogroski, Jeannette Bright, Ruthe Olds; Red Cross, Marjorie Moll, Phyllis Artley; Student union, Margaret Richards, Lois Jo Smith, Betty Rittenhouse; sunshine, Mary Louise Burke, Merriette Robinson; Alkisiah room, Minerva Kern, Nada Jones, Jean Wittler; tradition, Elaine Shintaffer, Shirley Olson; scrapbook, Harriet Wefer.

Basketball Sparks First Rec Hour

• Winning the first conference game of the basketball season added new spirit to the first rec hour of the winter quarter last Friday night.

The decorations depicted team personalities in novel posters, carrying out the basketball theme.

The use of the nickelodean proved very successful and Harry James, Kay Kyser, and Glenn Miller records were readily accepted as dance music.

AWS Make Robes; Wool Yarn Needed

• Ruth Kosche, chairman, announced that a drive for old woolen materials will be held. Plans are now underway to begin making convalescent robes next week. These robes are small woolen coverlets to throw over the knees of those convalescing.

Others working on the committee are: Eldeen Carr, Iris Bowden, Mildred Stromberg, and June Benjamin.

The project is being done for the Red Cross and is under the direction of the AWS.

Fog Accounts For Mistaken Identity; Many Faces Red

• Maybe you didn't know it, but we had a little fog last week. There were some pretty red faces around the campus for a while—mistaken identity—you know.

They say that during the morning, Bob Ludwick, on his way to the lib, dashed to catch up to the figure ahead of him and made some intimate remark to her, only to discover at close range that it wasn't Dawn, but instead, Norm Lowery who so graciously answered him.

It's been circulating also, that Morrie Wright was walking along the campus, caught up to the person ahead of him and slapped him on the back saying, "You play a nifty game, Rich." The blow practically knocked Mary German over.

Someone confidentially told one on Eddie Hickenbottom and Don Neal... They were walking along raving about how they'd put one over on a certain prof when they were interrupted by a crisp "Good morning, gentleman," from the passing shadow of said prof.

Oh, the density of it all!

Will the person who borrowed the picture of General MacArthur from the service center, please return it?

War Courses Now Offered

• Adapting the courses offered to the training requirements in relation to the war, the college is offering evening courses to the coast guard auxiliary and any interested students.

The following war courses are offered now in the evening: Occupational Therapy—Miss Hazel Plympton, World Reorganization—Miss Nora B. Cummins, Photography—Herbert C. Ruckmick, Blueprint Reading—Charles M. Rice, and Technical Radio—Ramon T. George.

According to Merle S. Kuder, registrar, the response has been gratifying.

EVERGREEN THEATRES

NOW PLAYING
(This show moves to American Sunday)

"7 Days' Leave"
Lucille Ball-Vic Mature
Freddy Martin-Les Brown
ORCHESTRAS
and

"Street of Chance"

Burgess Meredith
COMING SUNDAY
"I MARRIED A WITCH"
Veronica Lake

—AND—
"THE DEVIL WITH HITLER"

Allan Mobraey
MT. BAKER

"WHITE CARGO"

Heddy Lamarr
—AND—
"SEVEN SWEETHEARTS"
Kathryn Grayson
AMERICAN

"BEYOND THE BLUE HORIZON"

Dorothy Lamour
—AND—
"WOMAN OF THE YEAR"
Kathryn Hepburn-Spencer Tracy
AVALON

Rations Affect QUANTITY
But QUALITY
Is the Same
AT THE

HIGHLAND CREAMERY

615 HIGH STREET
Postoffice Substation—Ph. 182

BARBER SHOP
NATIONAL
BEAUTY SHOP

1306 Cornwall Av. Phone 1165.

BUSSES BELLINGHAM TO SEATTLE

6:30 a. m. and hourly on half-hour until 6:30 p. m., then 8:30 p. m. Additional trips Sundays and holidays at 7:30 and 9:30 p. m.

Two Trips Daily to Vancouver
Frequent Schedules to All Points East and South

NORTH COAST LINES

Magnolia and State Ph. 5004

KEEP FIT

HIGH POTENCY VITAMINS

At your friendly

STAR Drug Co.

Corner State and Holly
Phone 224

FOUNTAIN LUNCH—SANDWICHES—ICE CREAM

College Inn

High and Normal Drive

Naval Reservists

You Can Obtain the BLUEJACKET'S MANUAL At The

STUDENT'S CO-OP